



MODEL SG 400

ADA Swing Gate



8641 S. Warhawk Rd. Conifer, CO 80433
Patrick.McAllister@TURNSTILES.us
(303) 670-1099 (303) 679-8949 fax



MODEL SG 400

Swing Gate

GENERAL DESCRIPTION

The SG 400 is Hayward's heavy-duty access control swing gate. It is rugged yet stylish and fully ADA ^(Note 1) compliant. The SG 400 is manufactured at our own Connecticut plant and may be ordered with an electromagnetic lock to work in conjunction with a card reader or remote release.



MAIN FEATURES AND ADVANTAGES

- **Price** – quality, durability and standard of finish at an unbeatable price.
- **Style** – the SG 400 has sleek clean lines to complement most architectural surroundings.
- **Quality** – every aspect of manufacture, welding, assembly, and finish is strictly controlled for quality.
- **Smooth operation** and accurate closing comes from quality design and precision engineered self-closing hinges.
- **Interface** - electronic lock or standard self-closing hinge mechanisms are available.
- **Integration** – the design facilitates integration with existing or new access systems.

Applications

The SG 400 is an attractive ADA compliant swing gate designed for integration into low barrier lines. The SG 400 was created to complement our series LC and MR turnstiles. The SG-400 provides security admission control to office buildings, convention centers, sports facilities, stadiums, clubs and amusement parks and where handicap access is mandatory.

Note 1 – see following extract as published in:

ADA Accessibility Guidelines for Buildings and Facilities (ADAAG)

4.13 Doors.

4.13.2 Revolving Doors and Turnstile.

Revolving doors and turnstiles shall not be the only means of passage at an accessible entrance or along an accessible route. An accessible gate or door shall be provided adjacent to the turnstile or revolving door and shall be so designed as to facilitate the use pattern.

4.13.5 Clear Width.

Doorways shall have a minimum clear opening of 32 inches (815 mm) with the door open 90 degrees, measured between the face of the door and the opposite stop.



8641 S. Warhawk Rd. Conifer, CO 80433

Patrick.McAllister@TURNSTILES.us

(303) 670-1099 (303) 679-8949 fax



FEATURES

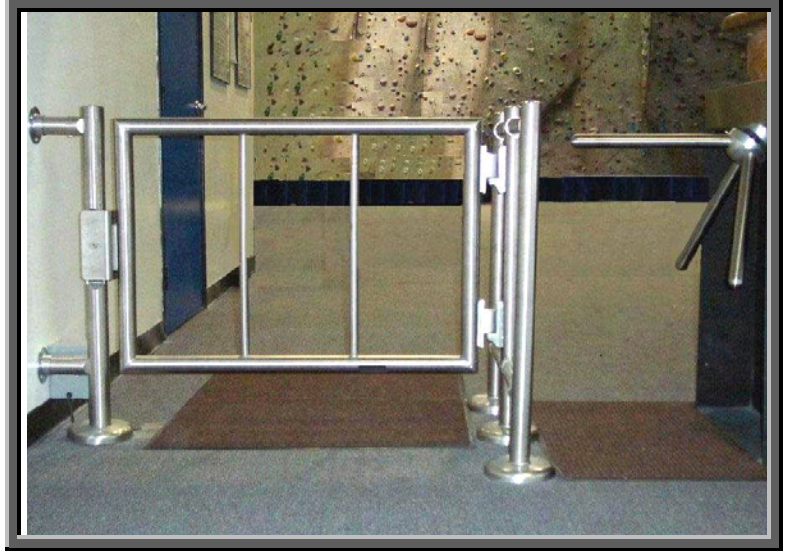
Construction

Gate and frame details:

The SG 400 is constructed from 2 inch OD satin finish 304 stainless steel tubing. The hinge post and stop post are both welded to a ¼ thick, 6 inch diameter flange plate. Each flange plate is covered with a decorative brushed stainless steel flange cover. The SG 400 comes standard with two welded 1 inch diameter pickets and hangs on two heavy-duty self-closing hinges. The standard clear opening is 40 inches (1.016 meters).

Hinges:

The hinges are heavy-duty, self-closing with replaceable bearing surfaces of Nylon.



SG-400 ADA Gate shown with LC-100 Turnstile and Rail

OPTIONS

1) Standard Options:

The SG 400 Swing-Gate comes standard with the following options:

- self-closing hinges
- satin stainless steel finish
- two pickets
- stop plate
- stainless steel flange covers for both post flanges.

2) Hinge options:

The SG 400 may be ordered as a manually closing gate.

3) Electric option:

The SG 400 is available with a UL approved electromagnetic lock, powered by 12/24VDC. This allows for the use of card readers or other types of ID inspection devices.

4) Materials and Finish:

The SG 400 may be ordered in other materials and finishes to match your railing design and architectural finishes.

5) Custom Sizes:

The SG 400 may be supplied in custom widths and height, to be compatible with architectural finishes.



8641 S. Warhawk Rd. Conifer, CO 80433
Patrick.McAllister@TURNSTILES.us
(303) 670-1099 (303) 679-8949 fax



INSTALLATION PLAN

The SG 400 hinge post and stop post are bolted to the floor using 4 x ½ inch diameter fasteners.

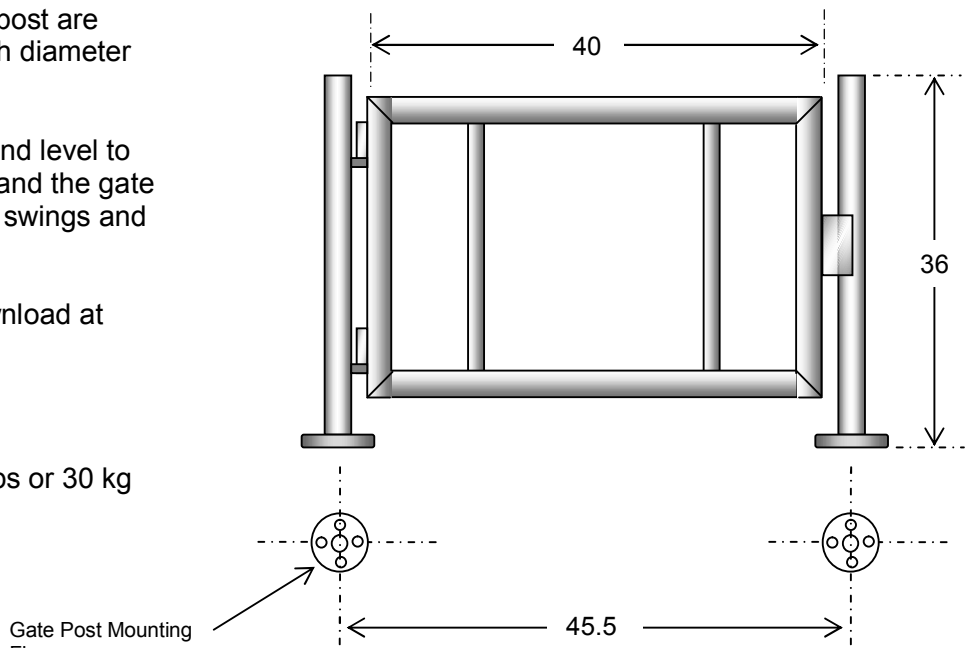
The floor should be flat, smooth and level to ensure the gateposts are upright and the gate is horizontal to the floor, so that it swings and closes smoothly.

For more details see the free download at www.TURNSTILES.us

WEIGHT FOR FLOOR LOADING:

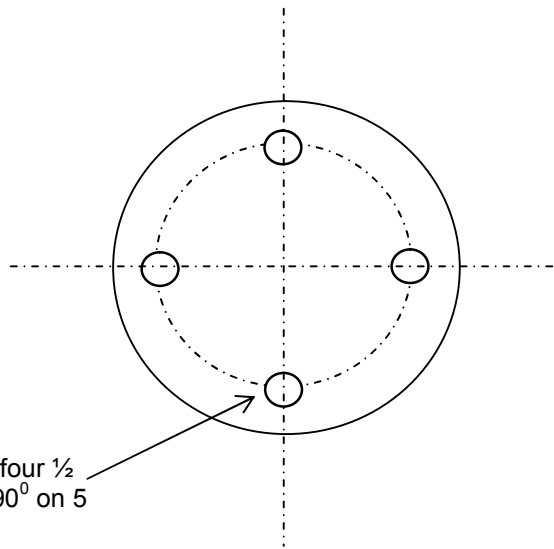
Basic SG 400 approximately 65 lbs or 30 kg

All dimensions in inches



SG 400 Swing Gate Mounting Plan

INSTALLATION POINT



Flange Detail:

6 inch diameter flange with four ½ inch clear holes spaced at 90° on 5 inch diameter.



8641 S. Warhawk Rd. Conifer, CO 80433
Patrick.McAllister@TURNSTILES.us
(303) 670-1099 (303) 679-8949 fax