

DIGITAL COUNTER

MODEL E402400

FEATURES

- 8 Digit 0.275" High LCD Display
- Battery Life: Ten Years
- Custom CMOS Technology

⚠ WARNING!
 This product contains a lithium battery and must not be cut open, disposed of in a fire or exposed to temperatures outside the range of -4°F to 140°F (-20°C to 60°C)



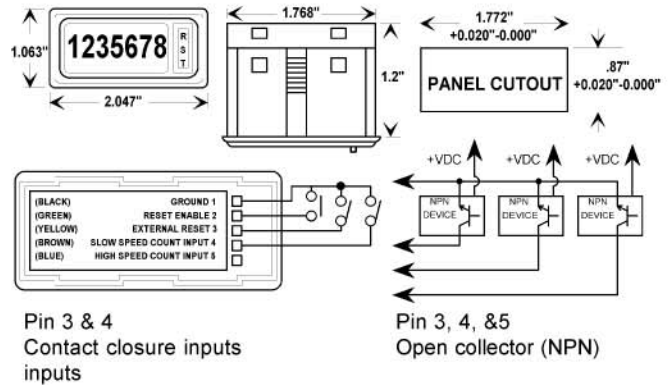
SPECIFICATIONS

ELECTRICAL

- Power Internal Lithium Battery, 10 Yr. life
- Count Input Contact Closure or Open Collector
- Low Speed 30Hz. max.
- Min. Pulse 12 microseconds
- Current Consumption ... 15 microAmps max. at 3V
- Reset Pushbutton Enable Terminals 1 & 2
- Reset - Remote .. Contact Closure to terminals 1 & 3
- Min. Pulse 15 microseconds
- Memory Yes

PHYSICAL

- Case Material ABS Cyclolac
- Front Panel Rated Nema 4
- Mounting Plastic Clip
- Operating Temp. . -14°F to +140°F...-10°C to +60°C
- Ambient Humidity 80% RH non-condensing
- Weight 1.77 oz.



DIGITAL COUNTER

MODEL P-102

FEATURES

- Model P-102 is a 6-figure, key reset, electro-mechanical counter designed for use where resetting must be restricted to authorized personnel. The counter is rated at 1,000 counts per minute with a life expectancy in excess of 50,000,000 counts.

APPLICATIONS

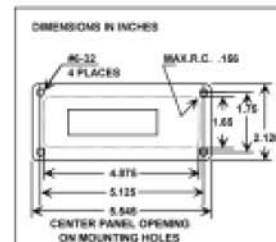
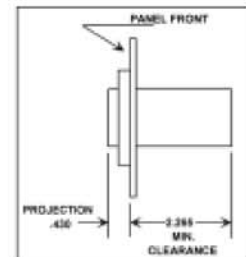
- Designed for use with KWH transducers. Use where restricted resetting is desired.

SPECIFICATIONS

- FIGURES:** 6 figures. White on black
- RESET:** Manual. Lock and key.
- SPEED:** 1,000 counts/minute.
- PULSE TIMING:** Minimum 30 ms "on", 30 ms "off".
- OPERATING LIFE:** Beyond 50 X10⁶ counts
- WEIGHT:** 22 oz.
- ELECTRICAL CHARACTERISTICS:**
- Voltage -** 115 AC (25-60 Hz.) standard. Built-in heavy-duty rectifier.
- Power Consumption -** 7.8 watts.
- Industry tests -** U.L. Recognized, C.S.A. Certified
- Coil and related components -** continuous duty.
- Voltage variation -** ±10 percent, but not more than 10 volts.
- CONSTRUCTION:**
- Frame -** die-cast zinc alloy with protective coating.
- Cover -** die-cast zinc alloy with Hartford Blue baked epoxy finish.
- Drive components, wheels, crystal -** molded, precision-engineered plastics.
- Panel plate -** steel with black baked epoxy finish.
- Metal parts -** all are plated to resist corrosion.



ORDERING INFORMATION
MODEL P-102
MODEL STANDARD NUMBER
 P-102 P32-1026-115AC
DESCRIPTION
 Panelmount
 6-figure, key reset



DIGITAL COUNTERS



8641 S. Warhawk Rd. Conifer, CO 80433
 (303) 670-1099 x11 (303) 679-8949 fax
 Patrick.McAllister@TURNSTILES.us