



## SINGLE FULL HEIGHT TURNSTILE



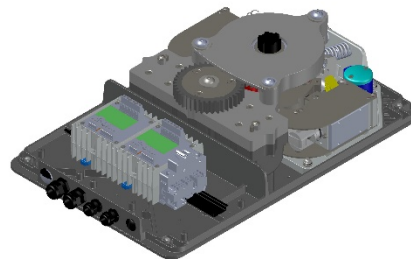


## **SINGLE FULL HEIGHT TURNSTILE**

### **Design and Purpose**

The AG-30-T is a heavy-duty full height high security turnstile. The function of the AG-30-T is to provide controlled access when entering or exiting a facility where high flow traffic is present. It can achieve this both mechanically (no access control system/software) such as a pool gate where the passage would be used for only exiting and no entry. Or electronically (with an access control system, card readers, fingerprint readers etc) for keeping track of who is on and off site. It is constructed with American Pride right here in the USA.

### **Standard Features**



Modern Modular locking mechanism can be configured fail safe or fail secure as well as clockwise or counterclockwise. Because the locking mechanism is modular it is extremely simple and easy to service when needed. Tested to 1 million cycles with zero maintenance.



## SINGLE FULL HEIGHT TURNSTILE



With key override the turnstile can be unlocked manually by key, in either direction for service or temporary events where locking is not required.



All stainless-steel hardware for maximum corrosion resistance and stainless-steel card reader mounting plates are included.



Available in several different finishes including galvanized, powder coated, powder coat over galvanized, and stainless steel.

(See color chart for available colors)

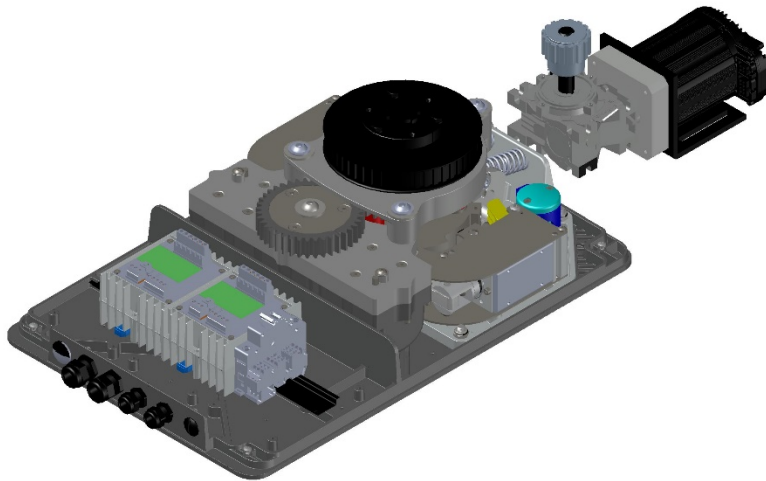


## **SINGLE FULL HEIGHT TURNSTILE**

### **Additional Features and Accessories**

#### **Motorized NO TOUCH Locking Mechanism**

The Motorized NO TOUCH Locking Mechanism makes a single full height turnstile rotate on its own without the need to touch the bars. This is a great solution to help stop the spread of COVID-19 and other viruses alike.





## SINGLE FULL HEIGHT TURNSTILE

### Indicator lights

Indicator lights can be added to turnstiles to help aid the flow of traffic by providing a small red and green light that changes with the status of the passage. For example, when someone approaches the turnstile the indicator light will be red. When someone swipes their card and the turnstile unlocks the red light will shut off and the green light will turn on, signaling that that passage is ready to use. After they pass through and the turnstile locks back up the indicator light will turn back to red. When indicator lights are added they are factory wired and installed right above the card reader plate.



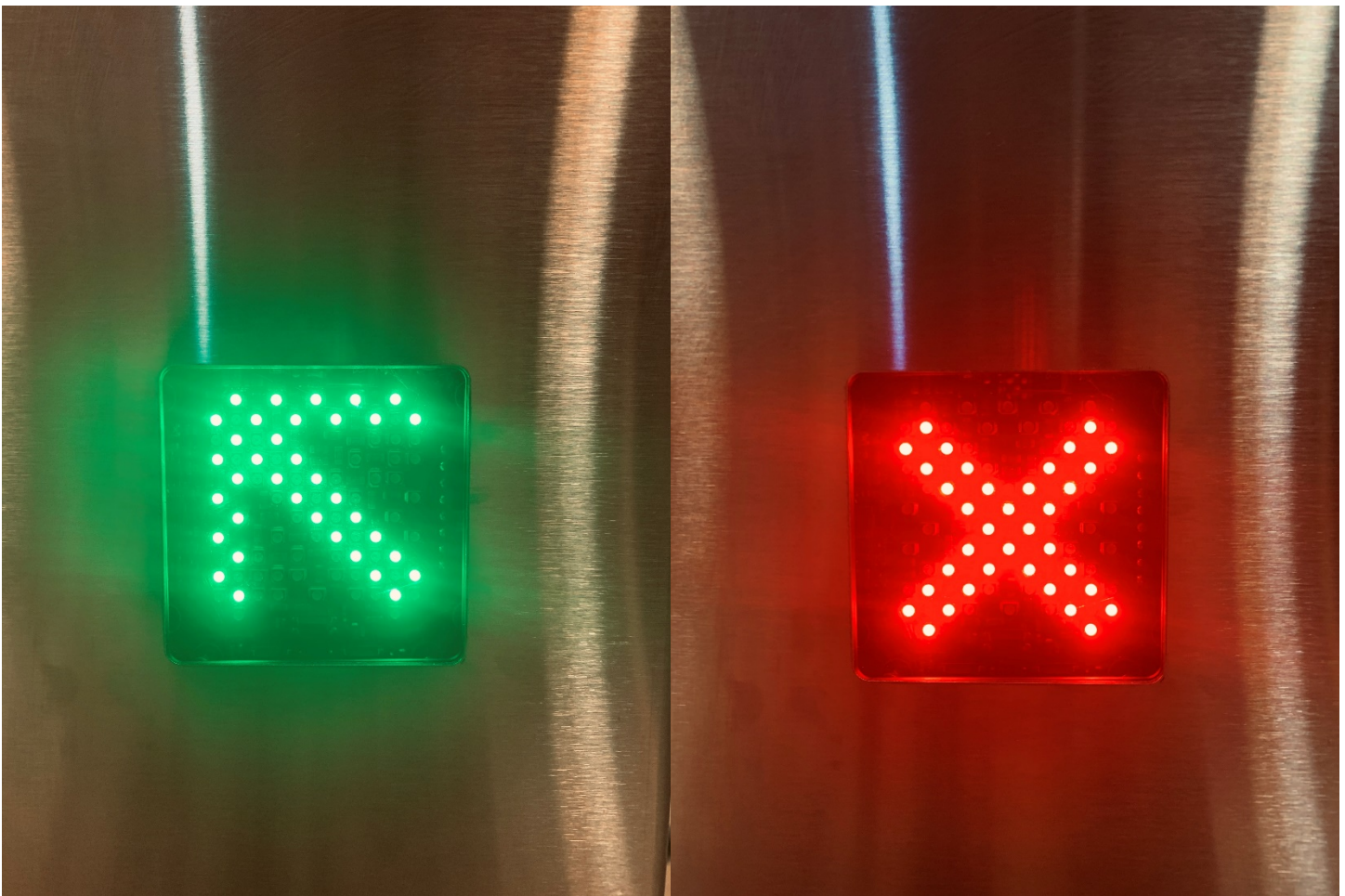




## SINGLE FULL HEIGHT TURNSTILE

### Directional lights

Directional lights can be added to turnstiles to help aid the flow of traffic by providing red x and green arrows indicating if the passage is shut down or operational. For example, when someone is approaching the turnstile from a distance, they will be able to see either a red x or a green arrow on top of the turnstile indicating if the passage is usable or not.

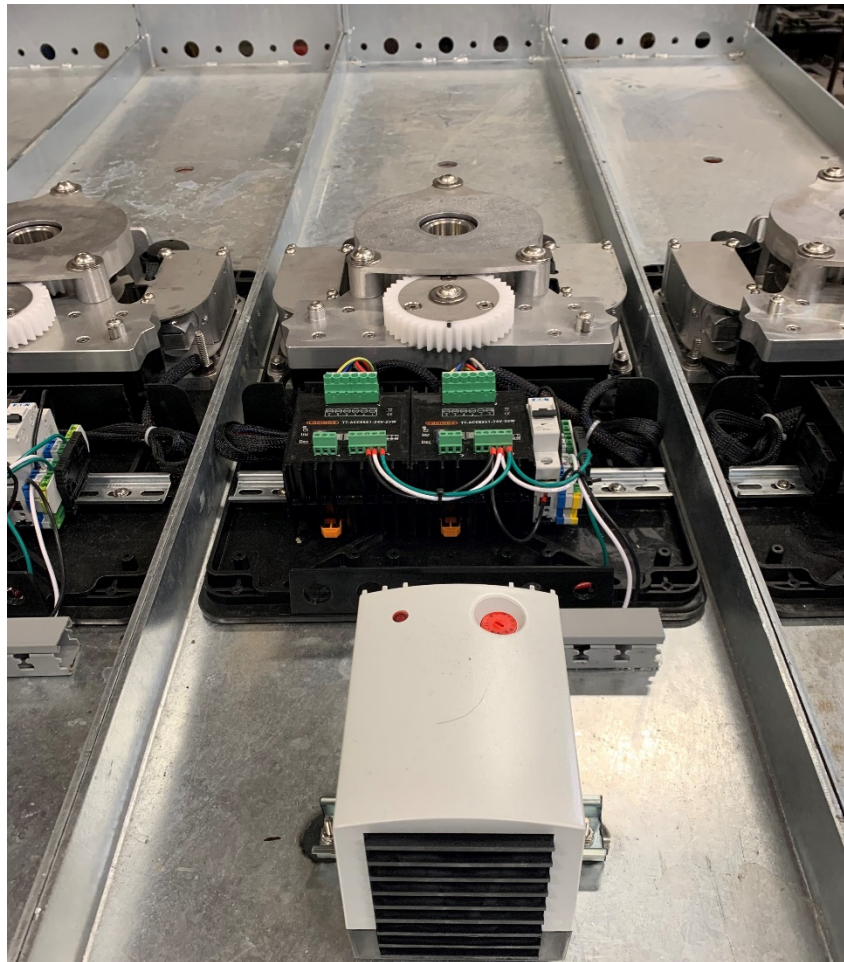




## SINGLE FULL HEIGHT TURNSTILE

### Cold Weather Package

A cold weather package can be added to keep the locking mechanism moving easily in cold temperatures. This includes a thermostat-controlled heater as well as an insulated lid.







## SINGLE FULL HEIGHT TURNSTILE

### Programmable Keypad

Slim Stone Keypad can be added to the turnstile if you wish to be able to unlock the turnstile without an access control system. The slim stone can be programmed to trigger the turnstile to unlock when the correct pin is entered.







## SINGLE FULL HEIGHT TURNSTILE

### Cage Canopy

A cage canopy can be added to the turnstile. A cage canopy is a stainless-steel flat plate that covers the entire top of the cage underneath the header and helps inhibit people from climbing over.

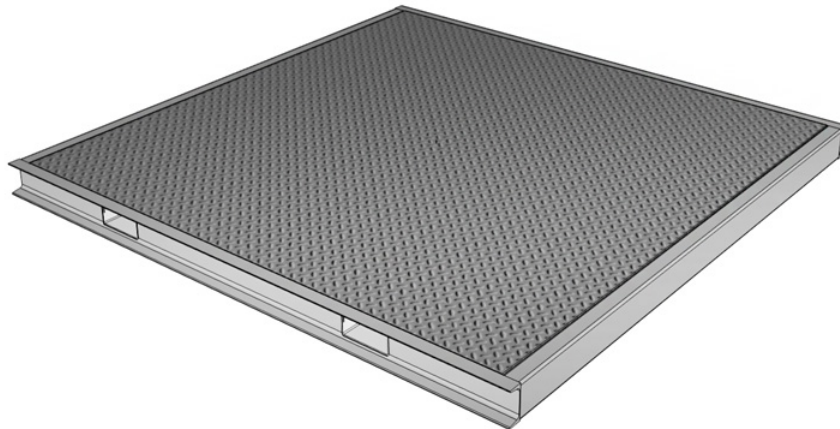




## **SINGLE FULL HEIGHT TURNSTILE**

### **Portable Bases**

Portable bases are available for all our turnstiles. We can provide a turnstile on a portable base or provide the turnstile and the portable base separately, However the turnstile will need to be installed on the base onsite.





# SINGLE FULL HEIGHT TURNSTILE

## SINGLE TURNSTILE NOMENCLATURE

<b>AG</b>	<b>30</b>	<b>T</b>	<b>GV</b>	<b>2E</b>
<b>SERIES</b>	<b>PASSAGE WIDTH IN INCHES</b> 27 30 39 48	<b>T-</b> FOR SINGLE TURNSTILE <b>TT-</b> FOR TANDEM TURNSTILE <b>HHT-</b> HALF HEIGHT TURNSTILE <b>TQH-</b> THREE QUARTER HEIGHT TURNSTILE	<b>GV-</b> GALVANIZED <b>PC-</b> POWDER COATED <b>POG-</b> POWDER COATED OVER GALVANIZED <b>SS-</b> STAINLESS STEEL	<b>2E-</b> 2 WAY ELECTRONIC PASSAGE CONTROL <b>1E-</b> 1 WAY ELECTRONIC PASSAGE CONTROL <b>M-</b> MECHANICALLY LOCKED ONE DIRECTION, FREE EXIT THE OTHER DIRECTION

## GENERAL DIMENSIONS

<b>MODEL</b>	<b>OVERALL WIDTH</b>	<b>MIDDLE CAGE TO CENTER</b>	<b>COMB TO CENTER</b>	<b>OUTER CAGE TO CENTER</b>
AG-27-T	60 1/8"	30 1/8"	30"	27 5/8"
AG-30-T	66 1/8"	33 1/8"	33"	30 5/8"
AG-39-T	85 1/8"	42 5/8"	42 1/2"	40 1/8"
AG-48-T	102 5/8"	51 3/8"	51 1/4"	40 7/8"

## ELECTRICAL REQUIREMENTS

<b>INPUT VOLTAGE</b>	120V (240V SPECIAL ORDER)
<b>FREQUENCY</b>	50/60 HZ
<b>AMPERAGE DRAW</b>	.5 – 1 AMPS (UNLESS ENCLOSURE HEATER IS ADDED = +5 AMPS)
<b>OPERATING TEMPERATURE</b>	-40 °F – 120 °F



## SINGLE FULL HEIGHT TURNSTILE

### ACCESS CONTROL REQUIREMENTS

INPUT TRIGGER	NORMALLY OPEN DRY CONTACT / NO VOLTAGE
MINIMUM TRIGGER PULSE	1 SECOND
RECOMMENDED WIRE SIZE	18G 18/4
FIRE RELEASE	FIRE RELAY REMOVES POWER FROM TURNSTILE IN CASE OF EMERGENCY (TURNSTILE MUST BE CONFIGURED WITH FAIL OPEN SOLENOIDS TO ACHIEVE THIS)





## **SINGLE FULL HEIGHT TURNSTILE**

### **WARRANTY AND DISCLAIMER**

#### **WARRANTY**

THANK YOU FOR YOUR INTEREST IN THE PRODUCTS AND SERVICES OF OUTLAW INDUSTRIES.

THIS LIMITED WARRANTY APPLIES TO PHYSICAL GOODS, AND ONLY FOR PHYSICAL GOODS, PURCHASED FROM OUTLAW INDUSTRIES.

#### **WHAT DOES THIS LIMITED WARRANTY COVER?**

THIS LIMITED WARRANTY COVERS ANY DEFECTS IN MATERIAL OR WORKMANSHIP UNDER NORMAL USE DURING THE WARRANTY PERIOD.

DURING THE WARRANTY PERIOD, OUTLAW INDUSTRIES WILL REPAIR OR REPLACE, AT NO CHARGE, PRODUCTS OR PARTS OF A PRODUCT THAT PROVES DEFECTIVE BECAUSE OF IMPROPER MATERIAL OR WORKMANSHIP, UNDER NORMAL USE AND MAINTENANCE.

#### **WHAT WILL WE DO TO CORRECT PROBLEMS?**

OUTLAW INDUSTRIES WILL REPAIR THE PRODUCT AT NO CHARGE, USING NEW OR REFURBISHED REPLACEMENT PARTS.

#### **HOW LONG DOES THE COVERAGE LAST?**

THE WARRANTY PERIOD FOR PHYSICAL GOODS PURCHASED FROM OUTLAW INDUSTRIES IS 18 MONTHS FROM THE DATE OF SHIPMENT TO THE END USER.

#### **WHAT DOES THIS LIMITED WARRANTY NOT COVER?**

THIS LIMITED WARRANTY DOES NOT COVER ANY PROBLEM THAT IS CAUSED BY:

- CONDITIONS, MALFUNCTIONS OR DAMAGE NOT RESULTING FROM DEFECTS IN MATERIAL OR WORKMANSHIP
- SHIPPING COST FOR REPAIR, OR DAMAGE FROM SHIPPING

#### **WHAT DO YOU HAVE TO DO?**

TO OBTAIN WARRANTY SERVICE, CONTACT US TO DETERMINE THE PROBLEM AND THE MOST APPROPRIATE SOLUTION FOR YOU. IF DEFECTS ARE CONSIDERED PRODUCT MUST BE SHIPPED BY CUSTOMER TO OUTLAW INDUSTRIES, IF DEFECTS ARE COVERED UNDER WARRANTY PRODUCT WILL BE REPAIRED AND SHIPPED BACK TO CUSTOMER BY OUTLAW INDUSTRIES.