

1

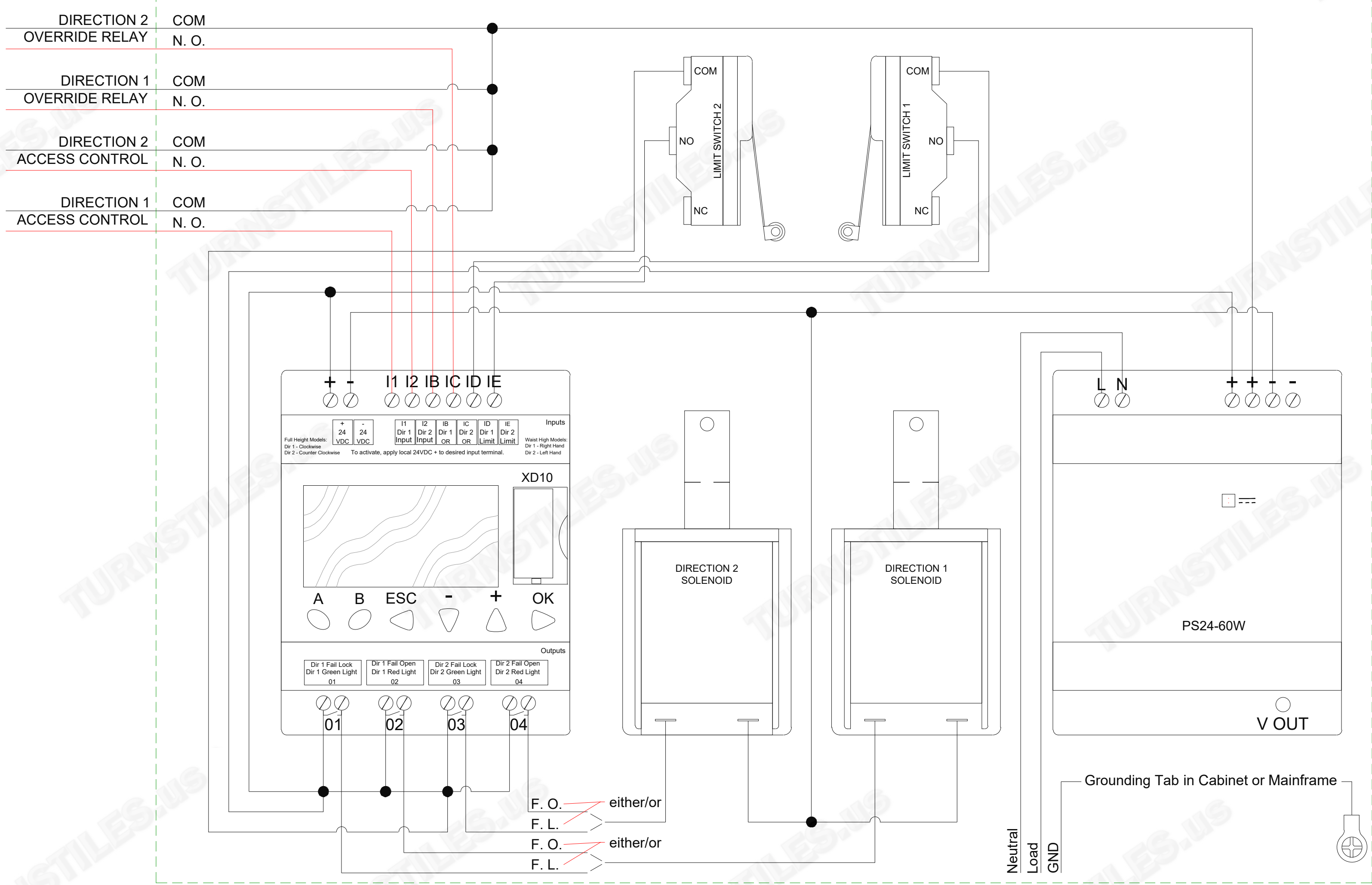
2

3

4

Override  
Relays 1 & 2  
are for connection to  
the FACP and may be  
tied together, freeing  
both directions

TURNSTILE #



STANDARD WIRING DIAGRAM FOR  
ELECTRONICALLY CONTROLLED  
6500 SERIES CONTROL HEAD GEN. 3  
OPTIONAL LED WIRING NOT SHOWN

F. O. = Fail Open  
F. L. = Fail Lock  
Factory set but  
Field Adjustable

Input Voltage  
100-240 VAC  
1 Phase  
1.1 - .6A Max  
50/60 Hz

FIRST DRAWN	BY
09/28/20	CJC
REVISED	BY

**COPYRIGHT © TURNSTILES.US**  
Copyright © Turnstiles.us All rights reserved. Reproduction or translation of this work without the express written permission of TURNSTILES.US is unlawful and is an infringement of intellectual property belonging to TURNSTILES.US.  
All drawings and/or designs are restricted for use exclusively with a purchase, installation, and/or support from Turnstiles.us. Any other use of these materials is a violation of copyright law. Request for additional information should be addressed to the Legal Department, Turnstiles.us.

**TURNSTILES.US**  
www.TURNSTILES.us  
Call 303 670 1099 \* Text 303 918 9787  
patrick.mcallister@turnstiles.us

6500 Series Control Head - Gen. 3  
Typical Schematic for use with our  
Full Schematics & Wiring Diagrams

DWG	09-28-20 6500 Series Control Head Diagram
-----	---

DATE 09-28-20

SHEET - 1 OF 1