

AG-SERIES SINGLE TURNSTILE

INSTALLATION MANUAL



UNPACKAGING

VERIFY YOU HAVE ALL PARTS AND HARDWARE LISTED BELOW

- 1.TURNSTILE HEADER AND LOCKING MECHANISM WITH LID
- 2.TURNSTILE ROTOR AND BOTTOM BEARING ASSEMBLY
- 3.TURNSTILE CAGE
- 4.TURNSTILE COMB
- 5.INCLUDED INSTALLATION HARDWARE BOX (SEE HARDWARE CHECKLIST IN BOX)
- 6.TOUCH UP PAINT (POWDER COATED ONLY)

GENERAL DIMENSIONS

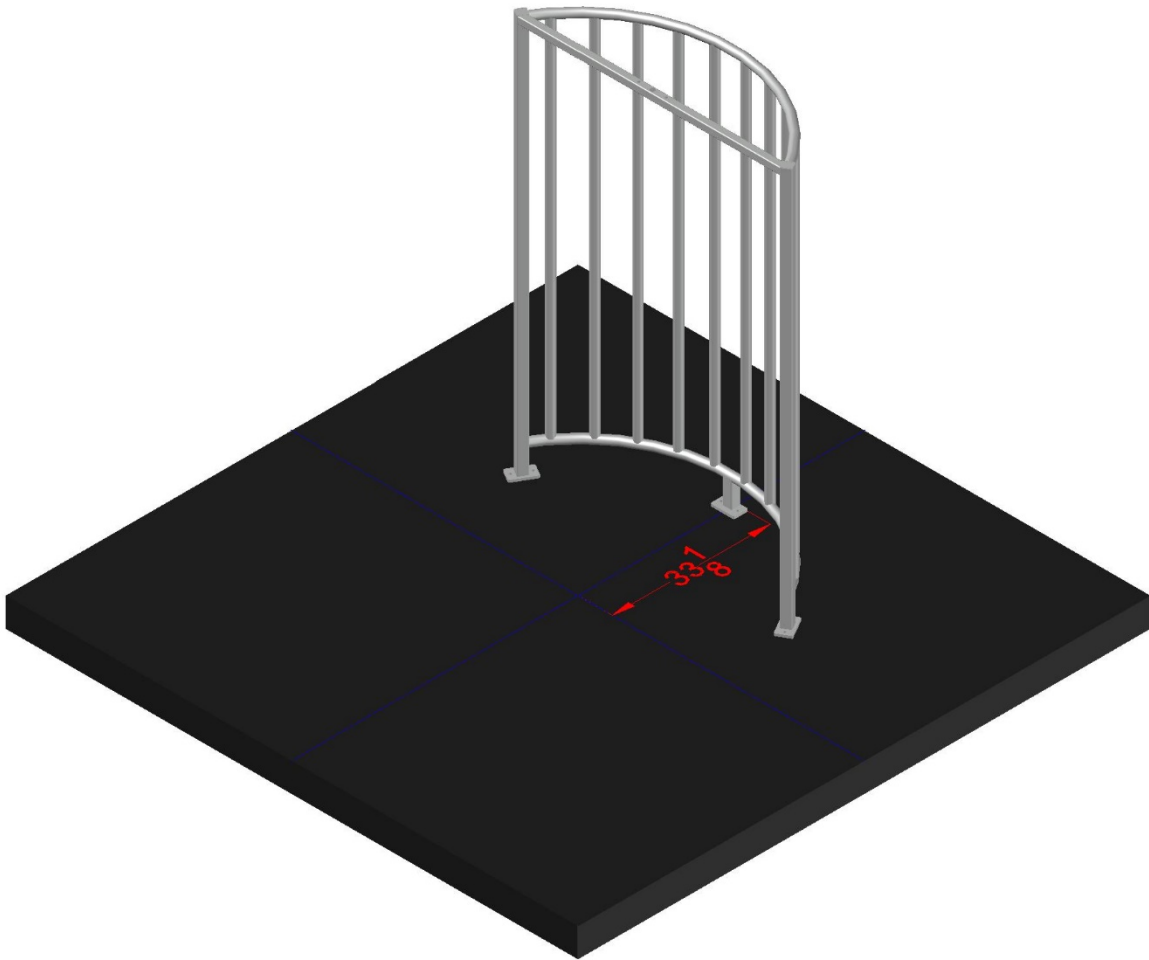
<u>MODEL</u>	<u>OVERALL WIDTH</u>	<u>MIDDLE CAGE TO CENTER</u>	<u>COMB TO CENTER</u>	<u>OUTER CAGE TO CENTER</u>
AG-27-T	60 1/8"	30 1/8"	30"	27 5/8"
AG-30-T	66 1/8"	33 1/8"	33"	30 5/8"
AG-39-T	85 1/8"	42 5/8"	42 1/2"	40 1/8"
AG-48-T	102 5/8"	51 3/8"	51 1/4"	40 7/8"

SINGLE TURNSTILE NOMENCLATURE

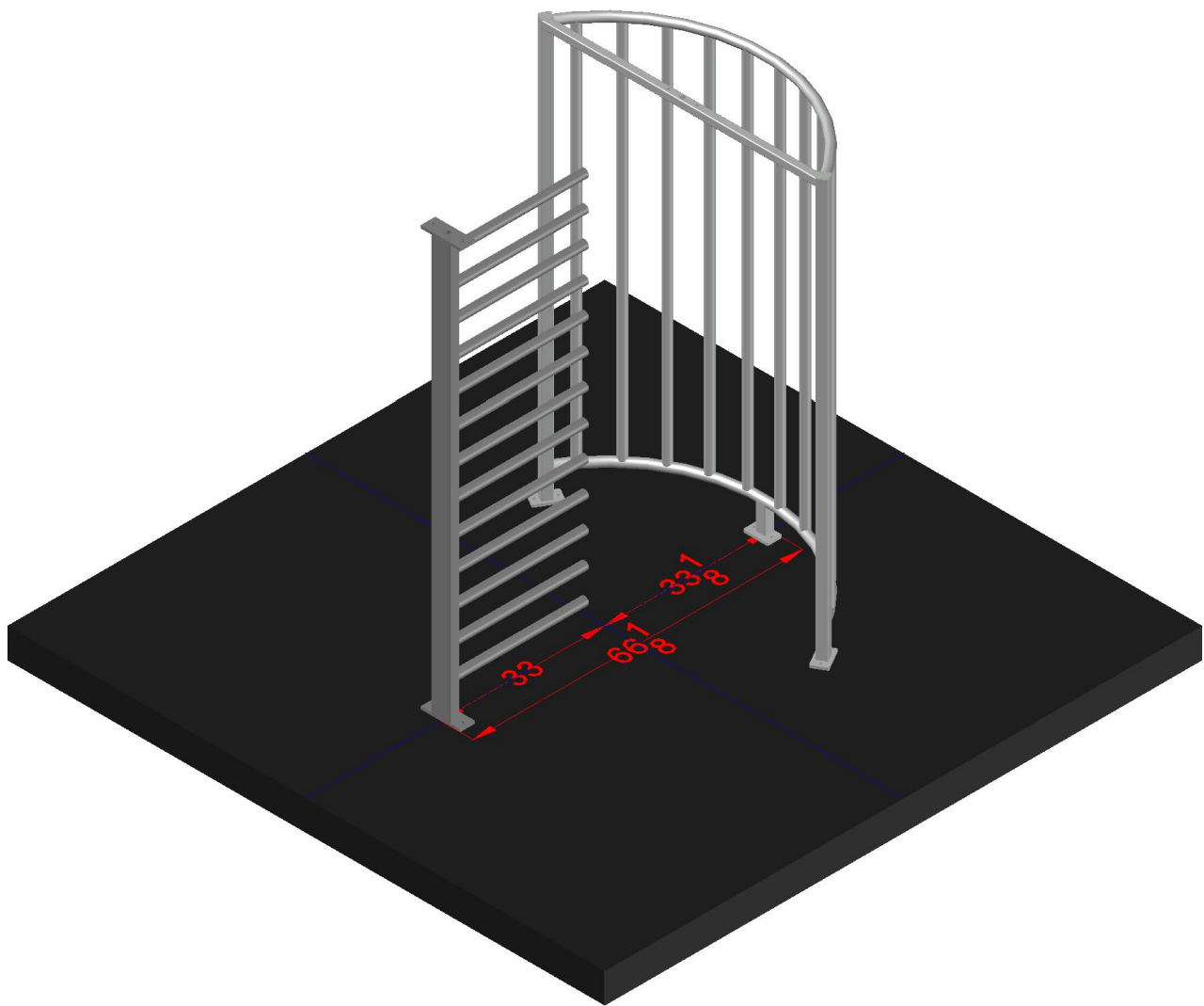
AG	30	T	GV	2E
SERIES	PASSAGE WIDTH IN INCHES 27 30 39 48	T- FOR SINGLE TURNSTILE TT- FOR TANDEM TURNSTILE HHT- HALF HEIGHT TURNSTILE TQH- THREE QUARTER HEIGHT TURNSTILE	GV- GALVANIZED PC- POWDER COATED POG- POWDER COATED OVER GALVANIZED SS- STAINLESS STEEL	2E- 2 WAY ELECTRONIC PASSAGE CONTROL 1E- 1 WAY ELECTRONIC PASSAGE CONTROL M- MECHANICALLY LOCKED ONE DIRECTION, FREE EXIT THE OTHER DIRECTION

INSTALLATION:

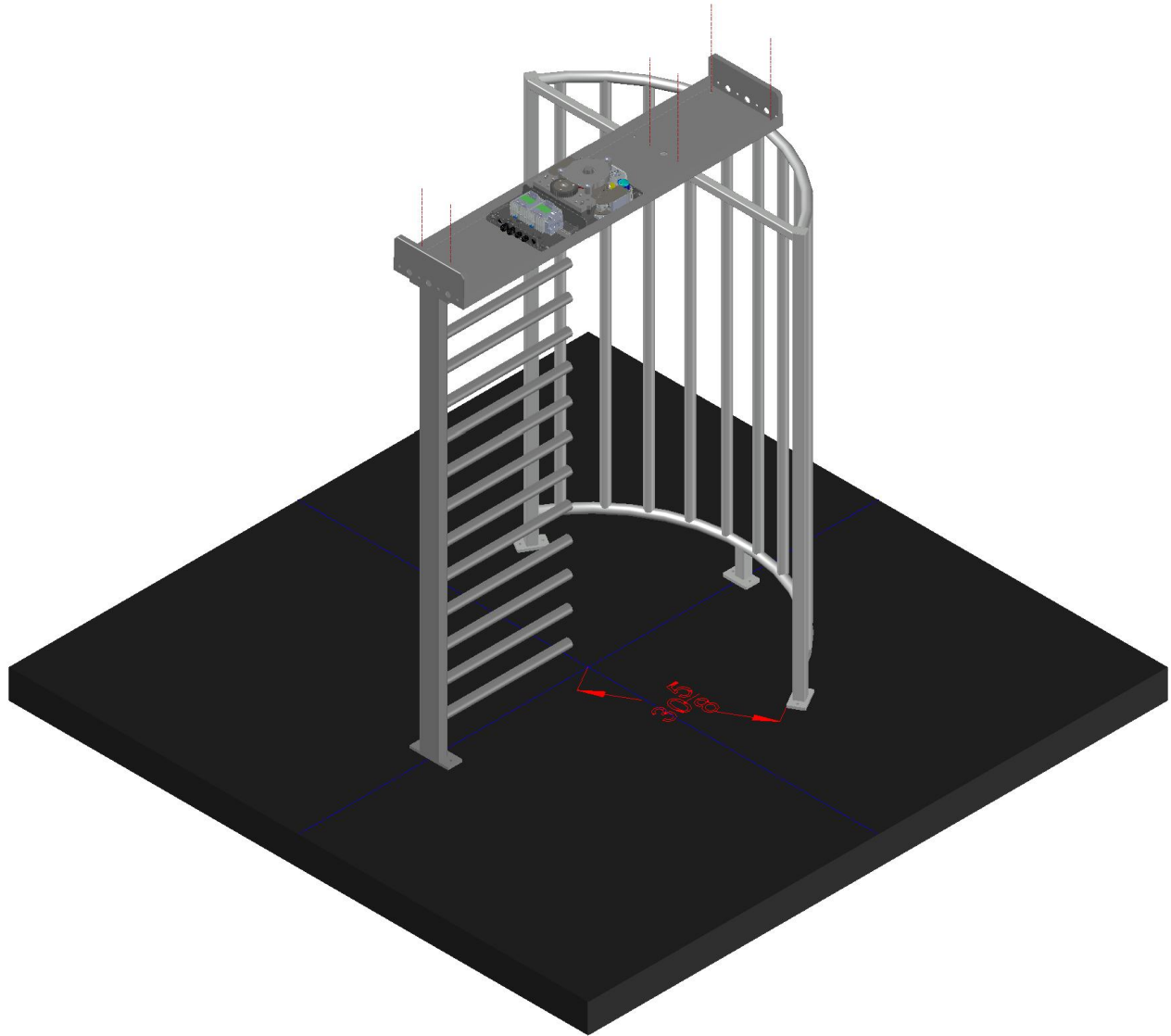
1. STARTING WITH A LEVEL CONCRETE SLAB OR EQUIVALENT, BEGIN THE LAYOUT PROCESS BY SNAPPING A CENTER LINE AND A CROSS LINE FOR THE TURNSTILE ENTRANCE. STAND UP THE CAGE ON THE CENTER LINE AND MEASURE THE APPROPRIATE DISTANCE FOR THE MODEL OF TURNSTILE. (SEE GENERAL DIMENSIONS CHART FOR MEASUREMENTS)



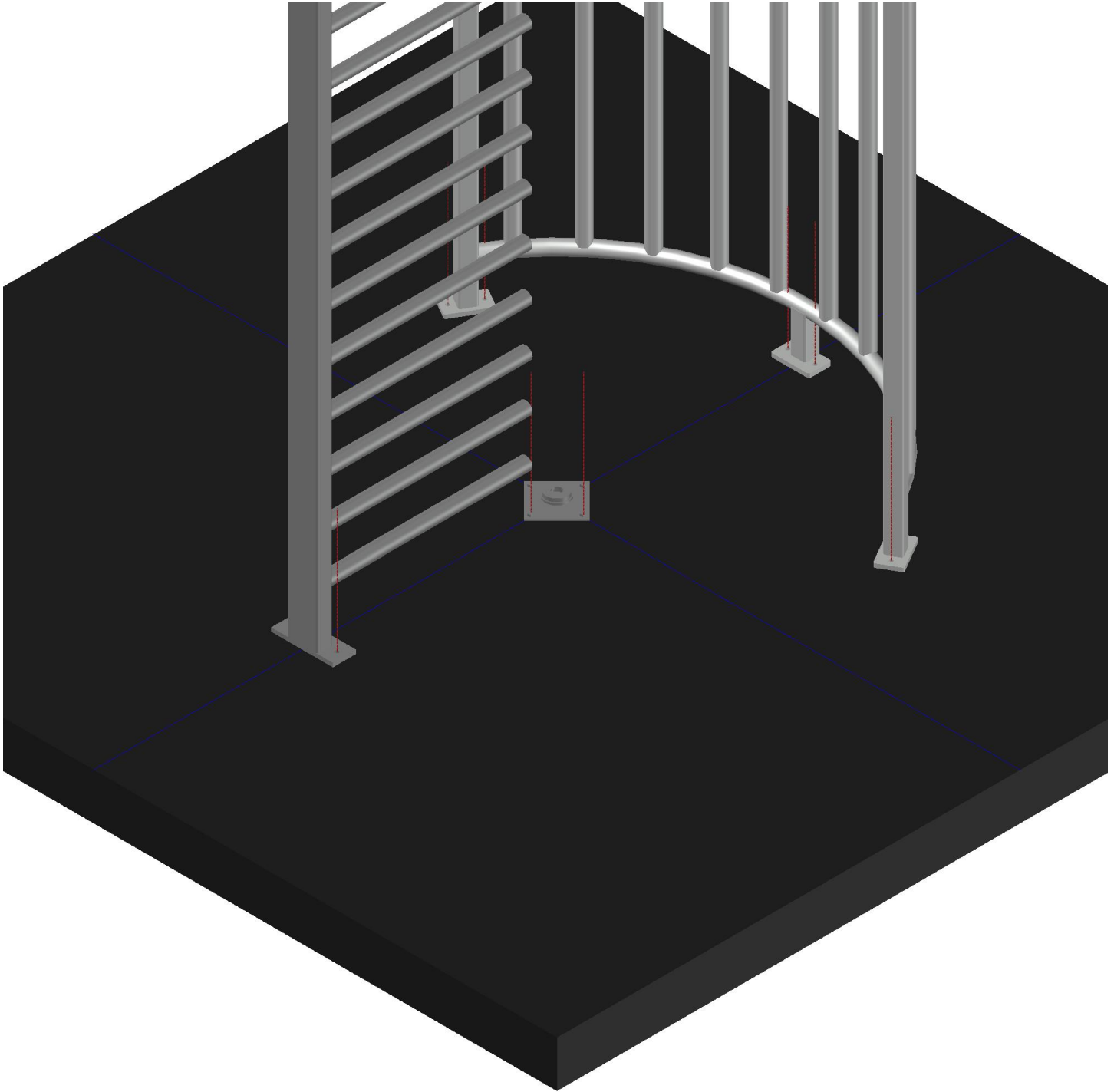
2. POSITION COMB THE PROPER DISTANCE FROM THE CAGE ACCORDING TO THE MODEL OF TURNSTILE YOU HAVE PURCHASED (SEE CHART). FIND SOMETHING APPROXIMATELY 6" TO BLOCK UP COMB.



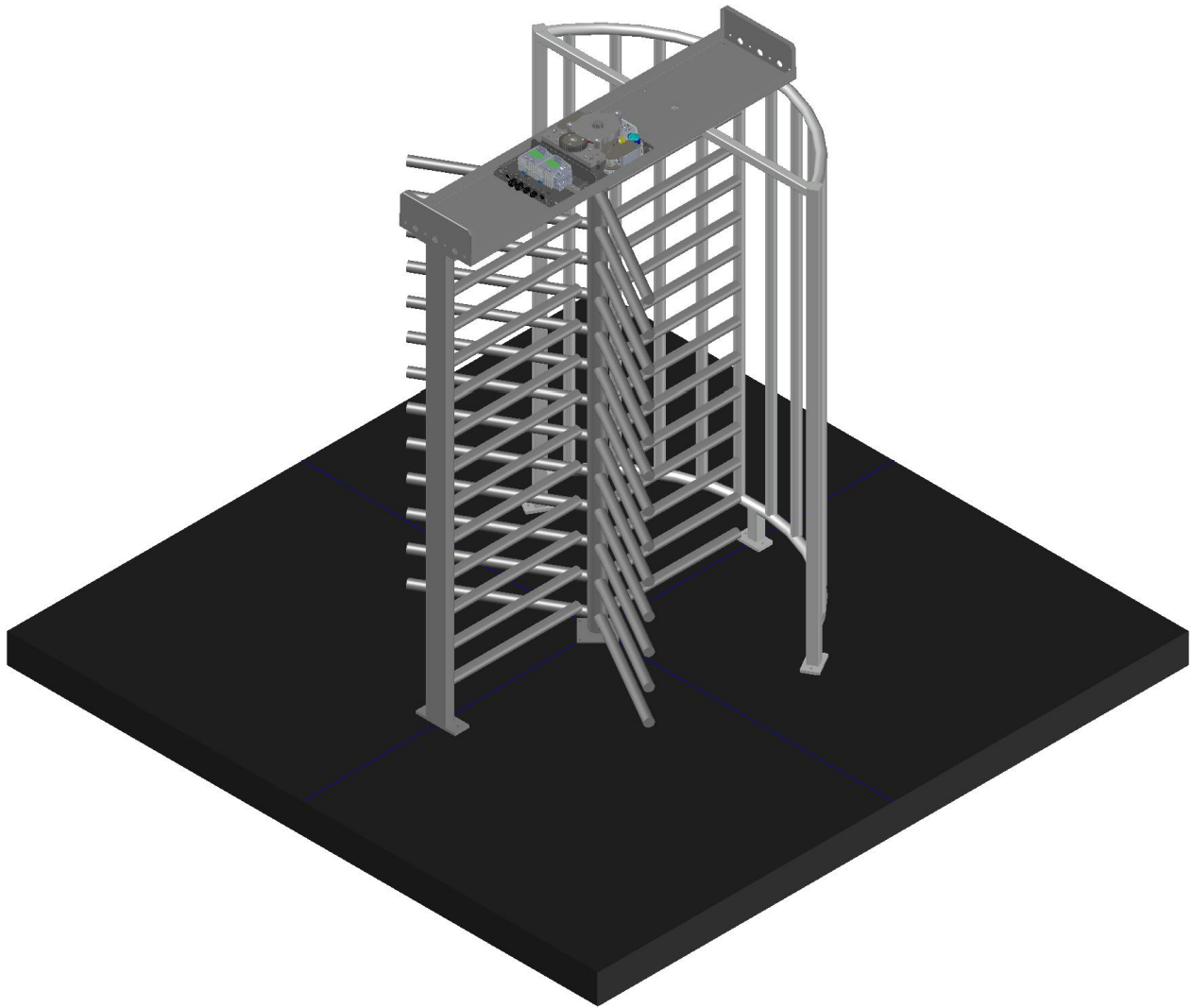
3. ATTACH HEADER WITH PROVIDED BOLTS BUT DO NOT TIGHTEN.
PUT TOGETHER LOOSE SO IT IS EASY TO MOVE AND ADJUST.



4. CHECK ALL MEASUREMENTS ACCORDING TO MODEL LAYOUT CHART. ONCE ALIGNED MARK THE CAGE, COMB, AND BOTTOM BEARING ANCHORING HOLES.

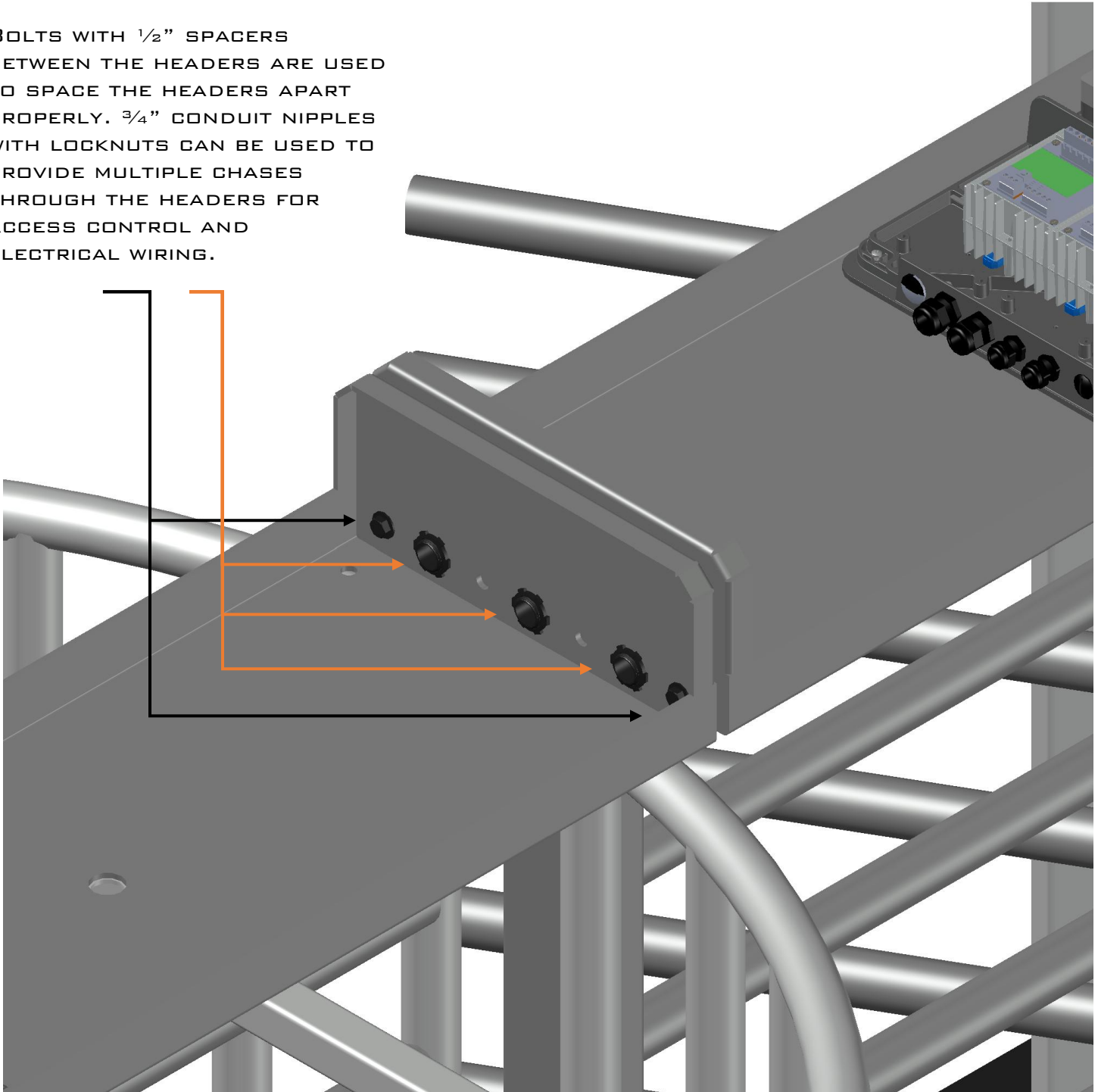


5. MOVE THE TURNSTILE SO YOU CAN ACCESS MARKS AND HAMMER DRILL HOLES FOR ANCHORS. INSTALL ANCHORS AND PLACE THE TURNSTILE ON THE ANCHORS. MAKE SURE TURNSTILE IS LEVEL AND PLUMB, TIGHTEN ANCHORS AND MOUNTING BOLTS.

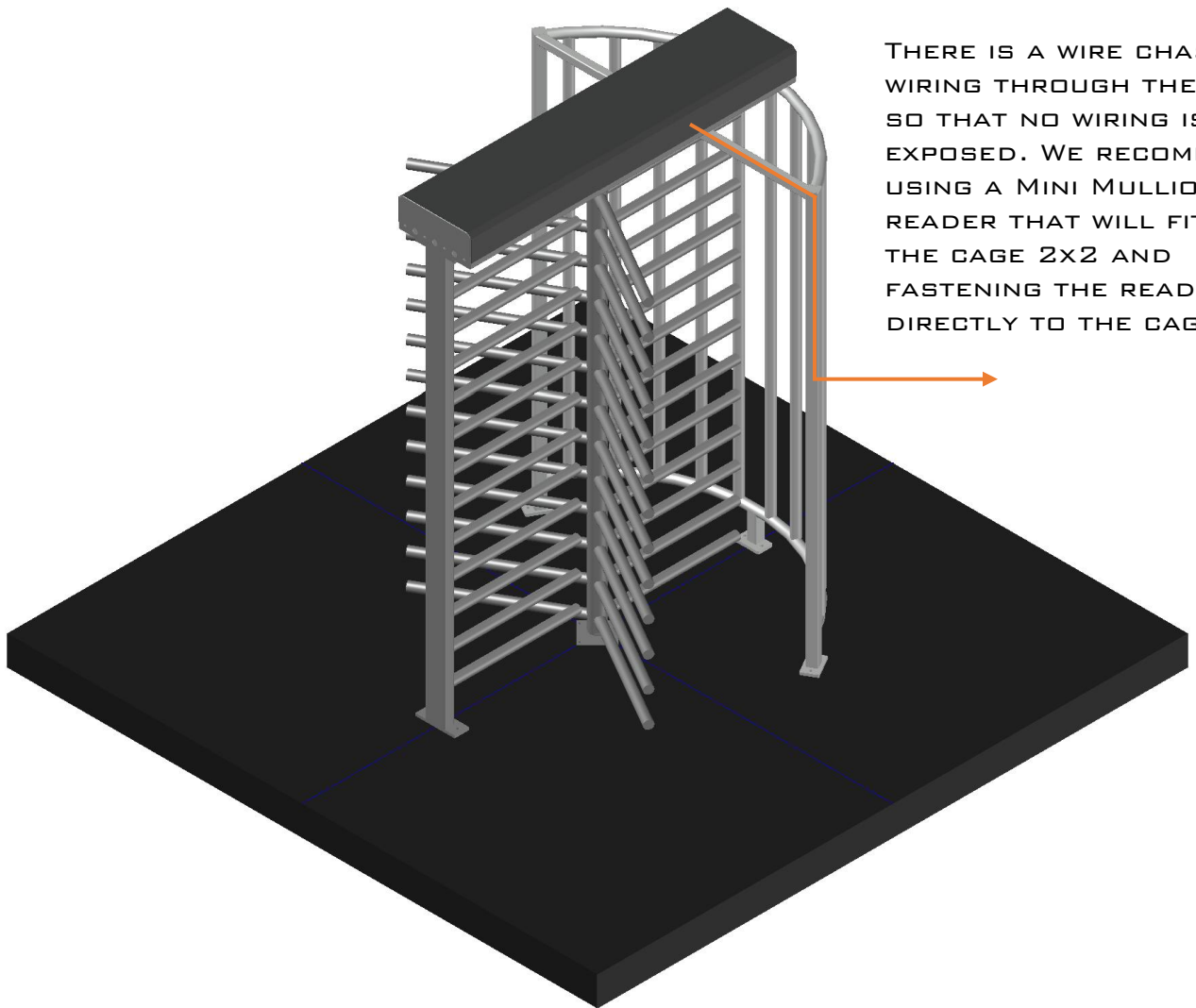


6. IF YOU HAVE ADDITIONAL TURNSTILES OR ADA GATES THAT GO IN THE ENTRANCE ARRAY, USE THE BOLTS IN THE HARDWARE BOX TO BOLT THEM TOGETHER WITH THE 1/2" SPACERS BETWEEN THE HEADERS.

BOLTS WITH 1/2" SPACERS BETWEEN THE HEADERS ARE USED TO SPACE THE HEADERS APART PROPERLY. 3/4" CONDUIT NIPPLES WITH LOCKNUTS CAN BE USED TO PROVIDE MULTIPLE CHASES THROUGH THE HEADERS FOR ACCESS CONTROL AND ELECTRICAL WIRING.



7. INSTALL THE LID. CONSULT WITH ELECTRICIANS AND ACCESS CONTROL CONTRACTORS TO APPLY POWER AND CONTROL THE TURNSTILE WITH ACCESS CONTROL SYSTEM.



THERE IS A WIRE CHASE FOR WIRING THROUGH THE CAGE SO THAT NO WIRING IS EXPOSED. WE RECOMMEND USING A MINI MULLION READER THAT WILL FIT ON THE CAGE 2X2 AND FASTENING THE READER DIRECTLY TO THE CAGE.

ELECTRICAL REQUIREMENTS

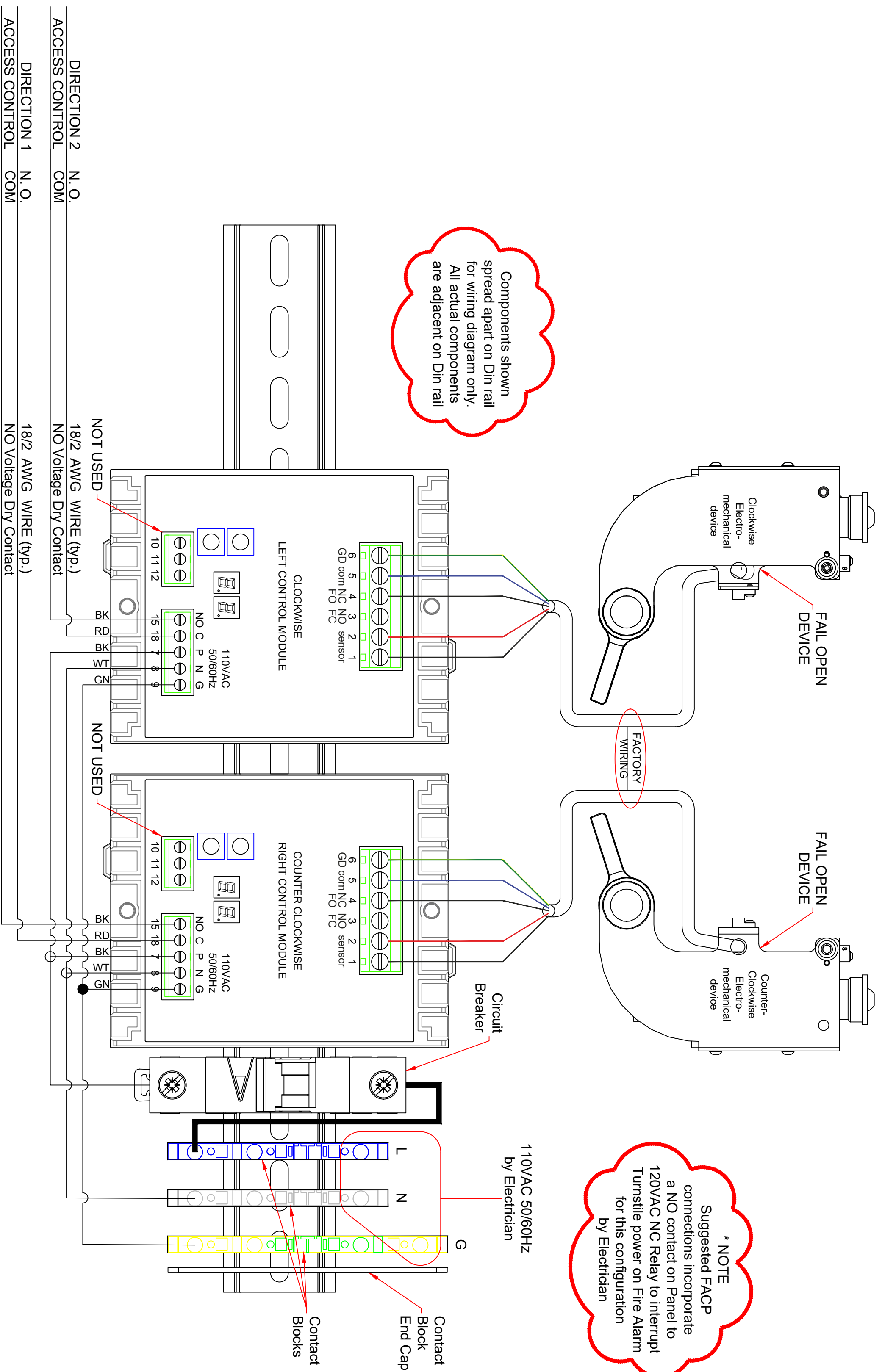
INPUT VOLTAGE	120V (240V SPECIAL ORDER)
FREQUENCY	50/60 HZ
AMPERAGE DRAW	.5 – 1 AMPS (UNLESS ENCLOSURE HEATER IS ADDED = +5 AMPS)
OPERATING TEMPERATURE	-40 °F – 120 °F

ACCESS CONTROL REQUIREMENTS

INPUT TRIGGER	NORMALLY OPEN DRY CONTACT / NO VOLTAGE
MINIMUM TRIGGER PULSE	1 SECOND
RECOMMENDED WIRE SIZE	18G 18/4
FIRE RELEASE	FIRE RELAY REMOVES POWER FROM TURNSTILE IN CASE OF EMERGENCY (TURNSTILE MUST BE CONFIGURED WITH FAIL OPEN SOLENOIDS TO ACHIEVE THIS)

AG-SERIES SINGLE TURNSTILE WIRING SCHEMATIC

* DIMENSIONS MAY VARY IN ACTUAL INSTALLATION - FABRICATION CHANGES RESERVED - SIMILAR EQUIPMENT MAY BE SUBSTITUTED *



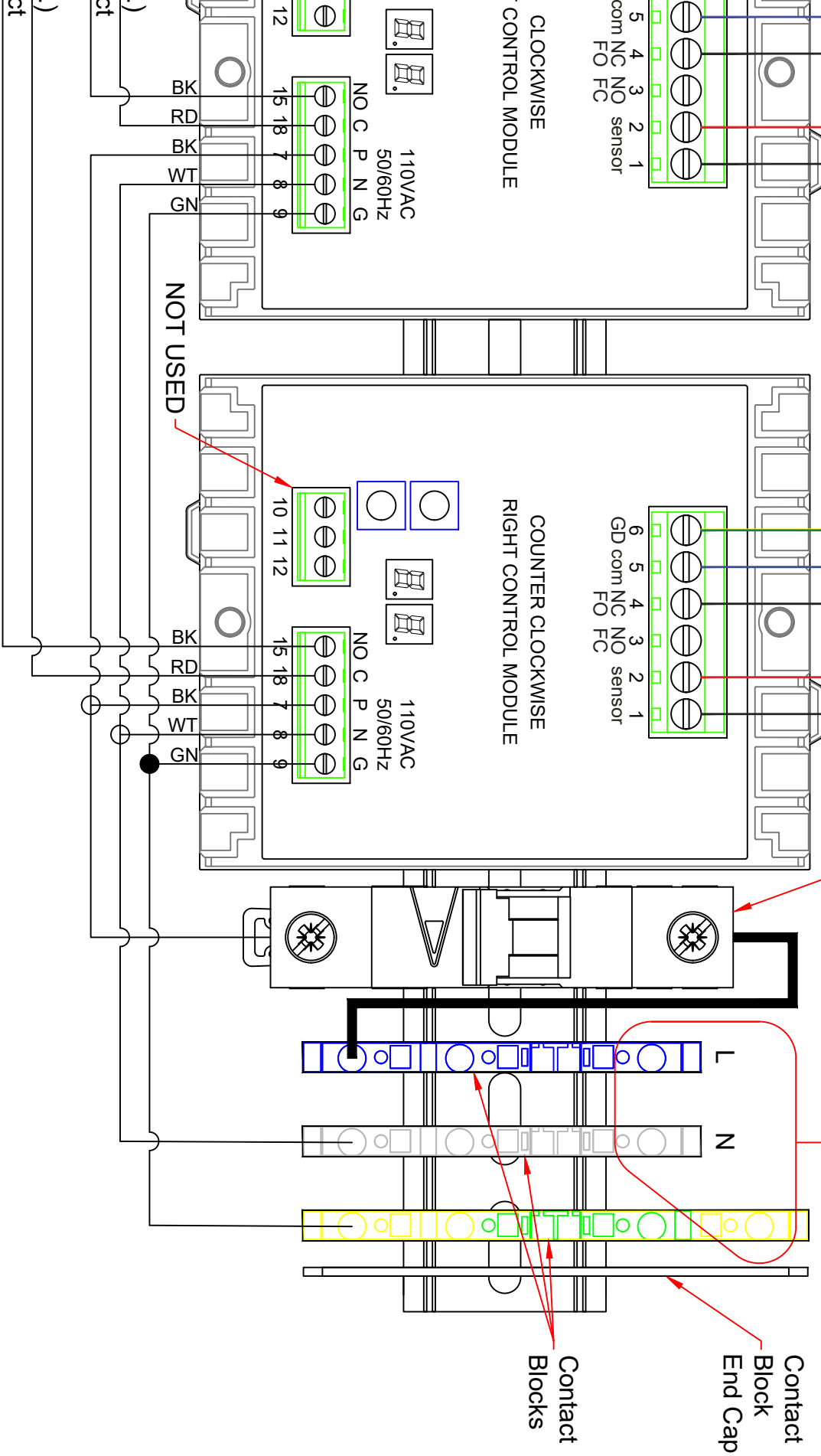
*** NOTE**
Suggested FACP connections incorporate a NO contact on Panel to 120VAC NC Relay to interrupt Turnstile power on Fire Alarm for this configuration by Electrician

Components shown spread apart on Din rail for wiring diagram only. All actual components are adjacent on Din rail

DIRECTION 2 N.O.
ACCESS CONTROL COM
DIRECTION 1 N.O.
ACCESS CONTROL COM

NOT USED
18/2 AWG WIRE (typ.)
NO Voltage Dry Contact

NOT USED
18/2 AWG WIRE (typ.)
NO Voltage Dry Contact



TURNSTILES.us
www.TURNSTILES.us
Call 303 670 1099 * Text 303 918 9787
patrick.mcallister@turnstiles.us

FIRST DRAWN	BY
01-01-20	JJM JR
REVISED	BY

COPYRIGHT © TURNSTILES.US
Copyright © Turnstiles.us All rights reserved. Reproduction or translation of this work without the express written permission of TURNSTILES.us is unlawful and is an infringement of intellectual property belonging to TURNSTILES.us. All drawings and/or designs are restricted for use exclusively with a purchase, installation, and/or support from Turnstiles.us. No part of this publication may be reproduced, stored in a retrieval system, or transmitted in any form or by any means, Request for additional information should be addressed to the Legal Department, Turnstiles.us.

WIRING DIAGRAM	
AG Series Full Height Turnstile Wiring Schematic (No Counter)	
DWG	AG SERIES WIRING DIAGRAM
DATE	01-01-20
SHEET - 1 OF 1	

4

3

2

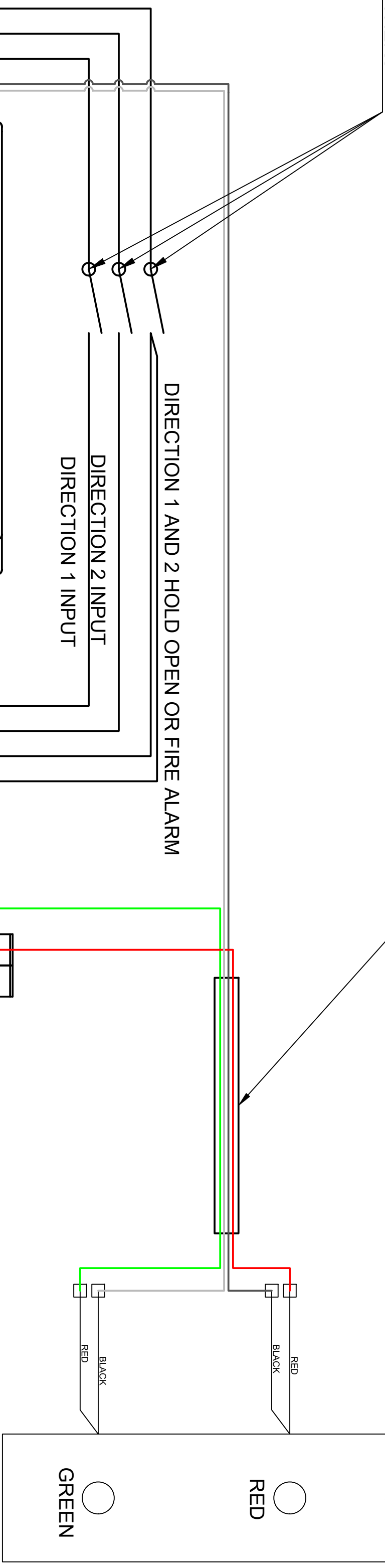
1

D

NO DRY CONTACTS PROVIDED BY OTHERS

FACTORY SUPPLIED 18-4 WIRING

DIRECTION 1 INDICATOR LIGHT



C

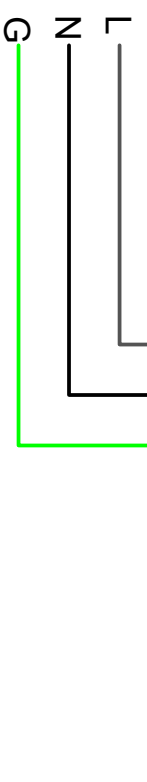
NC

C

B

B

110V
2A
16A WITH COLD WEATHER PACKAGE



A

A



* This document is protected by the Copyright Laws of the United States Copyrights Office.
 * This document is not to be distributed without written permission.
 * This design is subject to change at anytime without notice.
 * Field measurement may vary



PROJECT
LOGIC CONTROLLER WIRING
 TITLE
LOGIC CONTROLLER FOR FULL HEIGHT TURNSTILES RELAY VERSION

APPROVED	SIZE	CODE	DWG NO	REV
CHECKED	C			
DRAWN	Jesse Moses	SCALE 1:1	WEIGHT	SHEET 1/1
	5/25/2021			

4

3

2

1

AG-SERIES SINGLE TURNSTILE PARTS LIST

Fail Open Module

Part# AG-FO1



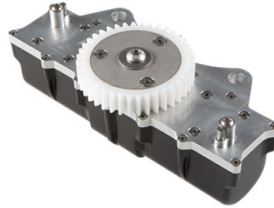
Fail Close Module

Part# AGFC-2



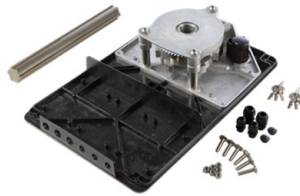
Hydraulic Damper

Part#AG-DM3



Base Mechanism

Part# AG-BM3

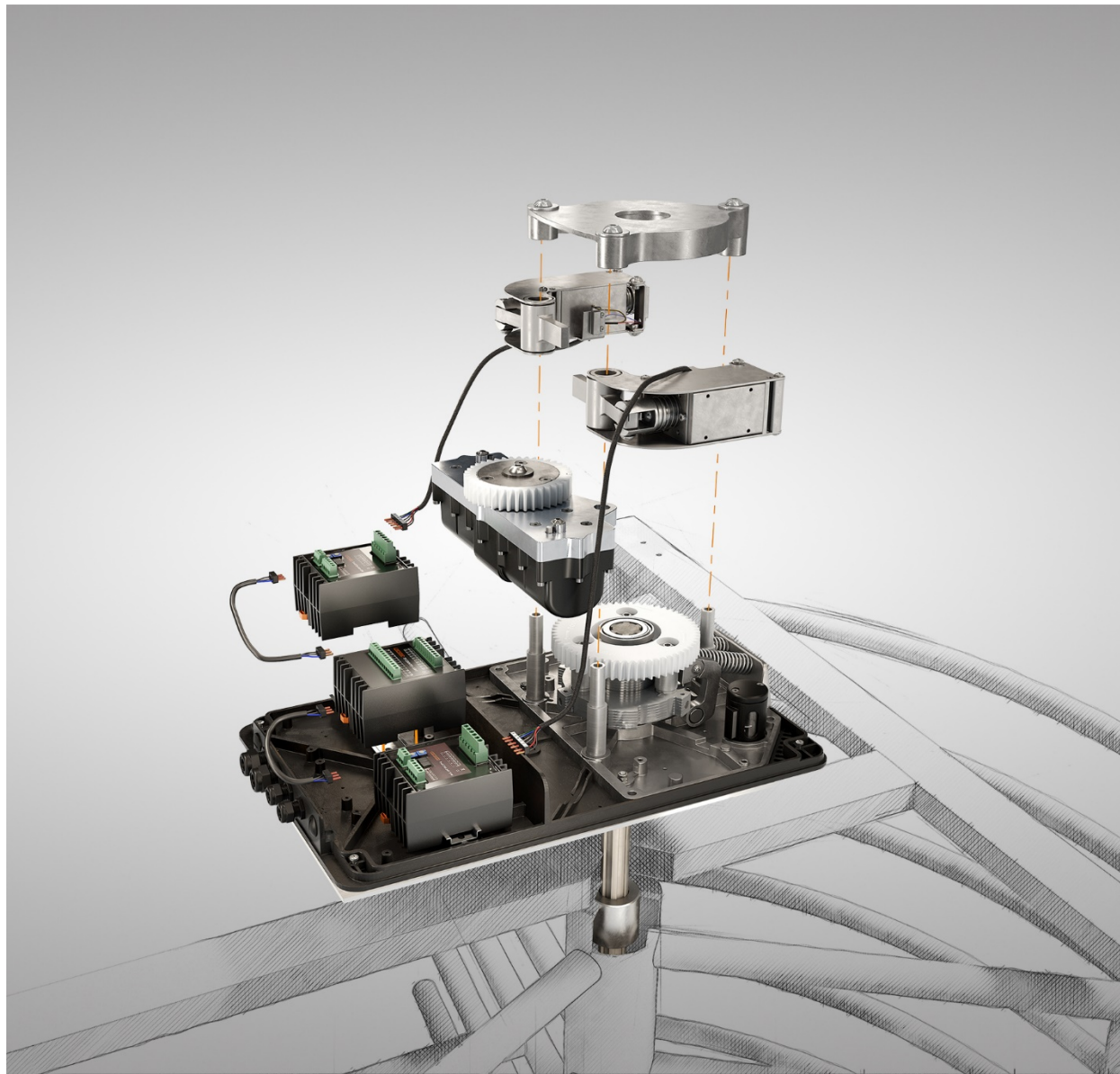


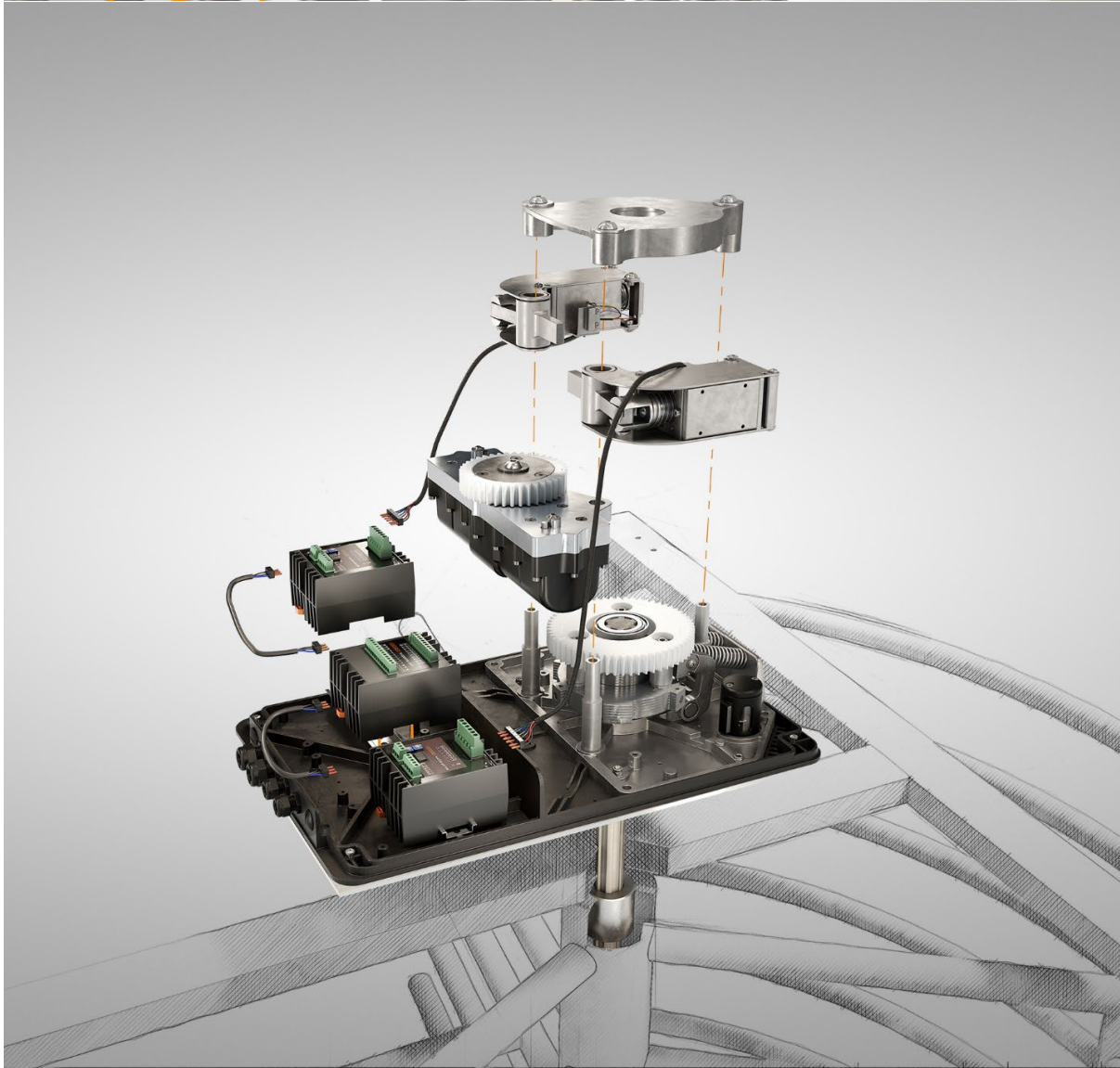
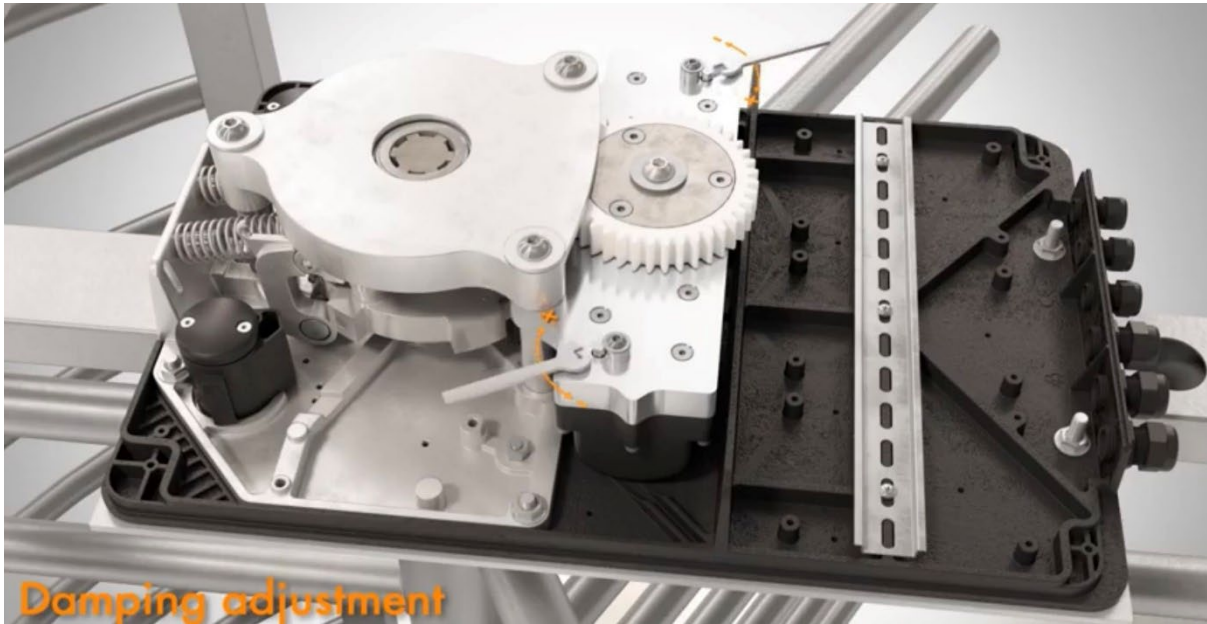
Bottom Bearing

Part# AG-BCC



Exploded View





AG-SERIES SINGLE TURNSTILE MAINTENANCE

Annual Recommended Inspection and Maintenance for AG Series Turnstiles

- Remove the lid from the header.
- Clean out the header of any dust and debris.
- Take out center shaft by lifting it out of the top of the locking mechanism (you may need a pair of channel locks to grip the shaft).
- Add grease when reinserting the shaft, for ease of future maintenance.
- Lift the center rotor off of the bearing, inspect bearing, re-grease with red grease or replace if necessary. Make sure that the rotor is oriented properly with the arms facing the middle / center of the cage. If replacement is necessary the bottom bearing part number is AGRB10.
- Test electrical function by triggering turnstile to unlock in each direction.
- Shut off the equipment breaker in the header of the turnstile, make sure that fail-open and fail-close are functioning properly.
- If your turnstile is equipped with lights, verify that all directional lights are working properly, replace bulbs or module as necessary.