

IX System

IP network-compatible intercom

Master Station (IX-MV)

Web Setting Manual

Software version 2.00 or later

Before configuring and using the system, read Setting Manual and Operation Manual (PDF) carefully.

*For the installation and connection of each device, refer to Installation Manual.

Important

- **Begin installation after reading and understanding the procedures for system configuration.**
- **The setting data should be backed up and stored in a safe location after configuration is complete.**

Table of contents

System settings: For the entries for the Web settings, refer to "6. System settings list" ➤ [P.49](#).

Introduction.....	4
1. Notational symbols in this manual	5
2. Device Type	6
3. Product manuals	7
4. Configuring the system.....	8
5. Flowcharts for configuring the system.....	9
 Startup and Configuration	 40
1. System requirements	41
2. Part names	42
3. Connecting to a PC	44
4. Log in to the Web server of the station to be configured	45
5. Settings window	47
5.1. How to configure.....	48
6. System settings list.....	49
 Configuring the station	 55
1. Station Information	56
1.1. Identification	56
1.2. ID and Password	57
1.3. Language.....	58
1.4. Time.....	59
2. Network Settings	61
2.1. IP Address	61
2.2. DNS.....	65
2.3. SIP.....	66
2.4. Multicast Address	66
2.5. Video	67
2.6. Audio	68
2.7. Packet Priority	70
2.8. NTP	71
3. System Information	73
3.1. Location Registry.....	73
3.2. Address book ♣	74
3.3. Group ♣	79
3.4. Custom Sound Registry.....	81

4. Contact / Audio Output Settings	83
4.1. Contact Input	83
4.2. Output Specifications.....	84
5. Call Settings	85
5.1. Called Stations	85
5.2. Incoming call.....	85
5.3. All Page	87
6. Function Settings.....	88
6.1. Door Release Settings.....	88
6.2. Contact Input Call.....	91
6.3. Paging Settings	93
6.4. Network Camera Integration.....	93
6.5. E-mail Settings	96
6.6. CGI Integration	102
6.7. SIF Integration	103
7. Transfer Settings	104
7.1. Absent Transfer Settings	104
7.2. Delay Transfer Settings	105
7.3. Transfer Schedule Settings	106
8. Station Hardware Settings.....	108
8.1. Speed Dial Button Settings.....	108
8.2. Privacy Setting.....	109
8.3. Volume Settings	109
8.4. Communication Settings.....	110
8.5. Monitor Setting	111
8.6. Master Station Display Settings.....	111
9. Maintenance	112
9.1. Firmware Update	112
9.2. Initialization.....	113
9.3. Settings File Management.....	114
9.4. System Log.....	116




Introduction

This manual describes how to set up Master Station through a web browser.

IX system offers a separate manual for Installation, Settings, and Operations. Refer to the relevant manual.

1. Notational symbols in this manual

The following symbols identify important information concerning operational procedures.

 Caution	Indicates important instructions that should be observed or avoided. Please read and understand before proceeding.
 Important	Indicates what should be known before operation. Please read and understand before proceeding.
 Point	Indicates tips and additional information for the operation.

- Page references are shown as "> **P. XX.**"
- The screen shots in this manual may vary from the actual screens shown.

2. Device Type

The stations are shown as below.




Device type	Example Model Names
Master Station	IX-MV
Video Door Station	IX-DA, IX-DF, IX-DF-HID-I* ¹ , IX-DF-HID* ¹ , IX-DF-2RA* ¹ , IX-DF-PI* ² , IX-DF-P* ²
Audio Only Door Station	IX-BA, IX-SS, IX-SS-2RA* ¹

*¹ North America Only

*² Except North America

3. Product manuals

Read the Installation Manual, Setting Manual, and Operation Manual. Have the person who installs or configures the product refer to the relevant manuals.

	Installation Manual (Comes with Master Station or Door Station.) Refer to when installing and connecting Master Station and Door Station. (For installer)
	Quick Start Programming Guide (Comes with Master Station.) Describes how to configure a basic IX system. (For system administrator)
<p>DVD-ROM</p>  <p>This comes with Master Station.</p>	IX Support Tool Setting Manual (Electronic format (PDF file).) Describes how to configure and maintain the system using IX Support Tool. (For system administrator)
	IX Master Station Operation Manual (Electronic format (PDF file).) Describes how to operate Master Station. (For user)
	IX Door Station Operation Manual (Electronic format (PDF file).) Describes how to operate Door Station. (For user)
	IX Master Station Web Setting Manual (Electronic format (PDF file).) Describes how to set up Master Station for the Internet connection. (For system administrator)
	IX Door Station Web Setting Manual (Electronic format (PDF file).) Describes how to set up Door Station for the Internet connection. (For system administrator)
	IX-MV Installation Manual (Electronic format (PDF file).) Describes how to install Master Station. (For system administrator and Installer)
	IX-DA, IX-BA Installation Manual (Electronic format (PDF file).) Describes how to install Door Station. (For system administrator and Installer)
	Quick Start Programming Guide (Electronic format (PDF file).) Describes how to configure a basic IX system. (For system administrator)

4. Configuring the system

After installing and connecting all stations, the system will need to be fully configured before it will be operational.

IX system can be configured in one of the two methods below. Choose one method. Using the IX Support Tool is the recommended method.

(1) Configure the system using the "IX Support Tool" application

- Install the application on a PC and use to create the configuration for all stations.
- Search for IX stations on the network; assign and upload configuration data for the system.
- Monitor the system for failures.

For more detail, refer to IX Support Tool Setting Manual.

(2) Configure each station through a Web browser (Web configuration)

- Access each station through a Web browser, and configure each station individually.
- When using the Web browser method, each station must be configured separately.
- When configuring the system through a browser, the IX Support Tool cannot be used.

Important

- **Once the system has been configured through a browser, the settings cannot be transferred to IX Support Tool. The IX Support Tool is recommended to manage settings.**
- **If the settings configured with IX Support Tool are altered through a browser, some items may not be correctly updated within the IX Support Tool data.**

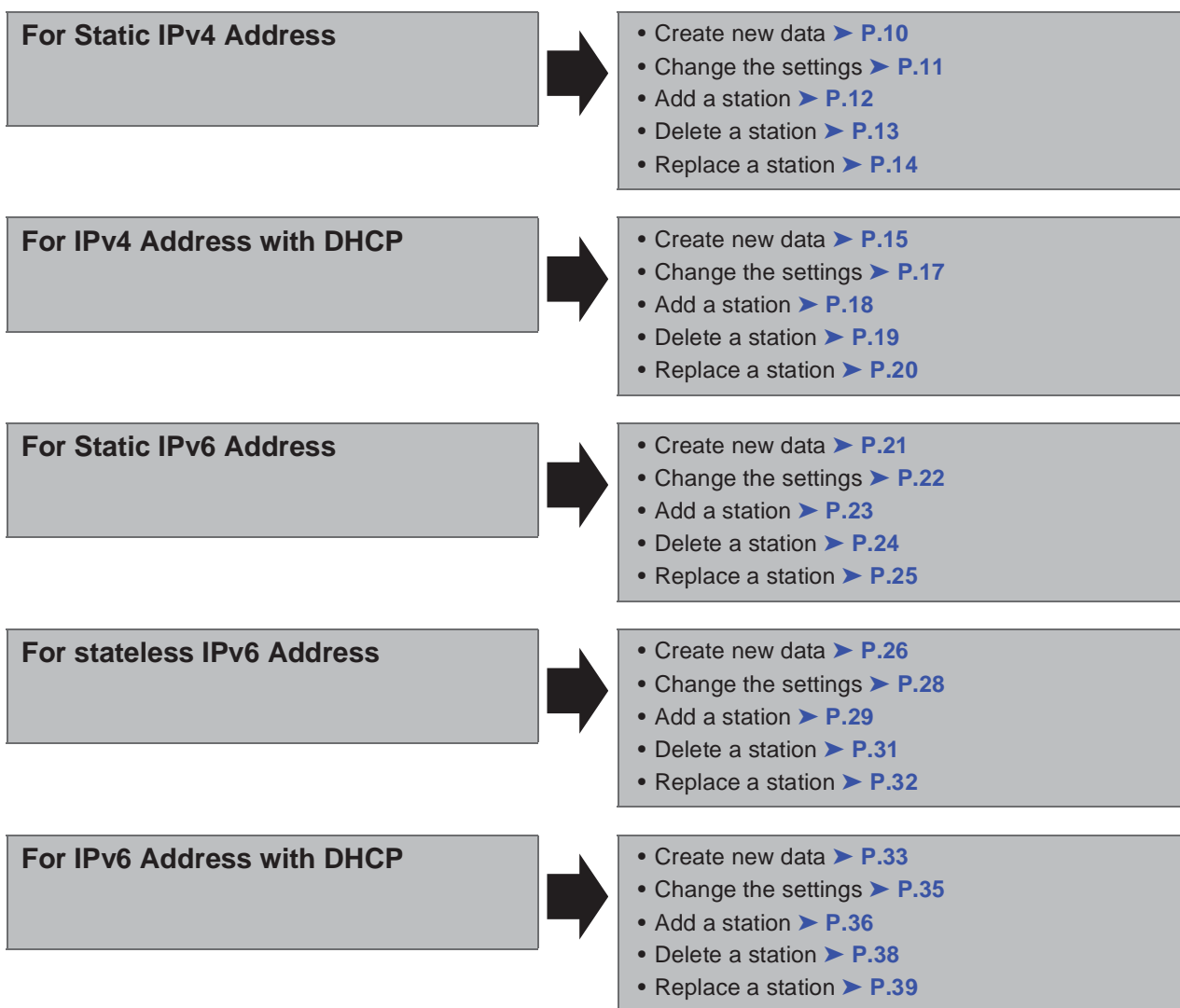
5. Flowcharts for configuring the system

When configuring the system through a browser, follow the flowchart that fits the application.

Save the settings after configuring the system. Otherwise, it may become impossible to restore the settings after maintenance or after-sales servicing.

Flowcharts are for configuration through a Web browser.

When configuring the system with Support Tool, refer to IX Support Tool Setting Manual.



Introduction

■ For Static IPv4 Address

● Create new data

Use flowchart to create new configuration, e.g., when installing a new system.

1. Connect PC to the station to be configured.

The default IP address of the stations is 192.168.1.160. Ensure the PC IP address is within the proper domain. Connect stations one at a time to avoid IP address conflict.

"3. Connecting to a PC" ➤ [P.44](#)




2. Log in to the Web server of the station.

"4. Log in to the Web server of the station to be configured" ➤ [P.45](#)



3. Set "1.3. Language" ➤ [P.58](#).

Click  to update the settings.



4. Configuring the station.

"Configuring the station" ➤ [P.55](#)



5. Configure other stations in the same manner.

For Door Station configuration, refer to IX Door Station Web Setting Manual.



6. Set "LANGUAGE" of each Master Station.

Refer to IX Master Station Operation Manual.



7. Done.

Important

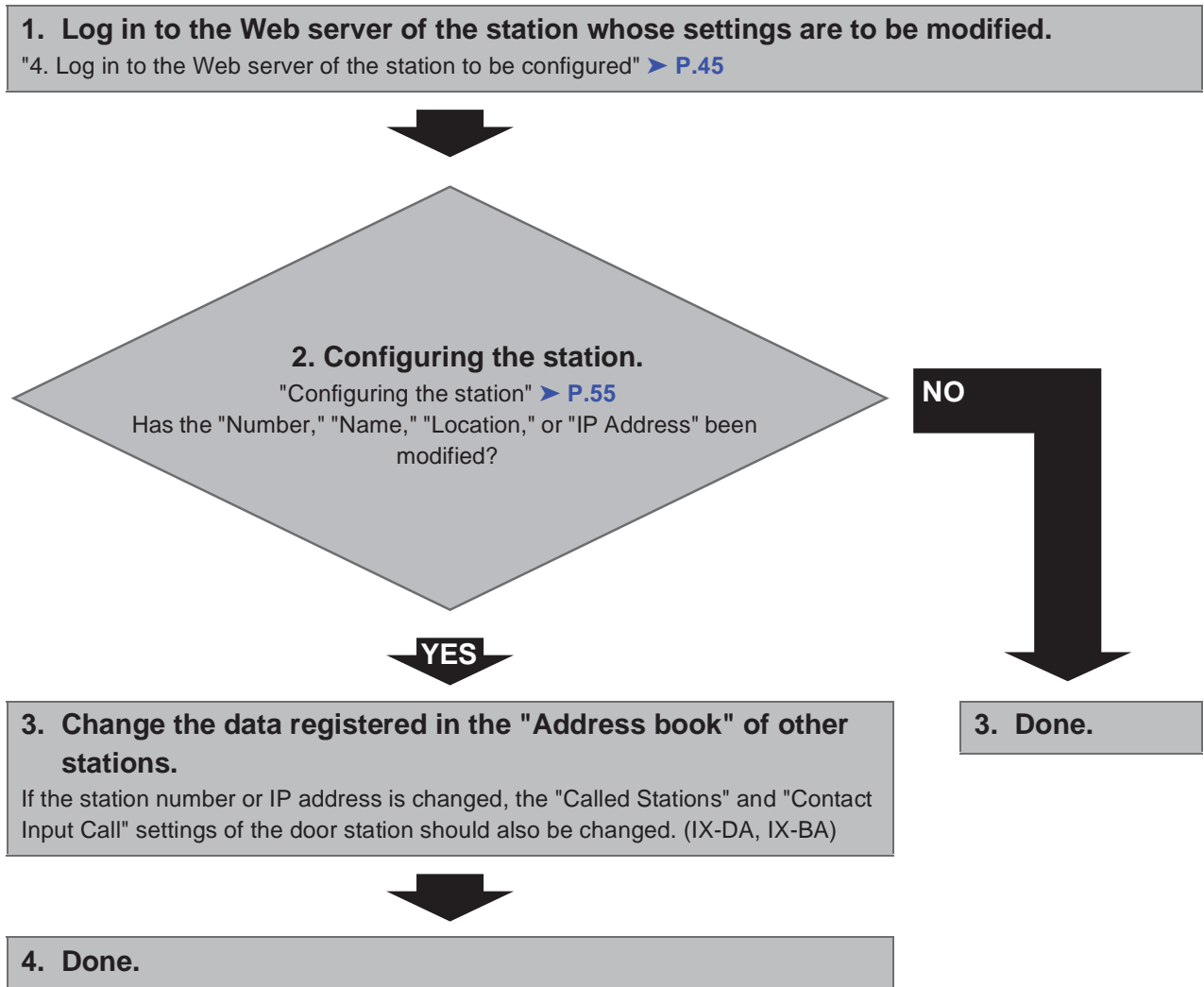
Save the settings after configuring the system.

Refer to "9.3. Settings File Management" ➤ [P.114](#).

If the setting file is lost, station settings will need to be reconfigured.

● **To change the Settings (For Static IPv4 Address)**

Use flowchart to change the Settings.



Important

Save the settings after configuring the system.

Refer to "9.3. Settings File Management" > P.114.

If the setting file is lost, station settings will need to be reconfigured.

● **To add a station (For Static IPv4 Address)**

Use flowchart to add a station.

1. Connect PC to the station to be added.

The default IP address of the stations is 192.168.1.160. Ensure the PC IP address is within the proper domain. Connect stations one at a time to avoid IP address conflict. "3. Connecting to a PC" > [P.44](#)




2. Log in to the Web server of the station to be added.

"4. Log in to the Web server of the station to be configured" > [P.45](#)



3. Set "1.3. Language" > [P.58](#).

Click  to update the settings.



4. Configuring the station.

"Configuring the station" > [P.55](#)



5. Register the data of the added station to the "Address book," "Called Stations," and "Contact Input Call" of the other stations.



6. Set "LANGUAGE" of the added Master Station.

Refer to IX Master Station Operation Manual.



7. Done.

Important

Save the settings after configuring the system.

Refer to "9.3. Settings File Management" > [P.114](#).

If the setting file is lost, station settings will need to be reconfigured.

● **To delete a station (For Static IPv4 Address)**

Use flowchart to delete a station.

1. Delete the station from the "Address book," "Called Stations," and "Contact Input Call" of all other stations.

Caution

If a page is placed without deleting the station from the "Address book," "Called Stations," and "Contact Input Call", the operation may be delayed.



2. Done.

Important

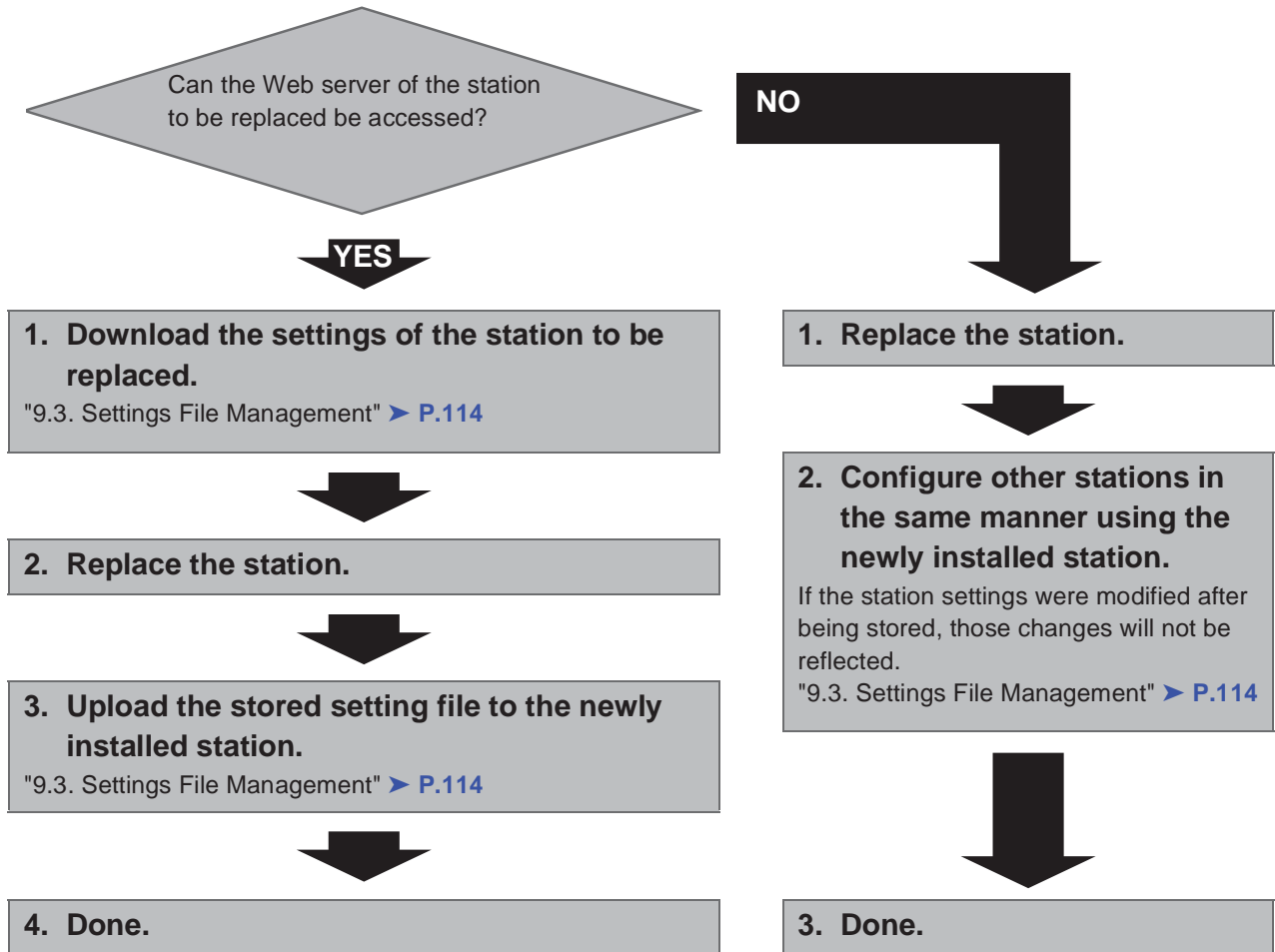
Save the settings after configuring the system.

Refer to "9.3. Settings File Management" ➤ [P.114](#).

If the setting file is lost, station settings will need to be reconfigured.

● **To replace a station (For Static IPv4 Address)**

Use flowchart to replace a station.



Important

Save the settings after configuring the system.

Refer to "9.3. Settings File Management" > P.114.

If the setting file is lost, station settings will need to be reconfigured.

■ For IPv4 Address with DHCP

● Create new data

Use flowchart to create new configuration, e.g., when installing a new system.

1. Verify managed DHCP environment exists and that each station has been assigned a static IP address.



2. Connect PC to the station to be configured.

The default IP addresses of the stations are identical. Connect one at a time.

"3. Connecting to a PC" > [P.44](#)



3. Log in to the Web server of the station.

"4. Log in to the Web server of the station to be configured" > [P.45](#)



4. Set "IP addressing method" to "IPv4 DHCP."

"■IP addressing method" > [P.61](#)

The station is restarted and the IP address assigned by DHCP server will be assigned.

If a DHCP address cannot be assigned, it will default to "192.168.1.160."



5. Log in to the Web server of the station with the assigned IP Address.

"4. Log in to the Web server of the station to be configured" > [P.45](#)



6. Set "1.3. Language" > [P.58](#).

Click  to update the settings.



7. Configuring the station.

"Configuring the station" > [P.55](#)



8. Configure other stations in the same manner using Steps 2 through 6.

For Door Station configuration, refer to IX Door Station Web Setting Manual.



9. Set "LANGUAGE" of each Master Station.

Refer to IX Master Station Operation Manual.



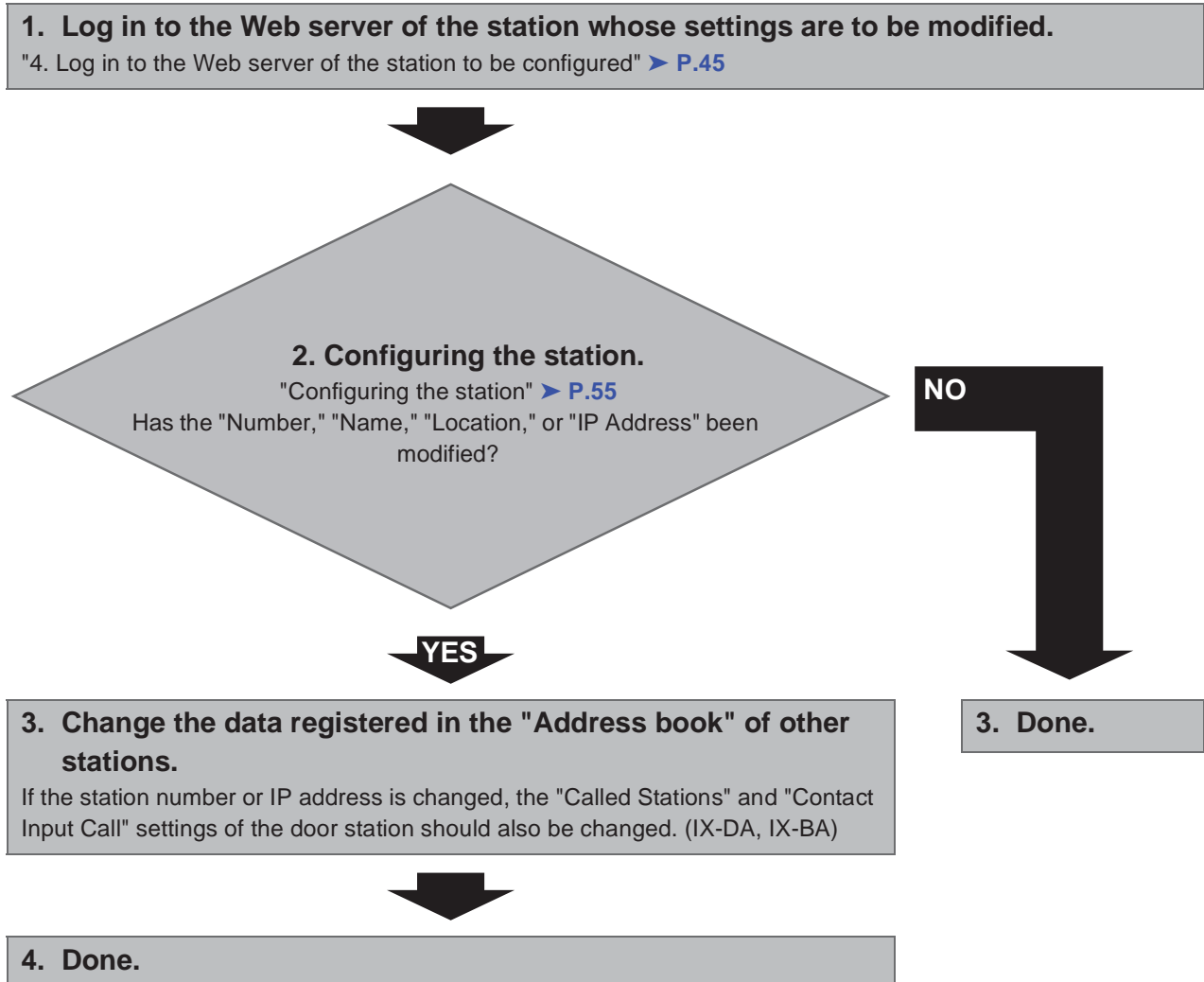
10.Done.

Important

- Due to the architecture of the IX system, DHCP configuration is only recommended for network environments utilizing managed (static) IP address leasing.
- Save the settings after configuring the system.
Refer to "9.3. Settings File Management" ➤ [P.114](#).
If the setting file is lost, station settings will need to be reconfigured.

- **To change the Settings (For IPv4 Address with DHCP)**

Use flowchart to change the Settings.

**Important**

Save the settings after configuring the system.

Refer to "9.3. Settings File Management" > P.114.

If the setting file is lost, station settings will need to be reconfigured.

- **To add a station (For IPv4 Address with DHCP)**

Use flowchart to add a station.

1. Configure the DHCP server to assign a static IP address.



2. Connect PC to the station to be added.

Connect one at a time. "3. Connecting to a PC" > [P.44](#)



3. Log in to the Web server of the station.

"4. Log in to the Web server of the station to be configured" > [P.45](#)



4. Set "IP addressing method" to "IPv4 DHCP."

"■IP addressing method" > [P.61](#)

The station is restarted and the IP address assigned by DHCP server will be assigned.

If a DHCP address cannot assigned, it will default to "192.168.1.160."




5. Log in to the Web server of the station with the assigned IP Address.

"4. Log in to the Web server of the station to be configured" > [P.45](#)



6. Set "1.3. Language" > [P.58](#).

Click  to update the settings.



7. Configuring the station.

"Configuring the station" > [P.55](#)



8. Register the data of the added station to the "Address book," "Called Stations," and "Contact Input Call" of the other stations.



9. Set "LANGUAGE" of the added Master Station.

Refer to IX Master Station Operation Manual.



10.Done.

Important

Save the settings after configuring the system.

Refer to "9.3. Settings File Management" > [P.114](#).

If the setting file is lost, station settings will need to be reconfigured.

● **To delete a station (For IPv4 Address with DHCP)**

Use flowchart delete a station.

1. Delete the station from the "Address book," "Called Stations," and "Contact Input Call" of all other stations.

Caution

If a page is placed without deleting the station from the "Address book," "Called Stations," and "Contact Input Call", the operation may be delayed.



2. Done.

Important

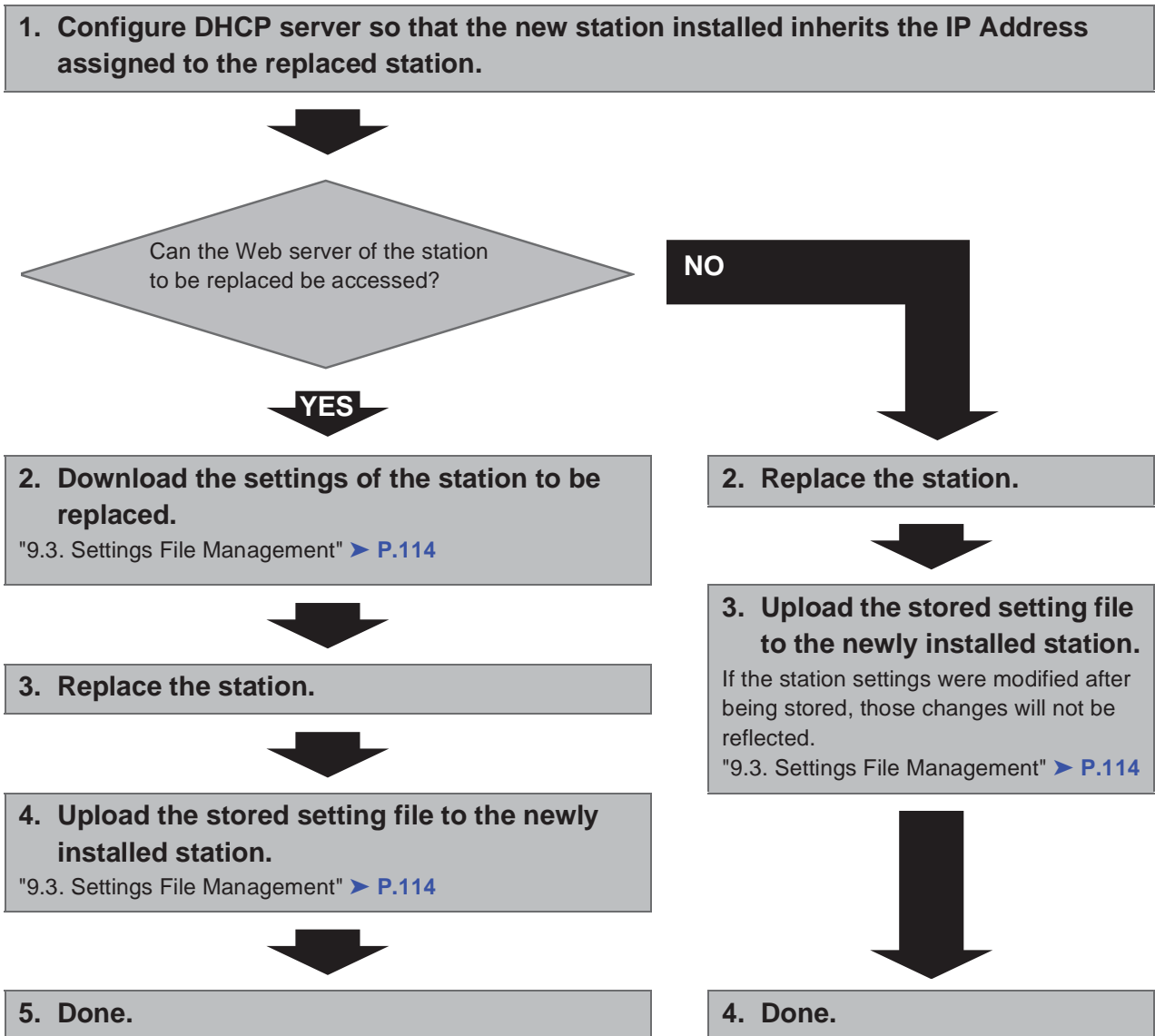
Save the settings after configuring the system.

Refer to "9.3. Settings File Management" ➤ [P.114](#).

If the setting file is lost, station settings will need to be reconfigured.

- **To replace a station (For IPv4 Address with DHCP)**

Use flowchart to replace a station.

**Important**

Save the settings after configuring the system.

Refer to "9.3. Settings File Management" > P.114.

If the setting file is lost, station settings will need to be reconfigured.

■ For Static IPv6 Address

● Create new data

Use flowchart to create new configuration, e.g., when installing a new system.

1. Connect PC to the station to be configured.

The default IP addresses of the stations are identical. Connect one at a time.

"3. Connecting to a PC" ➤ [P.44](#)



2. With default IPv4 Address (192.168.1.160), log in to the Web server of the station to be configured.

"4. Log in to the Web server of the station to be configured" ➤ [P.45](#)



3. Set "IP addressing method" to "Static IPv6" and configure "IPv6 Address."

"2.1. IP Address" ➤ [P.61](#)

The station will be restarted with the assigned IPv6 Address.



4. Configure IPv6 addresses for other stations in the same manner using Steps 1 through 3.




5. Log in to the Web server of each station with IPv6 Address.

"4. Log in to the Web server of the station to be configured" ➤ [P.45](#)



6. Set "1.3. Language" ➤ [P.58](#).

Click  to update the settings.



7. Configuring the station.

"Configuring the station" ➤ [P.55](#)

For Door Station configuration, refer to IX Door Station Web Setting Manual.



8. Set "LANGUAGE" of each Master Station.

Refer to IX Master Station Operation Manual.



9. Done.

Important

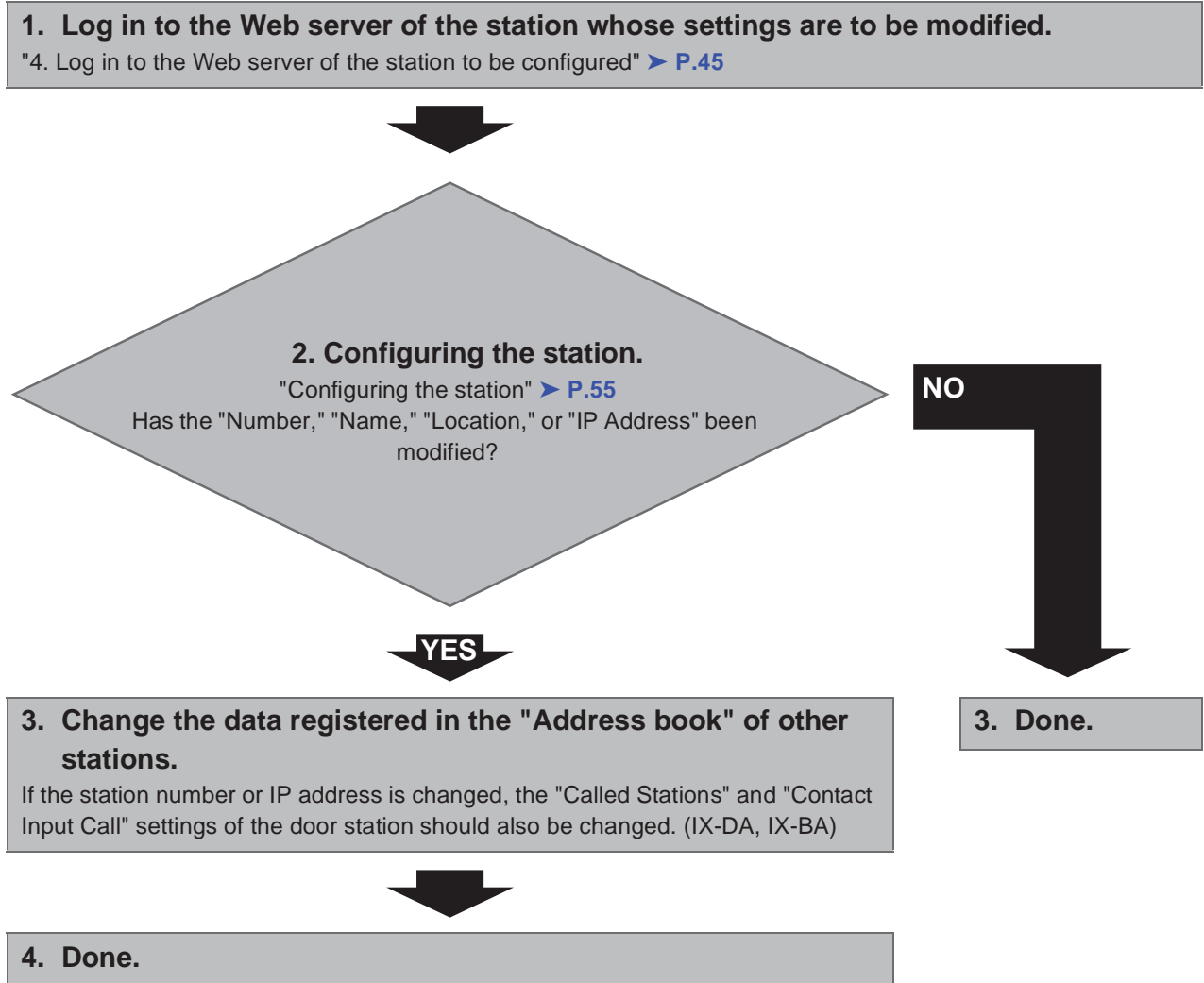
Save the settings after configuring the system.

Refer to "9.3. Settings File Management" ➤ [P.114](#).

If the setting file is lost, station settings will need to be reconfigured.

● **To change the Settings (For Static IPv6 Address)**

Use flowchart to change the Settings.



Important

Save the settings after configuring the system.

Refer to "9.3. Settings File Management" > P.114.

If the setting file is lost, station settings will need to be reconfigured.

- **To add a station (For Static IPv6 Address)**

Use flowchart to add a station.

1. Connect PC to the station to be added.

Connect one at a time. "3. Connecting to a PC" > [P.44](#)



2. With default IPv4 Address (192.168.1.160), log in to the Web server of the station to be added.

"4. Log in to the Web server of the station to be configured" > [P.45](#)



3. Set "IP addressing method" to "Static IPv6" and configure "IPv6 Address."

"2.1. IP Address" > [P.61](#)

The station will be restarted with the assigned IPv6 Address.




4. Log in to the Web server of the added station with IPv6 Address.

"4. Log in to the Web server of the station to be configured" > [P.45](#)



5. Set "1.3. Language" > [P.58](#).

Click  to update the settings.



6. Configuring the station.

"Configuring the station" > [P.55](#)



7. Register the data of the added station to the "Address book," "Called Stations," and "Contact Input Call" of the other stations.



8. Set "LANGUAGE" of the added Master Station.

Refer to IX Master Station Operation Manual.



9. Done.

Important

Save the settings after configuring the system.

Refer to "9.3. Settings File Management" > [P.114](#).

If the setting file is lost, station settings will need to be reconfigured.

● **To delete a station (For Static IPv6 Address)**

Use flowchart to delete a station.

1. Delete the station from the "Address book," "Called stations," and "Contact Input Call" of all other stations.

Caution

If a page is placed without deleting the station from the "Address book," "Called Stations," and "Contact Input Call", the operation may be delayed.



2. Done.

Important

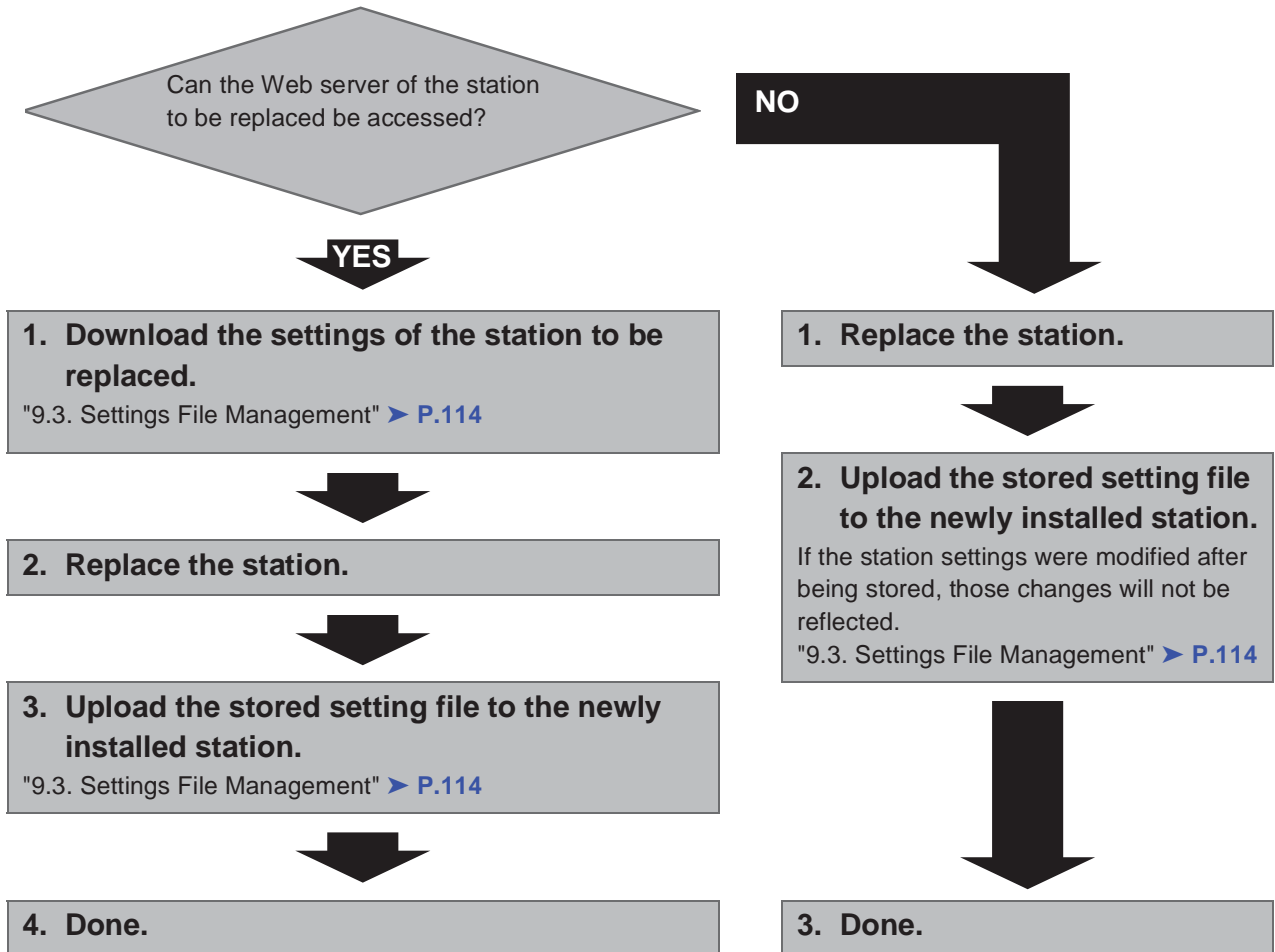
Save the settings after configuring the system.

Refer to "9.3. Settings File Management" ➤ [P.114](#).

If the setting file is lost, station settings will need to be reconfigured.

● **To replace a station (For Static IPv6 Address)**

Use flowchart to replace a station due to a fault.



Important

Save the settings after configuring the system.

Refer to "9.3. Settings File Management" > P.114.

If the setting file is lost, station settings will need to be reconfigured.

■ For stateless IPv6 Address

● Create new data

Use flowchart to create new configuration, e.g., when installing a new system.

Support Tool is needed to configure the system using this flowchart. Install Support Tool, and set for IPv6. For set up information, refer to IX Support Tool Setting Manual.

1. Install a device (e.g., router) which can transmit RA (supports the stateless IPv6 setting).

Do not change the device so that it cannot transmit Router Advertisement (RA).
For how to set up, refer to the manual of the device.



2. Connect PC to the station to be configured.

The default IP addresses of the stations are identical. Connect one at a time.
"3. Connecting to a PC" > [P.44](#)



3. With default IPv4 Address (192.168.1.160), log in to the Web server of the station to be configured.

"4. Log in to the Web server of the station to be configured" > [P.45](#)



4. Set "IP addressing method" to "IPv6 Stateless."

"■IP addressing method" > [P.61](#)

The station is restarted and IPv6 Address is automatically configured.
If IP Address fails to be automatically configured, it will become "FDC2::7000." If this happens, cycle power to the station, and then the IP Address will be automatically reconfigured.



5. Configure other stations to be "IPv6 Stateless" in the same manner using Steps 2 through 4.



6. Search each station with Support Tool for its IPv6 Address.




7. Log in to the Web server of each station with the IPv6 addresses identified.

"4. Log in to the Web server of the station to be configured" > [P.45](#)



8. Set "1.3. Language" > [P.58](#).

Click  to update the settings.



9. Configuring the station.

"Configuring the station" > [P.55](#)

For Door Station configuration, refer to IX Door Station Web Setting Manual.



10. Set "LANGUAGE" of each Master Station.

Refer to IX Master Station Operation Manual.



11. Done.

Important

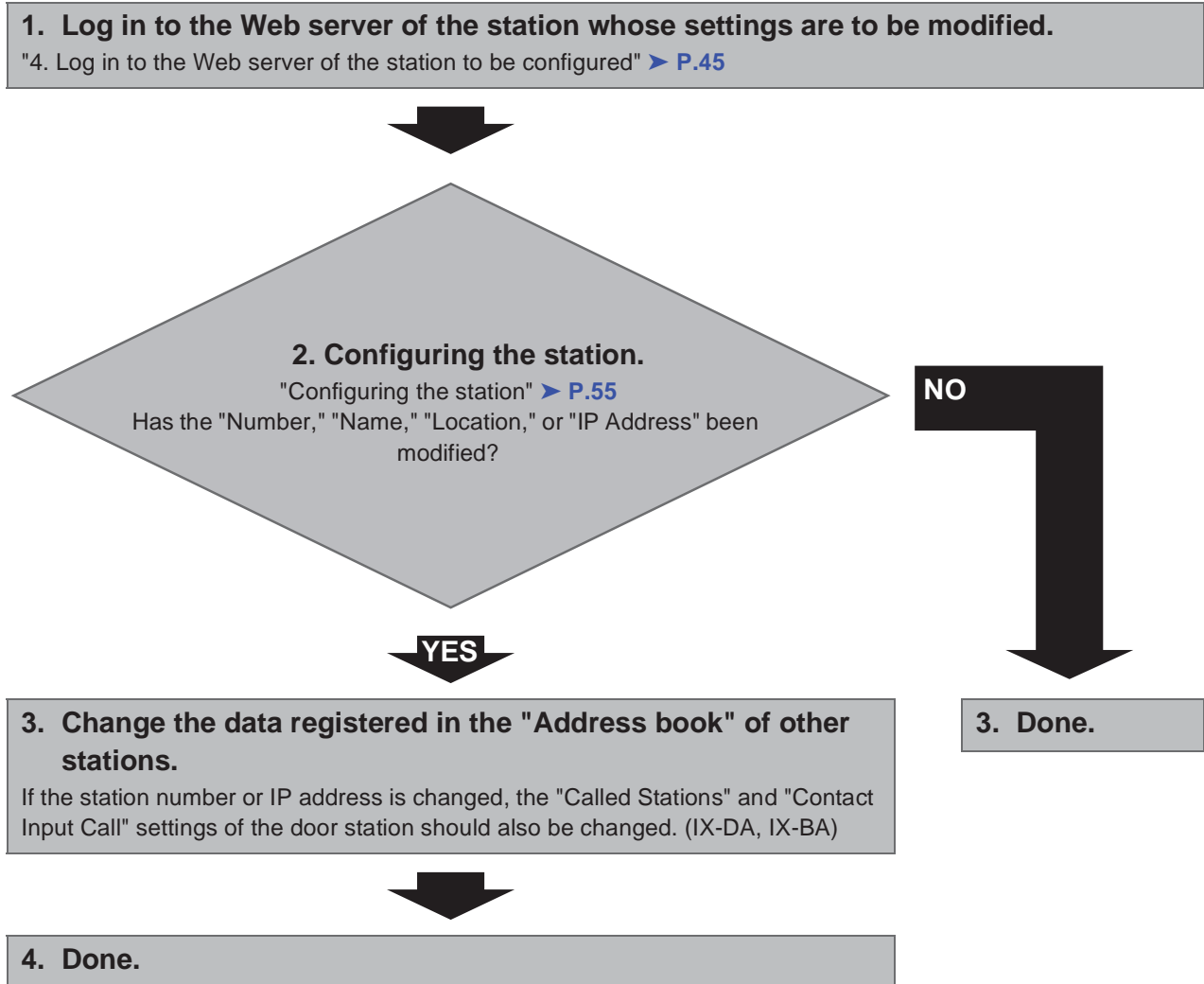
Save the settings after configuring the system.

Refer to "9.3. Settings File Management" ➤ [P.114](#).

If the setting file is lost, station settings will need to be reconfigured.

● **To change the settings (For stateless IPv6 Address)**

Use flowchart to change the Settings.



Important

Save the settings after configuring the system.

Refer to "9.3. Settings File Management" > P.114.

If the setting file is lost, station settings will need to be reconfigured.

- **To add a station (For stateless IPv6 Address)**

Use flowchart to add a station.

Support Tool is needed to configure the system using this flowchart. Install Support Tool, and set for IPv6. For set up information, refer to IX Support Tool Setting Manual.

1. Connect your PC to the station you want to add.

Connect one at a time. "3. Connecting to a PC" > [P.44](#)



2. With default IPv4 Address (192.168.1.160), log in to the Web server of the station to be added.

"4. Log in to the Web server of the station to be configured" > [P.45](#)



3. Set "IP addressing method" to "IPv6 Stateless."

"■IP addressing method" > [P.61](#)

The station is restarted and IPv6 Address is automatically configured.

If IP Address fails to be automatically configured, it will become "FDC2::7000." If this happens, cycle power to the station, and then the IP Address will be automatically reconfigured.



4. Search each station to be added with Support Tool for its IPv6 Address.




5. Log in to the Web server of the station with the IPv6 Address that have been identified.

"4. Log in to the Web server of the station to be configured" > [P.45](#)



6. Set "1.3. Language" > [P.58](#).

Click  to update the settings.



7. Configuring the station.

"Configuring the station" > [P.55](#)



8. Register the data of the added station to the "Address book," "Called Stations," and "Contact Input Call" of all the stations.



9. Set "LANGUAGE" of the added Master Station.

Refer to IX Master Station Operation Manual.



10.Done.

Important

Save the settings after configuring the system.

Refer to "9.3. Settings File Management" ➤ [P.114](#).

If the setting file is lost, station settings will need to be reconfigured.

- **To delete a station (For stateless IPv6 Address)**

Use flowchart to delete a station.

1. Delete the station from the "Address book," "Called Stations," and "Contact Input Call" of all other stations.

Caution

If a page is placed without deleting the station from the "Address book," "Called Stations," and "Contact Input Call", the operation may be delayed.



2. Done.

Important

Save the settings after configuring the system.

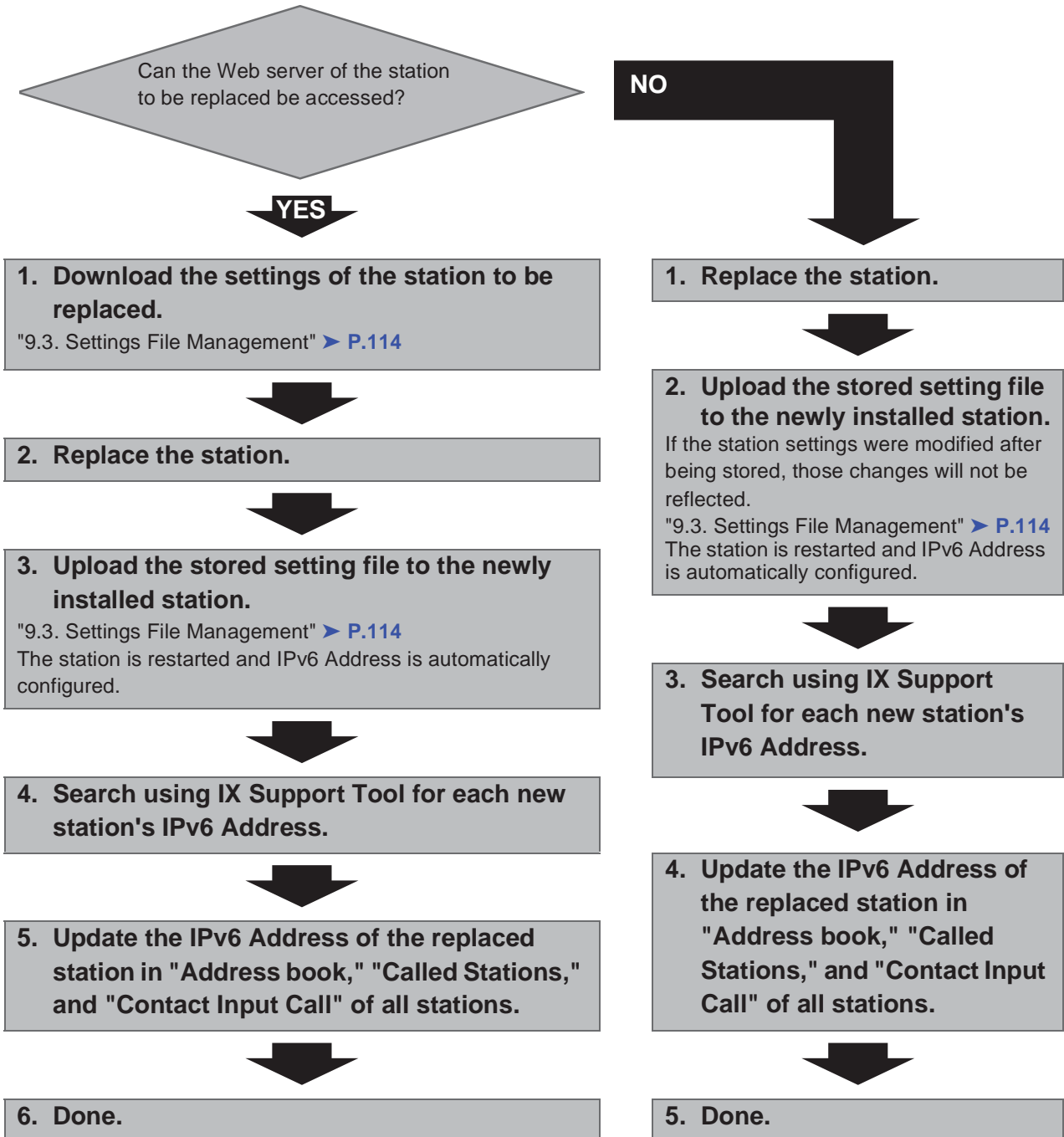
Refer to "9.3. Settings File Management" ➤ [P.114](#).

If the setting file is lost, station settings will need to be reconfigured.

● To replace a station (For stateless IPv6 Address)

Use flowchart to replace a station.

Support Tool is needed to configure the system using this flowchart. Install Support Tool, and set for IPv6. For set up information, refer to IX Support Tool Setting Manual.

**Important**

Save the settings after configuring the system.

Refer to "9.3. Settings File Management" > P.114.

If the setting file is lost, station settings will need to be reconfigured.

■ For IPv6 Address with DHCP

● Create new data

Use flowchart to create new configuration, e.g., when installing a new system.

1. Verify managed DHCP environment exists and that each station has been assigned a static IP address.

DUID of the station is "00030001 + MAC address."



2. Connect PC to the station to be configured.

Since the default IP addresses of the stations are all identical, connect one at a time.

"3. Connecting to a PC" > [P.44](#)



3. With default IPv4 Address (192.168.1.160), log in to the Web server of the station to be configured.

"4. Log in to the Web server of the station to be configured" > [P.45](#)



4. Set "IP addressing method" to "IPv6 DHCPv6."

"■ IP addressing method" > [P.61](#)

The station is restarted and the IPv6 Address assigned by DHCP server beforehand will be assigned.

If a DHCP address cannot be assigned, it will default to "FDC2::7000."



5. Configure other stations to be "IPv6 DHCPv6" in the same manner using Steps 2 through 4.




6. Log in to the Web server of the station with the assigned IPv6 Address.

"4. Log in to the Web server of the station to be configured" > [P.45](#)



7. Set "1.3. Language" > [P.58](#).

Click  to update the settings.



8. Configuring the station.

"Configuring the station" > [P.55](#)

For Door Station configuration, refer to IX Door Station Web Setting Manual.



9. Set "LANGUAGE" of each Master Station.

Refer to IX Master Station Operation Manual.



10. Done.

Important

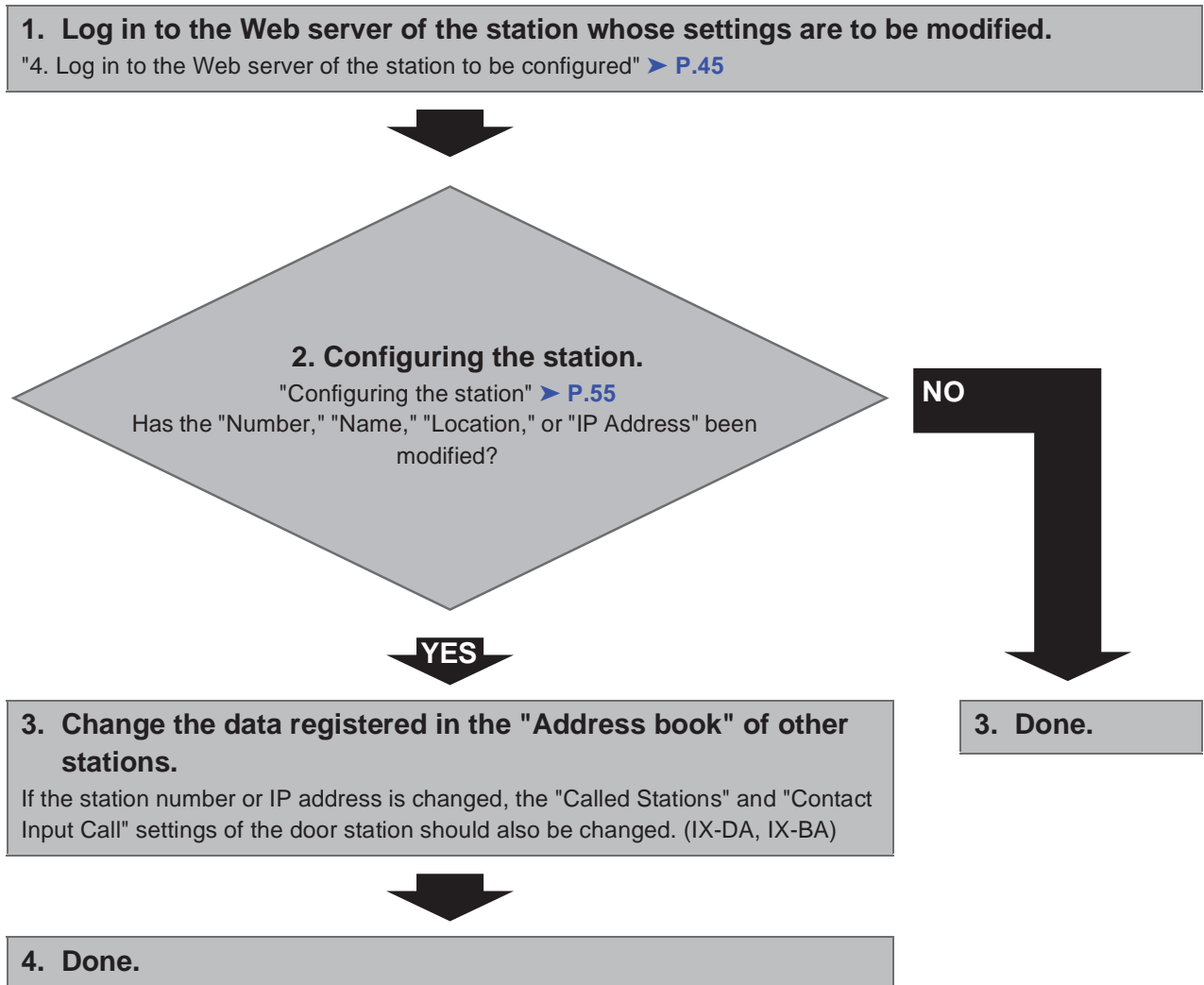
Save the settings after configuring the system.

Refer to "9.3. Settings File Management" ➤ [P.114](#).

If the setting file is lost, station settings will need to be reconfigured.

● **To change the settings (For IPv6 Address with DHCP)**

Use flowchart to change the Settings.



Important

Save the settings after configuring the system.

Refer to "9.3. Settings File Management" > P.114.

If the setting file is lost, station settings will need to be reconfigured.

- **To add a station (For IPv6 Address with DHCP)**

Use flowchart to add a station.

1. Configure the DHCP server to assign a static IP address.

DUID of the station is "00030001 + MAC address."



2. Connect PC to the station to be added.

Connect one at a time. "3. Connecting to a PC" > [P.44](#)



3. With default IPv4 Address (192.168.1.160), log in to the Web server of the station to be added.

"4. Log in to the Web server of the station to be configured" > [P.45](#)



4. Set "IP addressing method" to "IPv6 DHCPv6."

"■IP addressing method" > [P.61](#)

The station is restarted and the IPv6 Address assigned by DHCP server beforehand will be assigned.
If a DHCP address cannot be assigned, it will default to "FDC2::7000."




5. Log in to the Web server of the station with the assigned IPv6 Address.

"4. Log in to the Web server of the station to be configured" > [P.45](#)



6. Set "1.3. Language" > [P.58](#).

Click  to update the settings.



7. Configuring the station.

"Configuring the station" > [P.55](#)



8. Register the data of the added station to the "Address book," "Called Stations," and "Contact Input Call" of all the stations.



9. Set "LANGUAGE" of the added Master Station.

Refer to IX Master Station Operation Manual.



10.Done.

Important

- Due to the architecture of the IX system, DHCP configuration is only recommended for network environments utilizing managed (static) IP address leasing.
- Save the settings after configuring the system.
Refer to "9.3. Settings File Management" ➤ [P.114](#).
If the setting file is lost, station settings will need to be reconfigured.

● **To delete a station (For IPv6 Address with DHCP)**

Use flowchart to delete a station.

1. Delete the station from the "Address book," "Called Stations," and "Contact Input Call" of all other stations.

Caution

If a page is placed without deleting the station from the "Address book," "Called Stations," and "Contact Input Call", the operation may be delayed.



2. Done.

Important

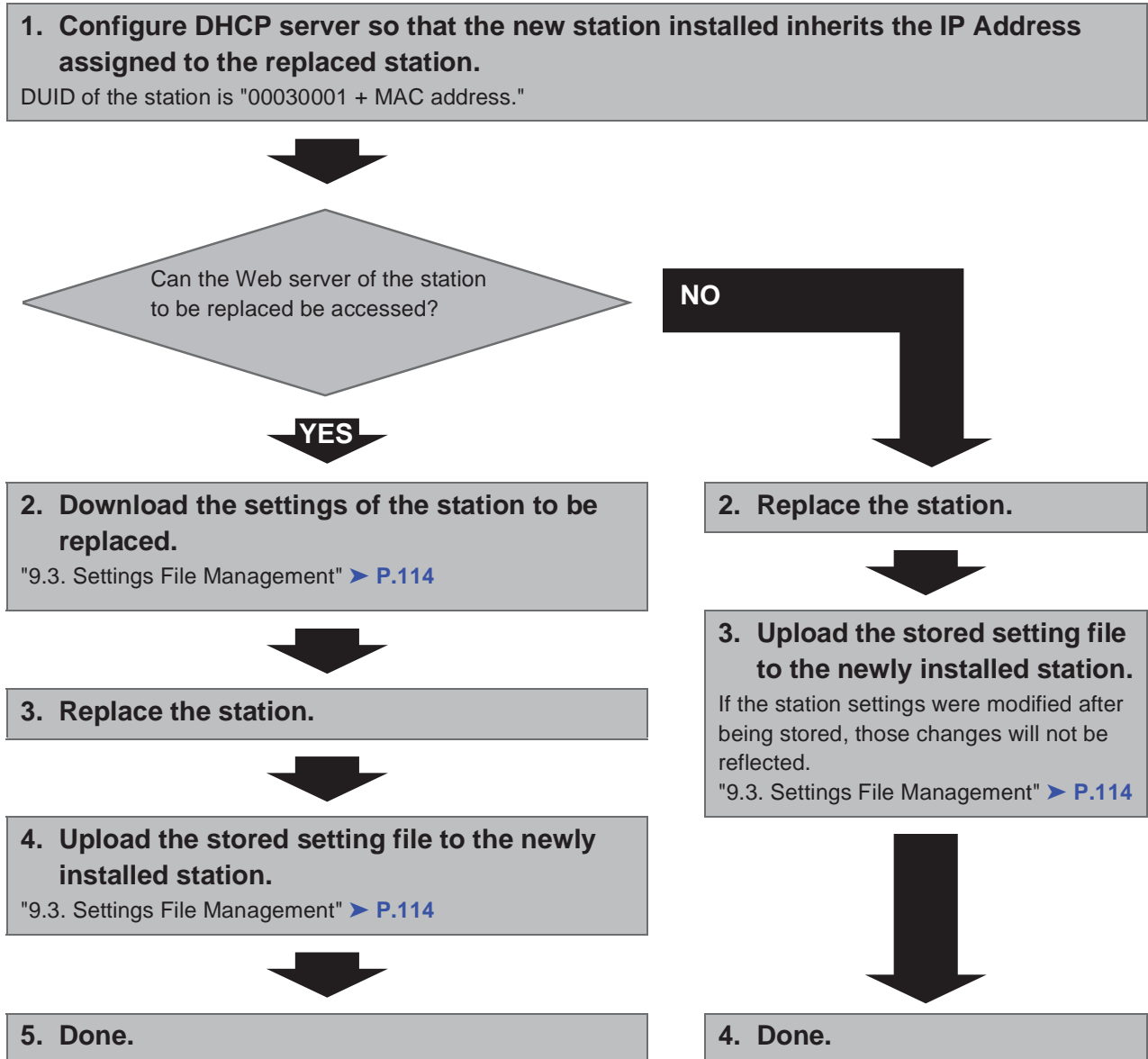
Save the settings after configuring the system.

Refer to "9.3. Settings File Management" ➤ [P.114](#).

If the setting file is lost, station settings will need to be reconfigured.

● **To replace a station (For IPv6 Address with DHCP)**

Use flowchart to replace a station.



Important

Save the settings after configuring the system.

Refer to "9.3. Settings File Management" > P.114.

If the setting file is lost, station settings will need to be reconfigured.

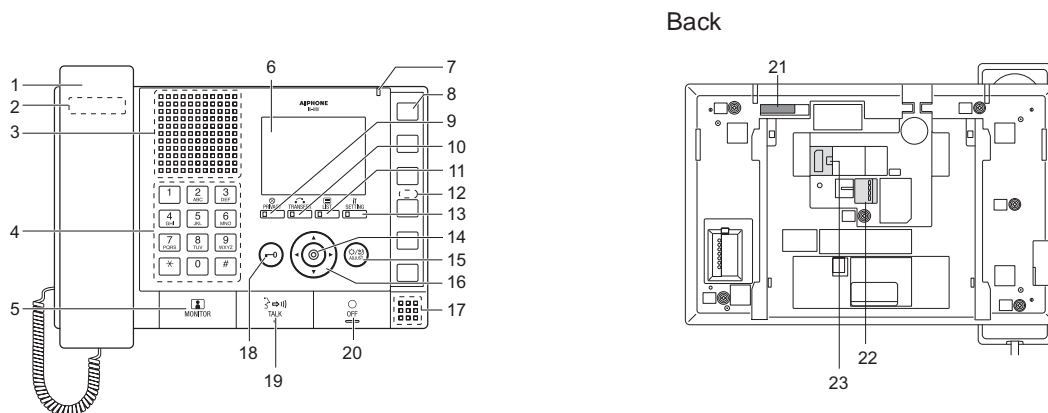
Startup and Configuration

1. System requirements

Programming PC requirements.

Network	Ethernet (10 BASE-T, 100 BASE-TX)
Web browser	Internet Explorer 7.0, 8.0, or 9.0 (SSL 3.0 or TLS 1.0 or later)

2. Part names



1	Handset	13	SETTING button / Setting indicator (blue)
2	Hook switch	14	Select button
3	Speaker	15	ADJUST button
4	Keypad	16	Up/Down and L/R buttons
5	MONITOR button	17	Microphone
6	Color LCD monitor	18	Door Release button
7	Status indicator (orange/blue)	19	TALK button / Talk indicator (blue)
8	Speed Dial buttons (x 6)	20	OFF button
9	PRIVACY button / Privacy indicator (blue)	21	MAC address
10	TRANSFER button / Transfer indicator (orange)	22	Low voltage cable connections
11	LIST button / List indicator (blue)	23	CAT5e/6 cable connections
12	RESET button (beneath the name plate)*		

* Press and hold the reset button for longer than 1 second, then release to restart station.

■ Indicators

☀: On; □: Off

Name	Status (pattern)	Description
Status indicator	Orange flashing	Normal flashing ☀ 0.75 sec → □ 0.75 sec
		Fast flashing ☀ 0.25 sec → □ 0.25 sec
		Long interval flashing ☀ 0.5 sec → □ 4 sec
		Long irregular flashing ☀ 1 sec → □ 0.25 sec → ☀ 0.25 sec → □ 0.25 sec → ☀ 0.25 sec → □ 0.25 sec
		Short irregular flashing ☀ 1 sec → □ 0.25 sec → ☀ 0.25 sec → □ 0.25 sec
	Blue light	☀
		During communication, Standby (Depends on setting)

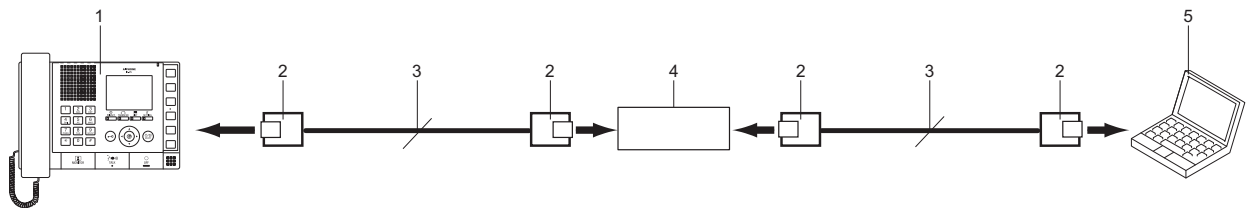
Point

For a status other than those noted here, refer to IX Master Station Operation Manual.

3. Connecting to a PC

Connect the station with a PC using PoE compatible switch.

- Use CAT5e/6 straight cable to connect the devices through LAN port.
- The station will be started with the default IP address of 192.168.1.160 and Subnet mask of 255.255.255.0. Change the PC IP address as necessary.



1	Master Station	4	PoE compatible switch
2	RJ45	5	PC
3	CAT5e/6 straight cable		

4. Log in to the Web server of the station to be configured

- 1) Apply power to the station.
 - Power is supplied by a PoE compatible switch.
 - In some cases, it may take a few minutes for the station to start up.
 - The status indicator will light up blue once the station has started. (This may not come on depending on the settings)
- 2) Start the PC and open the browser (Internet Explorer).
- 3) Enter the address below in the address bar of the browser to show the language selection window.

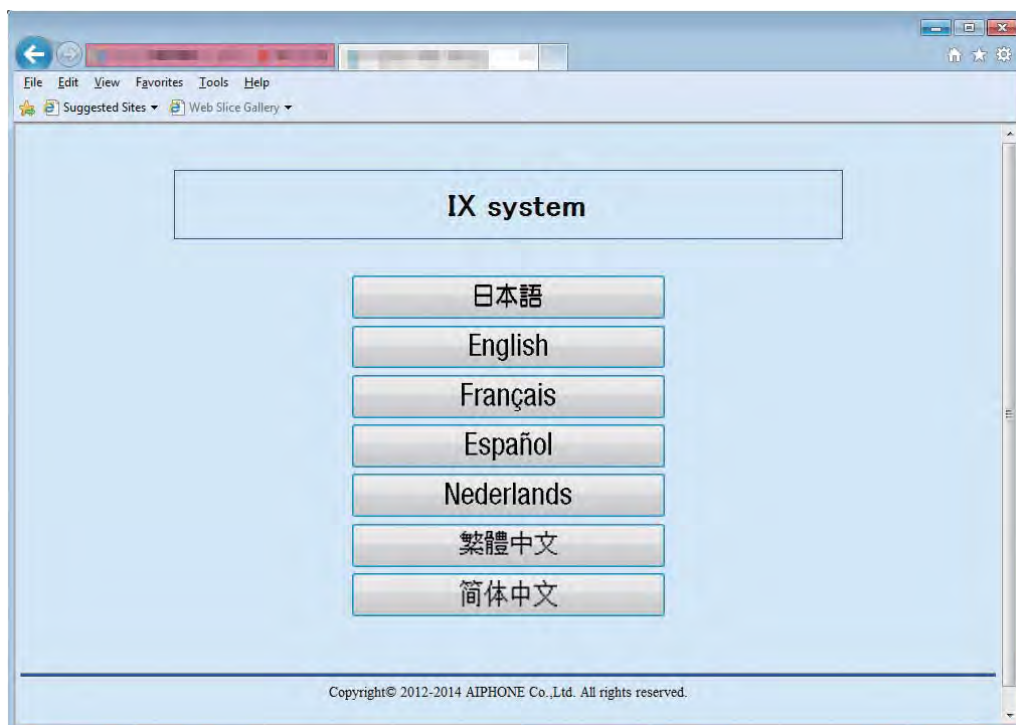
`https://(IP address)/webset.cgi?login`

- Enter the IP Address of the station to be configured.
- When using IPv6, use brackets ([]) around the address.
- The default IP Address is 192.168.1.160, and Subnet mask is 255.255.255.0.

Point

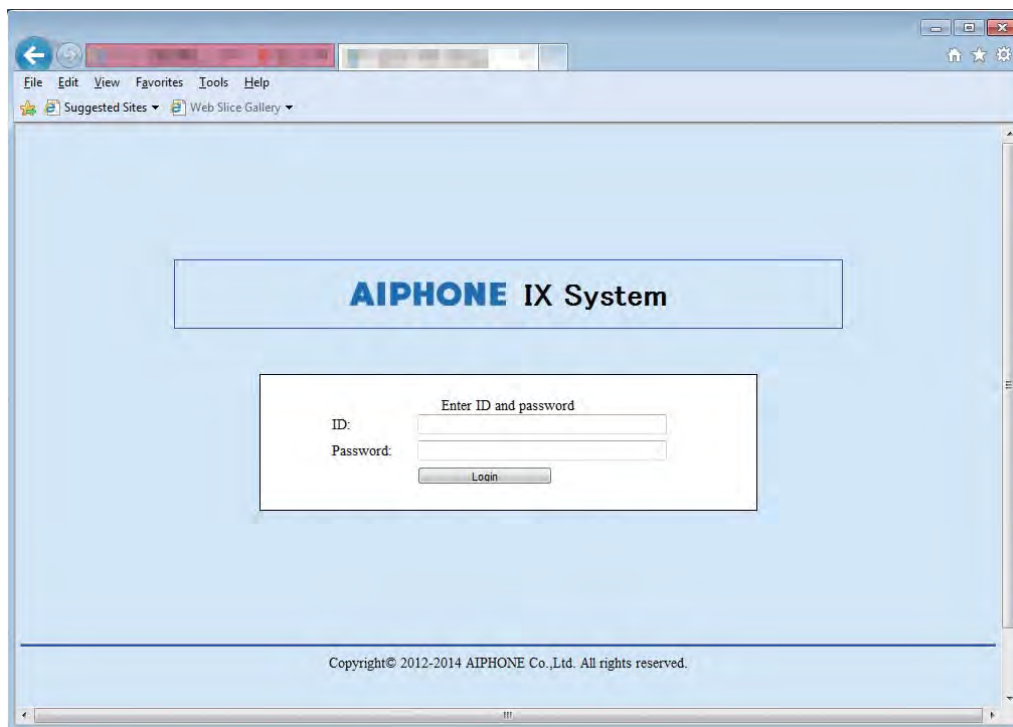
If a station cannot be accessed, press and hold the reset button until the status indicator flashes orange. The IP address, subnet mask, Administrator ID, Administrator Password, User ID, and User Password will return to default. Access the device within one minute of resetting.

- 4) Select the language, login window of the selected language will be shown.
 - Language for displaying contents on the Web settings is changed. Language for the display on the Master Station is not changed.

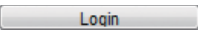


Startup and Configuration

5) Enter ID and Password to log in the Web browser.



Types of accounts	Default values
Administrator account	ID: admin Password: admin
General user account	ID: user Password: user

6) Click  to show the setting window.

Point

- Do not log in to multiple devices simultaneously on the same PC.
- When a security warning is received, press "Allow."

5. Settings window

When logging into the web server of the station, the following setting window will be seen. This window will be used to configure the station.

- Depending the PC and OS used, the window may be slightly different.
- After configuring the station, confirm its operation by referring to IX Master Station Operation Manual.

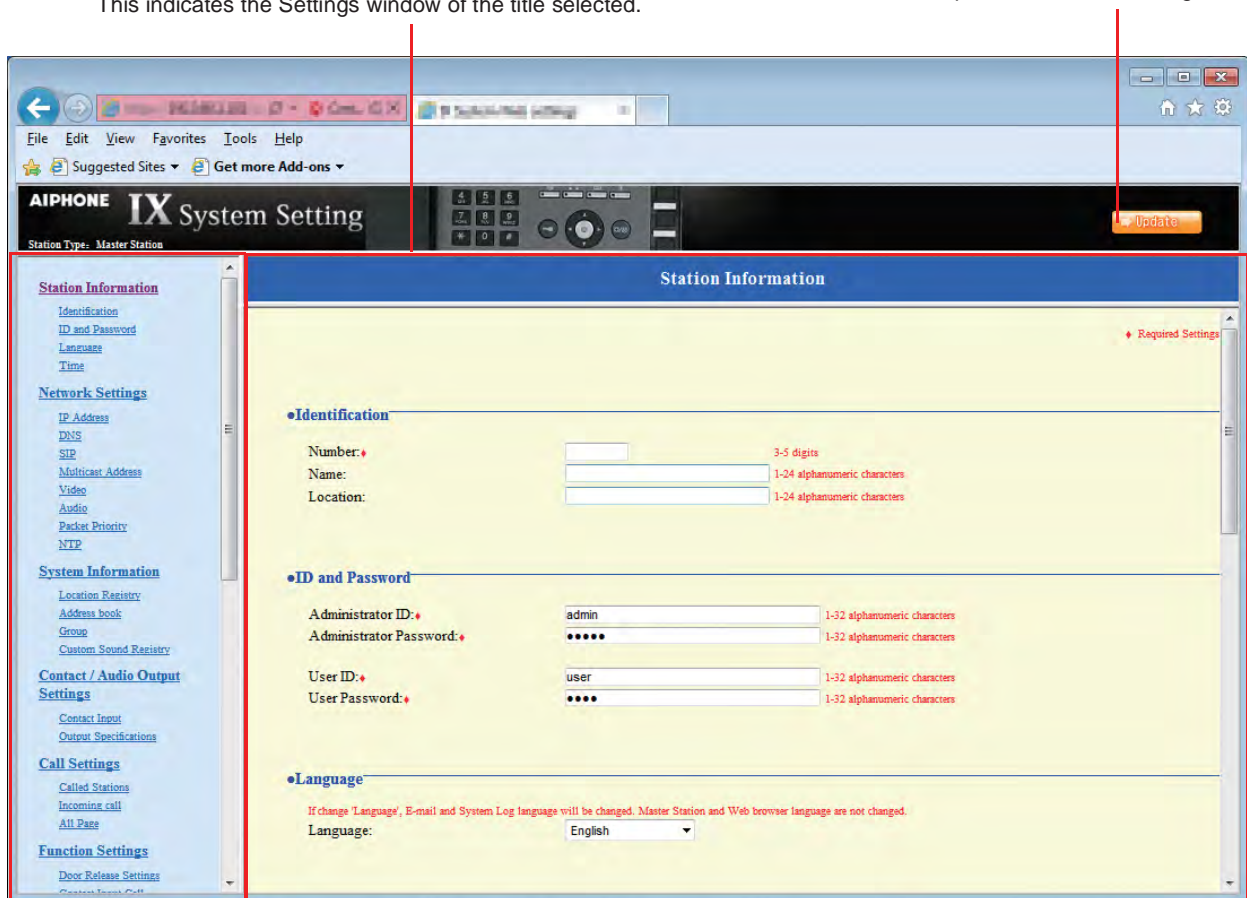
■ Settings window sample

Settings window:

This indicates the Settings window of the title selected.

Update button:

Click this button to update the station settings.



The screenshot shows a web browser window displaying the 'AIPHONE IX System Setting' interface. The browser's address bar shows the URL 'http://192.168.1.100/setting/'. The main content area is titled 'Station Information' and contains several sections for configuration:


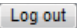
- Identification:** Fields for Number (3-5 digits), Name (1-24 alphanumeric characters), and Location (1-24 alphanumeric characters).
- ID and Password:** Fields for Administrator ID (1-32 alphanumeric characters), Administrator Password (1-32 alphanumeric characters), User ID (1-32 alphanumeric characters), and User Password (1-32 alphanumeric characters).
- Language:** A dropdown menu set to 'English'. A note below states: 'If change Language, E-mail and System Log language will be changed. Master Station and Web browser language are not changed.'

A left sidebar contains a 'Setting menu' with various categories and sub-items, such as 'Station Information', 'Network Settings', 'System Information', 'Contact / Audio Output', 'Call Settings', and 'Function Settings'. An 'Update' button is located in the top right corner of the main content area.

Setting menu:

Shows all items that can be configured. Click the title to be configured and appropriate setting window will display.


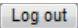

5.1. How to configure

- 1) Click the title to configure.
The Settings window for that particular title will be shown.
- 2) Configure each entry in this window.
- 3) When done making changes, click  to update the settings.
When the Settings are updated, "Setting Updated." will be shown at the top left corner in the window. If the update fails, an error message will be shown.
If the settings do not need to be updated, click another title in the Setting menu.
- 4) Repeat steps 1 through 3 for other titles.
* To log out of the Web server of the station, click  in the Setting menu.

Important

Depending on the language for the display on the Master Station, the content of the settings item may appear incorrectly.

Point

- To end the setting session, do not use . Use  to end.
- The settings will not update if another title is selected without clicking .
- When no activity is detected for one hour, the connection will be automatically terminated.

6. System settings list

The table below shows all the settings for the system.

The symbols indicate the following:

- ♦: Indicates a required field. A value should be entered. Retain the default settings, unless a change is necessary.
- ♣: Indicates that Support Tool has uploaded the data. If the entry is altered through a browser, Support Tool will not recognize the change.

Point

- The following list shows the overview of the Web settings. The contents, how they are displayed, and the order of entries may vary from the actual screens.
- Download the Settings data and store it at a safe location ➤ [P.114](#). Otherwise, it may become impossible to restore the settings after fixing a failure.
- The abbreviations for the access levels are:
A: administrator and U: users.
A check mark indicates that the entry can be modified with that level of privilege.

Setting Table					
Category	Subcategory	Entry	Access Level		Reference Page
			A	U	
Station Information					
Identification	-	Number ♠♣	✓		➤ P.56
		Name ♣	✓		➤ P.56
		Location ♣	✓		➤ P.56
ID and Password	-	Administrator ID ♠♣	✓		➤ P.57
		Administrator Password ♠♣	✓		➤ P.57
		User ID ♦	✓	✓	➤ P.57
		User Password ♦	✓	✓	➤ P.57
Language	-	Language	✓	✓	➤ P.58
Time	Time Zone	Select time zone	✓	✓	➤ P.59
	Daylight Savings Time	Enable automatic daylight savings time	✓	✓	➤ P.59
	NTP	Enable NTP	✓	✓	➤ P.59
	Date and Time	Time	✓	✓	➤ P.60

Setting Table					
Category	Subcategory	Entry	Access Level		Reference Page
			A	U	
Network Settings					
IP Address	-	IP addressing method	✓		➤ P.61
	IPv4 Address	IP Address ♦♣	✓		➤ P.63
		Subnet Mask ♦	✓		➤ P.63
		Default Gateway	✓		➤ P.63
	IPv6 Address	IP Address ♦♣	✓		➤ P.64
		Default Gateway	✓		➤ P.64
DNS	-	Primary Server	✓		➤ P.65
		Secondary Server	✓		➤ P.65
SIP	Connection	SIP Signaling Port ♦	✓		➤ P.66
	Miscellaneous	Call health check timer [sec] ♦	✓		➤ P.66
Multicast Address	-	For Paging	✓		➤ P.66
Video	Video Encoder 1	RTP Start Port ♦	✓		➤ P.67
		RTP End Port ♦	✓		➤ P.67
	Video Encoder 2	RTP Start Port ♦	✓		➤ P.67
		RTP End Port ♦	✓		➤ P.67
Audio	-	Audio CODEC	✓		➤ P.68
		Audio RTP Transmission Interval [msec]	✓		➤ P.68
		RTP Idle Detection Time [sec] ♦	✓		➤ P.68
		Audio 1 RTP Start Port ♦	✓		➤ P.68
		Audio 1 RTP End Port ♦	✓		➤ P.69
		Audio 2 RTP Start Port ♦	✓		➤ P.69
		Audio 2 RTP End Port ♦	✓		➤ P.69
	Audio Buffer	Packets Buffered at Audio Start	✓		➤ P.69
		Maximum Packets Buffered	✓		➤ P.69

Startup and Configuration

Setting Table					
Category	Subcategory	Entry	Access Level		Reference Page
			A	U	
Packet Priority	-	TOS Value (Audio)	✓		➤ P.70
		TOS Value (SIP)	✓		➤ P.70
		VLAN Setting	✓		➤ P.70
		VLAN ID ♦	✓		➤ P.70
		VLAN Priority	✓		➤ P.70
NTP	Primary Server	Address	✓		➤ P.71
		Port	✓		➤ P.71
	Secondary Server	Address	✓		➤ P.72
		Port	✓		➤ P.72
	-	Synchronization Interval [hour] ♦	✓		➤ P.72
System Information					
Location Registry	-	Location Name ♣	✓		➤ P.73
Address book ♣	Station List ♣	-	✓		➤ P.75
	Network Camera List ♣	-	✓		➤ P.77
Group ♣	Group List	-	✓		➤ P.79
Custom Sound Registry	-	-	✓	✓	➤ P.81
Contact / Audio Output Settings					
Contact Input	Contact Input Specifications	Type	✓		➤ P.83
		Detection time [msec] ♦	✓		➤ P.83
		Usage	✓		➤ P.83
Output Specifications	Relay Output Specifications	Output Time [msec / sec] ♦	✓		➤ P.84
		Usage	✓		➤ P.84

Startup and Configuration

Setting Table					
Category	Subcategory	Entry	Access Level		Reference Page
			A	U	
Call Settings					
Called Stations	Call Destination Settings	You do not have to set up Called Stations. You can call a station registered in the "Address book."	✓	✓	➤ P.85
Incoming call	Call Answer Settings	Auto Answer	✓	✓	➤ P.85
		Ringtone Count [time(s)]	✓	✓	➤ P.85
	Ringtone Settings (Normal Call)	Ringtone	✓	✓	➤ P.86
All Page	-	-	✓		➤ P.87
Function Settings					
Door Release Settings	Door Release Authorization	Authentication Key	✓	✓	➤ P.88
	Door Release Output Assignment	Contact Assignment	✓	✓	➤ P.89
		Authentication Key	✓	✓	➤ P.89
	Door Release Output Settings (same as Contact / Audio Output Settings)	Output Time [msec / sec] ♦	✓		➤ P.90
		Usage	✓		➤ P.90
Contact Input Call	Call Acknowledged Settings	Call Timeout [sec] ♦	✓	✓	➤ P.91
	Master Station Call Group Assignment	Group Number	✓	✓	➤ P.91
		Priority	✓	✓	➤ P.91
	Ringtone Settings (Option Input)	Ringtone	✓	✓	➤ P.92
Paging Settings	Paging Pretone Setting	Pretone	✓	✓	➤ P.93
	Paging Time Setting	Paging Timeout [sec] ♦	✓	✓	➤ P.93
Network Camera Integration	Network Camera Profile	Profile ♣	✓		➤ P.93
	Event Registry	Event	✓		➤ P.94
		Network Camera Event Tone	✓	✓	➤ P.95
		Event Tone Count [time(s)]	✓	✓	➤ P.95

Startup and Configuration

Setting Table					
Category	Subcategory	Entry	Access Level		Reference Page
			A	U	
E-mail Settings	Server Settings	SMTP Server	✓		➤ P.96
		SMTP Port ♦	✓		➤ P.96
		SMTP Encryption	✓		➤ P.96
	Authentication Settings	SMTP Authentication	✓		➤ P.97
		Mode	✓		➤ P.97
		ID	✓		➤ P.97
		Password	✓		➤ P.97
	E-mail Addresses	Destination 1	✓	✓	➤ P.98
		Destination 2	✓	✓	➤ P.98
		Destination 3	✓	✓	➤ P.98
		Source Address	✓		➤ P.98
	E-mail Event Trigger	-	✓	✓	➤ P.99
CGI Integration	-	CGI Functionality	✓		➤ P.102
SIF Integration	-	SIF Functionality	✓		➤ P.103
	SIF Communication Settings (sif.ini)	-	✓		➤ P.103
	SIF Parameter Settings (sif_conf.ini)	-	✓		➤ P.103
Transfer Settings					
Absent Transfer Settings	-	Absent Transfer	✓	✓	➤ P.104
		Transfer to Station Number	✓	✓	➤ P.104
Delay Transfer Settings	-	Delay Transfer	✓	✓	➤ P.105
		Delay Time [sec] ♦	✓	✓	➤ P.105
		Transfer to Station Number	✓	✓	➤ P.105
Transfer Schedule Settings	-	Transfer Schedule	✓	✓	➤ P.106
		Transfer to Station Number	✓	✓	➤ P.106
	Weekly Schedule	-	✓	✓	➤ P.107

Startup and Configuration

Setting Table					
Category	Subcategory	Entry	Access Level		Reference Page
			A	U	
Station Hardware Settings					
Speed Dial Button Settings	Destination Assignment	-	✓	✓	➤ P.108
Privacy Setting	-	Privacy	✓	✓	➤ P.109
Volume Settings	Volume Settings	Handset Transmit Volume	✓	✓	➤ P.109
		Handset Receive Volume	✓	✓	➤ P.109
		Hands-free Transmit Volume	✓	✓	➤ P.110
		Hands-free Receive Volume	✓	✓	➤ P.110
		Ringtone Volume	✓	✓	➤ P.110
		Button Feedback Tone	✓	✓	➤ P.110
Communication Settings	-	Talk Timeout [sec] ♦	✓	✓	➤ P.110
		Force Push-to-talk	✓	✓	➤ P.110
Monitor Setting	-	Monitor Timeout [sec] ♦	✓	✓	➤ P.111
Master Station Display Settings	-	Brightness	✓	✓	➤ P.111
		Time Format	✓	✓	➤ P.111
		Standby LED State	✓	✓	➤ P.111
Maintenance					
Firmware Update	-	-	✓		➤ P.112
Initialization	-	-	✓		➤ P.113
Settings File Management	-	-	✓		➤ P.114
System Log	-	-	✓		➤ P.116

Configuring the station

Important

The symbols indicate the following:

- ◆: Indicates a required field. A value should be entered. Retain the default settings, unless a change is necessary.
- ♣: Indicates that Support Tool has uploaded the data. If the entry is altered through a browser, Support Tool will not recognize the change.

1. Station Information

1.1. Identification

Identification

Number: ♦

3-5 digits

Name:

1-24 alphanumeric characters

Location:

1-24 alphanumeric characters

■ Number ♦♣

Description	Enter the station number. Give each station a unique number. The station number set up will be shown to the recipient when a call is originated or when the station is paged.
Settings	3-5 digits
Default values	-

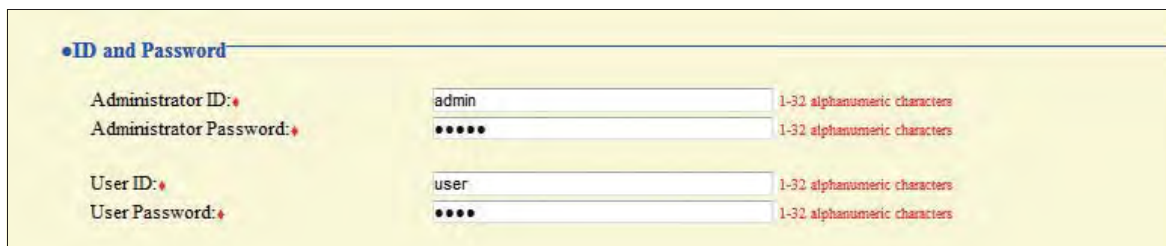
■ Name ♣

Description	Enter the station name. The station name set up will be shown to the recipient when a call is originated or when the station is paged.
Settings	1-24 alphanumeric characters
Default values	-

■ Location ♣

Description	Enter the location where the station is installed. The location set up will be shown to the recipient when a call is originated or when the station is paged.
Settings	1-24 alphanumeric characters
Default values	-

1.2. ID and Password



■ Administrator ID ♦♣

Description	Set the ID of the administrator account for accessing via a Web browser to configure a station.
Settings	1-32 alphanumeric characters
Default values	admin

■ Administrator Password ♦♣

Description	Set the password of the administrator account for accessing via a Web browser to configure a station.
Settings	1-32 alphanumeric characters
Default values	admin

■ User ID ♦

Description	Set the ID of a user account for accessing via a Web browser to configure a station.
Settings	1-32 alphanumeric characters
Default values	user

■ User Password ♦

Description	Set the password of a user account for accessing via a Web browser to configure a station.
Settings	1-32 alphanumeric characters
Default values	user

Point

- "■Administrator ID" and "■User ID" cannot be identical.
- "■Administrator Password" and "■User password" are displayed as "●●●●" on the screen.

1.3. Language

•Language

If change 'Language', E-mail and System Log language will be changed. Master Station and Web browser language are not changed.

Language:

■ Language

Description	Set the e-mail and System Log language.
Settings	<ul style="list-style-type: none"> • Japanese • English • French • Spanish • Dutch • Traditional Chinese • Simplified Chinese
Default values	English

1.4. Time



1.4.1. Time Zone

■ Select time zone

Description	Select the time zone to be used.
Settings	Select from 99 regions
Default values	(GMT-08:00) Pacific Standard Time (U.S.), Tijuana

1.4.2. Daylight Savings Time

■ Enable automatic daylight savings time

Description	Adjust the daylight saving time automatically to fit the region selected in "■Select time zone."
Settings	<ul style="list-style-type: none"> • Yes • No
Default values	No

1.4.3. NTP

■ Enable NTP

Description	Enable NTP server time retrieval. If selecting "Yes," configure "2.8. NTP" ► P.71 .
Settings	<ul style="list-style-type: none"> • Yes • No
Default values	No

Configuring the station

1.4.4. Date and Time

■ Time

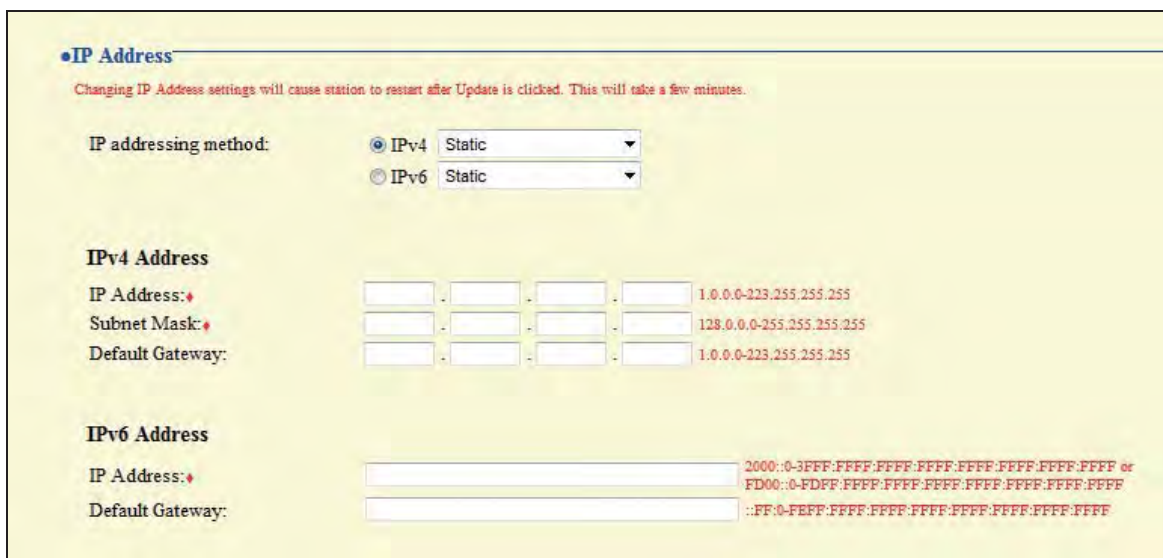
Description	Set the current time for the system. Set the current time as the time is used for incoming calls and outgoing calls.
Settings	2012/1/1/00:00:00-2037/12/31/23:59:59 <input type="button" value="Sync with PC"/> : Synchronized with the current time setting of the PC.
Default values	2013/1/1/00:00:00
Remarks	The clock cannot be updated by pressing <input type="button" value="Update"/> . Press <input type="button" value="Apply Time to Station"/> to update the clock.

2. Network Settings

2.1. IP Address

Caution

When a setting related to the IP Address is updated, the station will restart. In some cases, it may take around 10 minutes for the station to start up.



■ IP addressing method

Description	Select the addressing method for the IP Address selected.
Settings	<p>When selecting IPv4:</p> <ul style="list-style-type: none"> • Static • DHCP <p>When selecting IPv6:</p> <ul style="list-style-type: none"> • Static • Stateless • DHCPv6
Default values	IPv4 Static

Configuring the station

Caution

- IPv4 and IPv6 cannot be mixed in the same system.
- When selecting "DHCP" for IPv4, configure the system so that the DHCP server assigns a Static IP Address to each station.
- When selecting "Stateless" for IPv6, do not change the prefix of the device so that it can transmit RA.
- When selecting "DHCPv6" for IPv6, configure the system so that the DHCP server assigns a Static IP Address to each station. DUID of the station is "00030001 + MAC address."
- When setting up a product from another manufacturer, such as a DHCP server, refer to its manual.

2.1.1. IPv4 Address

Caution

When "■IP addressing method" is "DHCP," entering an "■IP Address," "■Subnet Mask," and "■Default Gateway" and the station is updated, these changes will not be applied.

■ IP Address ♦♣

Description	Set the IP Address. Do not use duplicate IP Addresses.
Settings	1.0.0.0-223.255.255.255
Default values	-

■ Subnet Mask ♦

Description	Set the subnet mask.
Settings	128.0.0.0-255.255.255.255
Default values	-

■ Default Gateway

Description	Set the Default Gateway of the network to which the station belongs.
Settings	1.0.0.0-223.255.255.255
Default values	-

2.1.2. IPv6 Address

Caution

When "■IP addressing method" is "Stateless" and "DHCPv6," entering an "■IP Address" and "■Default Gateway" and the station is updated, these changes will not be applied.

■ IP Address ♦♣

Description	Set the IP Address. Do not use duplicate IP Addresses.
Settings	2000::0-3FFF:FFFF:FFFF:FFFF:FFFF:FFFF:FFFF:FFFF or FD00::0-FDFF:FFFF:FFFF:FFFF:FFFF:FFFF:FFFF:FFFF
Default values	-

■ Default Gateway

Description	Set the Default Gateway of the network to which the station belongs.
Settings	::FF:0-FEFF:FFFF:FFFF:FFFF:FFFF:FFFF:FFFF
Default values	-

2.2. DNS

When setting up the NTP server with its host name in "2.8. NTP" ➤ [P.71](#), or when configuring "6.5. E-mail Settings" ➤ [P.96](#) to use the e-mail function, enter DNS server information to perform name resolution.

DNS

Primary Server:

[IPv4]

-

-

-

-

1.0.0.0-223.255.255.255

[IPv6]

::FF:0-FE:FF:FF:FF:FF:FF:FF:FF:FF:FF:FF:FF:FF:FF:FF:FF:FF

Secondary Server:

[IPv4]

-

-

-

-

1.0.0.0-223.255.255.255

[IPv6]

::FF:0-FE:FF:FF:FF:FF:FF:FF:FF:FF:FF:FF:FF:FF:FF:FF:FF:FF

■ Primary Server

Description	Set the IP Address of the primary DNS server.
Settings	[IPv4]: 1.0.0.0-223.255.255.255 [IPv6]: ::FF:0-FE:FF:FF:FF:FF:FF:FF:FF:FF:FF:FF:FF:FF:FF:FF:FF:FF
Default values	-

■ Secondary Server

Description	Set the IP Address of the secondary DNS server.
Settings	[IPv4]: 1.0.0.0-223.255.255.255 [IPv6]: ::FF:0-FE:FF:FF:FF:FF:FF:FF:FF:FF:FF:FF:FF:FF:FF:FF:FF:FF
Default values	-

2.3. SIP



2.3.1. Connection

■ SIP Signaling Port ♦

Description	Set the port for SIP communication. Set the same port number for the stations which communicate with each other.
Settings	1-65535
Default values	5060

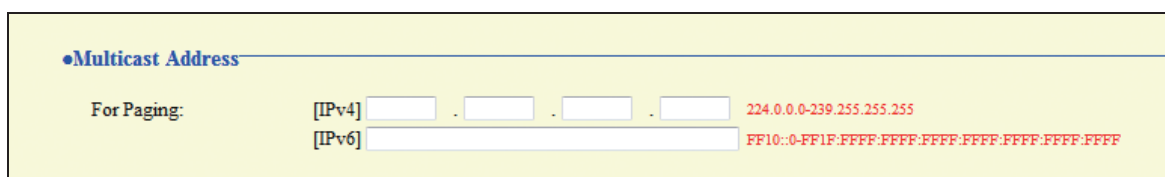
2.3.2. Miscellaneous

■ Call health check timer [sec] ♦

Description	When a communication error occurs during a call or while monitoring, the connection is disconnected after the specified time elapses.
Settings	<ul style="list-style-type: none"> Do not transmit re-INVITE: A communication error should not be detected. 80-3600 sec
Default values	80-3600 sec, 90 sec

2.4. Multicast Address

Set when configured to use Multicast in "3.3. Group ♣" ➤ [P.79](#) and "5.3. All Page" ➤ [P.87](#).



■ For Paging

Description	Set the multicast address for paging all or paging a group through multicast. Each station must have a unique multicast address. Set the all paging address from the multicast address as the default.
Settings	[IPv4]: 224.0.0.0-239.255.255.255 [IPv6]: FF10::0-FF1F:FFFF:FFFF:FFFF:FFFF:FFFF:FFFF:FFFF
Default values	-

2.5. Video

Video

The 'Video Encoder 1' RTP End Port should be greater than 90 digits from the RTP Start Port.
The 'Video Encoder 2' RTP End Port should be greater than 10 digits from the RTP Start Port.

Video Encoder 1

RTP Start Port: 30000 1-65534
RTP End Port: 31000 1-65535

Video Encoder 2

RTP Start Port: 32000 1-65534
RTP End Port: 33000 1-65535

2.5.1. Video Encoder 1

Configure the video settings for a call between IX system stations.

■ RTP Start Port ◆

Description	Set the start port for the RTP communication range. The (RTP End Port) should be greater than 90 digits from the (RTP Start Port). If a smaller range is set, in some cases ports outside the range will still be used.
Settings	1-65534
Default values	30000

■ RTP End Port ◆

Description	Set the end port for the RTP communication range. The (RTP End Port) should be greater than 90 digits from the (RTP Start Port). If a smaller range is set, in some cases ports outside the range will still be used.
Settings	1-65535
Default values	31000

2.5.2. Video Encoder 2

Set to receive video from a network camera made by other manufacturers through ONVIF.

■ RTP Start Port ◆

Description	Set the start port for the RTP communication range. The (RTP End Port) should be greater than 10 digits from the (RTP Start Port). If a smaller range is set, in some cases ports outside the range will still be used.
Settings	1-65534
Default values	32000

■ RTP End Port ◆

Description	Set the end port for the RTP communication range. The (RTP End Port) should be greater than 10 digits from the (RTP Start Port). If a smaller range is set, in some cases ports outside the range will still be used.
Settings	1-65535
Default values	33000

2.6. Audio

•Audio

The Audio 1 RTP End Port should be greater than 210 digits from the RTP Start Port.
The Audio 2 RTP End Port should be greater than 10 digits from the RTP Start Port.

Audio CODEC: ☒ G.711(μ-law) ☐ G.711(A-law) This setting is ignored when transmitting to multiple stations (paging, etc.)

Audio RTP Transmission Interval [msec]:

RTP Idle Detection Time [sec]: 10-180sec

Audio 1 RTP Start Port: 1-65534

Audio 1 RTP End Port: 1-65535

Audio 2 RTP Start Port: 1-65534

Audio 2 RTP End Port: 1-65535

Audio Buffer

Packets Buffered at Audio Start:

Maximum Packets Buffered: Maximum Packet Buffer must be larger than Audio Start Buffer.

■ Audio CODEC

Description	Select the Audio CODEC.
Settings	<ul style="list-style-type: none"> G.711 (μ-law) G.711 (A-law)
Default values	G.711 (μ-law)

Caution

Stations with different audio CODEC cannot call, monitor, or page each other.

■ Audio RTP Transmission Interval [msec]

Description	Select the transmission interval of RTP audio.
Settings	20, 40, 60, 80, 100 msec
Default values	20 msec

■ RTP Idle Detection Time [sec] ♦

Description	Set the detection time of the idle state of RTP audio. If RTP audio is not received within the specified time during a call or while monitoring or paging, it will be disconnected.
Settings	10-180 sec (by 1 sec)
Default values	10 sec

■ Audio 1 RTP Start Port ♦

Description	Set the start port for the Audio 1 RTP communication range. The (RTP End Port) should be greater than 210 digits from the (RTP Start Port). If a smaller range is set, in some cases ports outside the range will still be used.
Settings	1-65534
Default values	20000

■ Audio 1 RTP End Port ♦

Description	Set the end port for the Audio 1 RTP communication range. The (RTP End Port) should be greater than 210 digits from the (RTP Start Port). If a smaller range is set, in some cases ports outside the range will still be used.
Settings	1-65535
Default values	21000

■ Audio 2 RTP Start Port ♦

Description	Set the start port for the Audio 2 RTP communication range. The (RTP End Port) should be greater than 10 digits from the (RTP Start Port). If a smaller range is set, in some cases ports outside the range will still be used.
Settings	1-65534
Default values	22000

■ Audio 2 RTP End Port ♦

Description	Set the end port for the Audio 2 RTP communication range. The (RTP End Port) should be greater than 10 digits from the (RTP Start Port). If a smaller range is set, in some cases ports outside the range will still be used.
Settings	1-65535
Default values	23000

2.6.1. Audio Buffer

■ Packets Buffered at Audio Start

Description	Set the number of packets buffered until audio is started.
Settings	0-4
Default values	1

■ Maximum Packets Buffered

Description	Set the maximum number of packets to be buffered. When the system receives more packets, oldest packets are discarded. Choose a value greater than "■Packets Buffered at Audio Start."
Settings	2-10
Default values	3

2.7. Packet Priority

Caution

When a setting related to VLAN is updated, the station will restart. In some cases, it may take around 10 minutes for the station to start up.



■ TOS Value (Audio)

Description	Set the audio packet priority (TOS Value).
Settings	0x00-0xFF
Default values	0x00

■ TOS Value (SIP)

Description	Set the packet priority (TOS Value) for SIP.
Settings	0x00-0xFF
Default values	0x00

■ VLAN Setting

Description	Enable/disable VLAN tagging.
Settings	<ul style="list-style-type: none"> • Disable • Enable
Default values	Disable

Important

When "■VLAN Setting" is enabled, ensure that the switches, PCs, and stations are all configured for VLAN operation.

■ VLAN ID ♦

Description	Enter the VLAN ID.
Settings	1-4094
Default values	1

■ VLAN Priority

Description	Set the VLAN priority.
Settings	0 (Low) through 7 (High)
Default values	0

2.8. NTP

When using NTP, it must first be enabled. "■Enable NTP" ➤ [P.59](#)

NTP

Enable NTP in [Station Information] must be set to 'Yes'.

Primary Server

Address:

[IPv4]

1.0.0.0-223.255.255.255 or Hostname (1-64 alphanumeric characters)

[IPv6]

::FF:0-FE:FF:FFFF:FFFF:FFFF:FFFF:FFFF or Hostname (1-64 alphanumeric characters)

Port:

123

1-65535

Secondary Server

Address:

[IPv4]

1.0.0.0-223.255.255.255 or Hostname (1-64 alphanumeric characters)

[IPv6]

::FF:0-FE:FF:FFFF:FFFF:FFFF:FFFF:FFFF or Hostname (1-64 alphanumeric characters)

Port:

123

1-65535

Synchronization Interval [hour]: ♦ 24 Sync every [1-255] hours

2.8.1. Primary Server

■ Address

Description	Set the IP Address of the primary NTP server. When using a "Hostname," set up "2.2. DNS" ➤ P.65 .
Settings	[IPv4]: 1.0.0.0-223.255.255.255 or Hostname (1-64 alphanumeric characters) [IPv6]: ::FF:0-FEFF:FFFF:FFFF:FFFF:FFFF:FFFF:FFFF or Hostname (1-64 alphanumeric characters)
Default values	-

■ Port

Description	Set the communication port for the NTP server.
Settings	1-65535
Default values	123

2.8.2. Secondary Server

■ Address

Description	Set the IP Address of the primary NTP server. When using a "Hostname," set up "2.2. DNS" ► P.65 .
Settings	[IPv4]: 1.0.0.0-223.255.255.255 or Hostname (1-64 alphanumeric characters) [IPv6]: ::FF:0-FE:FF:FFFF:FFFF:FFFF:FFFF:FFFF:FFFF or Hostname (1-64 alphanumeric characters)
Default values	-

■ Port

Description	Set the communication port for the NTP server.
Settings	1-65535
Default values	123

■ Synchronization Interval [hour] ♦

Description	Set the interval for synchronizing the clock with NTP server.
Settings	1-255 hours (by one hour)
Default values	24 hour

3. System Information

3.1. Location Registry

#	Location Name <small>1-24 alphanumeric characters</small>
1	
2	
3	
4	
5	
6	
7	
8	
9	
10	
11	
12	
13	
14	
15	

■ Location Name ♣

Description	Register the locations to be used for the "Address book." Register up to 50 locations.
Settings	1-24 alphanumeric characters
Default values	-

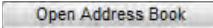
3.2. Address book ♣

Click , the window to create a new "Address book" will be shown.

Important

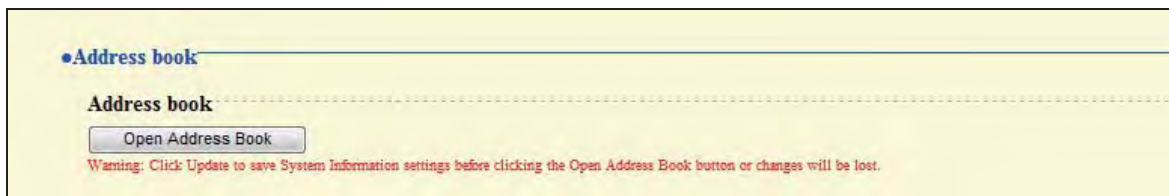
Set "1.3. Language" ➤ [P.58](#) before setting "Address book."

Caution

- When clicking , the window is switched to "Address book creation" window. If an entry is made and the screen is closed without saving/updating, the entry will be lost.
- Enter text in the language selected in "1.3. Language."
If the language for the Master Station display is different from the one selected in "1.3. Language," the characters may appear incorrectly. To avoid this, enter alphanumeric characters only.

Point

You can also show the window in which you can create a new "Address book" by clicking the setting menu title "Address book."



3.2.1. Station List ♣

Stations registered in the "Address book" can be called, paged and monitored. Up to 500 stations can be registered in the "Address book."

Caution

- When searching for a station, they will be listed in the order registered in the "Address book."
- Do not register a station in its own "Address book."
- Station information should be consistent between address books (Station Numbers and Names).

◆Address book

Station List

#	Station Information			
	Number <small>3-5 digits</small>	Name <small>1-24 alphanumeric characters</small>	Location	Type
1				
2				
3				
4				
5				

#	Station Network Address	
	IPv4 <small>1.0.0.0-223.255.255.255</small>	IPv6 <small>2000::0-3FFF:FFFF:FFFF:FFFF:FFFF:FFFF:FFFF:FFFF or FD00::0-FDFF:FFFF:FFFF:FFFF:FFFF:FFFF:FFFF:FFFF</small>
1		
2		
3		
4		

Caution

The sequence of entries in Station Information table must match the sequence of Station Network Address table.

■ Number

Description	Enter the Station Number.
Settings	3-5 digits
Default values	-

Configuring the station

■ Name

Description	Enter the Station Name.
Settings	1-24 alphanumeric characters
Default values	-

■ Location

Description	Select the Location where the station is installed. When searching for a station "By Location" this information will be used.
Settings	Select one from the location registered in "3.1. Location Registry" ► P.73 .
Default values	-

■ Type

Description	Select the type of station.
Settings	<ul style="list-style-type: none">• Door Station: Select for Video Door Station and Audio Only Door Station.• Master Station
Default values	-

■ IPv4

Description	Set the IPv4 Address of the station.
Settings	1.0.0.0-223.255.255.255
Default values	-

■ IPv6

Description	Set the IPv6 Address of the station.
Settings	2000::0-3FFF:FFFF:FFFF:FFFF:FFFF:FFFF:FFFF:FFFF or FD00::0-FDFF:FFFF:FFFF:FFFF:FFFF:FFFF:FFFF:FFFF
Default values	-

3.2.2. Network Camera List ♣

Master Station supports the ONVIF "Profile S" interface standard.

Video from an ONVIF "Profile S" compliant camera can be viewed with the IX-MV master station.
(For product compatibility list, refer to our Web site "http://www.aiphone.net/.")

Register the network camera with the Master Station.

Up to 50 network cameras can be registered.

When registering a network camera, configure "6.4. Network Camera Integration" ➤ **P.93**.

Caution

When searching for a camera, the cameras will be listed in the order in which they are registered in the "Address book."

Important

Once the information of network camera registration is entered, it will be used to automatically populate the Profile and Event data ("■Profile ♣" ➤ **P.93** and "■Event" ➤ **P.94**) using multicast. If multicast is not available, the network camera will need to be registered using the Support Tool.

Network Camera List			
#	Camera Information		
	Camera name 1-24 alphanumeric characters	ID 1-32 alphanumeric characters	Password 1-32 alphanumeric characters

Network Camera Address				
#	Network Camera Address			
	IPv4 1.0.0.0-223.255.255.255		IPv6 ::FF:0:FFFF:FFFF:FFFF:FFFF:FFFF:FFFF	

Caution

- The sequence of entries in Camera Information table must match the sequence of Network Camera Address table.
- The serial number "#" will be described after "Camera Information" and "Network Camera Address" are register.

■ Camera name

Description	Enter the Network Camera Name.
Settings	1-24 alphanumeric characters
Default values	-

■ ID

Description	Enter the authentication ID of the network camera.
Settings	1-32 alphanumeric characters
Default values	-

■ Password

Description	Enter the authentication password of the network camera.
Settings	1-32 alphanumeric characters
Default values	-

■ IPv4

Description	Set the IPv4 Address of the network camera.
Settings	1.0.0.0-223.255.255.255
Default values	-

■ IPv6

Description	Set the IPv6 Address of the network camera.
Settings	::FF:0-FE:FF:FFFF:FFFF:FFFF:FFFF:FFFF:FFFF
Default values	-

Point

"■Password" will be displayed as "●●●●" on the screen.

3.3. Group ♣

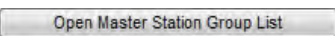
Register up to 50 groups (up to 50 stations per group).

Click  to show the group list window.

Important

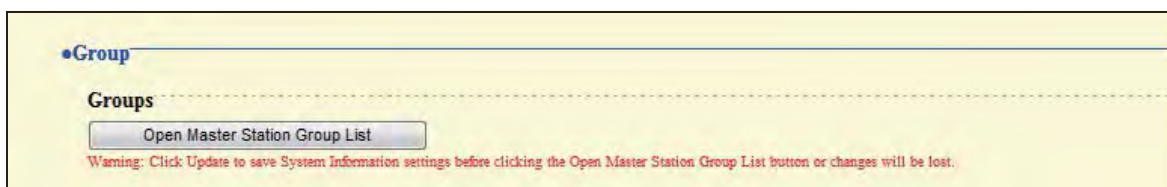
Set "1.3. Language" ➤ [P.58](#) before setting "Group."

Caution

- When clicking , the window is switched to "Group List." If entered data has not been saved / updated, it will be lost.
- Enter text in the language selected in "1.3. Language." If the language for the Master Station display is different from the one selected in "1.3. Language," the characters may appear incorrectly. To avoid this, enter text in the alphabet.

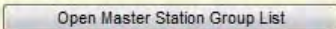
Point

The group list window can also be shown by clicking the "Group" title.

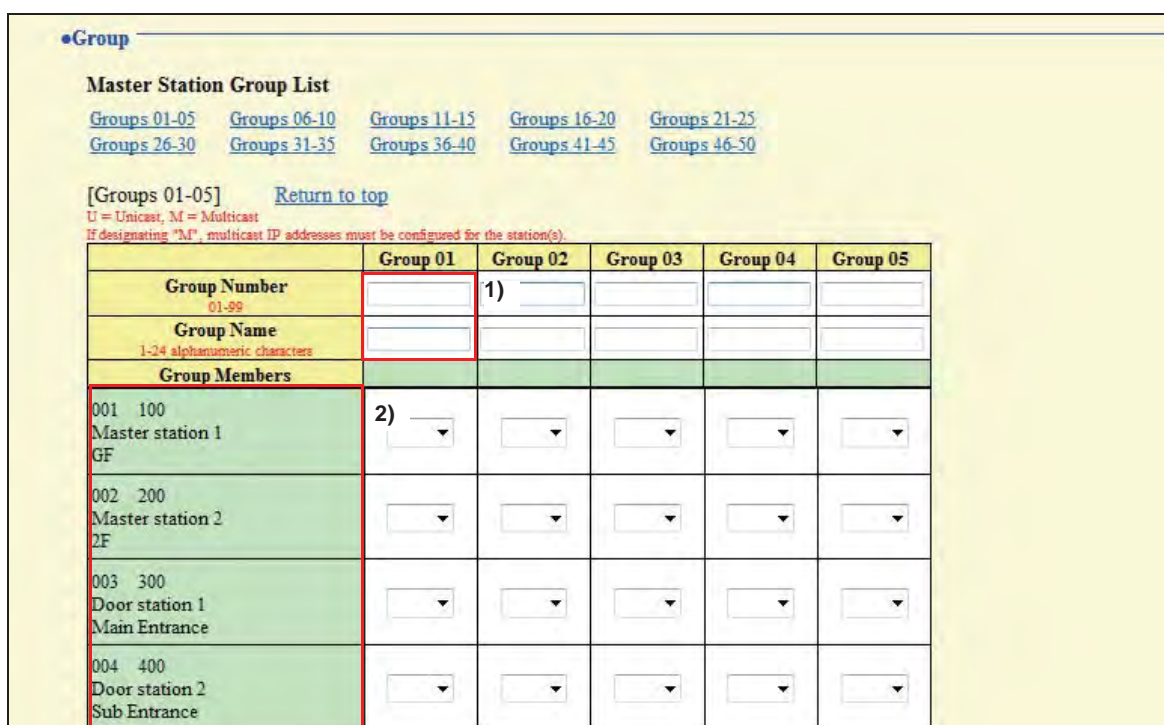


•Group

Groups



Warning: Click Update to save System Information settings before clicking the Open Master Station Group List button or changes will be lost.

•Group

Master Station Group List

[Groups 01-05](#) [Groups 06-10](#) [Groups 11-15](#) [Groups 16-20](#) [Groups 21-25](#)
[Groups 26-30](#) [Groups 31-35](#) [Groups 36-40](#) [Groups 41-45](#) [Groups 46-50](#)

[Groups 01-05] [Return to top](#)

U = Unicast, M = Multicast
 If designating "M", multicast IP addresses must be configured for the station(s).

	Group 01	Group 02	Group 03	Group 04	Group 05
Group Number 01-99	<input type="text"/>	1) <input type="text"/>	<input type="text"/>	<input type="text"/>	<input type="text"/>
Group Name 1-24 alphanumeric characters	<input type="text"/>	<input type="text"/>	<input type="text"/>	<input type="text"/>	<input type="text"/>
Group Members					
001 100 Master station 1 GF	2) <input type="text"/>	<input type="text"/>	<input type="text"/>	<input type="text"/>	<input type="text"/>
002 200 Master station 2 2F	<input type="text"/>	<input type="text"/>	<input type="text"/>	<input type="text"/>	<input type="text"/>
003 300 Door station 1 Main Entrance	<input type="text"/>	<input type="text"/>	<input type="text"/>	<input type="text"/>	<input type="text"/>
004 400 Door station 2 Sub Entrance	<input type="text"/>	<input type="text"/>	<input type="text"/>	<input type="text"/>	<input type="text"/>

The stations registered in "3.2.1. Station List ♣" ➤ [P.75](#) will be shown.

Configuring the station

How to register a group

- 1) Enter the "Group Number" and "Group Name" of the group to be set in the list.

Group Number: 01 through 99

Group Name: 1-24 alphanumeric characters

- 2) Select group to which each station belongs.

Blank: Does not belong to group.

U: Belongs to group. Paging audio is transmitted in unicast.

M: Belongs to group. Paging audio is transmitted in multicast.

Point

Group Call is always transmitted in unicast, regardless of setting.

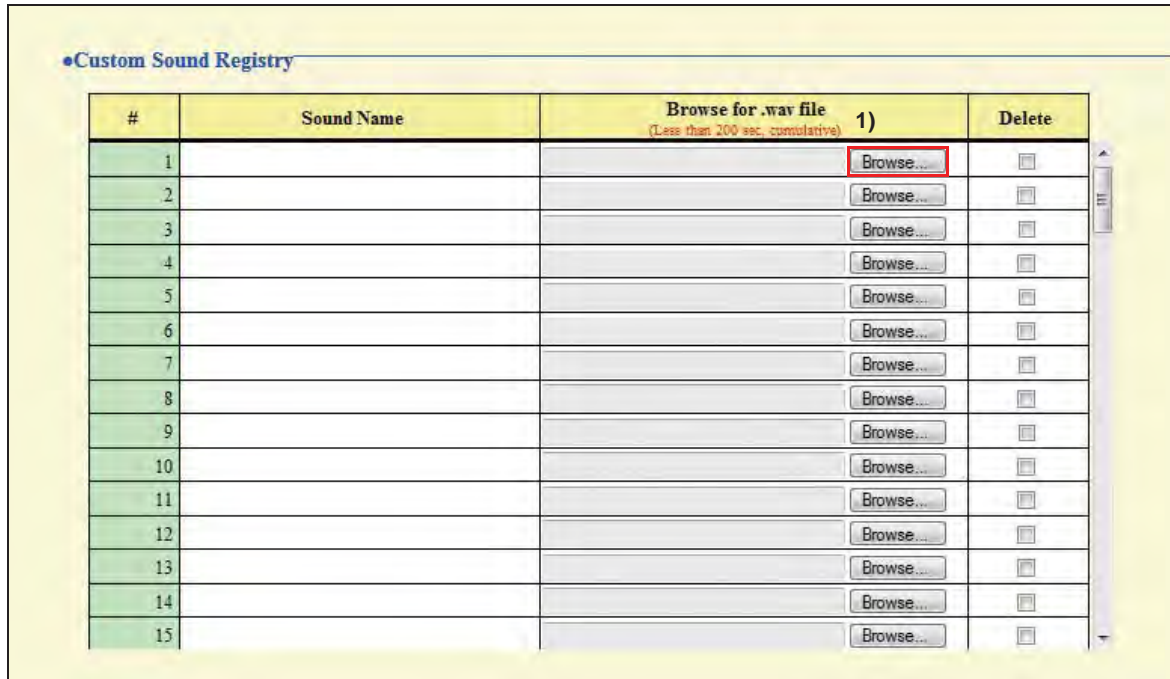
Caution

When choosing Multicast, configure "2.4. Multicast Address" ➤ P.66.

- 3) When done, click  to update the settings.

3.4. Custom Sound Registry

Register a maximum of 100 audio files to be used for ringtone (total length of within approximately 200 seconds / approximately 3.2 MB).



•Custom Sound Registry

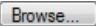
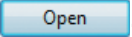

#	Sound Name	Browse for .wav file (Less than 200 sec, cumulative) 1)	Delete
1		Browse...	<input type="checkbox"/>
2		Browse...	<input type="checkbox"/>
3		Browse...	<input type="checkbox"/>
4		Browse...	<input type="checkbox"/>
5		Browse...	<input type="checkbox"/>
6		Browse...	<input type="checkbox"/>
7		Browse...	<input type="checkbox"/>
8		Browse...	<input type="checkbox"/>
9		Browse...	<input type="checkbox"/>
10		Browse...	<input type="checkbox"/>
11		Browse...	<input type="checkbox"/>
12		Browse...	<input type="checkbox"/>
13		Browse...	<input type="checkbox"/>
14		Browse...	<input type="checkbox"/>
15		Browse...	<input type="checkbox"/>

■ Custom Sound Registry


Description	Register the audio files to be used for a ringtone. Up to 100 files can be registered.
Settings	<ul style="list-style-type: none"> • Sound Name: File name of the registered file. • Browse for .wav file: Total of 100 files, and total length of approximately 200 seconds Supported file format <ul style="list-style-type: none"> - File format: .wav - Audio sample size: 16 bits - Audio sample rate: 8 kHz - Number of channels: One (monaural)
Default values	-

Configuring the station

How to register an audio file

- 1) Click  at the end of the row for the station for which to register the file.
- 2) Select the audio file to register, and click .
- 3) When done, click .

Point

- To delete a registered audio file, select the file in the delete column and click .
- When using the file for a ringtone or a network camera event tone, set up the silent time for the source.
- A DVD-ROM with sample files is included in the package for Master Station.

4. Contact / Audio Output Settings

4.1. Contact Input

•Contact Input

Contact Input Specifications

Input Number	Input Specifications		Usage
	Type	Detection time [msec] ♦ <small>200-2000msec / 100msec step</small>	
1	Make ▼	200 msec	▼

4.1.1. Contact Input Specifications

■ Type

Description	Set the type of Contact Input.
Settings	<ul style="list-style-type: none"> • Make (N/O) • Break (N/C)
Default values	Make

■ Detection time [msec] ♦

Description	Set the detection confirmation time of Contact Input.
Settings	200-2000 msec (by 100 msec)
Default values	200 msec

■ Usage

Description	Set the Usage of Contact Input.
Settings	<ul style="list-style-type: none"> • Blank: Not used • Call: Call will be originated when a contact input is triggered.
Default values	Blank
Remarks	When set to "Call," be sure to configure "6.2. Contact Input Call" ► P.91 .

4.2. Output Specifications

•Output Specifications

Relay Output Specifications

Output Number	Output Specifications	Usage
	Output Time [msec / sec] ♦ <small>200-2000msec / 200msec step, 3-300sec / 1sec step</small>	
1	200-2000 msec ▼ 400 msec	▼

4.2.1. Relay Output Specifications

■ Output Time [msec / sec] ♦

Description	Set the output time of the relay output. The entry is identical to "■Output Time [msec / sec] ♦" ➤ P.90 . When the setting is changed, "■Output Time [msec / sec] ♦" ➤ P.90 will be changed as well.
Settings	<ul style="list-style-type: none"> • 0 (Momentary): Delivers output while "Release" button is pressed. • 200-2000 msec (by 200 msec) • 3-300 sec (by 1 sec)
Default values	200-2000 msec, 400 msec

■ Usage

Description	Set the usage of Relay Output. The entry is identical to "■Usage" ➤ P.90 . When the setting is changed, "■Usage" ➤ P.90 will be changed as well.
Settings	<ul style="list-style-type: none"> • Blank: Not used • Door Release: Delivers output to release the door.
Default values	Blank

5. Call Settings

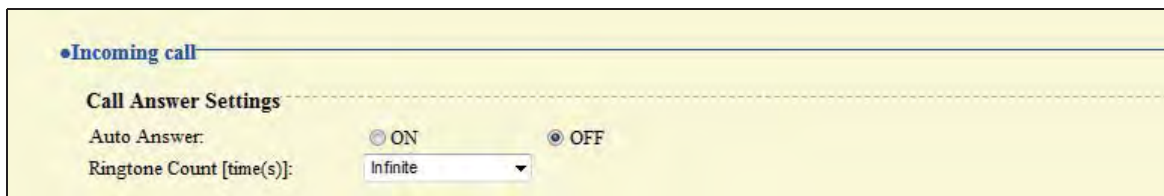
5.1. Called Stations

5.1.1. Call Destination Settings

Any station registered in the "Address book" can be called.

5.2. Incoming call

5.2.1. Call Answer Settings



■ Auto Answer

Description	Set Auto Answer feature for an incoming Individual Call. Auto Answer: When a call comes in, it is automatically connected.
Settings	<ul style="list-style-type: none"> • ON • OFF
Default values	OFF

■ Ringtone Count [time(s)]

Description	Set the Ringtone Count for an incoming call.
Settings	<ul style="list-style-type: none"> • Infinite: Ringtone continues until the recipient responds or the call ends. • 1-20 times
Default values	Infinite

5.2.2. Ringtone Settings (Normal Call)

Ringtone Settings (Normal Call)

Source Station	Ringtone
001 100 Master station 1 GF	Call pattern 1 ▼
002 200 Master station 2 2F	Call pattern 1 ▼
003 300 Door station 1 Main Entrance	Call pattern 1 ▼
004 400 Door station 2 Sub Entrance	Call pattern 1 ▼
005 500 Door station 3 Parking	Call pattern 1 ▼

The registered stations will be shown in "3.2.1. Station List ♣" ➤ [P.75](#).

■ Ringtone

Description	Set the ringtone for an incoming call. Set up a different ringtone for each source.
Settings	<ul style="list-style-type: none"> • Call pattern 1 • Call pattern 2 • Call pattern 3 • Call pattern 4 • Call pattern 5 • Call pattern 6 • Tremolo sound • Busy tone • On-hold tone • Operation sound • Error sound • Select from the sound source registered in "3.4. Custom Sound Registry" ➤ P.81
Default values	Call pattern 1

5.3. All Page

Caution

- Unicast can reach up to 50 stations. If needing to page more than 50 stations at once, use multicast.
- When paging the stations in multicast, configure "2.4. Multicast Address" ➤ P.66.

•All Page

Multicast is utilized for All Page function (by default) and must be configured for the stations.
Max. 50 stations can be paged using unicast transmission. Select stations for unicast transmission.

Station Information	Unicast
001 100 Master station 1 GF	<input type="checkbox"/>
002 200 Master station 2 2F	<input type="checkbox"/>
003 300 Door station 1 Main Entrance	<input type="checkbox"/>
004 400 Door station 2 Sub Entrance	<input type="checkbox"/>
005 500 Door station 3 Parking	<input type="checkbox"/>

■ Unicast

Description	Select this to page the stations in unicast. Unicast can reach up to 50 stations.
Settings	Unchecked <input type="checkbox"/> : Multicast Checked <input checked="" type="checkbox"/> : Unicast
Default values	Unchecked <input type="checkbox"/> : Multicast

6. Function Settings

6.1. Door Release Settings

6.1.1. Door Release Authorization

Door Release Settings

Door Release Authorization

Authentication Key: 1-4 digits

■ Authentication Key

Description	Set the Authentication key to allow control of the master station's door release output. Authentication key: When this matches the key of the other master station, control will be permitted.
Settings	1-4 digits
Default values	-

Point

"■ Authentication Key" will be displayed as "●●●●" on the screen.

6.1.2. Door Release Output Assignment

Door Release Output Assignment		
Station Information	Contact Assignment	Authentication Key <small>1-4 digits</small>
001 100 Master station 1 GF	Destination Station ▼	<input type="text"/>
002 200 Master station 2 2F	Destination Station ▼	<input type="text"/>
003 300 Door station 1 Main Entrance	Destination Station ▼	<input type="text"/>
004 400 Door station 2 Sub Entrance	Destination Station ▼	<input type="text"/>
005 500 Door station 3 Parking	Destination Station ▼	<input type="text"/>

The stations registered in "3.2.1. Station List ♣" ➤ P.75 will be shown.

■ Contact Assignment

Description	For each station, set which door release output is used when the door release button is pressed.
Settings	<ul style="list-style-type: none"> • Originating Station: Door release output of the originating station is used. • Destination Station: Door release output of the destination station is used.
Default values	Destination Station

■ Authentication Key

Description	When "Destination Station" is chosen in "■Contact Assignment," set the authentication key to be used when the door release button is pressed. This should match the authentication key of the destination station.
Settings	1-4 digits
Default values	-

Point

"■Authentication Key" will be displayed as "●●●●" on the screen.

6.1.3. Door Release Output Settings (same as Contact / Audio Output Settings)

Door Release Output Settings (same as Contact / Audio Output Settings)		
Output Number	Output Specifications	Usage
	Output Time [msec / sec] ♦	
	200-2000msec / 200msec step, 3-300sec / 1sec step	
1	200-2000 msec ▼ 400 msec	▼

■ Output Time [msec / sec] ♦

Description	Set the output time of the relay. The entry is identical to "■Output Time [msec / sec] ♦" > P.84. When the setting is changed, "■Output Time [msec / sec] ♦" > P.84 will be changed as well.
Settings	<ul style="list-style-type: none"> • 0 (Momentary): Delivers output while "Door Release" button is pressed. • 200-2000 msec (by 200 msec) • 3-300 sec (by 1 sec)
Default values	200-2000 msec, 400 msec

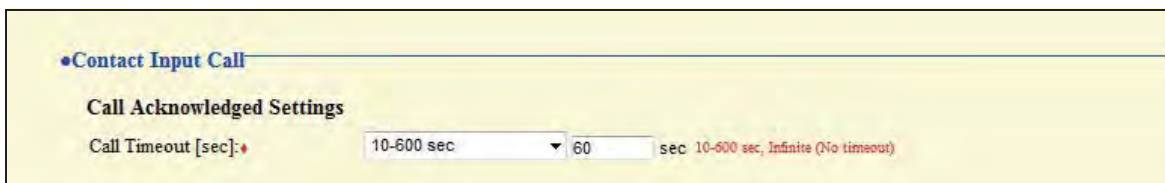
■ Usage

Description	Set the usage of relay output. The entry is identical to "■Usage" > P.84. When the setting is changed, "■Usage" > P.84 will be changed as well.
Settings	<ul style="list-style-type: none"> • Blank: Not used • Door Release: Delivers output to release the door.
Default values	Blank

6.2. Contact Input Call

When choosing "Call," configure "■Usage" ➤ [P.83](#).

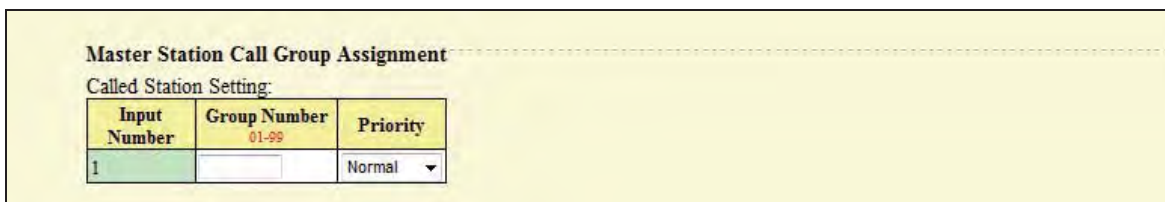
6.2.1. Call Acknowledged Settings



■ Call Timeout [sec] ♦

Description	Set the call ring timer for a Contact Input call.
Settings	<ul style="list-style-type: none"> • 10-600 sec (by 1 sec) • Infinite: Ringing continues until the caller stops or the recipient responds.
Default values	10-600 sec, 60 sec

6.2.2. Master Station Call Group Assignment



■ Group Number

Description	Set the Group Number to be called when the contact input is triggered.
Settings	01-99
Default values	-

■ Priority

Description	Set the Priority of the call when the contact input is triggered.
Settings	<ul style="list-style-type: none"> • Normal • Priority • Urgent
Default values	Normal

6.2.3. Ringtone Settings (Option Input)

Ringtone Settings (Option Input)	
Source Station	Ringtone
001 100 Master station 1 GF	Call pattern 2 ▼
002 200 Master station 2 2F	Call pattern 2 ▼
003 300 Door station 1 Main Entrance	Call pattern 2 ▼
004 400 Door station 2 Sub Entrance	Call pattern 2 ▼
005 500 Door station 3 Parking	Call pattern 2 ▼

The stations registered in "3.2.1. Station List ♣" ➤ [P.75](#) will be shown.

■ Ringtone

Description	Set the ringtone for an incoming contact input call. Set a different ringtone for each source.
Settings	<ul style="list-style-type: none"> • Call pattern 1 • Call pattern 2 • Call pattern 3 • Call pattern 4 • Call pattern 5 • Call pattern 6 • Tremolo sound • Busy tone • On-hold tone • Operation sound • Error sound • Select from the sound source registered in "3.4. Custom Sound Registry" ➤ P.81
Default values	Call pattern 2

6.3. Paging Settings



6.3.1. Paging Pretone Setting

■ Pretone

Description	Choose to enable/disable the Pretone function when the station is paged.
Settings	<ul style="list-style-type: none"> • ON • OFF
Default values	ON

6.3.2. Paging Time Setting

■ Paging Timeout [sec] ♦

Description	Set the maximum paging duration.
Settings	10-600 sec (by 1 sec)
Default values	30 sec

6.4. Network Camera Integration



■ Profile ♣

Description	Select Profile of the network camera registered in "3.2.2. Network Camera List ♣" > P.77. This becomes enabled when a network camera is registered and the profile can be obtained from it. The profile can be automatically obtained when a camera is registered in the network camera list. For details of the profile, refer to the manual of the network camera.
Settings	-
Default values	-

6.4.1. Event Registry

Register events from the network cameras. When an event is received, the event tone will sound and monitoring is started.

Event Registry

	Camera Name	Event
1		
2		
3		
4		
5		
6		
7		
8		
9		
10		
11		
12		
13		
14		
15		

Network Camera Event Tone:

Call pattern 3

Event Tone Count [time(s)]:

1

■ Camera Name

Description	Select the network camera for which an event is to be registered. This becomes enabled when a network camera is registered in "3.2.2. Network Camera List ♣" ➤ P.77 .
Settings	-
Default values	-

■ Event

Description	Select the content of the event for the network cameras. This becomes enabled when a network camera is registered in "3.2.2. Network Camera List ♣" ➤ P.77 and the event information can be obtained from it. The Event can be automatically obtained when a camera is registered in the network camera list. For details of the Event, refer to the manual of the network camera.
Settings	-
Default values	-

■ Network Camera Event Tone

Description	Select the event tone for the network cameras.
Settings	<ul style="list-style-type: none">• Call pattern 1• Call pattern 2• Call pattern 3• Call pattern 4• Call pattern 5• Call pattern 6• Tremolo sound• Busy tone• On-hold tone• Operation sound• Error sound• Select from the sound source registered in "3.4. Custom Sound Registry" ➤ P.81
Default values	Call pattern 3

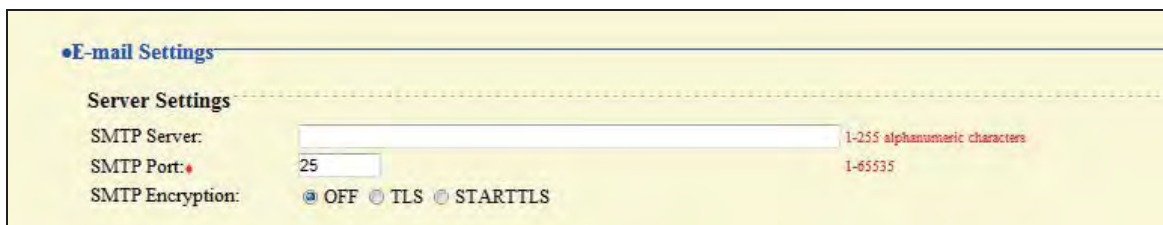
■ Event Tone Count [time(s)]

Description	Set the Event Tone Count for the network cameras.
Settings	<ul style="list-style-type: none">• Infinite: Ringing continues until the event is terminated.• 1-20 counts
Default values	1

6.5. E-mail Settings

Configure this section when e-mail notification of station operation is required.

When configuring this section, configure "2.2. DNS" ➤ [P.65](#).



6.5.1. Server Settings

■ SMTP Server

Description	Set the SMTP Server. When choosing IPv4, enter IP address or the host name. When choosing IPv6, enter the host name.
Settings	1-255 alphanumeric characters
Default values	-

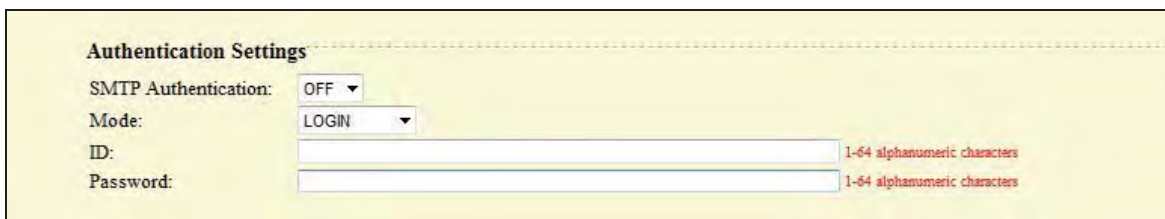
■ SMTP Port ◆

Description	Enter the Port to be used for SMTP.
Settings	1-65535
Default values	25

■ SMTP Encryption

Description	Enter the SMTP Encryption method.
Settings	<ul style="list-style-type: none"> • OFF • TLS • STARTTLS
Default values	OFF

6.5.2. Authentication Settings



■ SMTP Authentication

Description	Enable SMTP authentication.
Settings	<ul style="list-style-type: none"> • OFF • ON
Default values	OFF

■ Mode

Description	Select the SMTP encryption mode.
Settings	<ul style="list-style-type: none"> • LOGIN • CRAM-MD5
Default values	LOGIN

■ ID

Description	Select the ID for SMTP authentication.
Settings	1-64 alphanumeric characters
Default values	-

■ Password

Description	Select the password for SMTP authentication.
Settings	1-64 alphanumeric characters
Default values	-

Point

"■Password" will be displayed as "●●●●" on the screen.

6.5.3. E-mail Addresses

E-mail Addresses	
Destination 1:	<input type="text"/> 1-64 alphanumeric characters
Destination 2:	<input type="text"/> 1-64 alphanumeric characters
Destination 3:	<input type="text"/> 1-64 alphanumeric characters
Source Address:	<input type="text"/> 1-64 alphanumeric characters

■ Destination 1

Description	Set the e-mail address.
Settings	1-64 alphanumeric characters
Default values	-

■ Destination 2

Description	Set the e-mail address.
Settings	1-64 alphanumeric characters
Default values	-

■ Destination 3

Description	Set the e-mail address.
Settings	1-64 alphanumeric characters
Default values	-

■ Source Address

Description	Set the source e-mail address.
Settings	1-64 alphanumeric characters
Default values	-

6.5.4. E-mail Event Trigger

Set up which event triggers sending an e-mail message for each address in "■Destination 1 through ■Destination 3" ➤ [P.98](#).

E-mail Event Trigger

Event	Destination Address		
	(1)	(2)	(3)
Normal call	Disable ▼	Disable ▼	Disable ▼
Priority call	Disable ▼	Disable ▼	Disable ▼
Urgent call	Disable ▼	Disable ▼	Disable ▼
Door Release Activated	Disable ▼	Disable ▼	Disable ▼
Call Failed	Disable ▼	Disable ▼	Disable ▼
Error Occurred	Disable ▼	Disable ▼	Disable ▼
Station Restart	Disable ▼	Disable ▼	Disable ▼
Periodic Log Transmission	Disable ▼	Disable ▼	Disable ▼
Periodic Log Transmit Time	00 ▼ Hour 00 ▼ Minute	00 ▼ Hour 00 ▼ Minute	00 ▼ Hour 00 ▼ Minute
Periodic Log Transmit Interval	1 day ▼	1 day ▼	1 day ▼

[UTF-8] used for 'Subject' encoding; the subject may be garbled depending on mail server.

Event	Subject Text 1-64 alphanumeric characters
Normal call	<input type="text"/>
Priority call	<input type="text"/>
Urgent call	<input type="text"/>
Door Release Activated	<input type="text"/>
Call Failed	<input type="text"/>
Error Occurred	<input type="text"/>
Station Restart	<input type="text"/>
Periodic Log Transmission	<input type="text"/>

■ Normal call

Description	An e-mail message will be sent when a normal call is made.
Settings	<ul style="list-style-type: none"> • Enable • Disable
Default values	Disable

■ Priority call

Description	An e-mail message will be sent when a priority call is made.
Settings	<ul style="list-style-type: none"> • Enable • Disable
Default values	Disable

■ Urgent call

Description	An e-mail message will be sent when an urgent call is made.
Settings	<ul style="list-style-type: none">• Enable• Disable
Default values	Disable

■ Door Release Activated

Description	An e-mail message will be sent when the door release is activated.
Settings	<ul style="list-style-type: none">• Enable• Disable
Default values	Disable

■ Call Failed

Description	An e-mail message will be sent when a call fails.
Settings	<ul style="list-style-type: none">• Enable• Disable
Default values	Disable

■ Error Occurred

Description	An e-mail message will be sent when a data communication error occurs.
Settings	<ul style="list-style-type: none">• Enable• Disable
Default values	Disable

■ Station Restart

Description	An e-mail message will be sent when the station is restarted.
Settings	<ul style="list-style-type: none">• Enable• Disable
Default values	Disable

■ Periodic Log Transmission

Description	Periodic Log will be sent via e-mail.
Settings	<ul style="list-style-type: none">• Enable• Disable
Default values	Disable

■ Periodic Log Transmit Time

Description	Set time of day to send the log via e-mail.
Settings	From 00:00 to 23:59
Default values	00:00

■ Periodic Log Transmit Interval

Description	Set how often the log will be sent via e-mail.
Settings	Every 1-7 days
Default values	1 day

■ Subject Text

Description	Set the Subject Text of e-mail message for each trigger.
Settings	1-64 alphanumeric characters
Default values	-

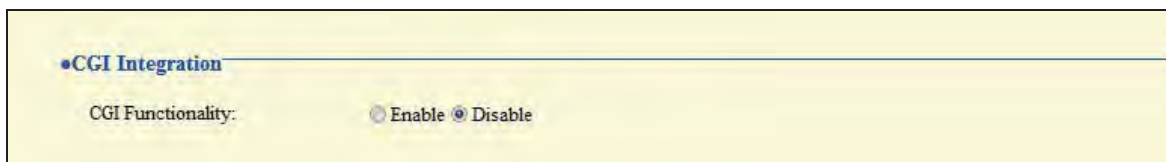
Caution

UTF-8 encoding is used for the "■Subject Text." Depending on the e-mail client, the characters may appear incorrectly.

6.6. CGI Integration

CGI integration allows 3rd party hardware / software to control basic functionality of the IX devices.

For details of CGI functionality, contact the local Aiphone representative.



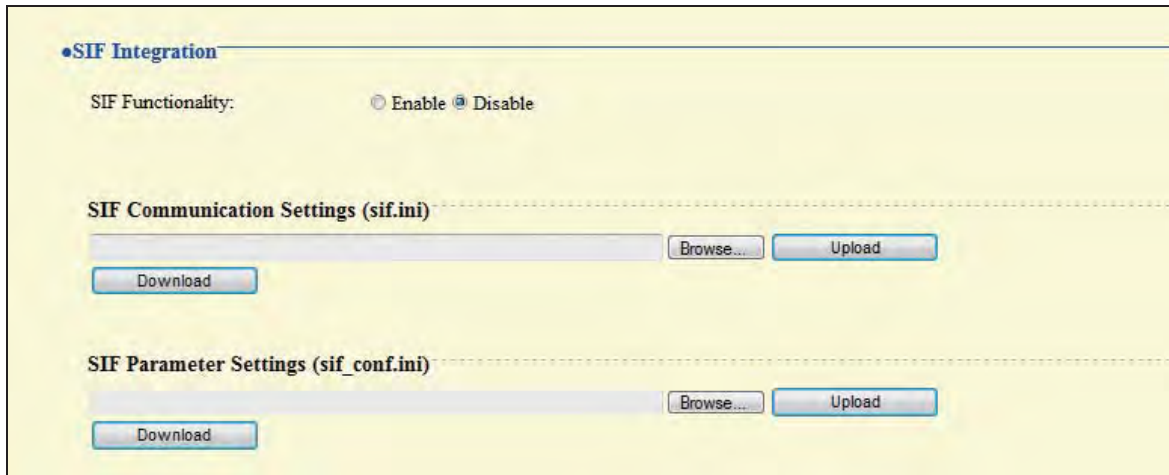
■ CGI Functionality

Description	Choose to enable CGI functionality.
Settings	<ul style="list-style-type: none"> • Enable • Disable
Default values	Disable

6.7. SIF Integration

SIF protocol allows event data to be sent directly to 3rd party hardware / software.

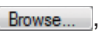

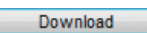
For details of SIF Functionality, contact the local Aiphone representative.



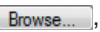
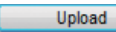
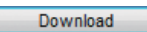
■ SIF Functionality

Description	Choose to enable SIF functionality.
Settings	<ul style="list-style-type: none"> • Enable • Disable
Default values	Disable

6.7.1. SIF Communication Settings (sif.ini)

Description	Upload/Download SIF communication settings. Upload: Click  , select a file, and then click  . Download: Click  to save the file.
Settings	-
Default values	-

6.7.2. SIF Parameter Settings (sif_conf.ini)

Description	Upload/Download SIF parameter settings. Upload: Click  , select a file, and then click  . Download: Click  to save the file.
Settings	-
Default values	-

7. Transfer Settings

7.1. Absent Transfer Settings



■ Absent Transfer

Description	Enable absent transfer feature. "■Transfer to Station Number" must be set before this setting can be applied. Absent transfer: A call can be automatically transferred to another station when absent.
Settings	<ul style="list-style-type: none"> • Disable: Absent transfer is disabled. • Enable: Absent transfer is enabled. When this feature is enabled, Transfer indicator stays on.
Default values	Disable

■ Transfer to Station Number

Description	Set the transfer destination.
Settings	3-5 digits
Default values	-

Caution

The "Transfer to Station Number" can be set to a door station, however only an individual master to master call can be transferred. Door station calls cannot be transferred to another door station.

7.2. Delay Transfer Settings

Delay Transfer Settings

Delay Transfer: ☒ Disable ☐ Enable

Delay Time [sec]: 1-300sec

Transfer to Station Number: 3-5 digits

■ Delay Transfer

Description	<p>Enable delay transfer feature.</p> <p>"■Transfer to Station Number" must be set before this setting can be applied.</p> <p>Delay transfer: A call can be automatically transferred to another station after a certain period of time (Delay Time) elapses.</p>
Settings	<ul style="list-style-type: none"> • Disable: Delay transfer is disabled. • Enable: Delay transfer is enabled. Transfer indicator remains off.
Default values	Disable

■ Delay Time [sec] ◆

Description	Set the Delay Time for transferring a call when Delay Transfer is enabled.
Settings	1-300 sec (by 1 sec)
Default values	30

■ Transfer to Station Number

Description	Set the destination station (Station Number) for a delayed transfer.
Settings	3-5 digits
Default values	-

Caution

The "Transfer to Station Number" can be set to a door station, however only an individual master to master call can be transferred. Door station calls cannot be transferred to another door station.

7.3. Transfer Schedule Settings

•Transfer Schedule Settings

Transfer Schedule: ☒ Disable ☐ Enable

Transfer to Station Number: 3-5 digits

Weekly Schedule

Day	Start Time	End Time
Sunday	▼ Hour ▼ Minute	▼ Hour ▼ Minute
Monday	▼ Hour ▼ Minute	▼ Hour ▼ Minute
Tuesday	▼ Hour ▼ Minute	▼ Hour ▼ Minute
Wednesday	▼ Hour ▼ Minute	▼ Hour ▼ Minute
Thursday	▼ Hour ▼ Minute	▼ Hour ▼ Minute
Friday	▼ Hour ▼ Minute	▼ Hour ▼ Minute
Saturday	▼ Hour ▼ Minute	▼ Hour ▼ Minute

■ Transfer Schedule

Description	<p>Enable transfer schedule feature.</p> <p>"■Transfer to Station Number" must be set before this setting can be applied.</p> <p>Transfer schedule: A call can be automatically transferred to another station when a call comes in during the time period set up in the weekly schedule.</p>
Settings	<ul style="list-style-type: none"> • Disable: Transfer schedule feature is disabled. • Enable: Transfer schedule feature is enabled. Transfer indicator remains off.
Default values	Disable

■ Transfer to Station Number

Description	Set the destination station (Station Number) for a scheduled transfer.
Settings	3-5 digits
Default values	-

Caution

The "Transfer to Station Number" can be set to a door station, however only an individual master to master call can be transferred. Door station calls cannot be transferred to another door station.

7.3.1. Weekly Schedule

■ From Sunday through Saturday

Description	Set the schedule for transfer schedule feature. A call is transferred when placed during this time.
Settings	Each day of the week 00:00-23:59 * Depending on how the time is chosen, the time period may cover two days of the week. Example: Monday 22:00-8:00 This means the transferring is enabled for the time period between 22:00 Monday and 8:00 Tuesday.
Default values	-

8. Station Hardware Settings

8.1. Speed Dial Button Settings

•Speed Dial Button Settings

Destination Assignment

Button #	Mode Selection	Group Number <small>01-99</small>	Station Number <small>3-5 digits</small>	Priority
1				
2				
3				
4				
5				
6				

■ Mode Selection

Description	Select the calling mode to be assigned to Speed Dial buttons.
Settings	<ul style="list-style-type: none"> • Blank: Not used • Group Call • Individual Call • Group Page • All Page
Default values	Blank

■ Group Number

Description	When selecting "Group Call" or "Group Page" in "■Mode Selection," a group number must be set.
Settings	01-99
Default values	-

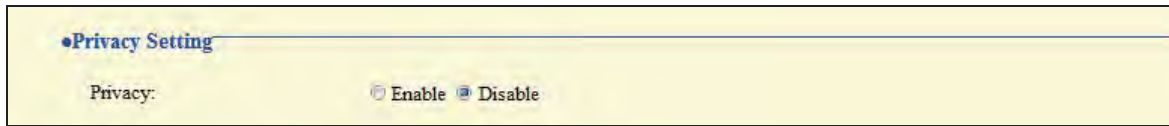
■ Station Number

Description	When selecting "Individual Call" in "■Mode Selection," a group number must be set.
Settings	3-5 digits
Default values	-

■ Priority

Description	Select the Priority to be assigned to each Speed Dial button.
Settings	<ul style="list-style-type: none"> • Normal • Priority (When selecting "Group Page" or "All Page" in "■Mode Selection," this option cannot be selected.) • Urgent
Default values	-

8.2. Privacy Setting



■ Privacy

Description	<p>Enable Privacy.</p> <p>Activate by pressing "PRIVACY" button on Master Station.</p> <p>Privacy: This feature prevents outgoing audio from being heard when Automatic Answering feature is enabled.</p>
Settings	<ul style="list-style-type: none"> • Enable • Disable
Default values	Disable

8.3. Volume Settings



8.3.1. Volume Settings

■ Handset Transmit Volume

Description	Set the transmit volume of the handset during communication or paging.
Settings	1-10
Default values	10

■ Handset Receive Volume

Description	Set the receive volume of the handset during communication.
Settings	1-10
Default values	6

■ Hands-free Transmit Volume

Description	Set the hands-free transmit volume during communication or paging.
Settings	1-10
Default values	10

■ Hands-free Receive Volume

Description	Set the hands-free receive volume during communication or paging.
Settings	1-10
Default values	6

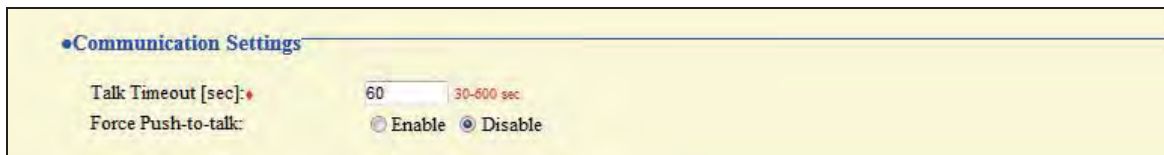
■ Ringtone Volume

Description	Set the tone volume (ringtone, pretone).
Settings	0: Mute, 1-10
Default values	6

■ Button Feedback Tone

Description	Enable tone when a button is pressed.
Settings	<ul style="list-style-type: none"> • Enable • Disable
Default values	Disable

8.4. Communication Settings



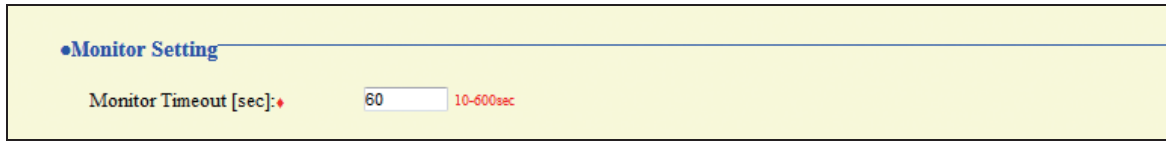
■ Talk Timeout [sec] ♦

Description	Set the talk timeout.
Settings	30-600 sec (by 1 sec)
Default values	60

■ Force Push-to-talk

Description	Force Push-to-talk.
Settings	<ul style="list-style-type: none"> • Enable • Disable
Default values	Disable

8.5. Monitor Setting



■ Monitor Timeout [sec] ◆

Description	Set the Monitor Timeout.
Settings	10-600 sec (by 1 sec)
Default values	60

8.6. Master Station Display Settings



■ Brightness

Description	Set the brightness of the monitor.
Settings	1-10
Default values	Brightness 6

■ Time Format

Description	Select the time format for the display on the station.
Settings	<ul style="list-style-type: none"> • mm/dd/yyyy (12h) • mm/dd/yyyy (24h) • dd/mm/yyyy (12h) • dd/mm/yyyy (24h) • yyyy/mm/dd (12h) • yyyy/mm/dd (24h)
Default values	mm/dd/yyyy (12h)

■ Standby LED State

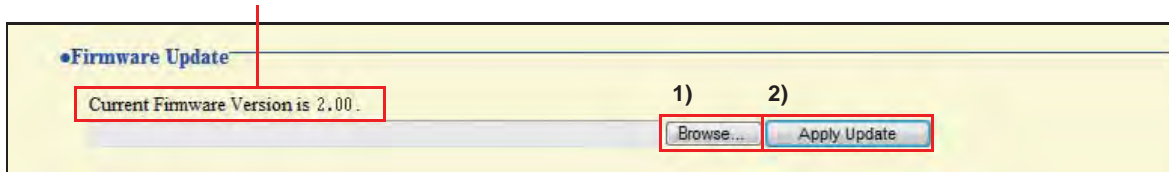
Description	Set to keep the Status indicator on while the station is in standby.
Settings	<ul style="list-style-type: none"> • ON • OFF
Default values	ON

9. Maintenance

9.1. Firmware Update

Access "http://www.aiphone.net/" and download the latest version of the firmware.

The current version of the firmware is shown.



How to update the firmware

- 1) Click and select the firmware to be uploaded.
- 2) Click .

Caution

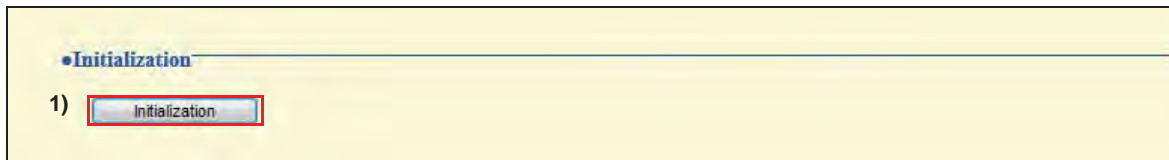
- If power is turned off while updating the firmware, the station may malfunction.
- The station will be inoperable while updating the firmware.
- When the firmware is updated, the station will automatically restart.

Point

If updating fails, repeat the procedure.

9.2. Initialization

When initializing the station, all settings go back to the default values, and the system log and incoming / outgoing call history are erased.

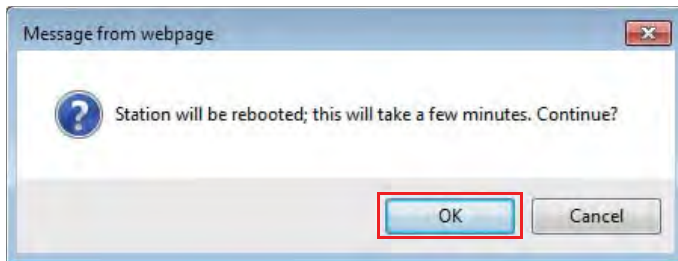


How to initialize the station

1) Click .

2) Click .

Click  to cancel the initialization.



Caution

- In some cases, it may take around 10 minutes for the station to start up after initialization.
The station will be inoperable until restarting is completed.
- If initialization fails, the message "Initialization failed" will be displayed, and the status indicator will flash in orange (Device failure). If this happens, retry the procedure.

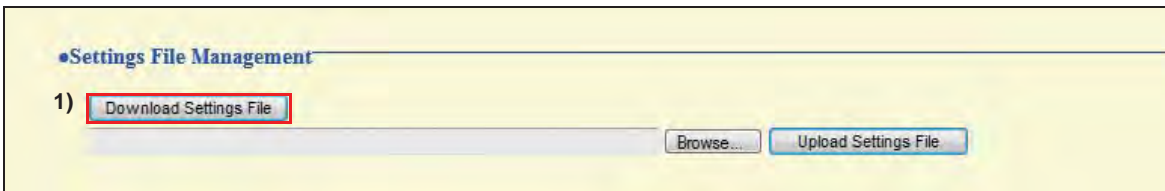
9.3. Settings File Management

Save the setting file so it can be used to restore the system.

Important

- When a setting is changed, store the settings file. With a saved setting file, the settings of a replaced station can easily be restored.
- Sound data registered in "3.4. Custom Sound Registry" ➤ [P.81](#), SIF uploaded in "6.7. SIF Integration" ➤ [P.103](#) and the language setting for the display on the Master Station cannot be stored in this procedure. Save the data separately.

How to download the Settings File



1) Click [Download Settings File](#).

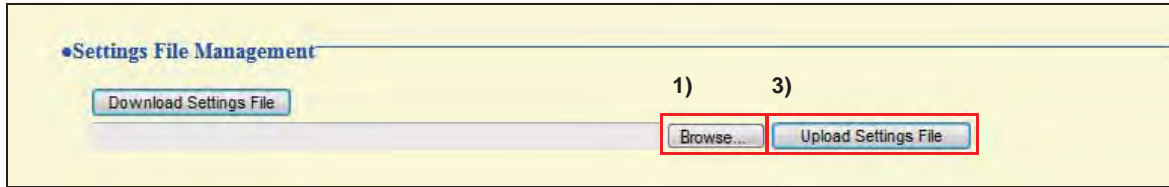
2) Click [Save](#).



3) Specify the location to store the file.
The Settings File will be given the name "GetConfig." Change the file name as necessary and save it.

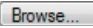
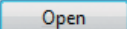
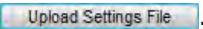
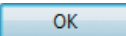
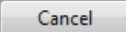
Configuring the station

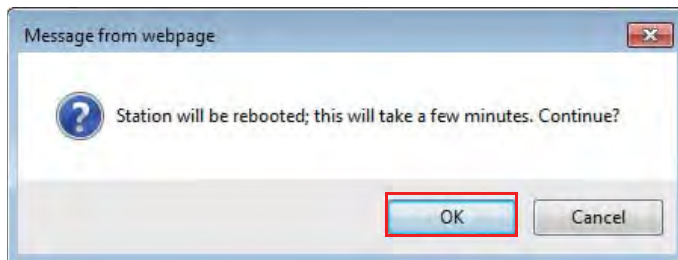
How to upload the Settings File



Important

Sound data, SIF data, and language for the display on the Master Station cannot be restored in this procedure. Upload the files in "3.4. Custom Sound Registry" ➤ [P.81](#) or "6.7. SIF Integration" ➤ [P.103](#). For setting up the LANGUAGE for the display on the Master Station, refer to IX Master Station Operation Manual.

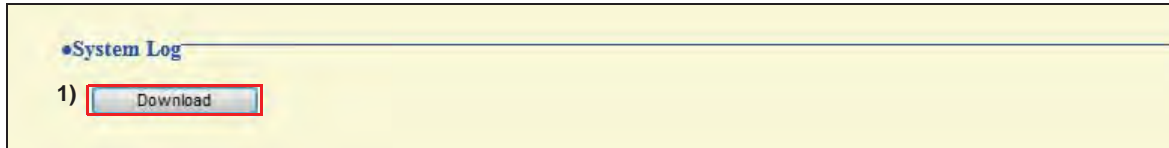
- 1) Click .
 - 2) Select the setting file to be uploaded, and click .
 - 3) Click .
 - 4) Click .
- Click  to cancel the upload.



9.4. System Log

Obtain the System Log to view the operation of the station.

The log is mainly used for after-sales servicing.



How to store the System Log file

1) Click .

2) Click .



3) Specify the location to store the file.

The data file will be given the name "systemlog.txt." Change the file name as necessary and save it.