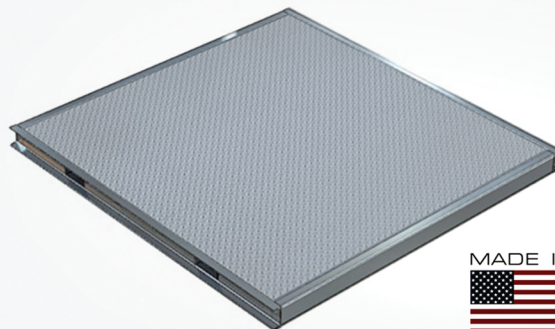




PORTABLE TURNSTILE BASE PLATE

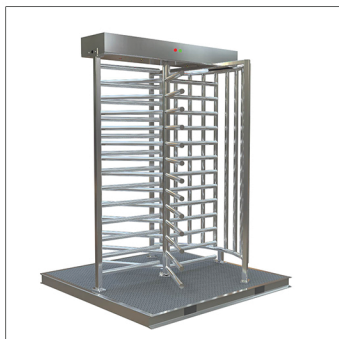


MADE IN

 U. S. A.

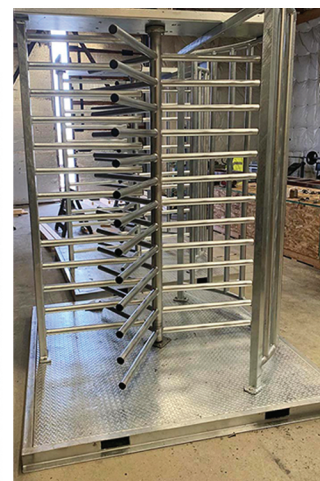
The Portable Turnstile Base Plate is an Industrial Strength Steel base plate for one or more turnstiles and gates. The base is made to order with pockets for portability by forklift. Pockets on the corners for lifting by crane and accessories such as foldable ramps are also available. This base plate allows you to easily relocate your secure access point whenever needed.

We can provide a turnstile on a portable base or provide the turnstile and the portable base separately. If separate, the turnstile will need to be installed onto the base on-site.



Bases are available for all of our turnstiles.
 Portable base sizes:

- 66" x 72"** (5.5 x 6') for a 27" Passage Single Turnstile
- 72" x 72"** (6 x 6') for a 30" Passage Single Turnstile
- 84" x 84"** (7 x 7') for a 36" Passage Single Turnstile
- 90" x 90"** (7.5 x 7.5') for a 39" Passage Single Turnstile
- 108" x 96"** (9' x 8') for a 48" Passage Single Turnstile
- 120" x 72"** (10 x 6') for a 30" Passage Tandem Turnstile
- 45" x 72"** (3.75 x 6') for a 36" Passage ADA Gate



Portable Turnstile Base Plates
 with Full Height Single Turnstiles and ADA Gates