



Database Access

Database Access gives you ability to run different reports in [Entrapass Global Edition](#) and [Entrapass Global Edition hatatrix](#) using a variety of tools (the list of tools that can be used can be found under Sybase web site).

Kantech will support on Crystal Reports as a tool.

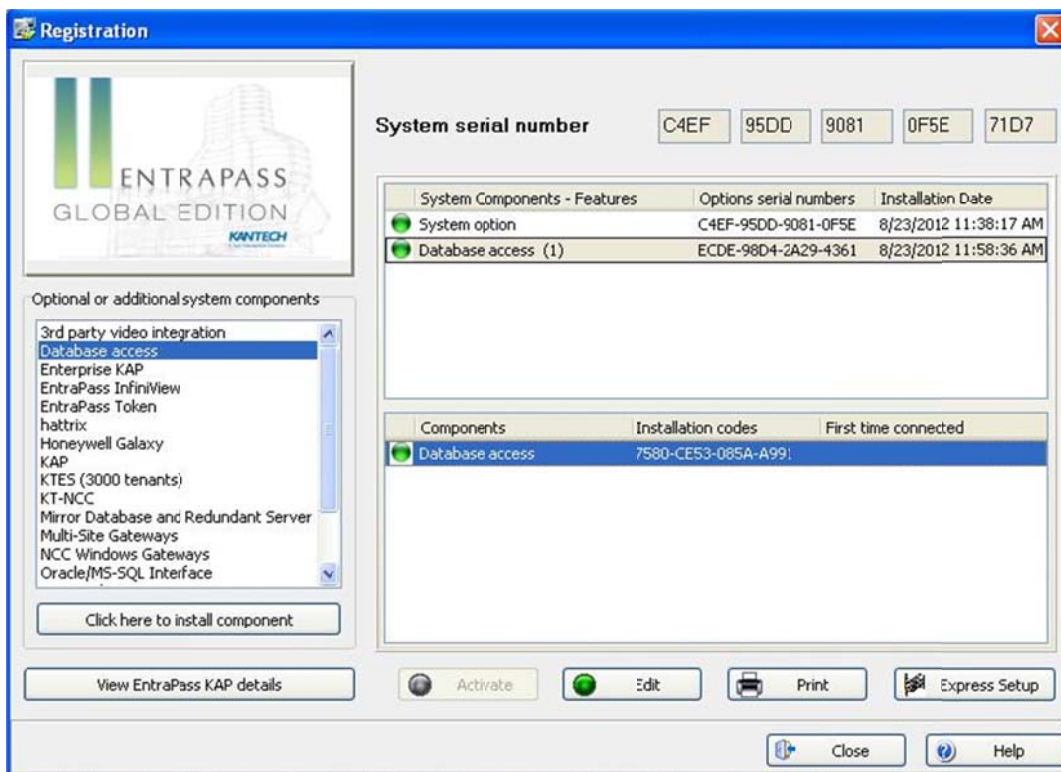
A Crystal Reports Driver will be included in EPG 5.02 installation folder (will be installed at the Crystal Reports machine to interface with the Sybase database).

The Database Access feature is a free option (**[one and unique option can be activated in the system](#)**) included in EPG 5.02, that needs to be activated in the software.

Database Access **cannot** be installed in the same machine as the Entrapass (because Database Access acts as a Mirror Database).

Installation steps:

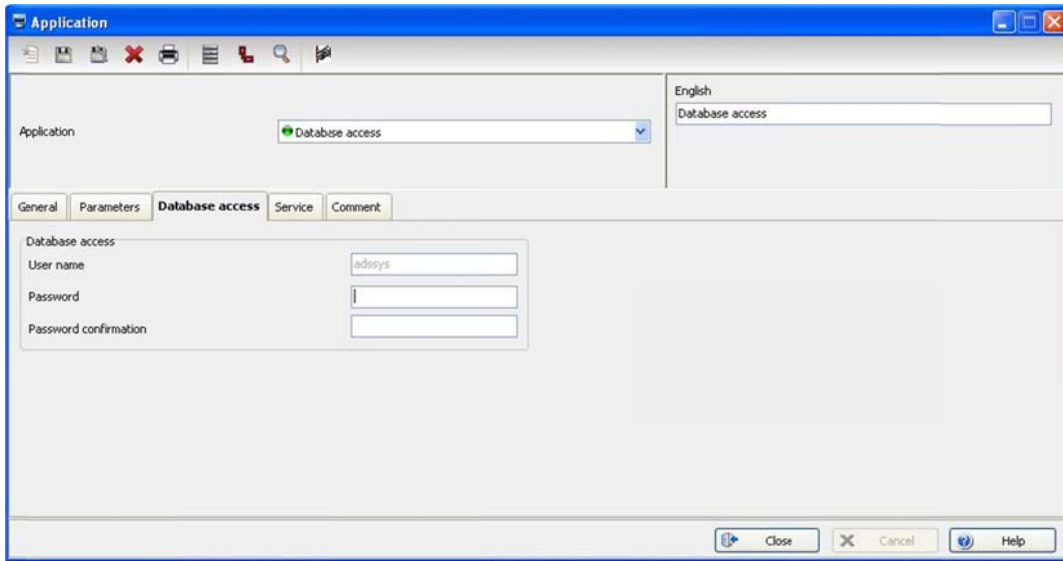
- 1- Activate the Database Access option:



2- After you activate the option in EPGE 5.02, you need to complete the following steps in Entrapass:

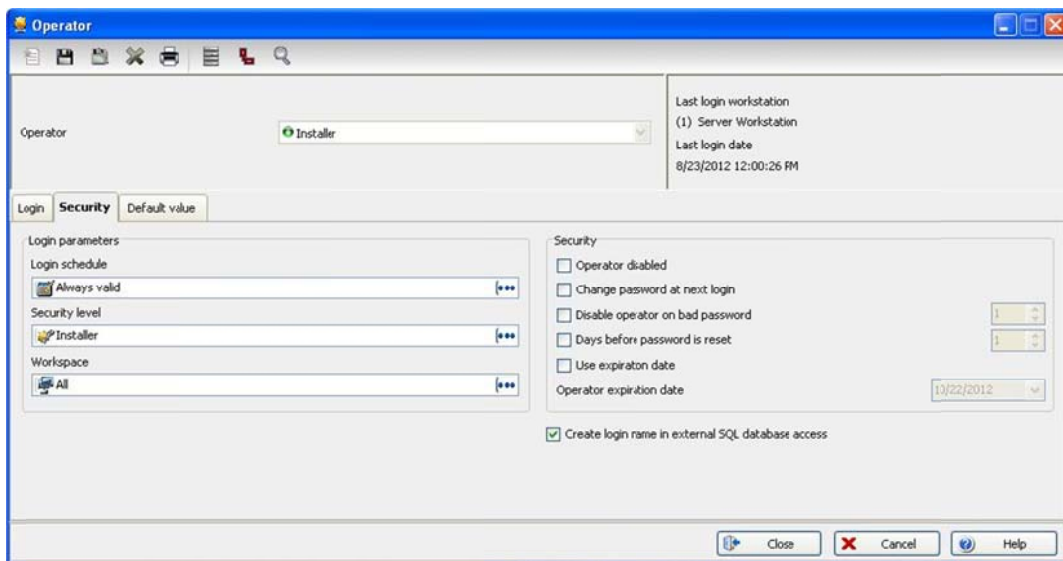
2.1- Under: Devices – Application – Database Access – Database Access, setup a password for the operator **adssys**.

This is the default operator that has full access to the **views** and **tables** in the Sybase Advantage Database and Crystal Reports.

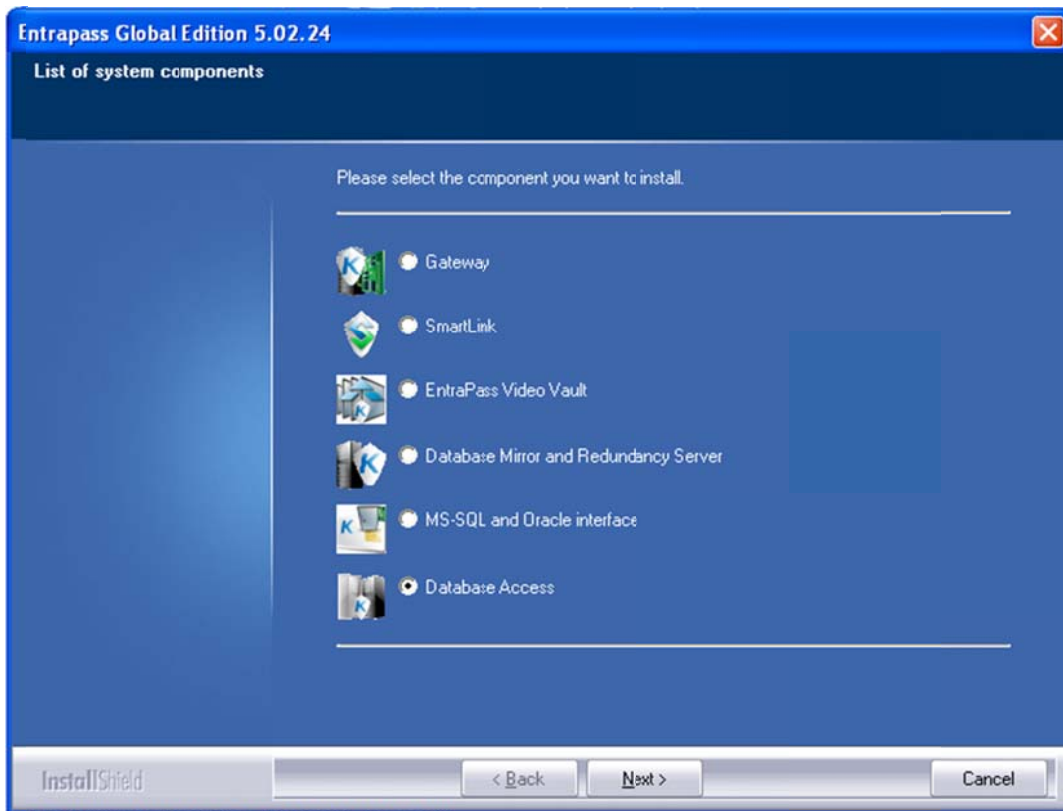
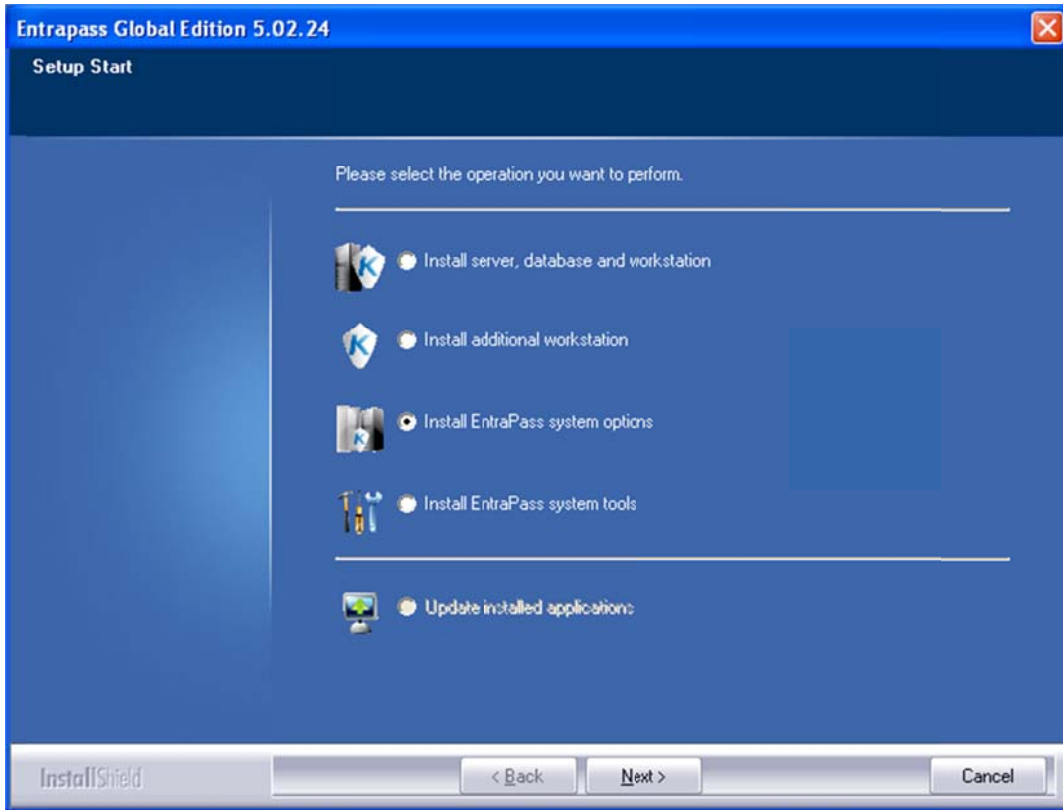


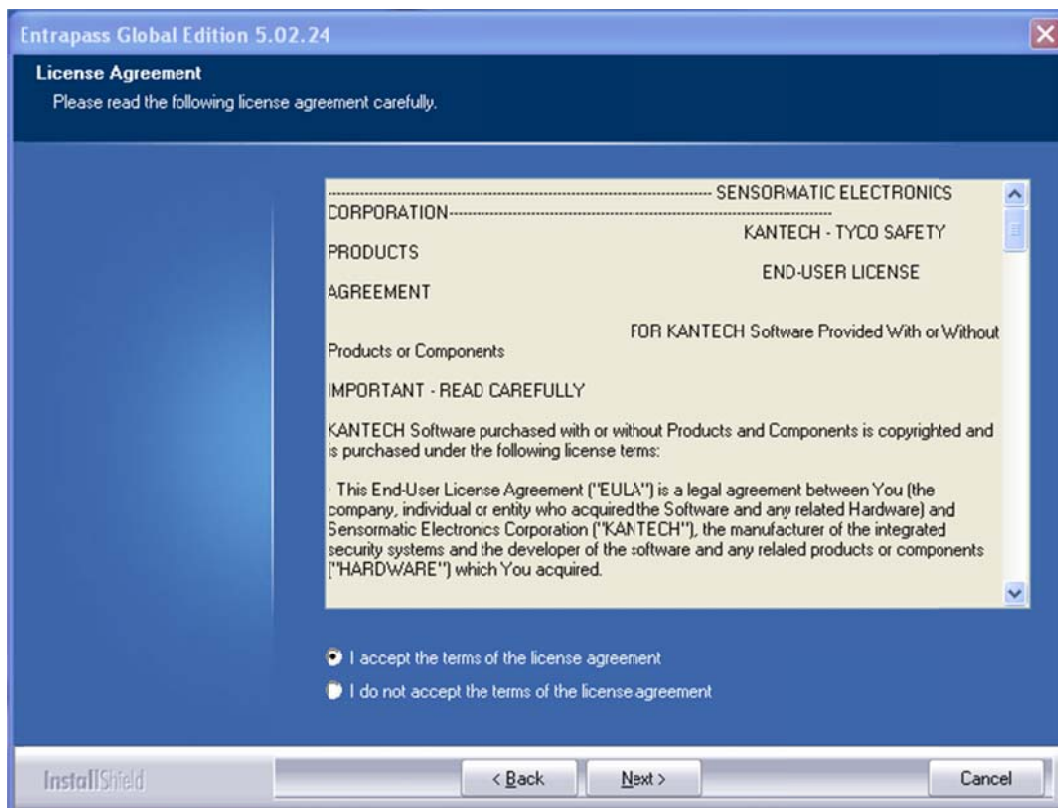
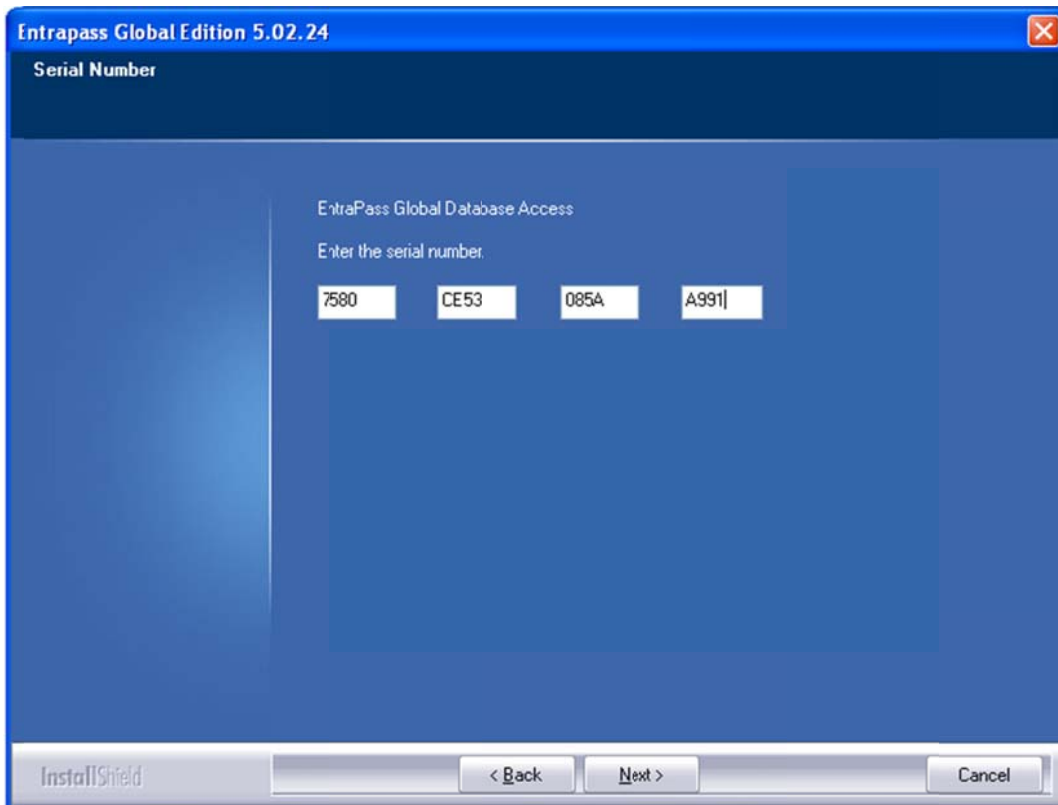
2.2- Under: System – Operator – Security, check the box: Create login name in external SQL database Access.

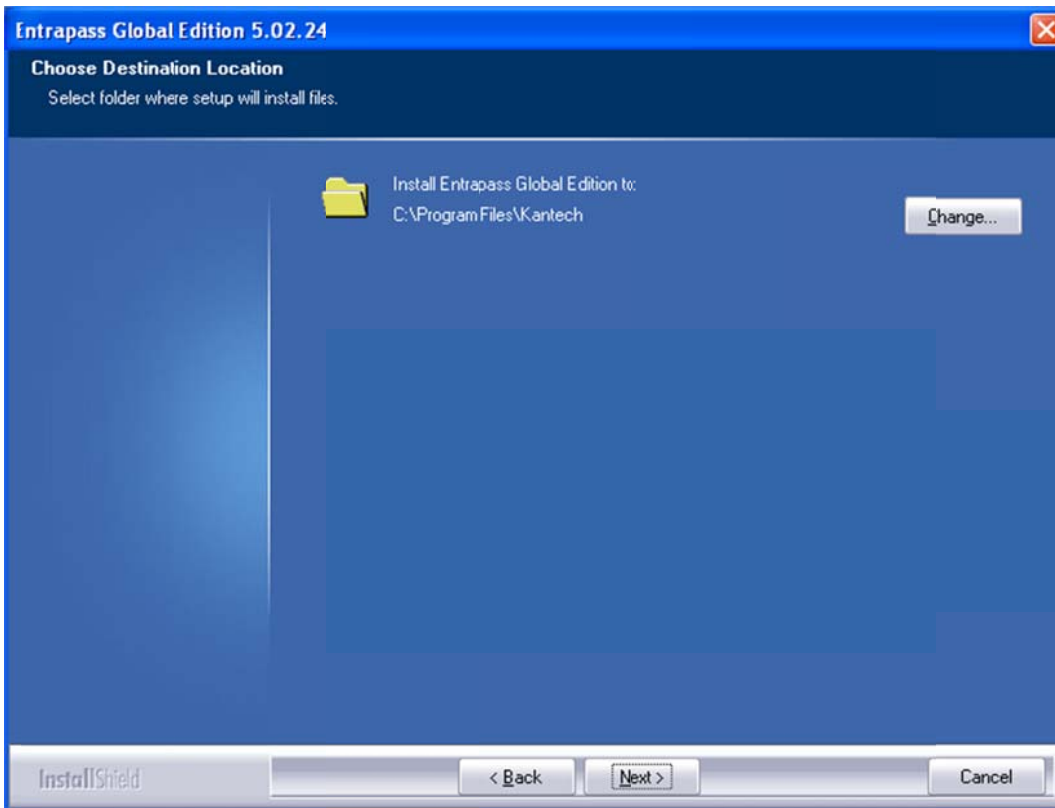
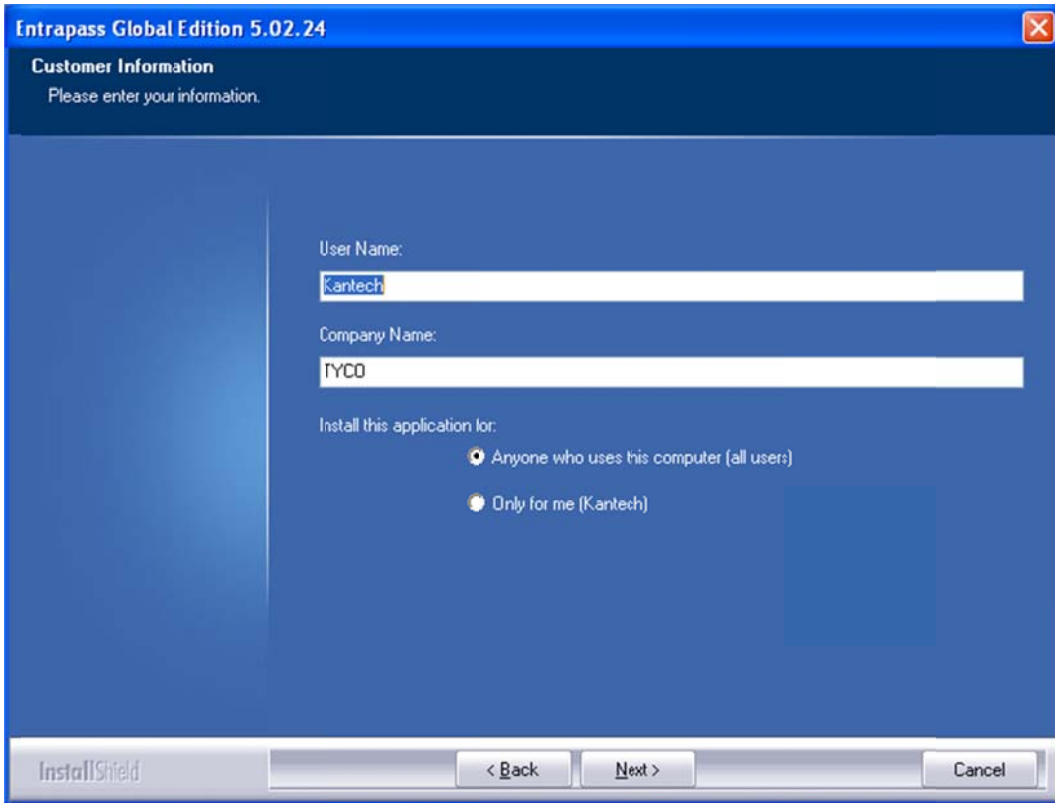
This operation will allow the Entrapass operator to get access to the **views only** in the Data Architect and Crystal Reports.

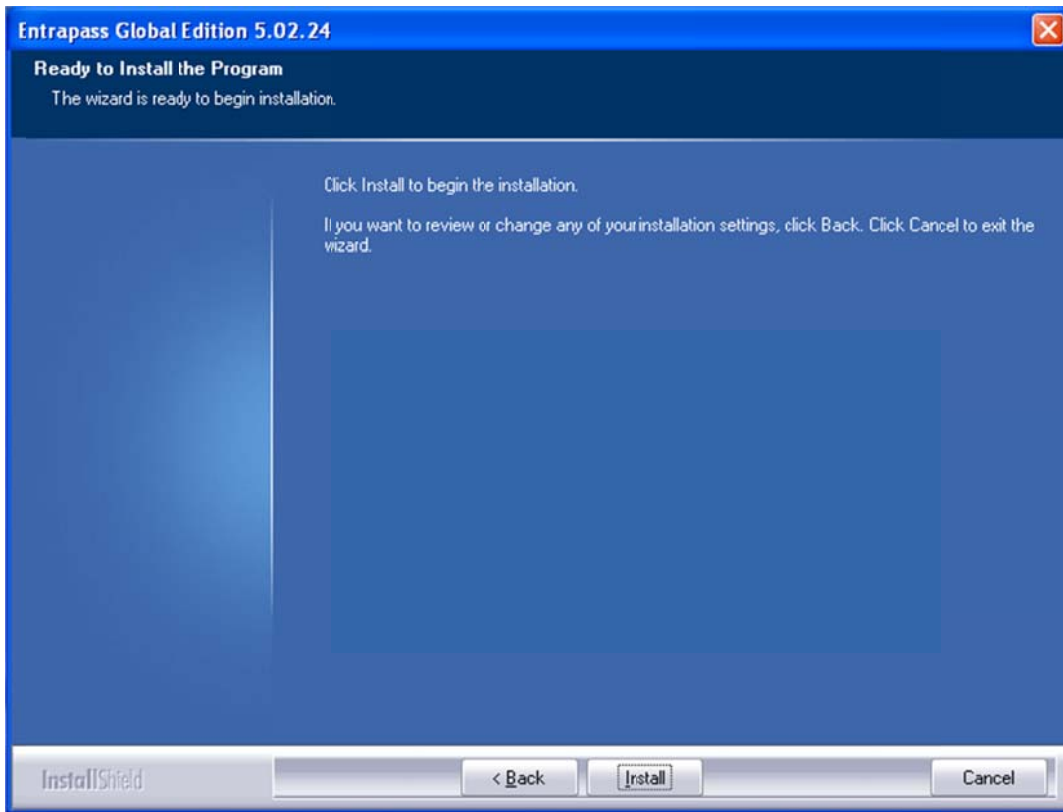


3- Install the Database Access:

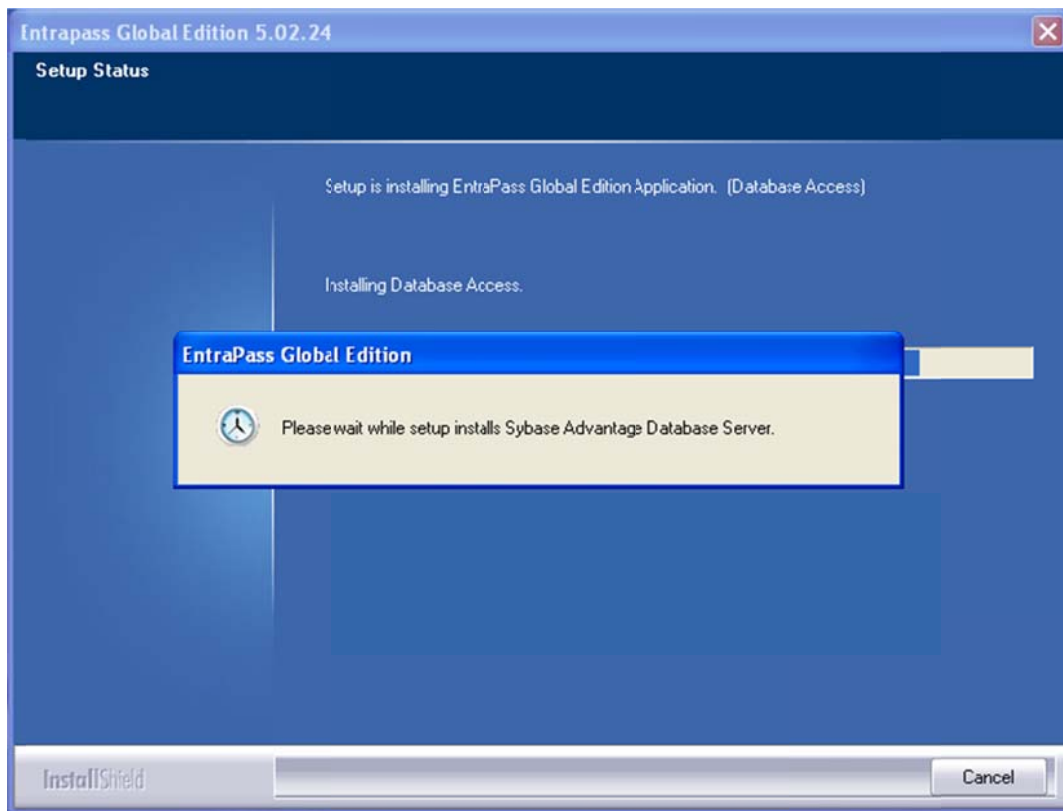




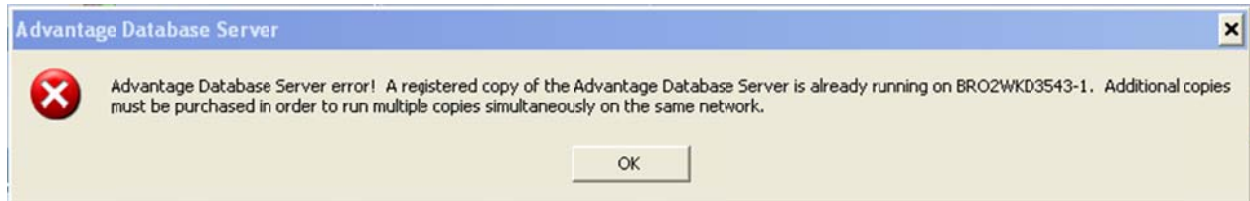




During the Database Access installation, a Sybase Advantage Database Server with a serial number of: 8128375 is installed in background (transparent for the installer).



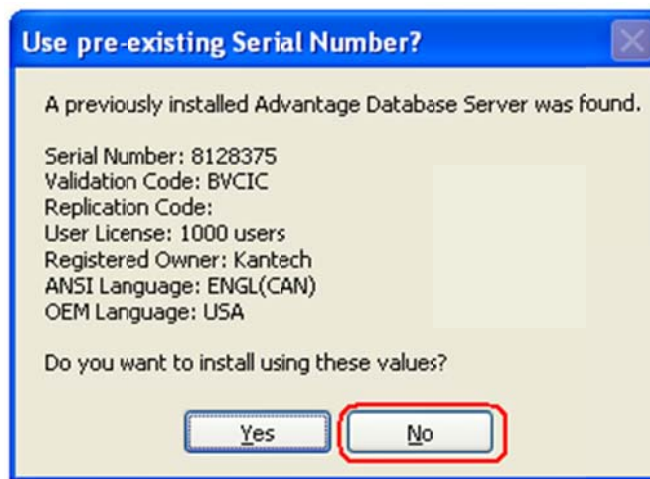
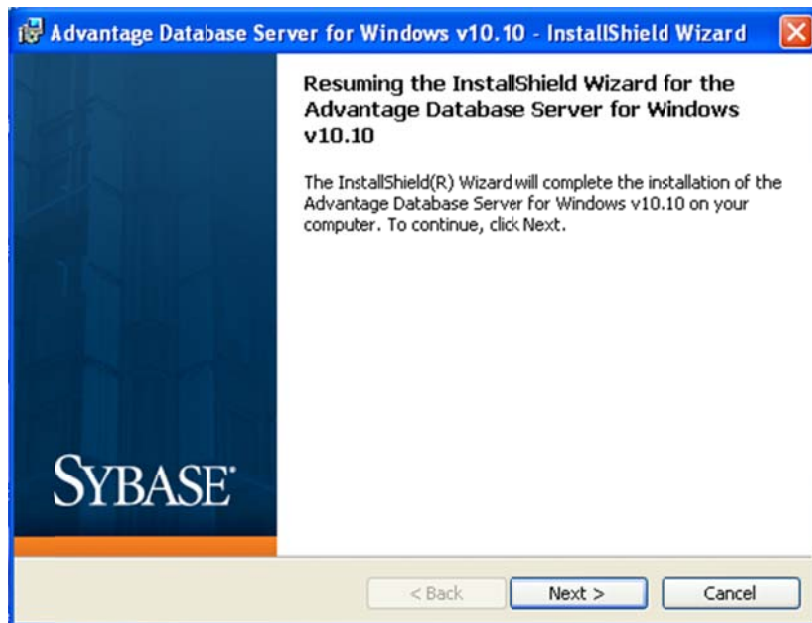
Make sure that there is no other Sybase Advantage Database Server installed in the same network. If yes, you will get the following error.



If the client wants an additional Sybase Advantage Database Server, he needs to buy a new license from Sybase.

Sybase Advantage Database Server needs to be installed manually from the EPGE installation folder:

[Install\adswin_x86_32\Setup.exe](#)



Enter your new Sybase Advantage Database Server license number

Advantage Database Server for Windows v10.10 - InstallShield Wizard

Product Information

Enter the Advantage Serial Number, a Validation Code or an Authorization Code (for evaluation), and the optional Replication Code. The Serial Number, Validation Code, and the optional Replication Code can be found on the Advantage Serial Number ID card.

Serial Number:

I have a product validation code
 I have an evaluation Authorization code

Validation Code:

Replication Code:

Click the following link to request a 30 day evaluation of Advantage Database Server.
http://www.sybase.com/ads10_windows

Cancel < Back Next >

Advantage Database Server for Windows v10.10 - InstallShield Wizard

Product Owner

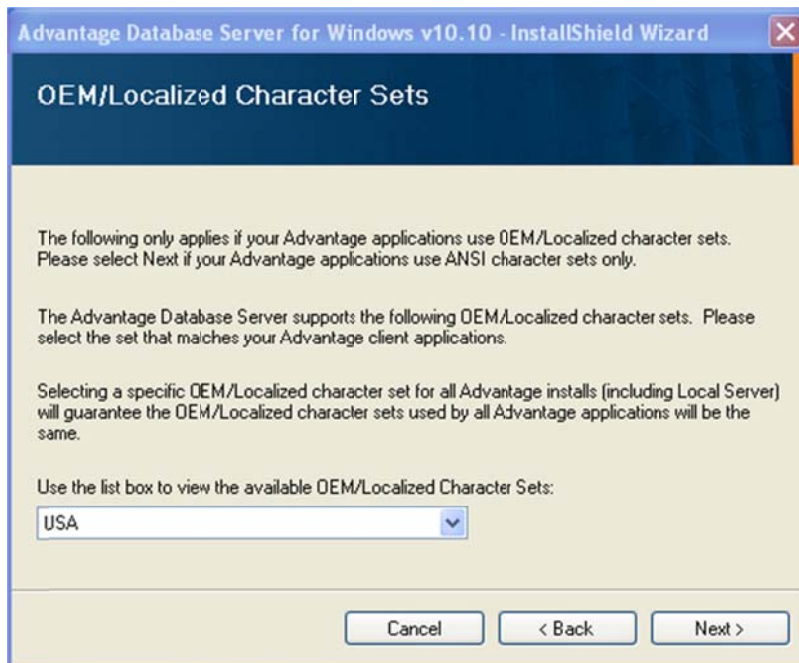
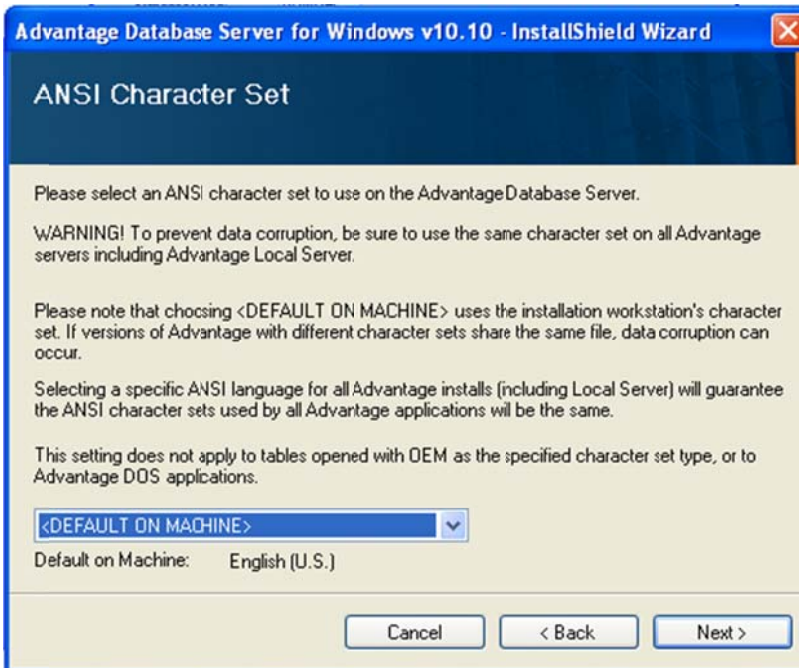
Enter the name of the Registered Owner of the Advantage Database Server.

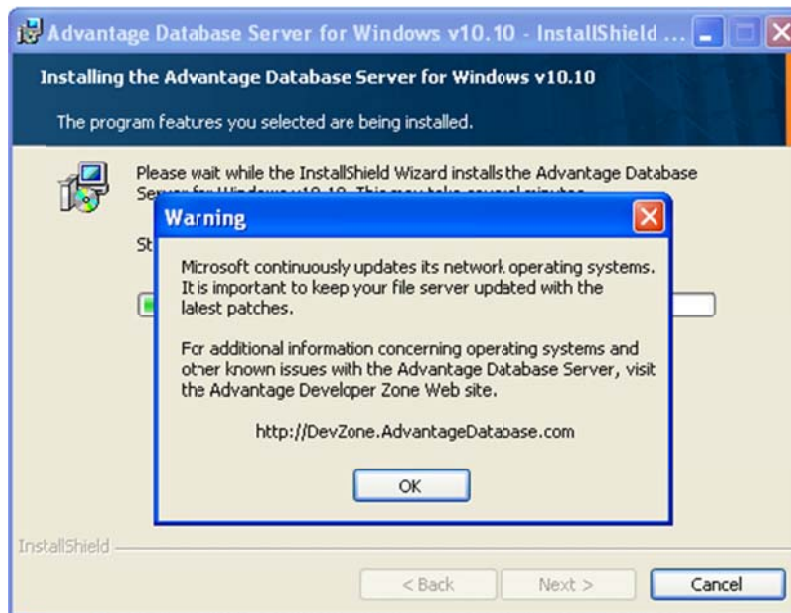
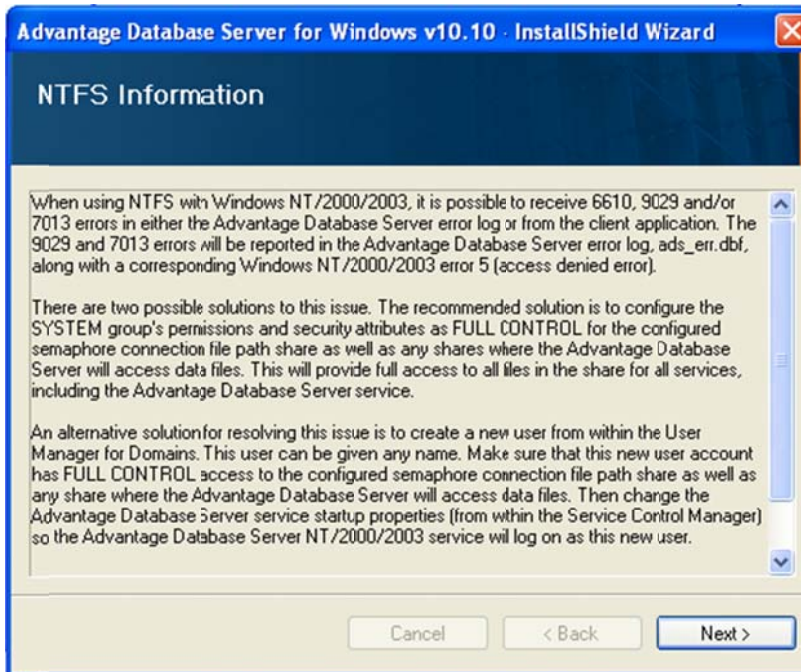
Registered Owner:

Automatic services start every time the system starts. Manual services can be started by a user once logged in.

Automatic Startup Manual Startup

Cancel < Back Next >





Advantage Database Server for Windows v10.10 - InstallShield Wizard

InstallShield Wizard Completed

Advantage Configuration Utility

Service Up Time: 0 Days 0 Hours 2 Minutes 36 Seconds
 Operations Since Started: 1

SYBASE
iAnywhere

Database Info | Installation Info | Configuration Utility

	Current	Max Used	Configured	Rejected
Users:	0	0	>1000	0
Connections:	0	0	1000	0
Work Areas:	0	0	5000	0
Tables:	0	0	150	0
Index Files:	0	0	150	0
Data Locks:	0	0	5000	0
Worker Threads:	0	1	16	

Copyright © 1996-2010

Stop Service **Exit**

Advantage Database Server for Windows v10.10 - InstallShield Wizard

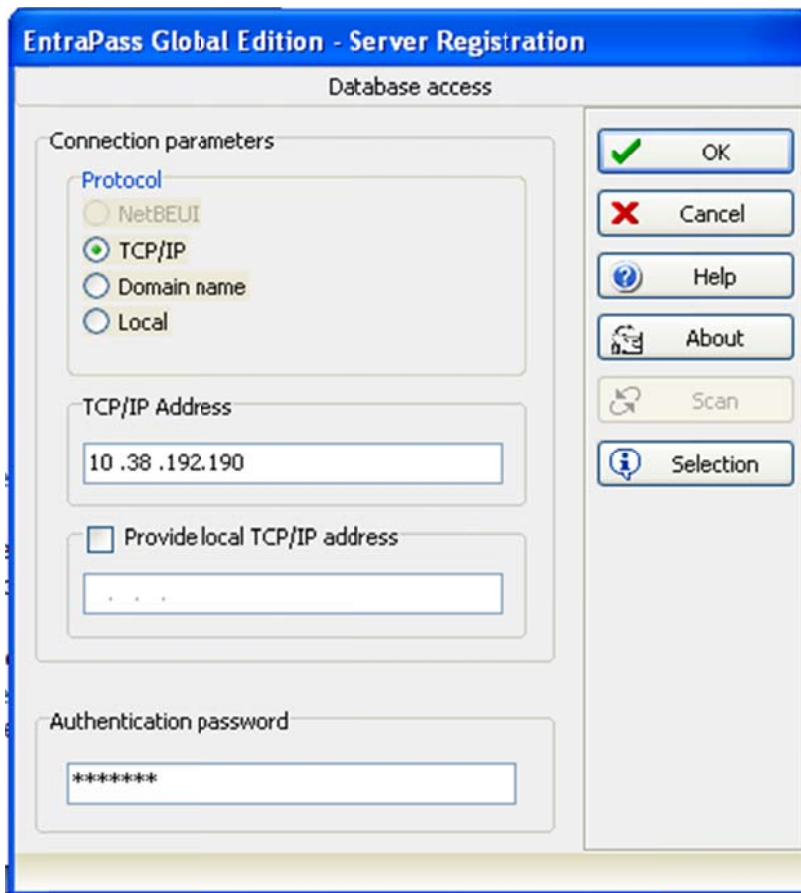
InstallShield Wizard Completed

The InstallShield Wizard has successfully installed the Advantage Database Server for Windows v10.10. Click Finish to exit the wizard.

SYBASE

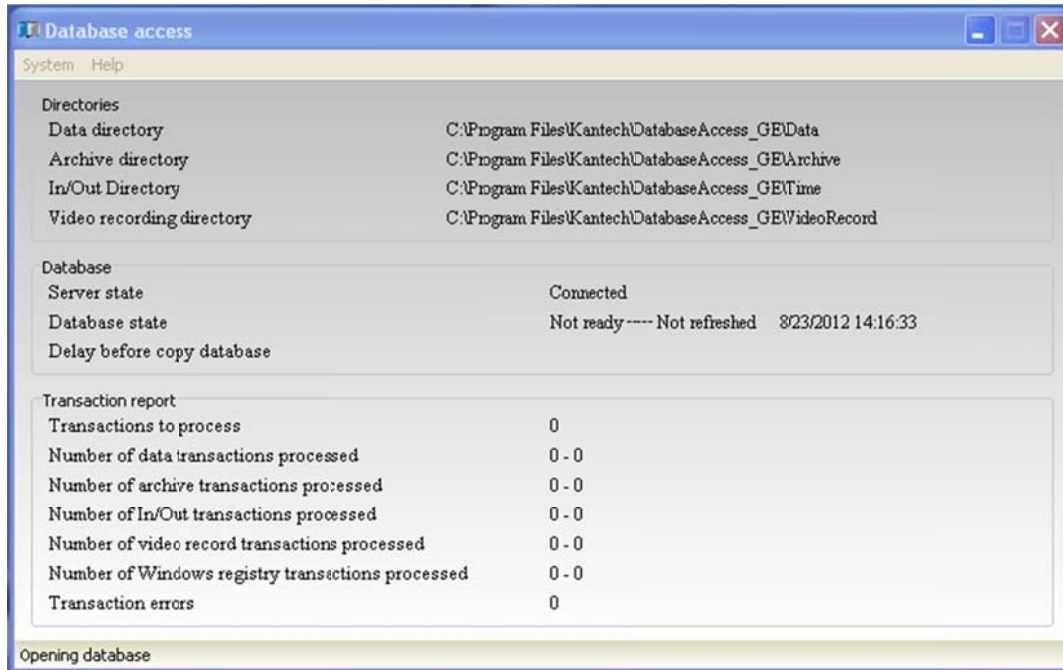
< Back **Finish** Cancel

- 4- The authentication port for the Database Access is **18113**.



A WAN link can be performed by forwarding port **18000** towards the server (valid for applications) and port **18108** towards the Database access PC.

After the Database Access installation, it connects to the server, and makes a complete copy of the database (Archives, IN/OUT, Video events).



After the database is copied from the server, files are merged to one file:

C:\Program Files\kantech\DatabaseAccess_GE\Data

Archives files are merged to one files named: **Archives.adt**

IN/OUT files are merged to one file named: **Time.adt**

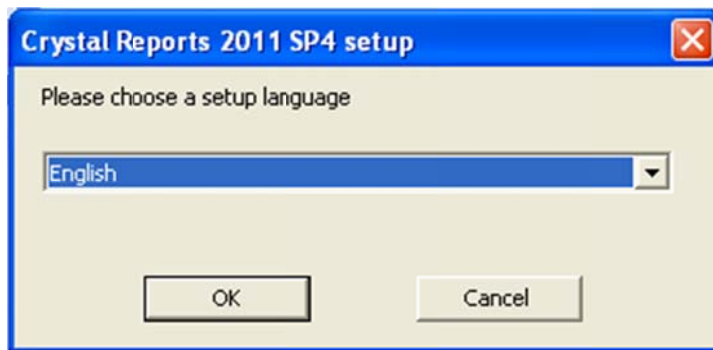
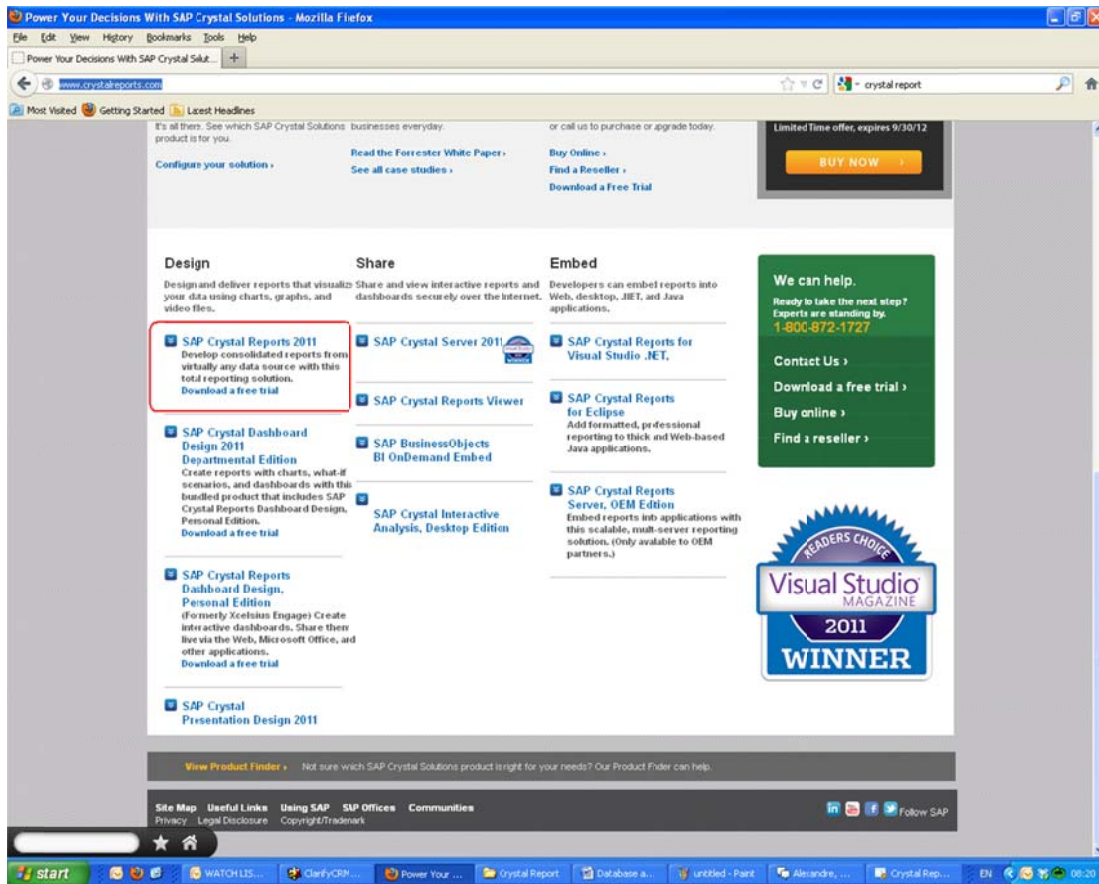
Video events files are merged to one file named: **VideoRecord.adt**

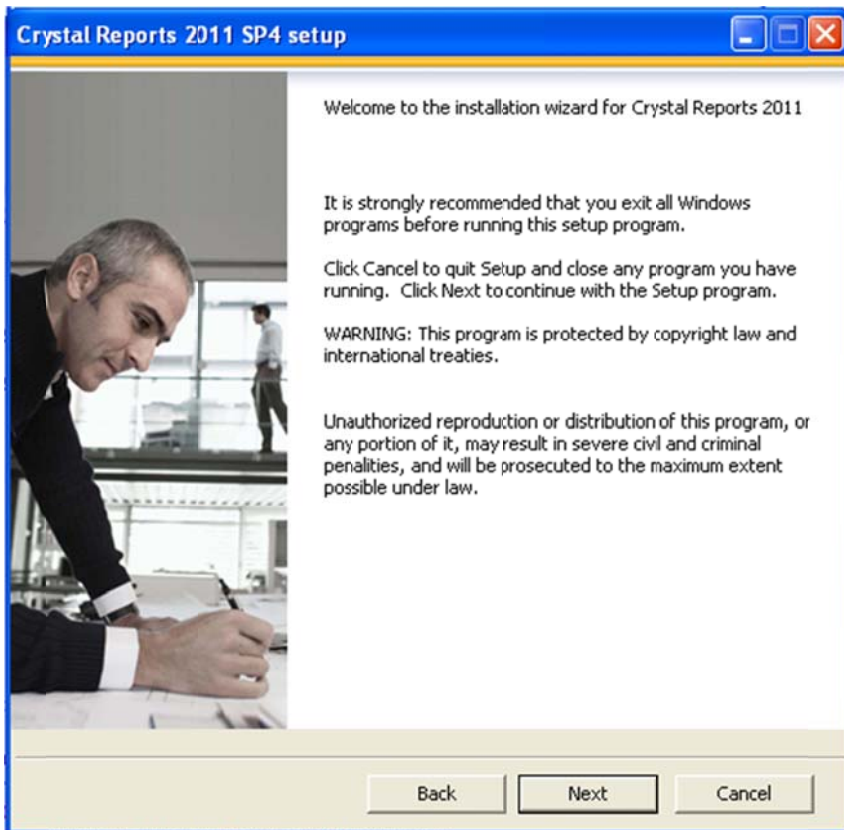
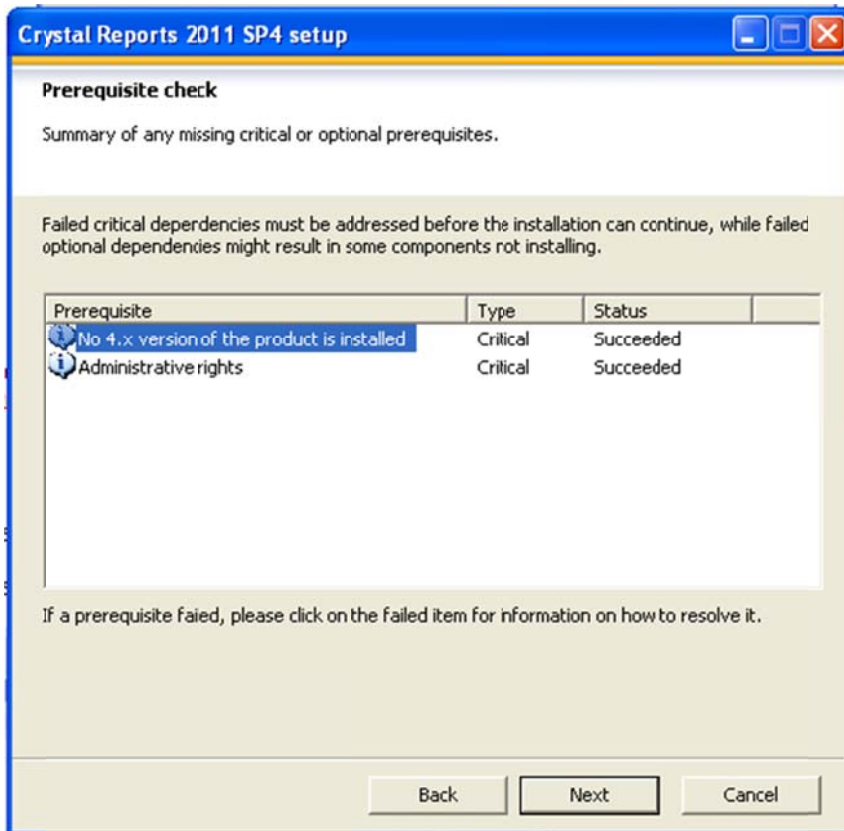
- 5- Crystal Reports Server can be installed in the same machine as the Database Access or in a different machine.

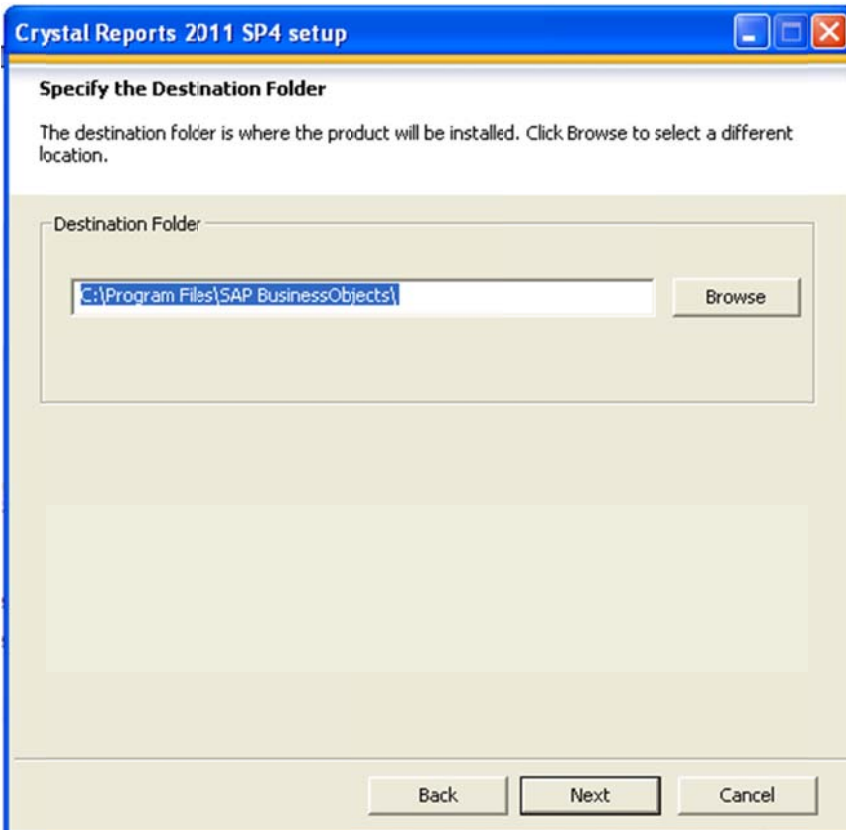
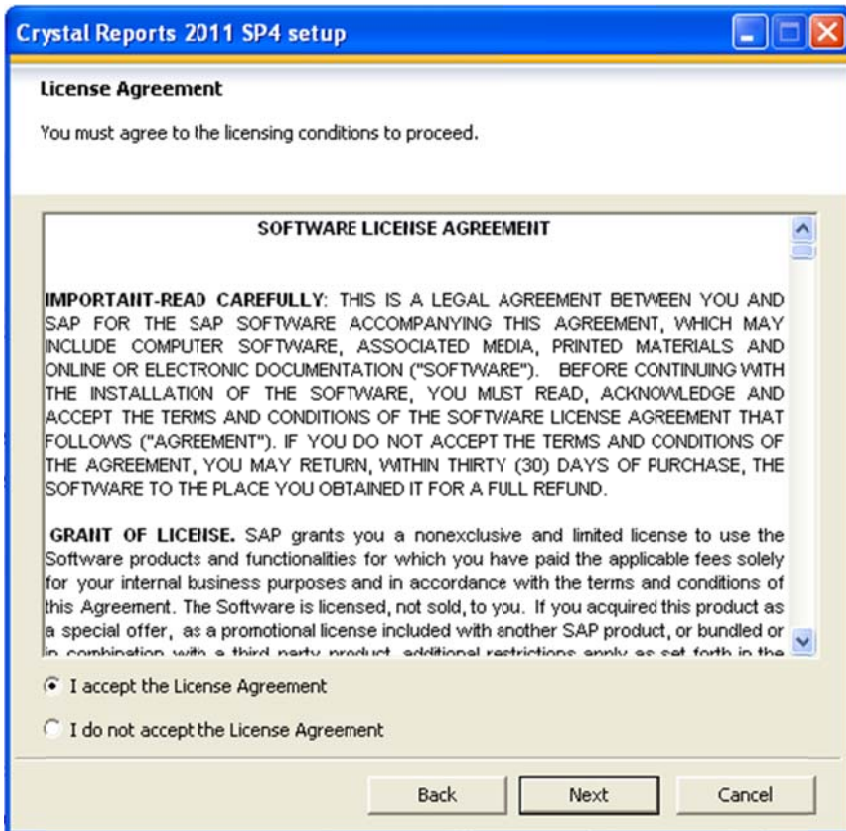
5.1- Chrystal reports installation:

A 30 days evaluation version can be downloaded from Crystal Reports web site:

<http://www.crystalreports.com/>







Crystal Reports 2011 SP4 setup

User Information

Please type your name and product key to proceed.

Full Name:

Organization:

Product Keycode:

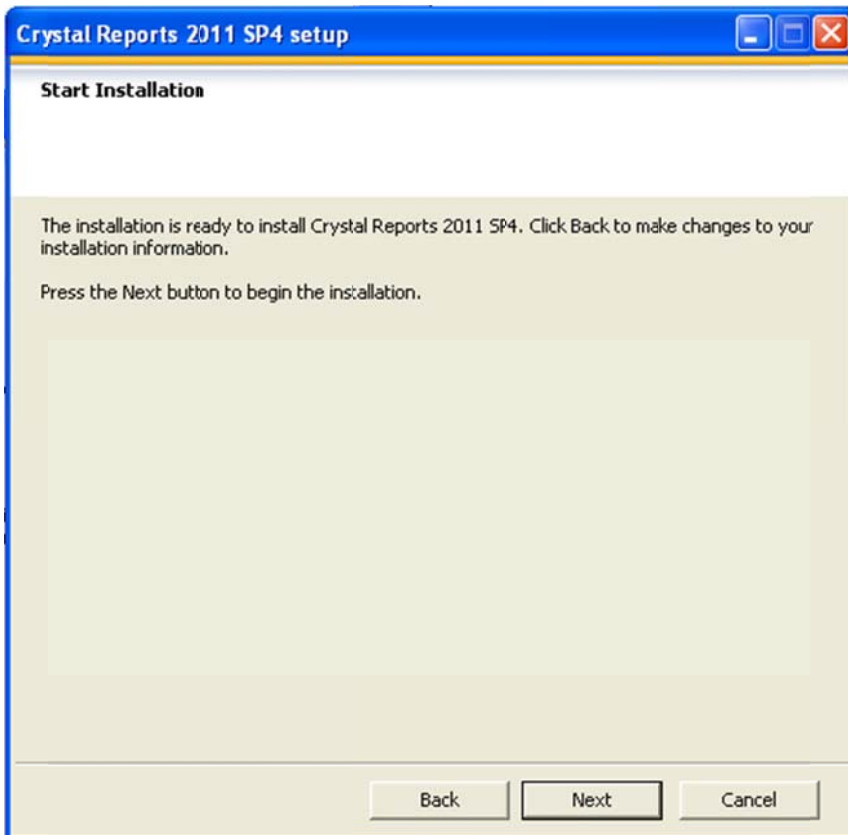
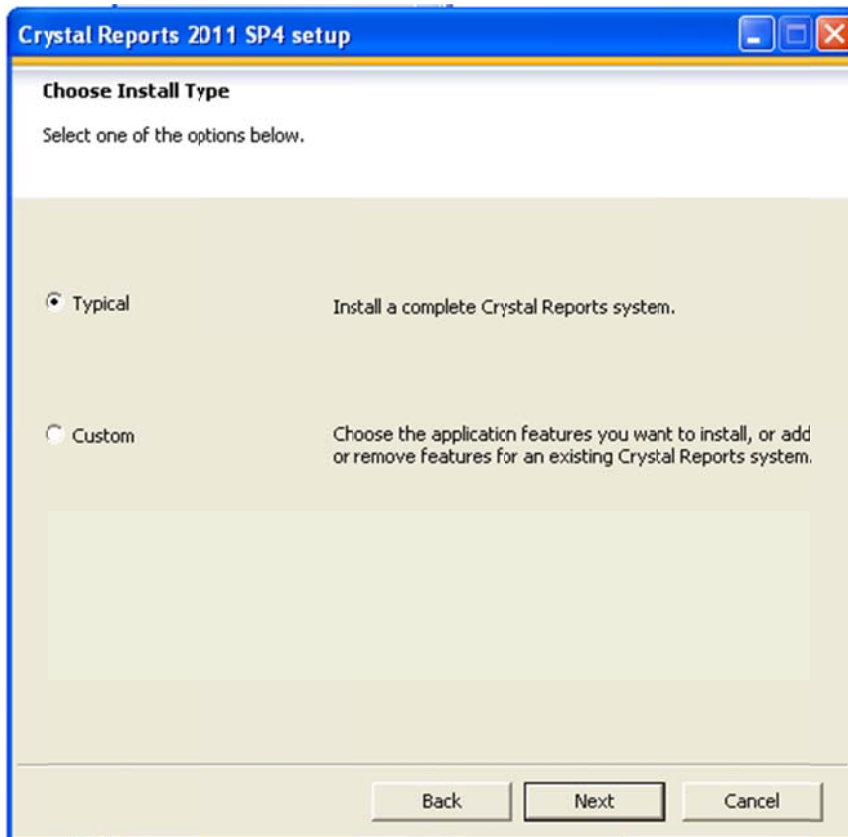
Crystal Reports 2011 SP4 setup

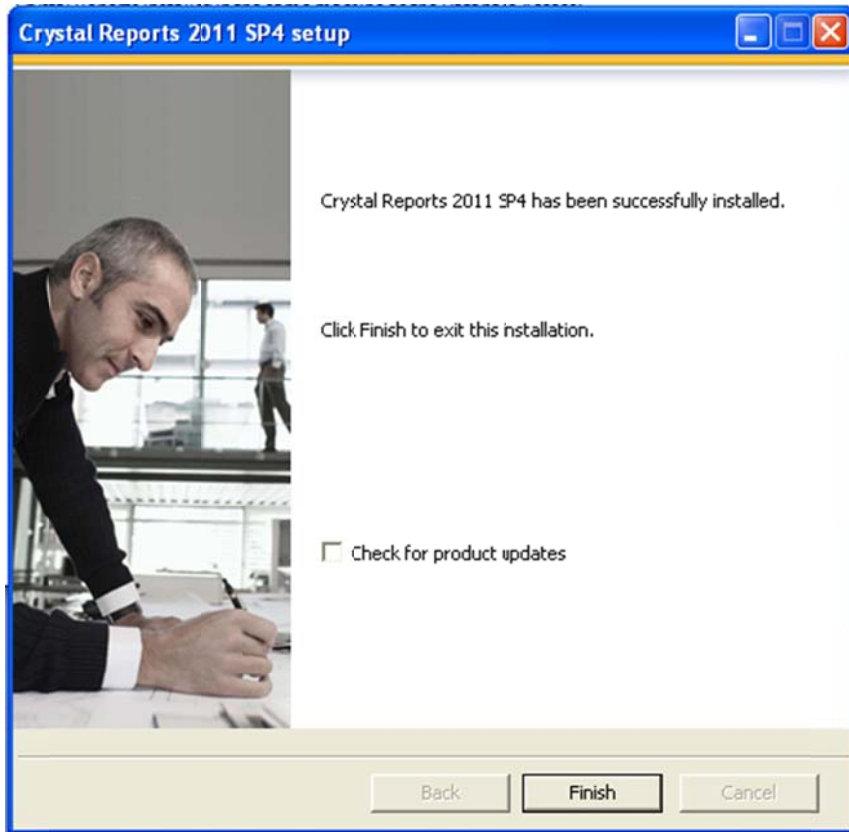
Choose Language Packs

A language pack allows a user to interact with the product in a specific language.

- Czech
- Danish
- Dutch
- English
- Finnish
- French
- German
- Hungarian
- Italian
- Japanese
- Korean
- Norwegian
- Polish
- Portuguese
- Romanian
- Russian
- Simplified Chinese

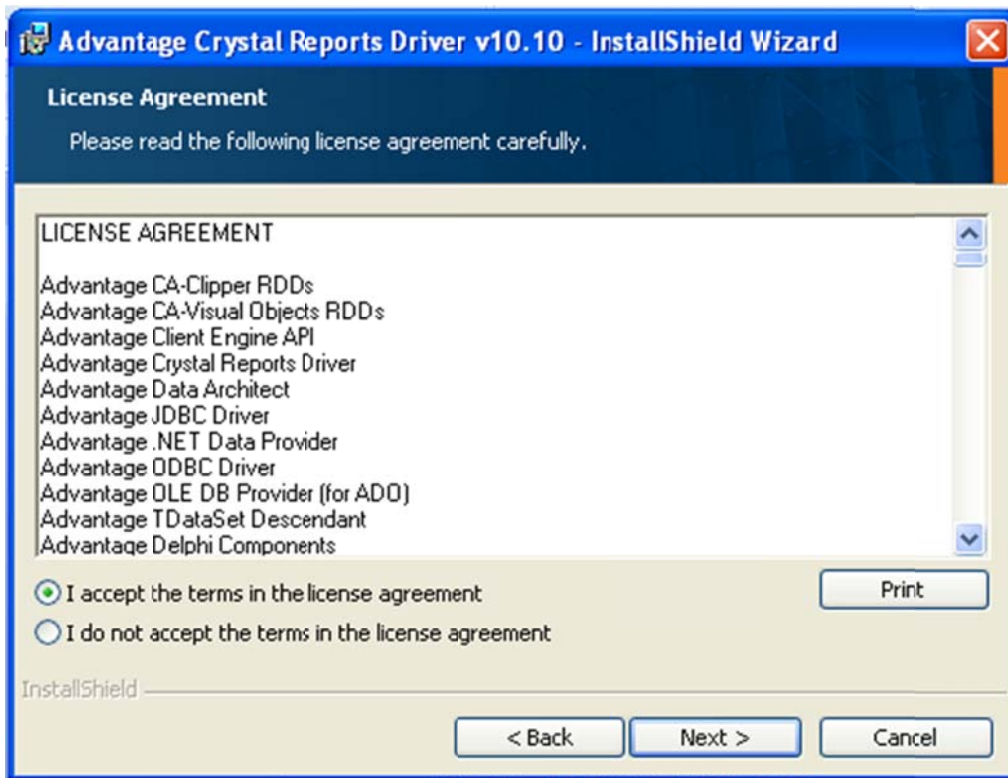
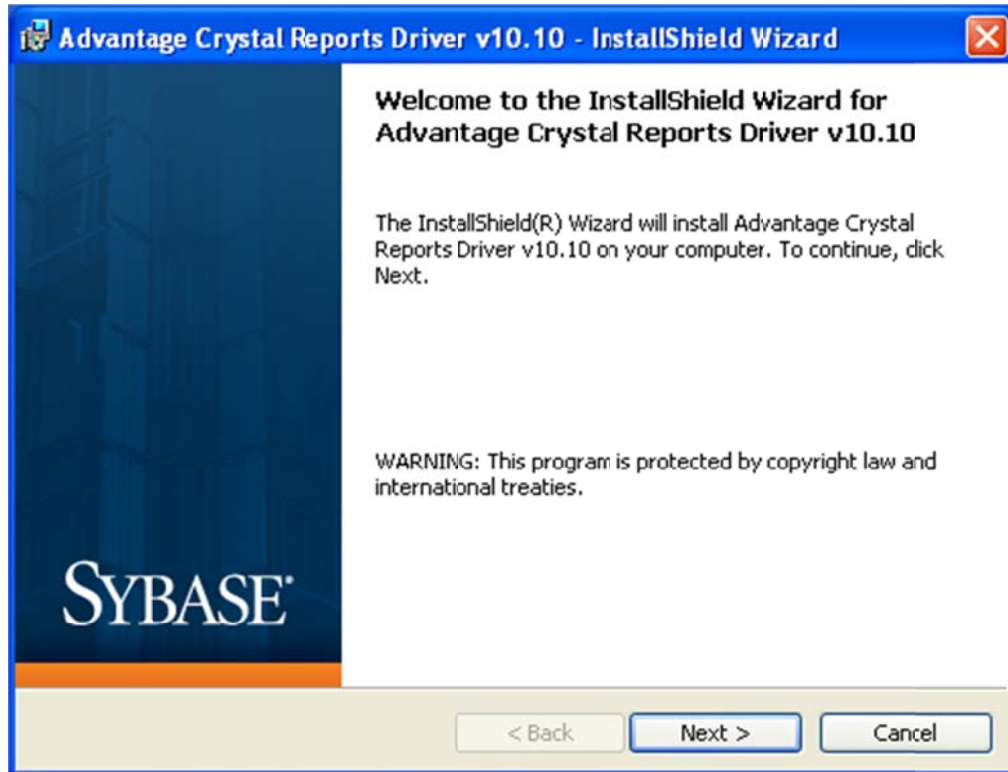
All Languages

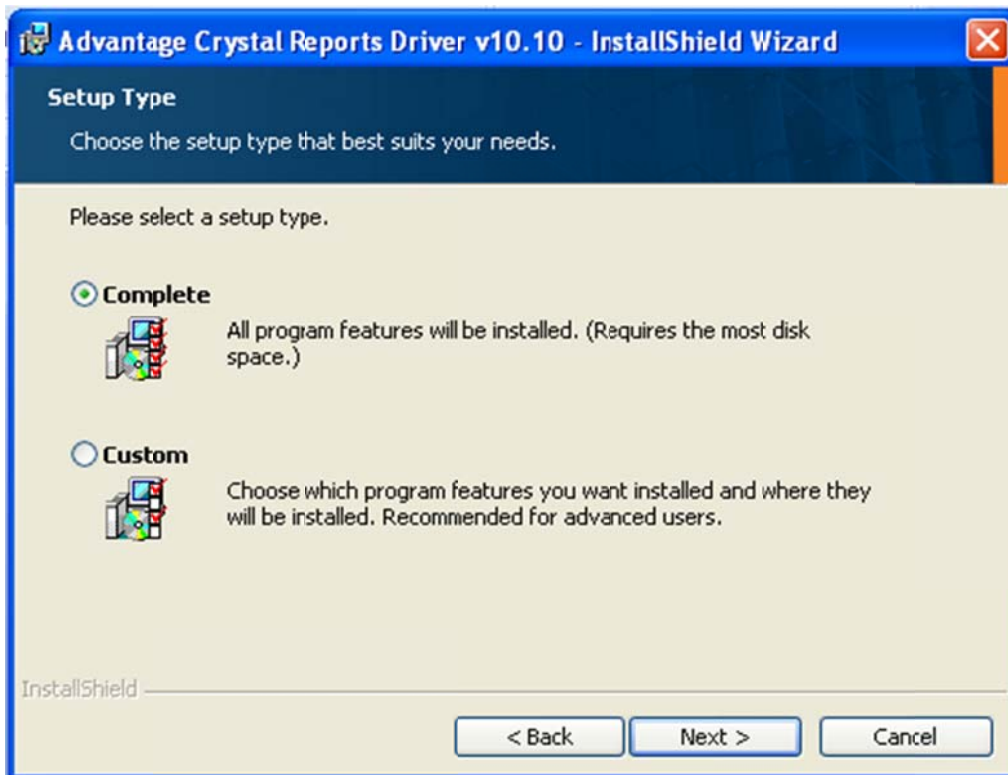
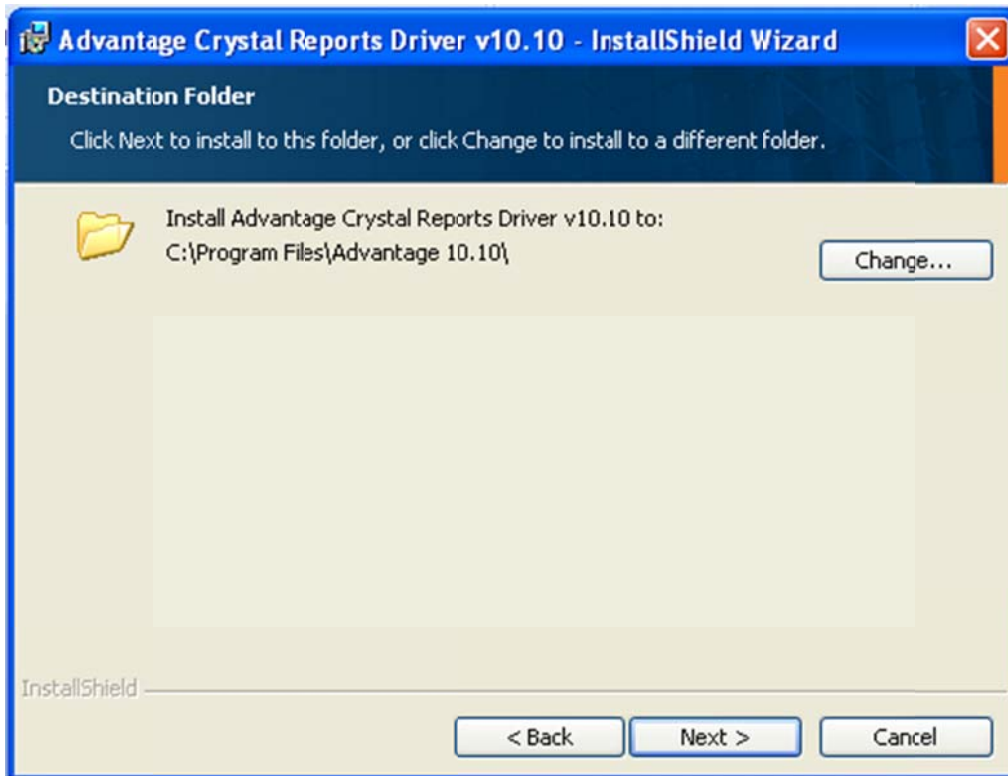


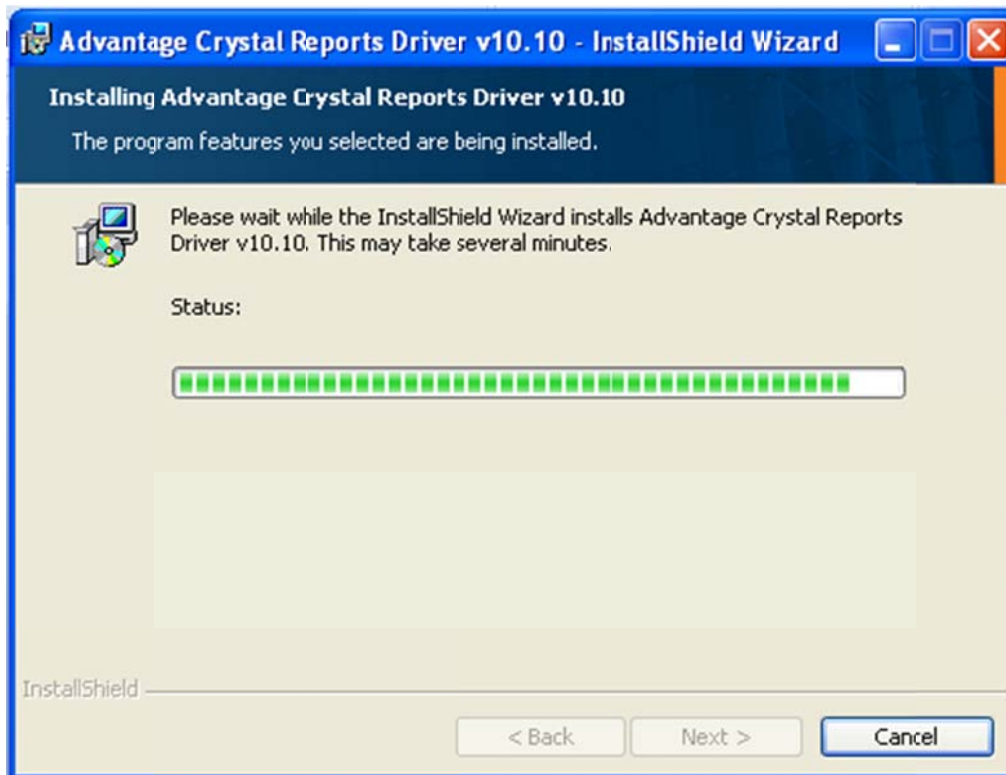
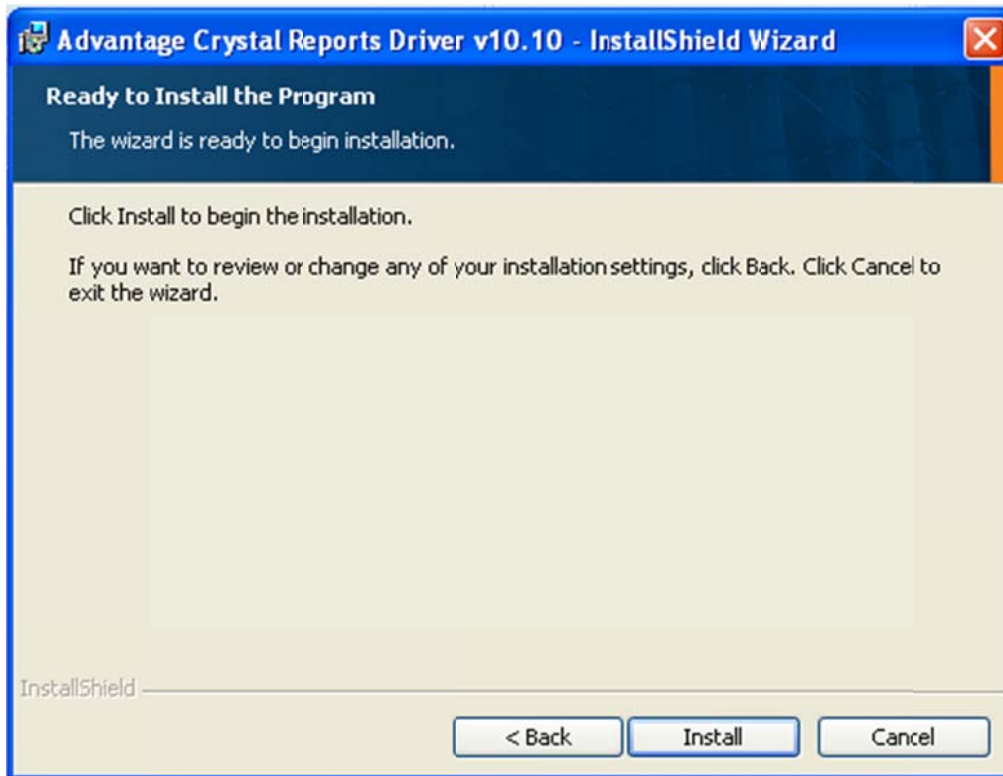


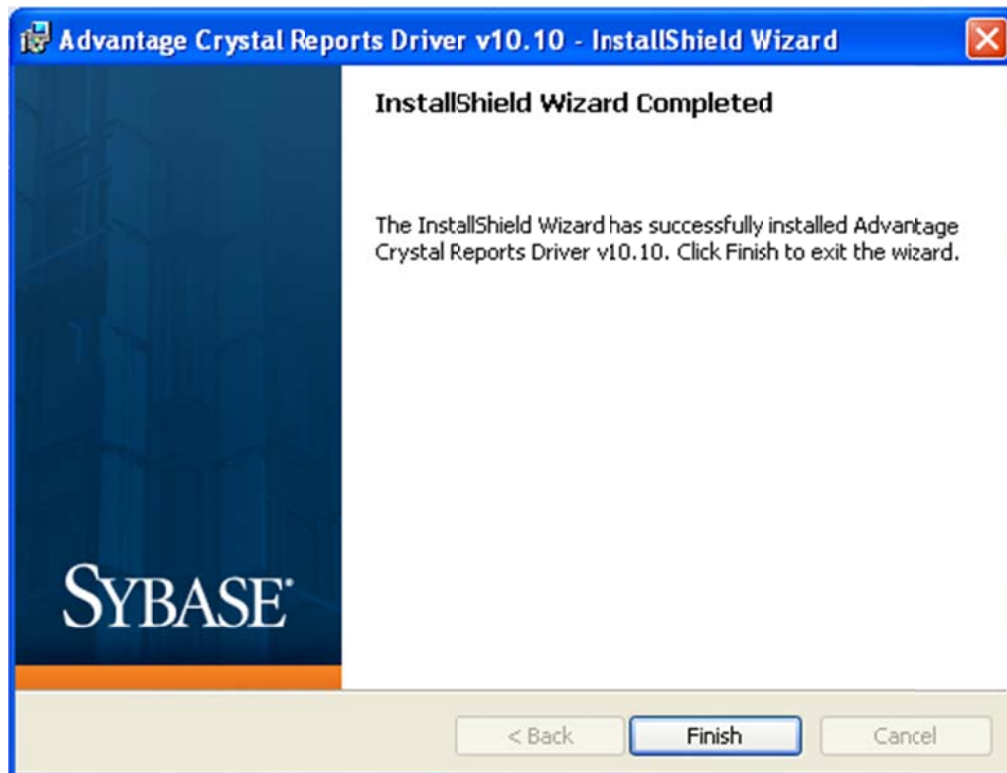
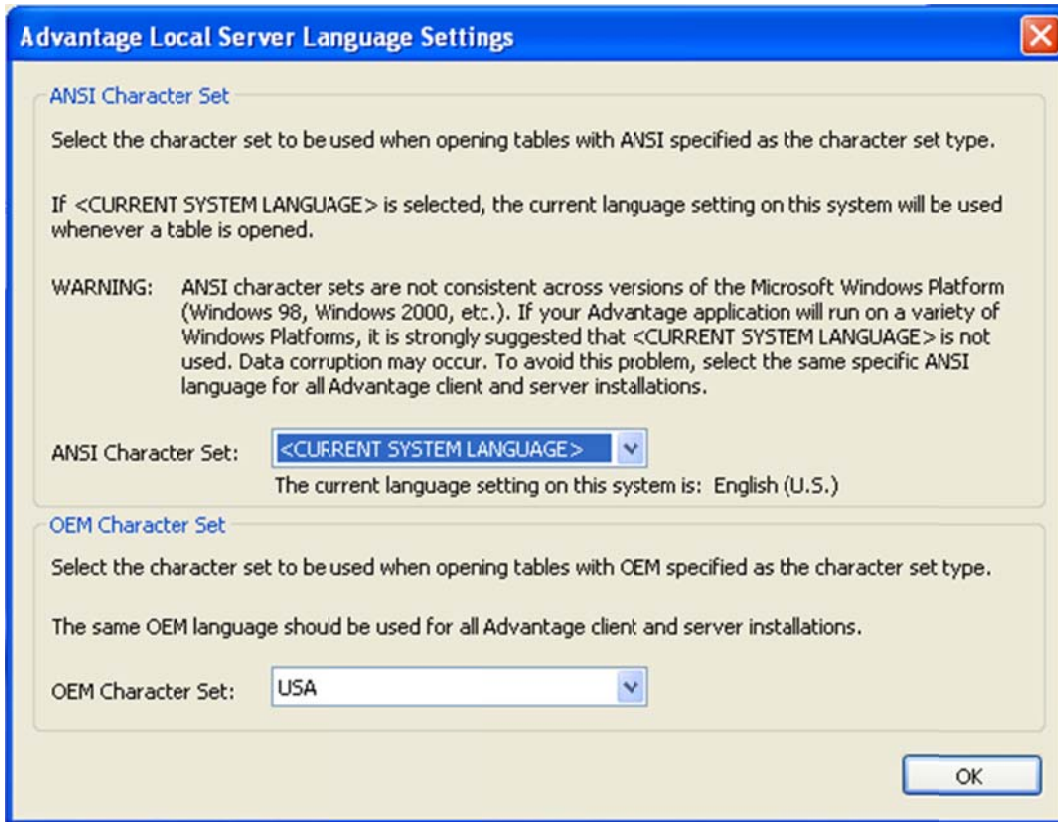
5.2- Crystal reports driver installation:

The driver can be found under the EPG installation folder:
EPGE 5.02.24\Install\Sybase\crystal.exe









After Crystal Reports installation, a DLL needs to be manually moved:
From: **C:\Program Files (x86)\Advantage 10.10\Crystal\Redistribute\crdb_ads.dll**

To: **C:\Program Files (x86)\SAP BusinessObjects\SAP BusinessObjects Enterprise XI 4.0\win32_x86**
(Path for Crystal Reports version 11 on Windows 7 x64)

6- Connect Advantage Data Architect to the Database Access:

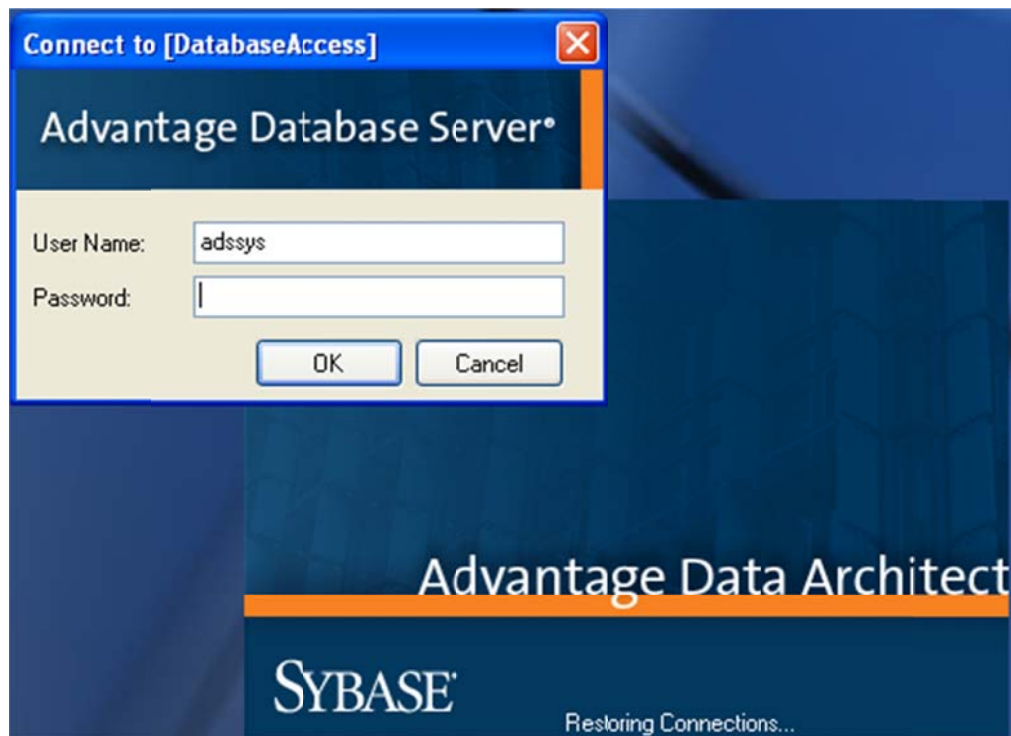
6.1- Crystal Reports installed in the same machine as the Database Access:
Open Database Data Architect 10.10

Username: Kantech

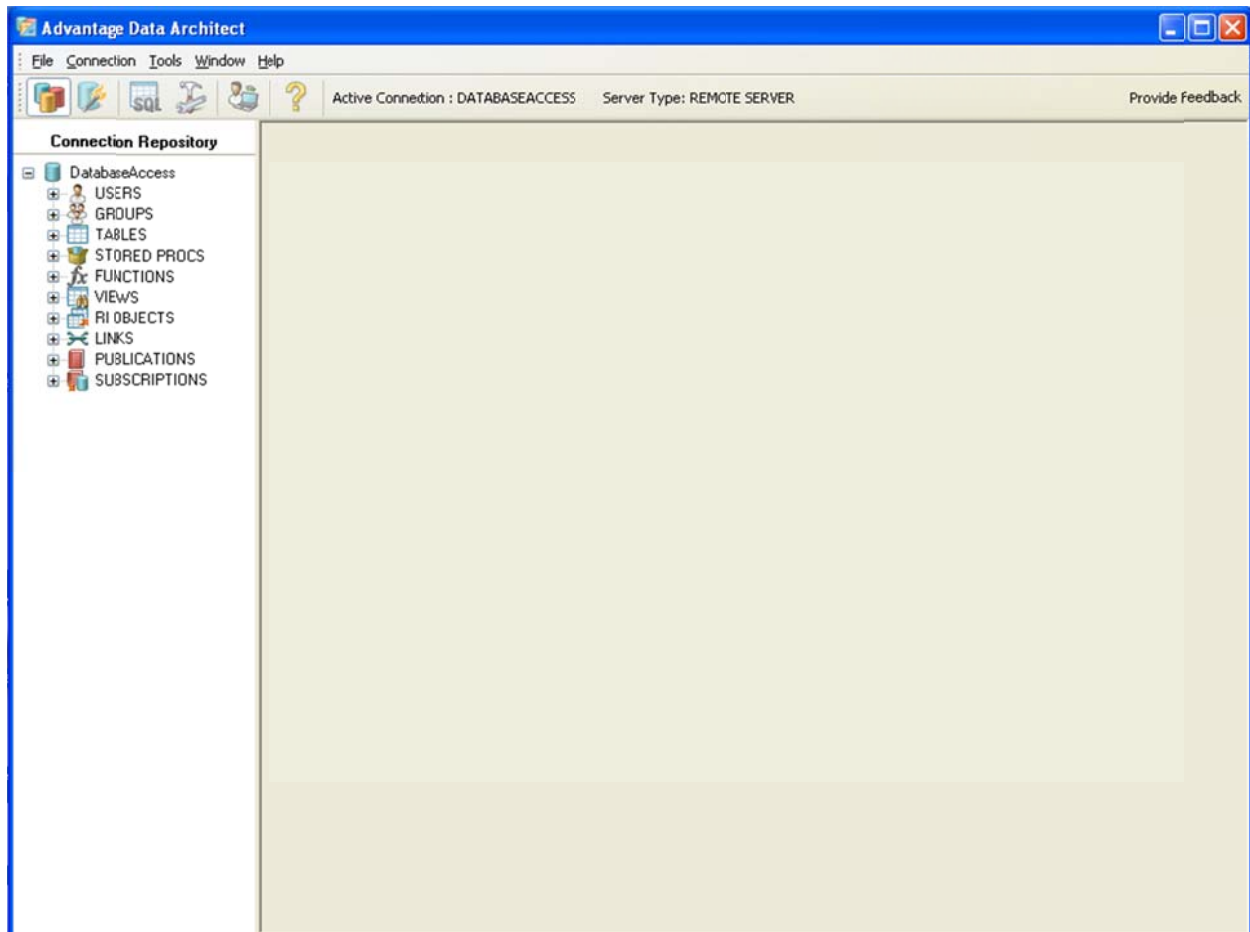
Password: Kantech

With the operator login you will have access to the database Views only.

To have access to the database Views and Table, you must use the operator: adssys.



A default connection to the Database Access already exists.



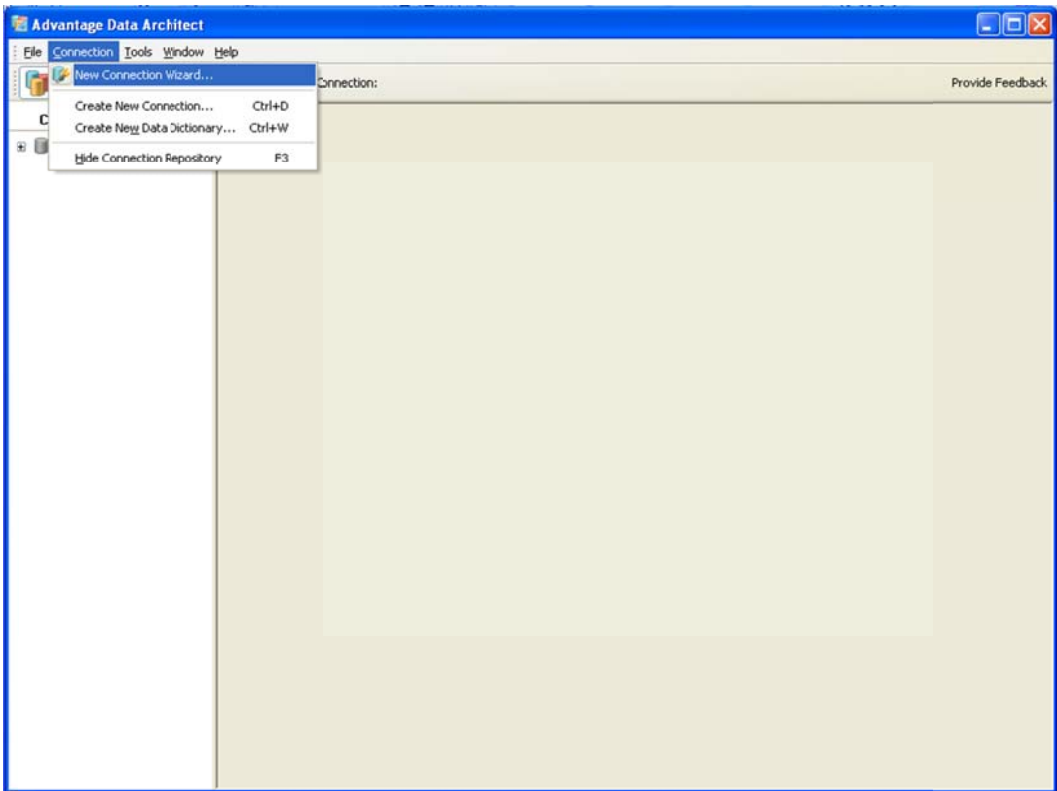
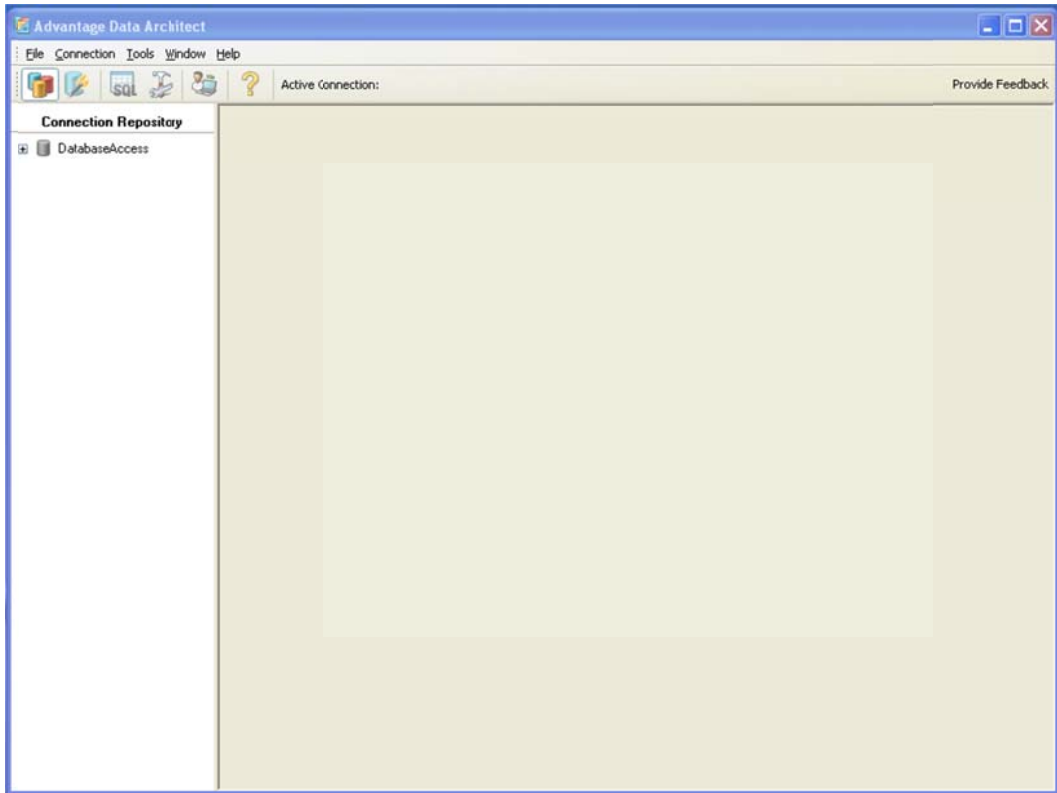
6.2- Crystal Reports installed in a different machine then the Database Access:

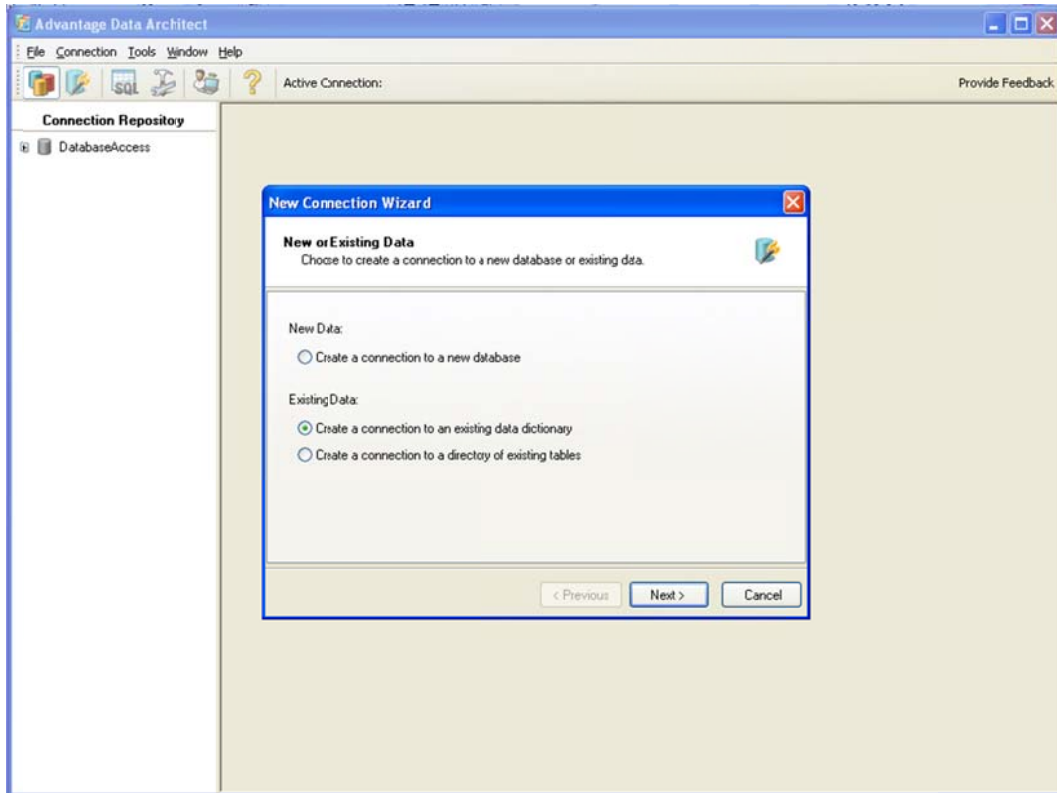
Two additional steps needs to be completed:

Install Data Architect.

Connect Data Architect to the Database Access.

Open Database Data Architect 10.10 – Connection – new connection wizard – create c connection to existing dictionary.





Database name: Give it a name

Connection path: **\\Database Access computer name\databaseaccess\databaseaccess.add**

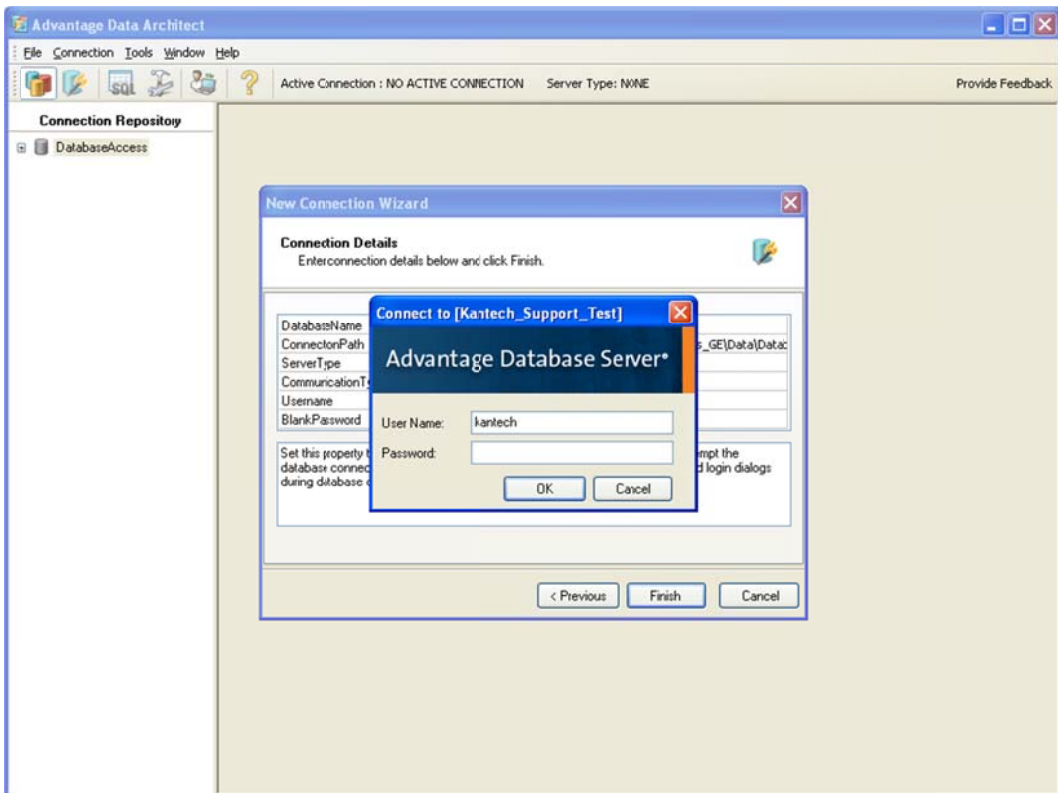
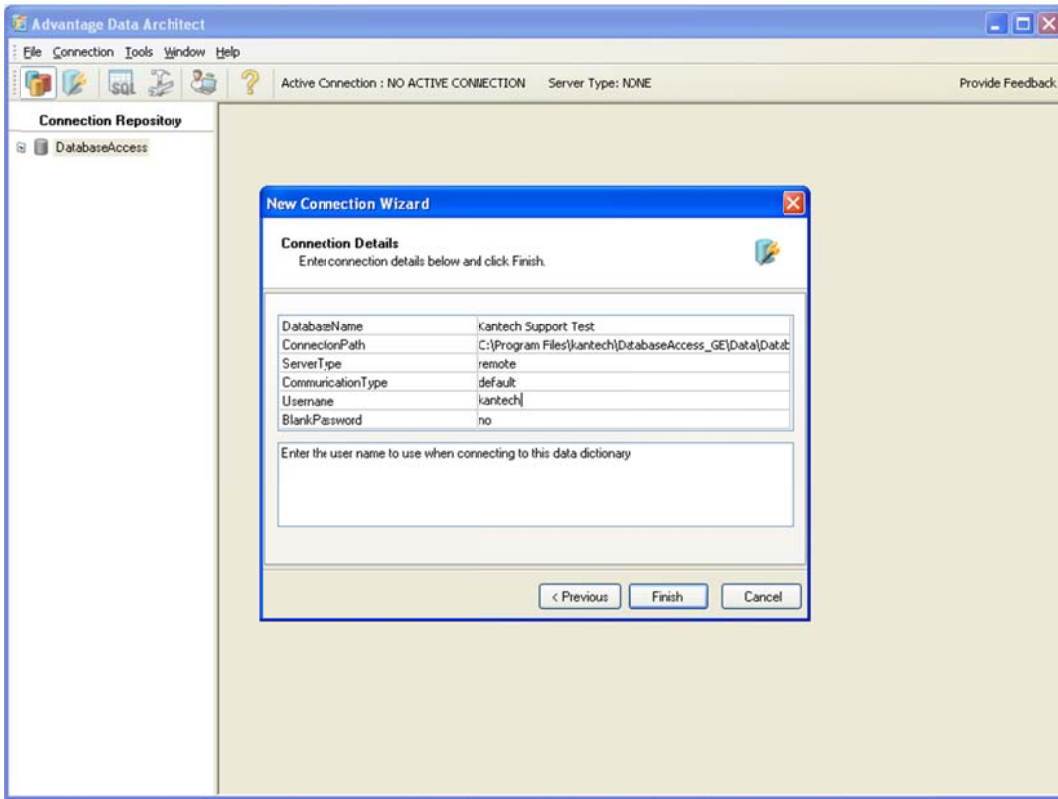
Server type: remote

Username: Kantech

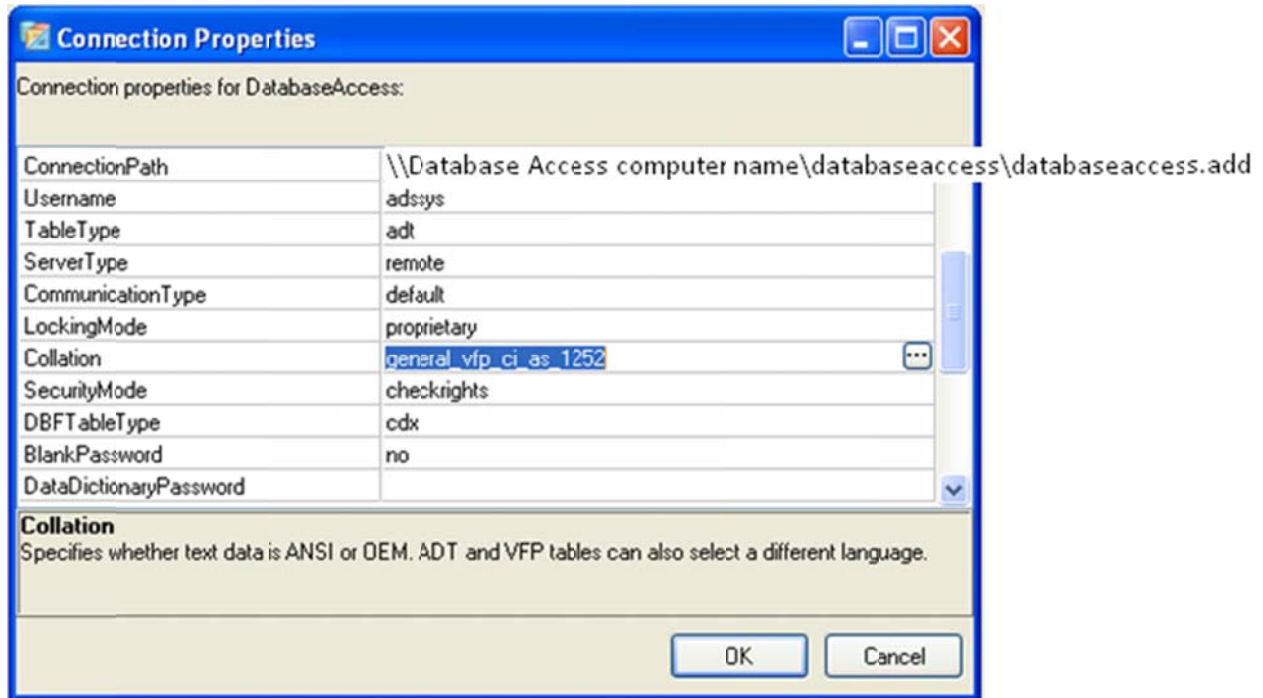
Password: Kantech

With the operator login you will have access to the database Views only.

To have access to the database Views and Table, you must use the operator: adssys.



In your database connection properties, make sure that the collation is set to:
general_vfp_ci_as_1252



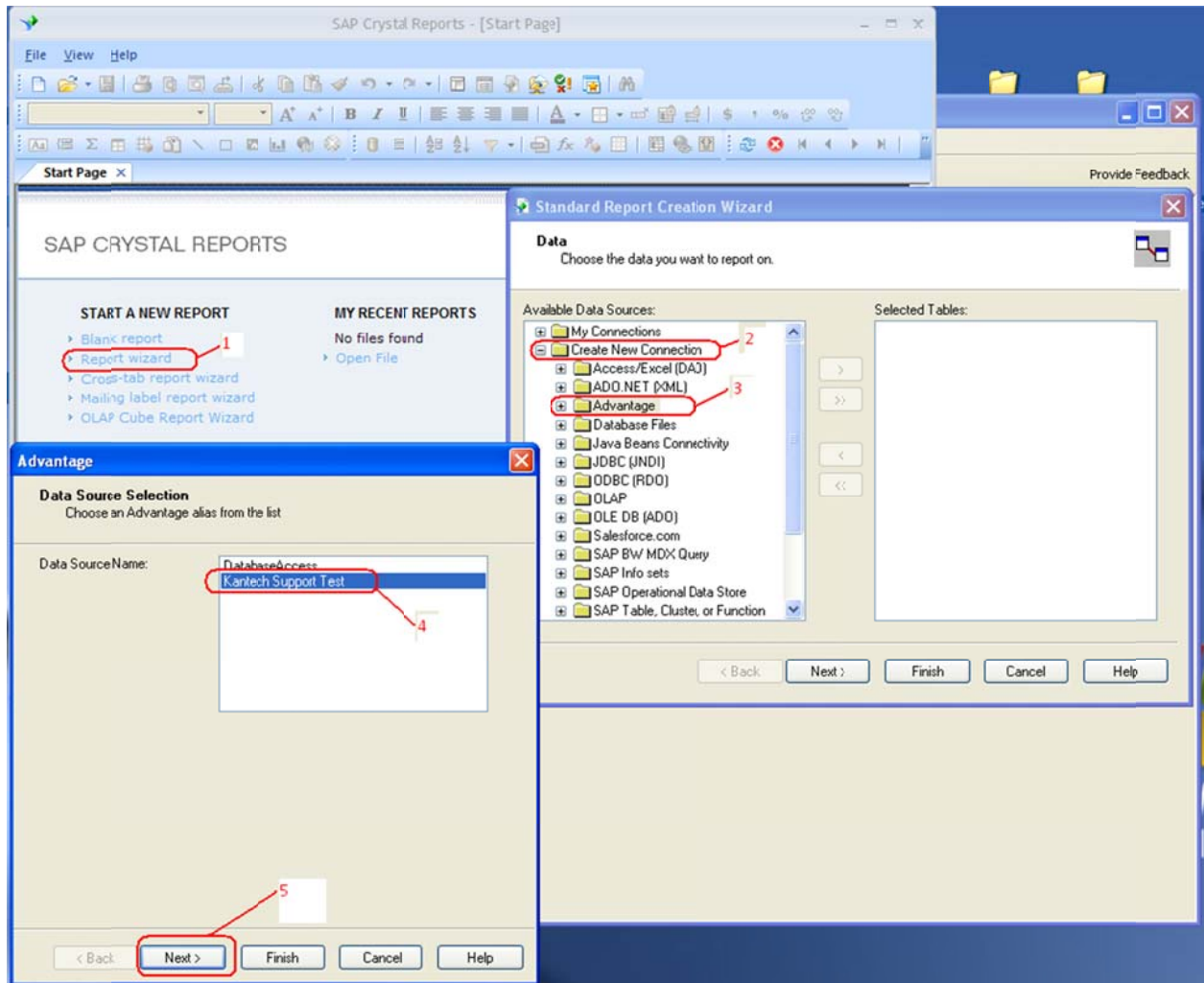
7- As a last step, open Crystal Reports:

To run reports through Crystal reports

New – using report wizard – create new connection – expand Advantage – select the database – next – enter the Entrapass operator login name and password.

- 1- Report wizard.
- 2- Create new connection.
- 3- Advantage.
- 4- Select the database source name.
- 5- Next.

Enter the database username and password.



Advantage ✕

Connection Information
Provide necessary information to log on to the chosen data source

Server:

User ID:

Password:



8641 S. Warhawk Rd. Conifer, CO 80433
Patrick.McAllister@EntrapASS.com
(303) 670-1099 (303) 679-8949 fax