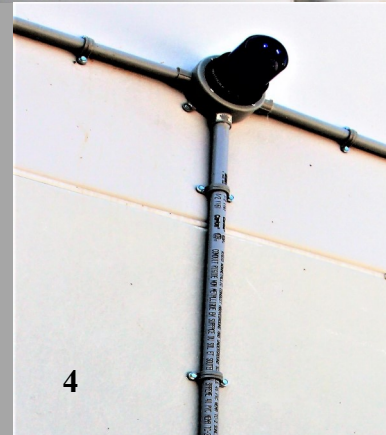


Guard Shack Electrical, Lighting & Mounting

1. All electric wiring and components are surfaced mounted.
2. All fixtures can be supplied in;
 - a. Explosion Proof
 - b. Non Explosion Proof
 - c. Non Corrosive
3. Specification sheets will be supplied for approval, positioning of equipment will be directed by customer.
4. Regular electric items supplied; Panel boxes with breakers as required.
5. Lights;
 - a. Incandescent
 - b. Fluorescent vapor light
 - c. Emergency lighting
 - d. Exterior photocell
6. Standard fan has aluminum blades and is wall mounted, size 8" to 36" single or variable speed with or without reverse thermostats. All fans will have a bird screen and hood.



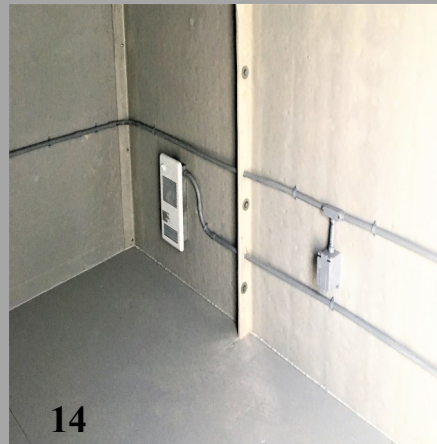
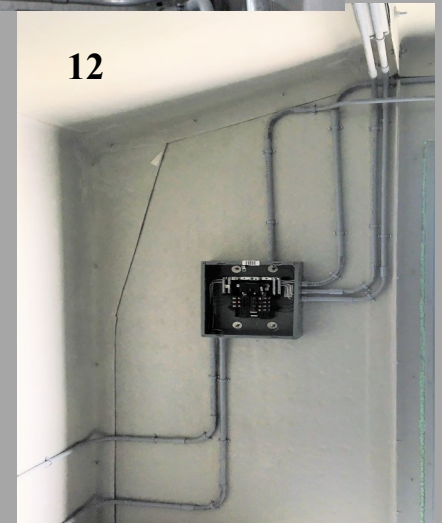
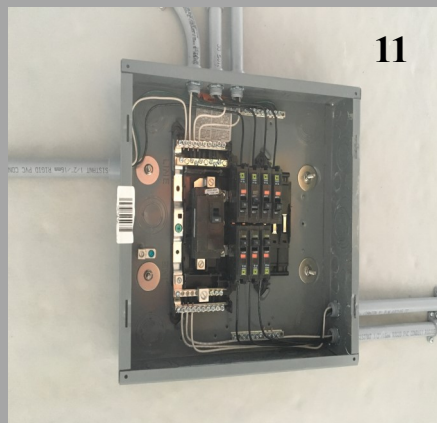
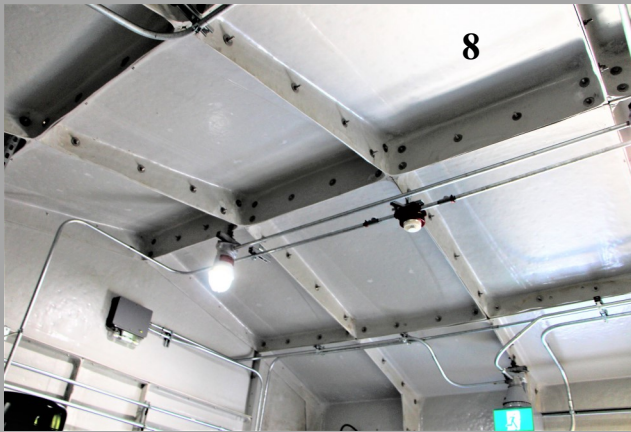
Electrical, Lighting & Mounting

It is very simple to install additional mechanical components to the interior of the structures. The internal structural flanges provide a convenient place to fasten or mount electrical boxes or cable clips for wiring.

Holes can easily be cut to mount through wall equipment such as exhaust fans and a/c units.

Panels can be re-enforced to hold the weight of larger HVAC systems that may be required.

Cable clips and conduits can be mounted to the interior surface of the insulated panels as well as the interior flanges of the parts.



Electrical, Lighting & Mounting



Electrical, Lighting & Mounting

