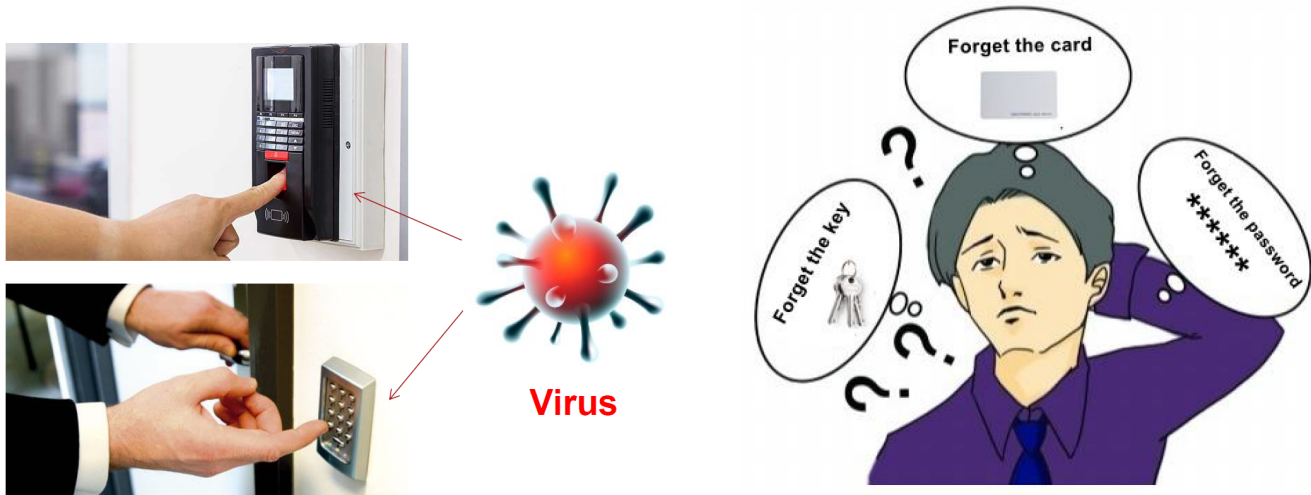
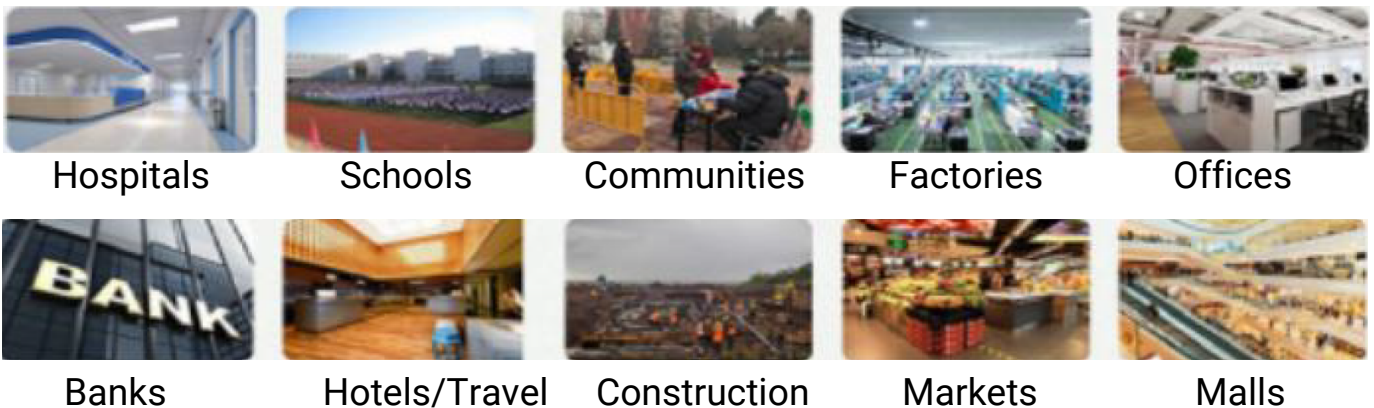


CVX021 Contactless Facial Recognition Terminal with Infrared Thermometer



Ensure health and safety when continuing or returning to work after the COVID-19 epidemic. Traditional access control often has a touched component like a shared keypad, cards, keys, or fingerprints all with the potential to spread germs.

Industries are now taking steps to protect their people and facilities through new no contact methods. The CVX021 is an excellent solution for contactless access control and applies to numerous industries.



Disadvantages of traditional access control systems include germs spreading by keypad or fingerprint and the need for a password, card or key.

The CVX021 is an excellent solution for no contact access with temperature check



CVX021 Contactless Facial Recognition Terminal with Infrared Thermometer

The CVX021 is a high-performance face recognition reader with built-in infrared thermal detection. The technology behind this device was developed to better prevent the spread of viruses and illnesses by rapidly identifying fever and therefore potential cases. This truly unique biometric reader supports facial recognition even with a face mask on.

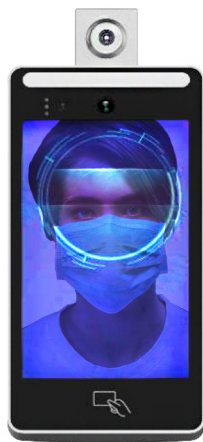
- Spot people with elevated temperatures
- Allow access by a permitted temperature range
- Identify users so that they can keep their masks on at all times
- Flag people who aren't wearing protective coverings

PRODUCT FEATURES

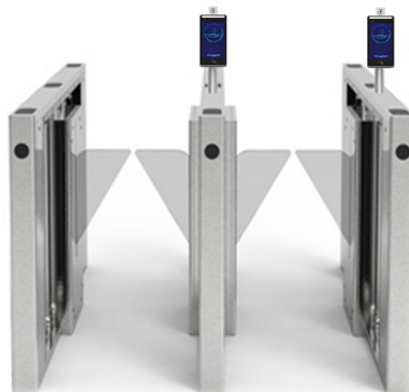
- Infrared Thermal Scanner detects an elevated temperature
- Temperature measurement accuracy: Plus or minus 0.3 degrees Celsius
- Supports Facial Recognition even when wearing a face mask
- Supports 20,000+ faces in the database
- 8-inch HD Highlight LCD Touch Screen Display
- Internal Star Light Wide dynamic-level camera with automatic exposure.
- Optimal imaging in complex lighting environments
- In-depth learning algorithms designed for speed and accuracy
- Monocular-visible living algorithms, support for photos, videos, anti-spoof
- Support for multiple recognition modes: Face, Face + Card, Smart Cards
- Built-in wide dynamic infrared camera and temperature measurement module
- The device uploads directly to a data network in real-time and learns faces with 'cached' images
- Uses new or imported identification numbers
- Face blacklist controls can integrate with police photo ID database
- Supports logon management, query and set device parameters, data import/export
- Supports USB interface to an external ID card reader (Optional built-in ID card reader)
- Authentication result output in fixed voice prompts
- Relay switch output through international standard Wiegand protocol (W26 \ W34)
- Waterproof design, suitable for outdoor use, Post or Wall Mounting

CVX021 Contactless Facial Recognition Terminal with Infrared Thermometer

The CVX021 terminal incorporates thermal imaging cameras to help spot people with elevated temperatures and can send pop-up alerts to users of the software. Mounted on a post, wall, door frame, or turnstile, the scanner can be programmed to allow access by permitted temperature range. It supports facial recognition even when users are wearing a mask - using a powerful embedded camera and the latest face and demographic recognition algorithm. The camera reads the facial characteristics that are not covered, including eyes, eyebrows and parts of the nasal bridge to identify users so that they can keep their masks on at all times while still gaining access to their facilities. It can also be used to flag people who aren't wearing the protective coverings and require them to wear a mask to gain access to a building.



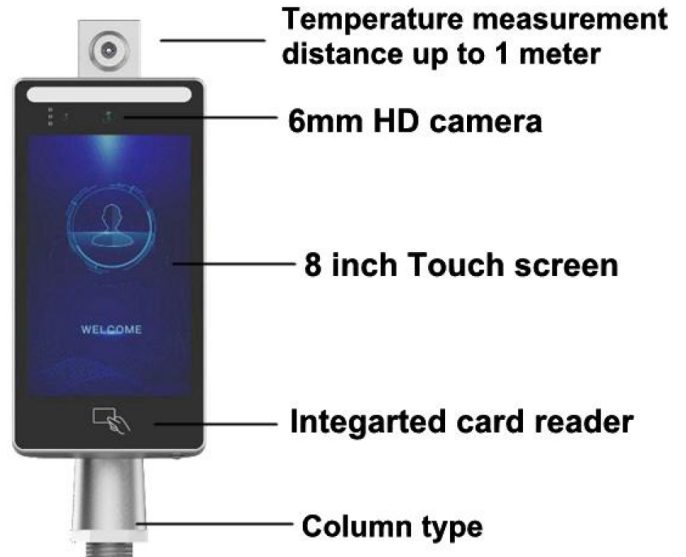
**STANDALONE
ACCESS CONTROL**



**TURNSTILE GATE
ACCESS CONTROL**



**DOOR
ACCESS CONTROL**



Android system

Android 5.1 system, Qual core CPU
8 inch touch screen

Long distance recognition

Face recognition distance: 0.3-2m
Temperature recognition distance: 0.7-1m

Capacity

Face ID, 20,000 pcs
Record, 100,000 pcs.

Contactless recognition

No need to touch the equipment,
it can much more convenient for hygiene



Stability

Different angles/ different light face changes can be accurately identified

High accuracy

Infrared thermal imaging module,
temperature measuring accuracy
 $\pm 0.3^{\circ}\text{C}$

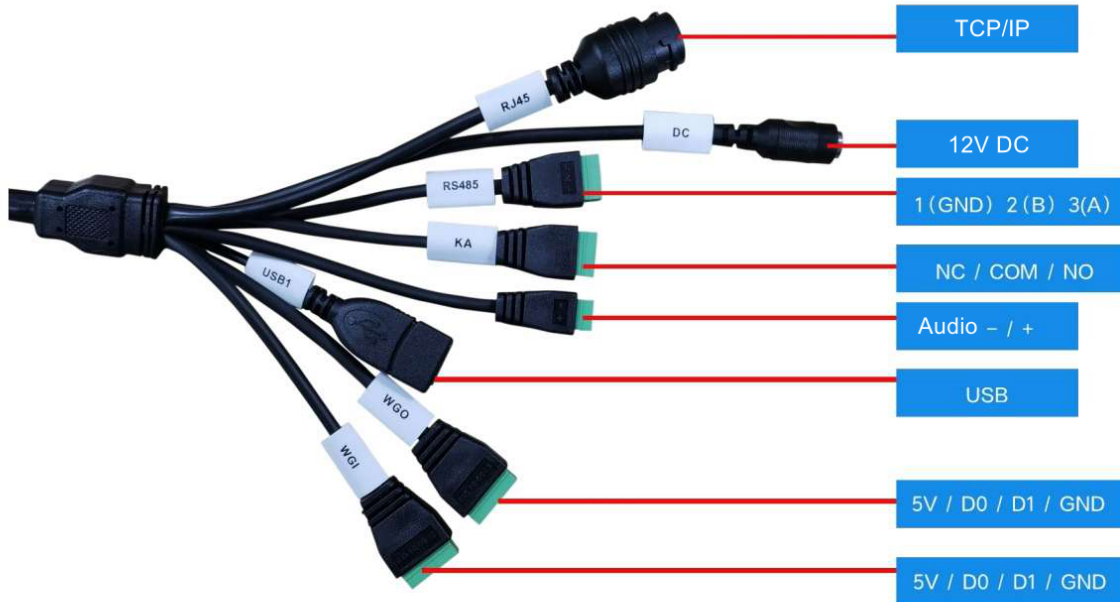
Development

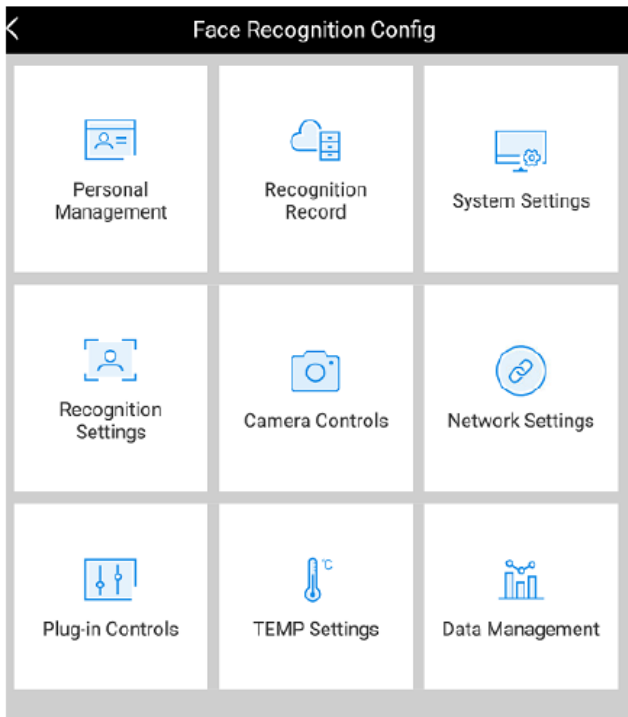
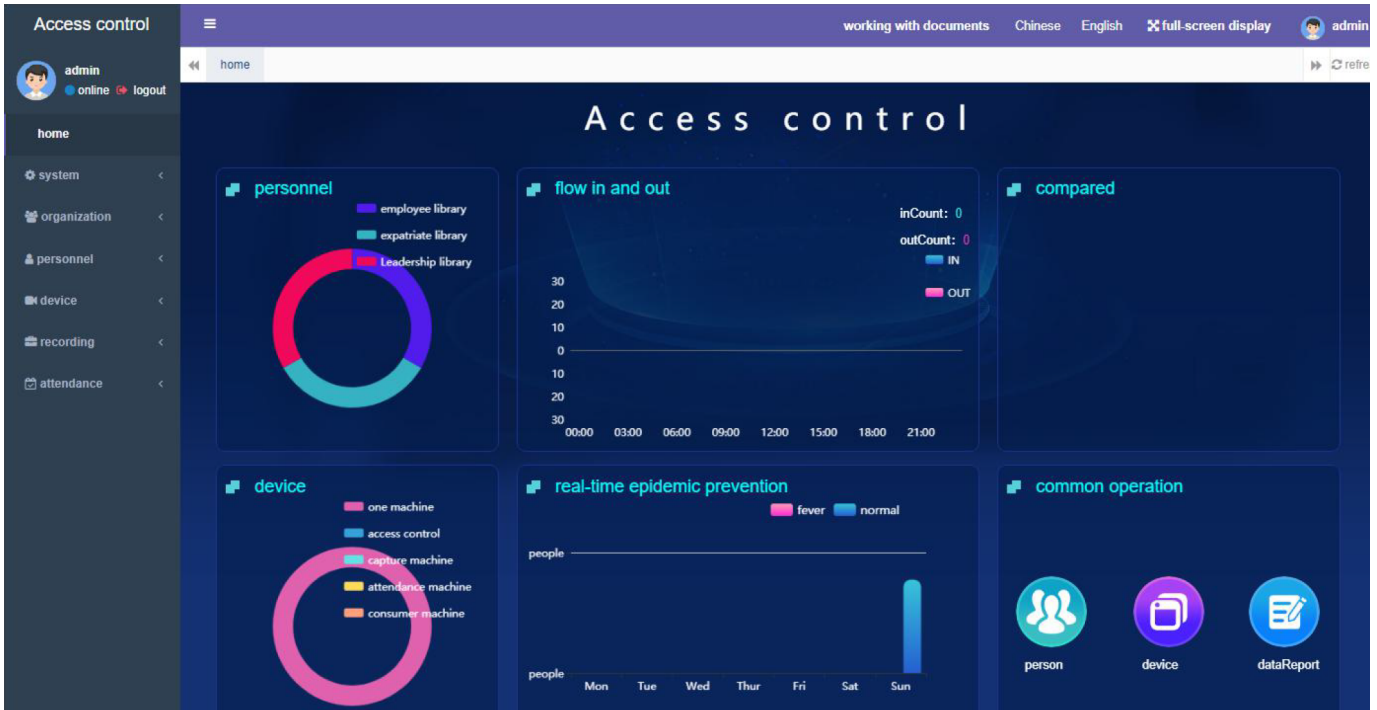
Support multiple API and SDK docking for secondary development

Diverse application

Supporting expansion of various peripheral devices such as ID card reader, fingerprint instrument, IC card reader etc

WIRING TERMINALS





The Personnel Adding form contains the following fields and options:

- Name:** David
- Sex:** Female Male
- Auth:** Admin White List Black List
- Portrait:** [Portrait photo]
- Mobile:** 1311111111
- ID:** 360808198807253612
- Staff Num:** 12301
- Word Card:** 158728
- Department:** Movie
- Post:** actor
- Authorized period:** Please select the time >

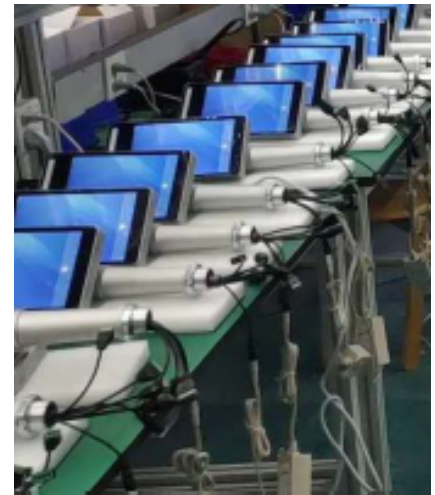
APPLICATION



APPLICATION



PRODUCTION





CVX021 Contactless Facial Recognition Terminal with Infrared Thermometer

PRODUCT SPECIFICATIONS

		CVX021	
Hardware		description	
Host computer	system	Android 5.1	
	CPU	Rock chip RK3288KQuad-CoreCortex-A17, clocked at up to 1.8GHz, Industrial master	
	RAM	2GB DDR3	
	hard disk	8GB EMMC	
camera	RGB	1 / 1.8inch SONY IMX385 Super Star Class Progressive scan 2.1million pixel CMOS image sensor	
	Infrared (Optional)	1 / 2.8inch WDR progressive scan130Megapixel CMOS image sensor, 3 850nmInfrared lights	
	Wide Dynamic	≥ RGB camera120dB	Infrared cameras ≥100dB
	Shot	6mm/ RGB	6mm/Infrared
Display	size	8 inches/Full view/Highlight	
	Resolution	800 * 1280 Portrait	
	Screen elevation	0 to 30 degrees adjustable shaft	
	touch screen	stand by	
performance		description	
Recognition time		≤0.6S (Twenty thousand people face database)	
Of identification		Resident Identity Card, Mi-fare/ NFC card, face	
Face verify the accuracy rate		≥95%	
Passing rate		99%	
Error rate		0.01%	
Facial recognition distance		0.3M ~ 2.5M	
Face Capacity		No limit, it is recommended 20000	
Algorithm suitable for race		Full race (yellow / black / white / Latin, etc.)	
Vivo detection		Support, monocular visible in vivo discern	

CVX021 Contactless Facial Recognition Terminal with Infrared Thermometer

PRODUCT SPECIFICATIONS

		Optionally, binocular infrared + visible live double discrimination
Masks recognition		Supported alerts for "not wearing masks"
Temperature Performance	Temperature range	10°C To 50°C, indoor windless
	Temperature measurement accuracy	± 0.3°C
	Temperature resolution	0.1°C
	Temperature distance	0.5~ 0.75m
	Angle of view	90 ° (H) * 90 ° (V)
	Response time	200ms
	Batch entry	
Management Platform		Support, B / S Architecture
Interface Features		description
Switch		A switch input
		1 channel output gate opening/ Dry contact
Wiegand		Wiegand input channel 1In, support Wiegand26withWiegand 34
		Channel 1 output Wiegand, Supports Wiegand26withWiegand 34
The internet		A RJ45 10M / 100M Ethernet interface adaptation
USB		USB OTG
Card Reader	IC card	Optional
	ID card	Optional
	ID card	Optional, ID card reader can support and IC card
Common Characteristics		description
power supply		DC12V
Size (WxHxD)	Column	130 * 292* 34mm
	Wall-mounted	130 * 292 * 34mm
	Floor-standing	200 * 1505.3 * 300mm
Jobs surroundings		-30°C - +75°C, ≤90% RH
Protection class		IP66
Mounting		Standing or wall mounted or floor mounted