



TURNSTILES.us

V Ò Ô Ò P Ƨ Q Œ Š Á Ÿ Ü Œ Y Q Œ Û

PÜFË Á æ d ð ã @ Û , ã * Á Õ æ ^ •

1 2 3 4 5 6 7 8

A

A

B

B

C

C

D

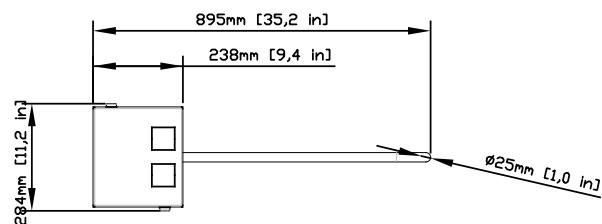
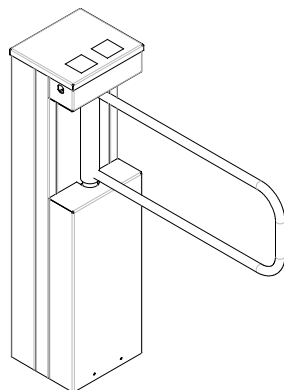
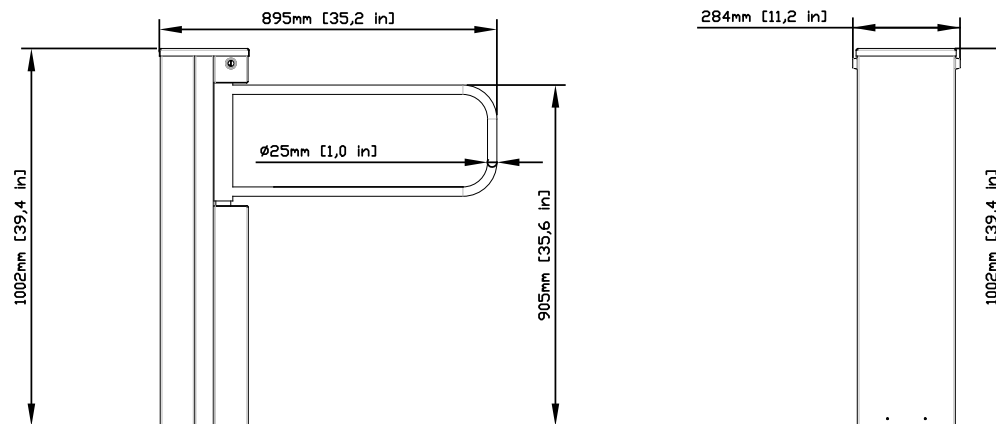
D

E

E

F

F



TURNSTILES.us

www.TURNSTILES.us
Call 303 670 1099 * Text 303 918 9787
patrick.mcallister@turnstiles.us



DATE

01.08.2018

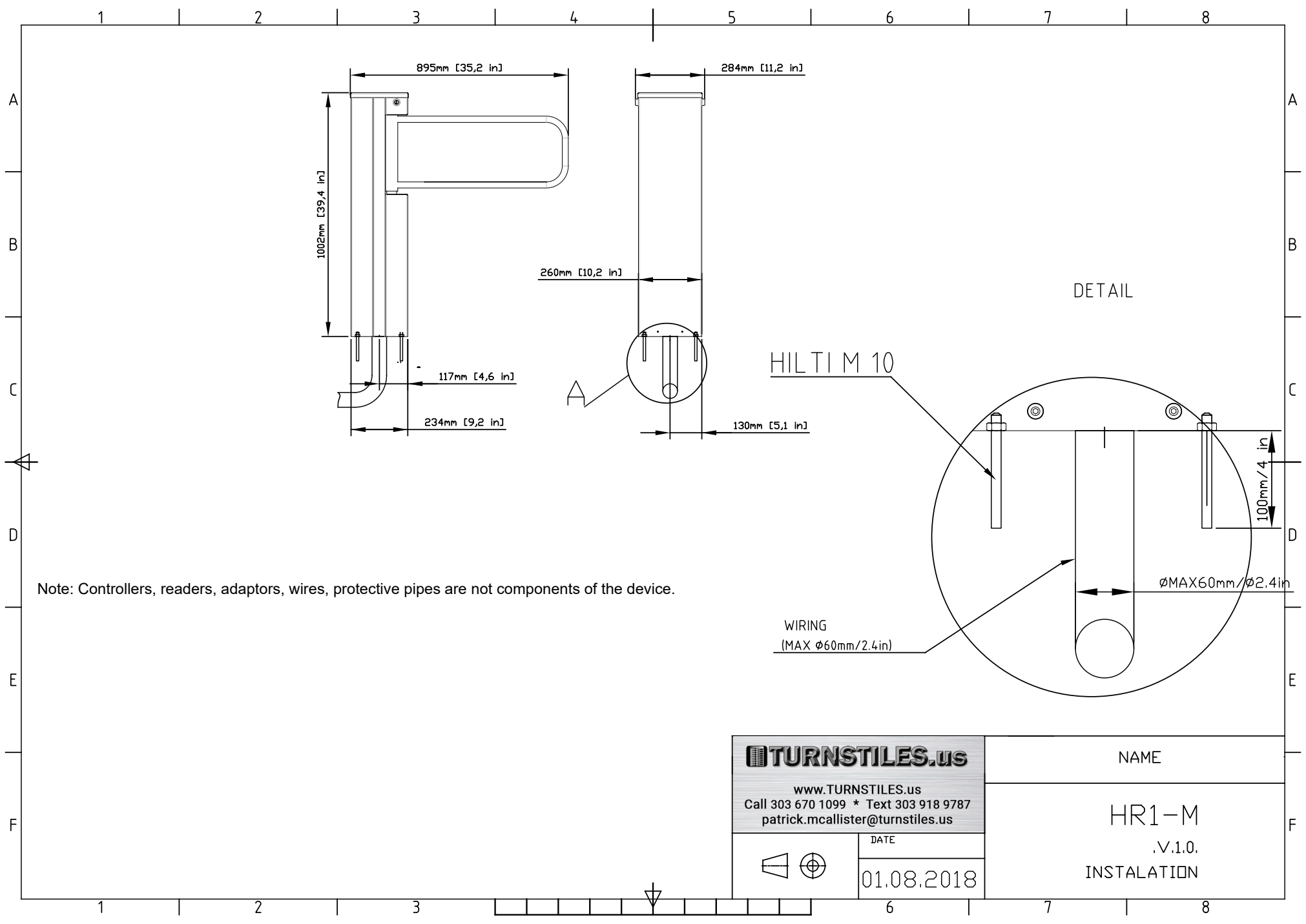
NAME

HR1-M

.V.1.0.

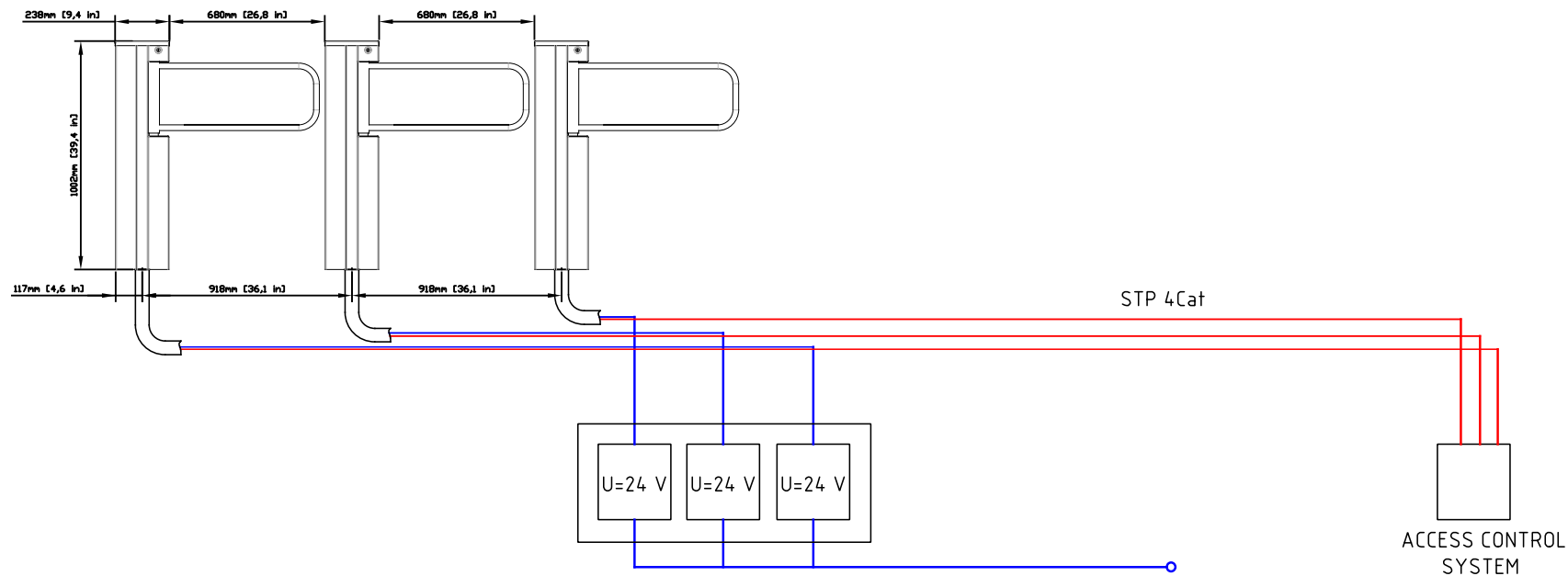
CONFIGURATION

1 2 3 4 5 6 7 8



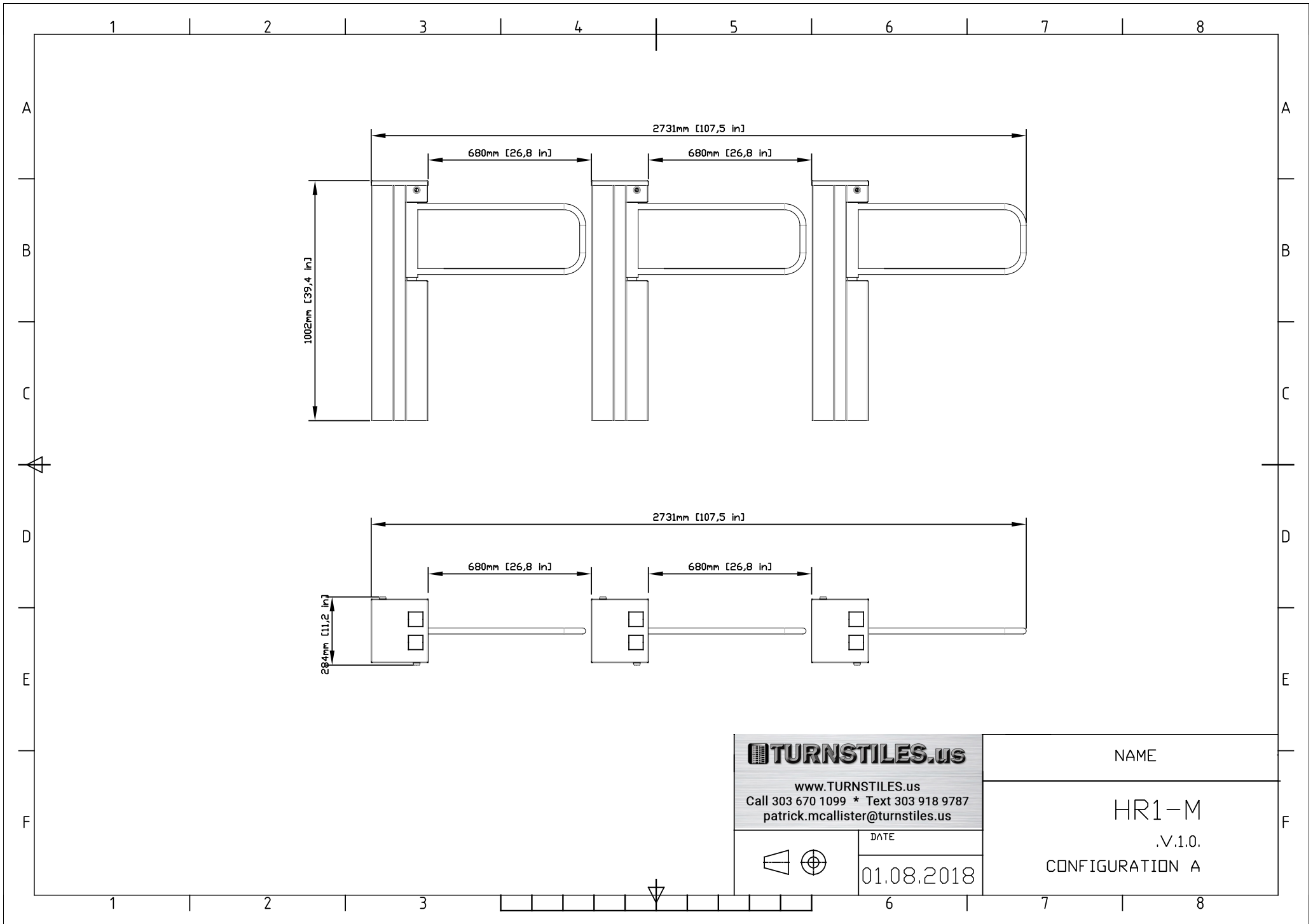
Note: Controllers, readers, adaptors, wires, protective pipes are not components of the device.

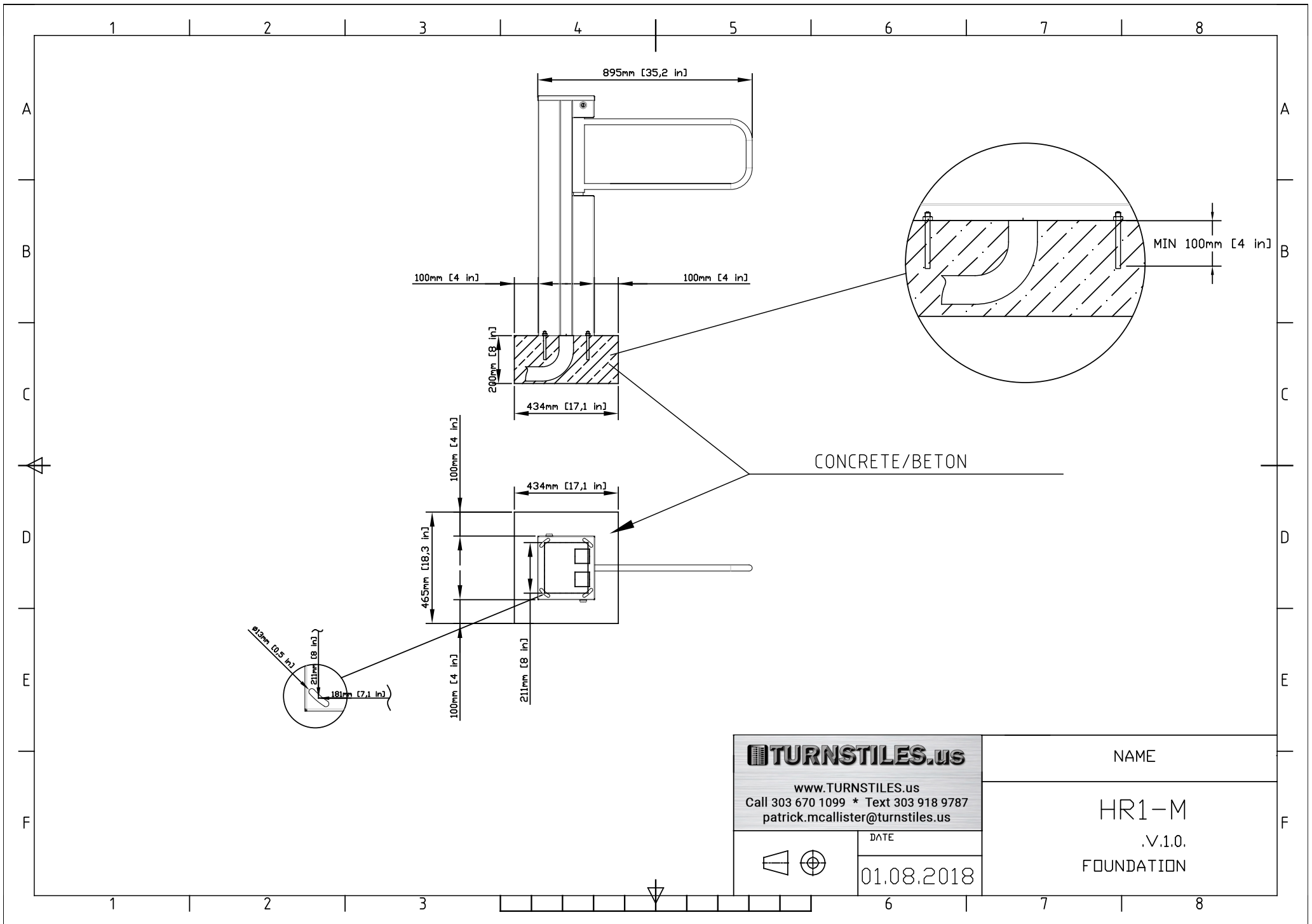
TURNSTILES.us www.TURNSTILES.us Call 303 670 1099 * Text 303 918 9787 patrick.mcallister@turnstiles.us	NAME	
	HR1-M	
	DATE 01.08.2018	.V.1.0. INSTALATION



Note: Controllers, readers, adaptors, wires, protective pipes are not components of the device.

TURNSTILES.us www.TURNSTILES.us Call 303 670 1099 * Text 303 918 9787 patrick.mcallister@turnstiles.us		NAME	
		HR1-M .V.1.0. INSTALATION A	
DATE 01.08.2018			





TURNSTILES.us

www.TURNSTILES.us
Call 303 670 1099 * Text 303 918 9787
patrick.mcallister@turnstiles.us



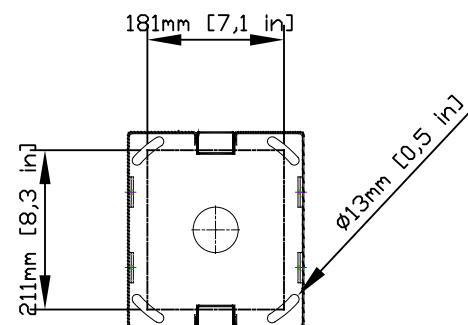
DATE

01.08.2018

NAME

HR1-M

.V.1.0.
FOUNDATION



Note:

1. Drawing for initial planning where the screws holes should be. Dimensions need to be checked on a finished product.

Bemerkung:

Zeichnung zur Vorbestimmung der Anordnung von Schraubenlöchern. Die Abmessungen sind an fertigen Produkt zu prüfen.

ATTENTION:

1. Le schémas pour estimation préliminaire d'enplacement des ouvertures pour les vices. Les dimensions doivent être vérifiées sur le produit final.

Примечание:

1. Чертеж для предварительной оценки размещения отверстий под болты. Размеры следует проверить на готовом изделии.

Uwaga:

1. Rysunek do wstepnego oszacowania rozmieszczenia otworów pod śruby. Wymiary należy sprawdzić na gotowym produkcie.

Attenzione:

1. Il disegno per la valutazione principale del collocamento dei buchi per le vite.

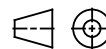
Le misure bisogna controllare su un prodotto pronto.

Atención:

1. El dibujo para calculación principal de distribución de aberturas por tornillos. Los tamaños hay que controlar sobre el producto acabado.

TURNSTILES.us

www.TURNSTILES.us
Call 303 670 1099 * Text 303 918 9787
patrick.mcallister@turnstiles.us



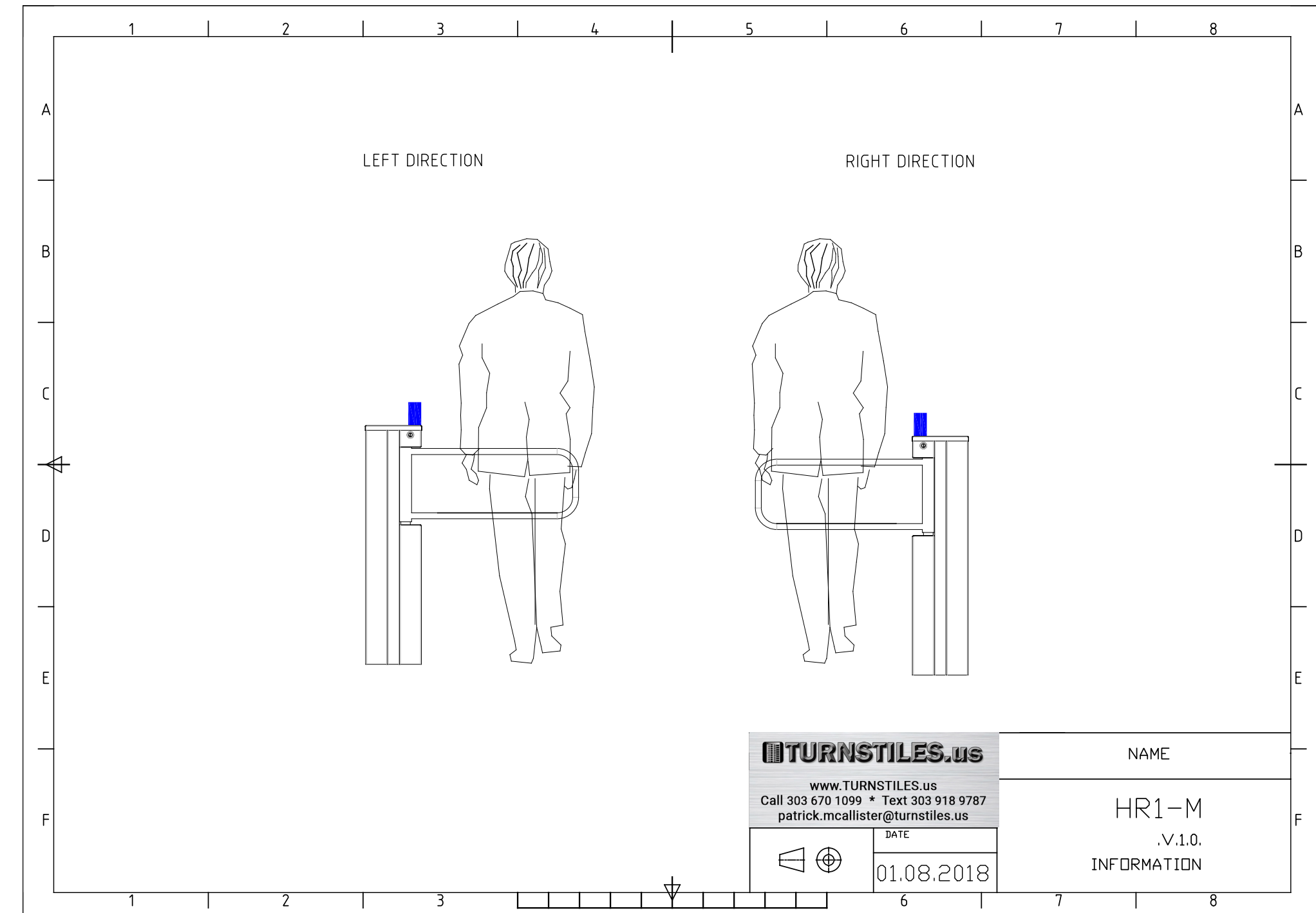
DATE

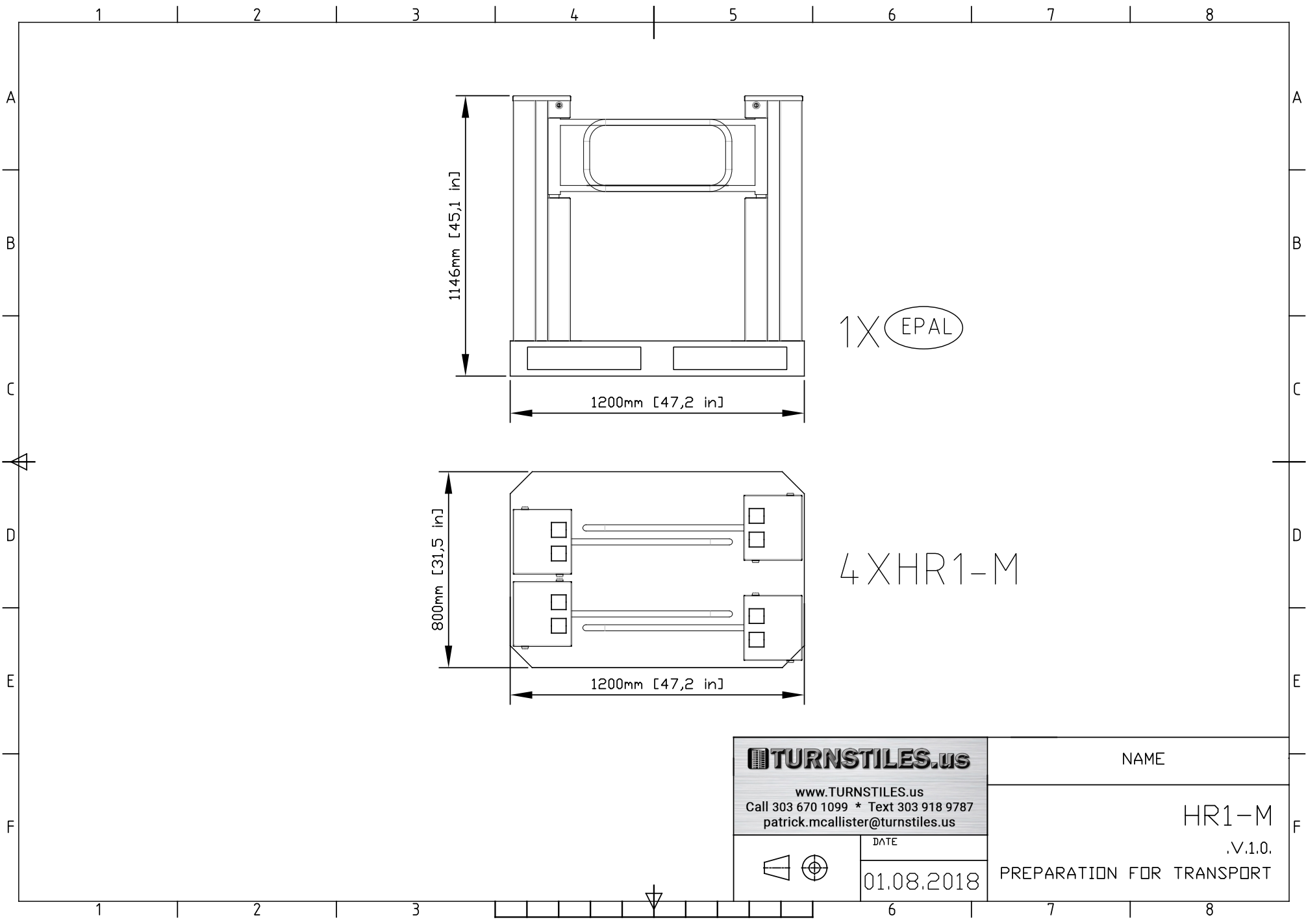
01.08.2018

NAME

HR1-M

.V.1.0.
FOUNDATION A





TURNSTILES.us	
www.TURNSTILES.us Call 303 670 1099 * Text 303 918 9787 patrick.mcallister@turnstiles.us	
	DATE
	01.08.2018

NAME
HR1-M
.V.1.0.
PREPARATION FOR TRANSPORT

