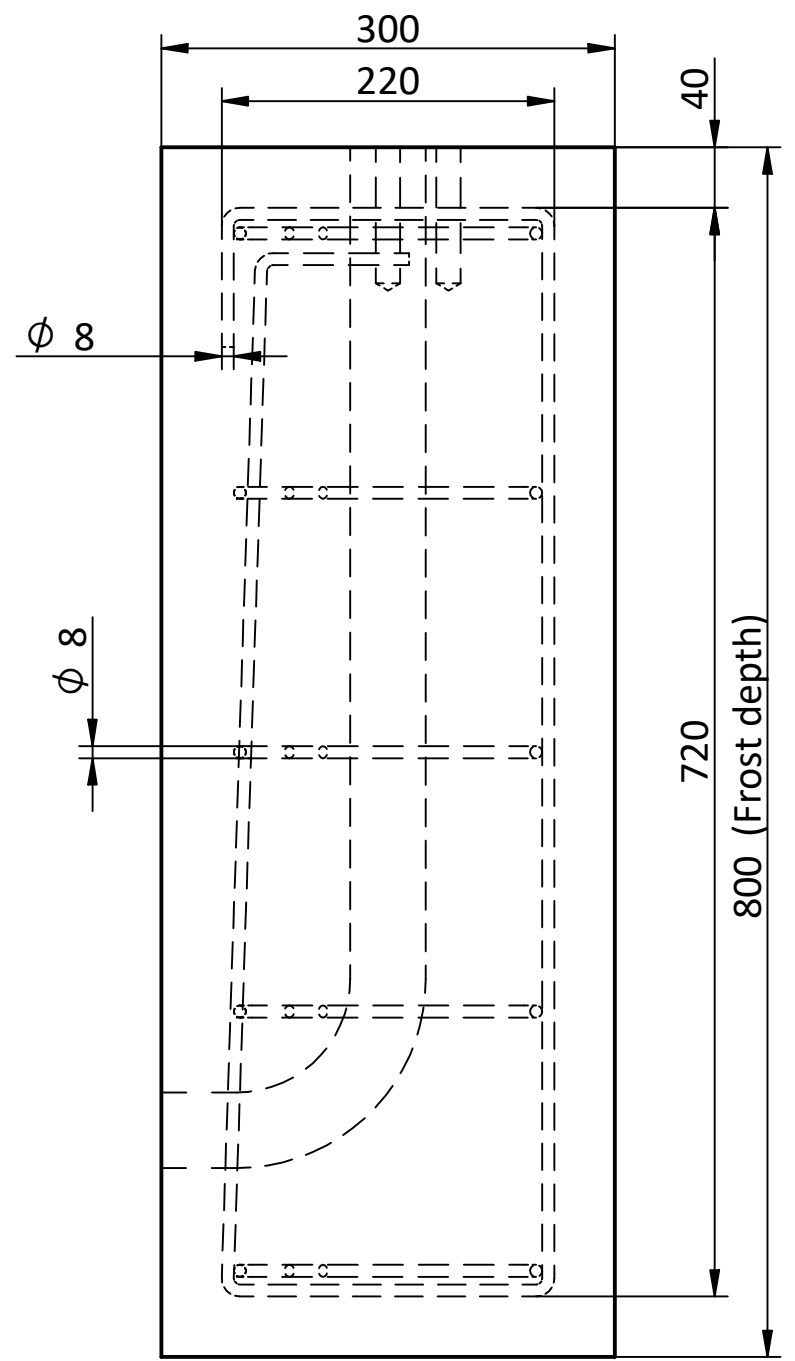
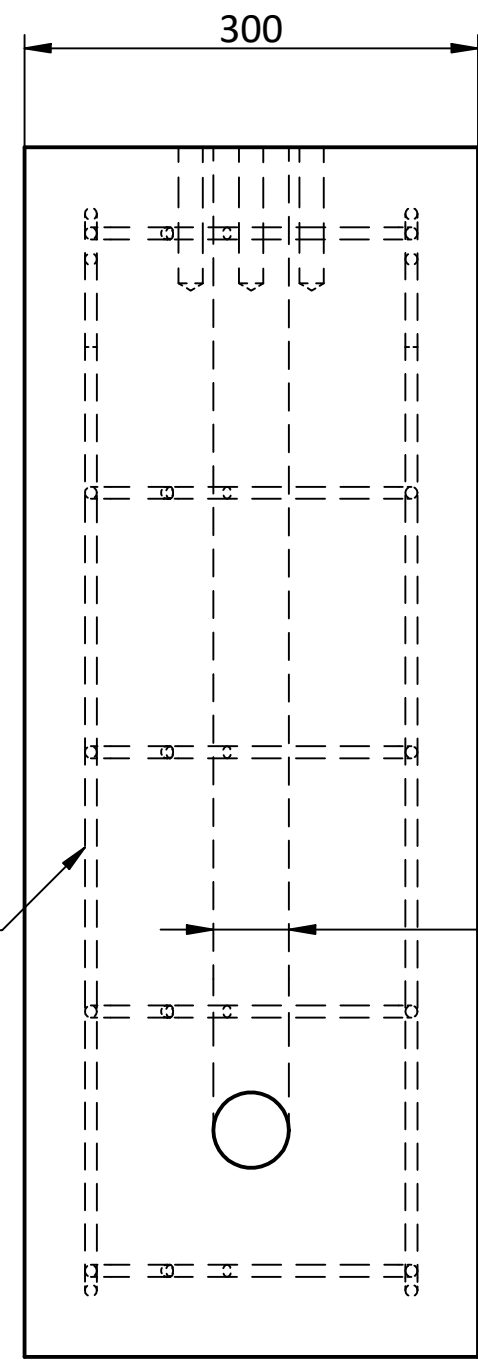


CONCRETE FOUNDATION / INDUSTRIAL FLOOR



Steel reinforcement



max. ϕ 50
Area for conduits

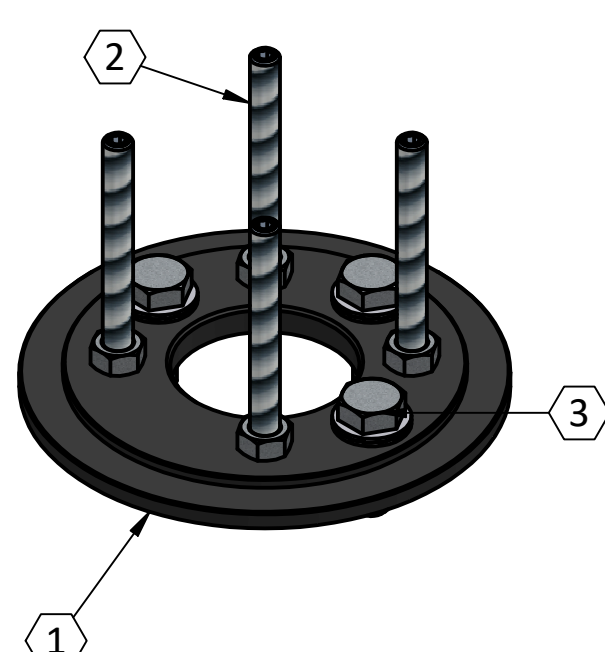
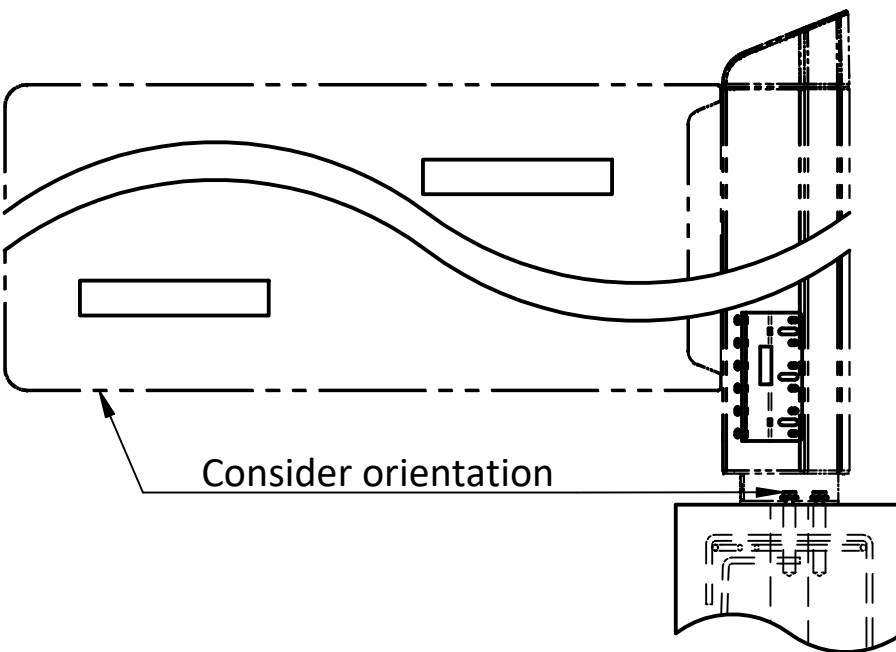
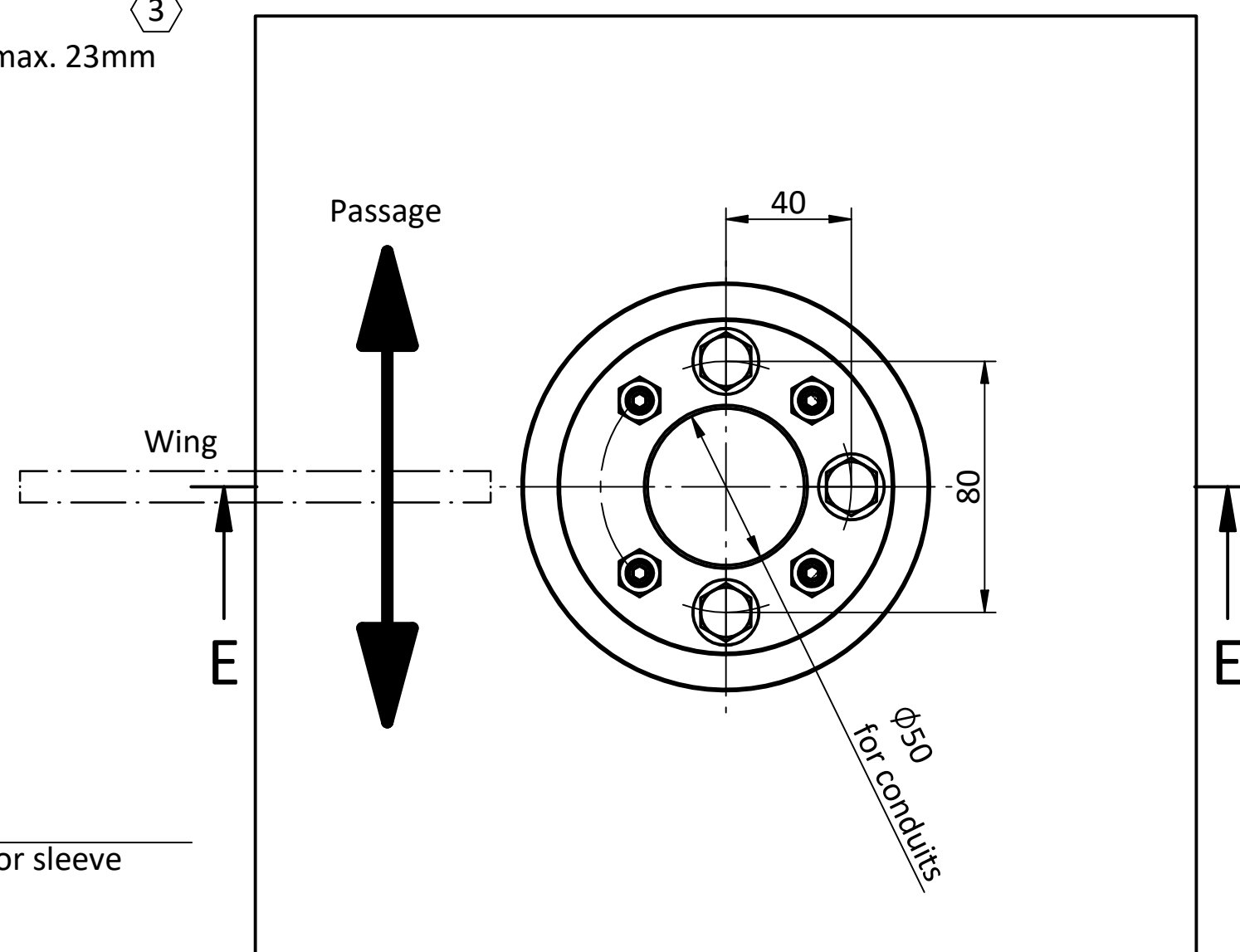
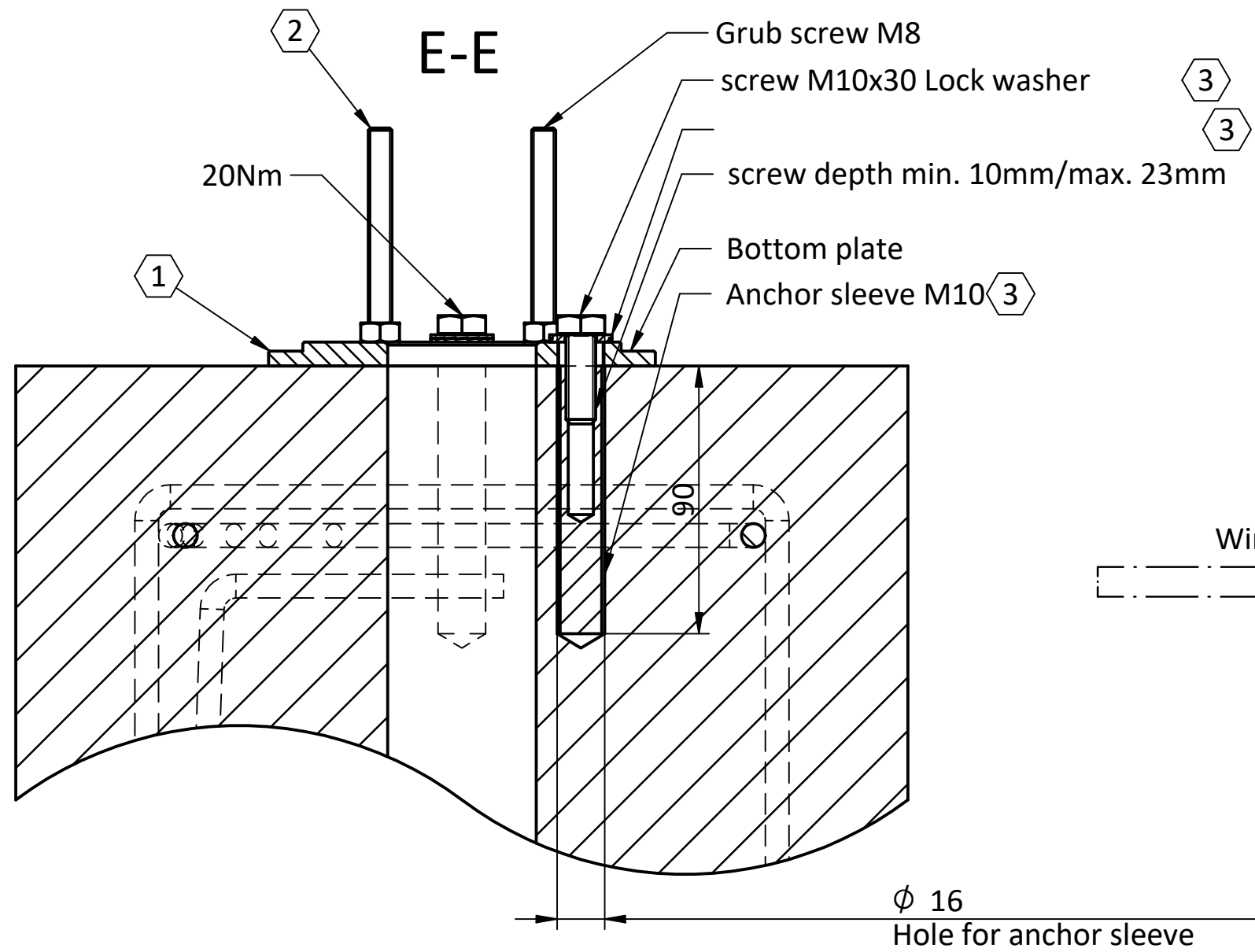
- Concrete min. C20 / 25 XD3 XF2
- Or suitable continuous industrial floor
- For outdoor use foundation down to frost depth with steel reinforcement
- Run power line and data cables in separate conduits

TURNSTILES.us

www.TURNSTILES.us | patrick.mcallister@TURNSTILES.us | 303-670-1099

BOTTOM FIXING

A
B
C
D
E
F



- 1 Use bottom plate as template for drilling holes
- 2 Level the bottom plate with the grub screws
- 3 From BSS103

TURNSTILES.us

www.TURNSTILES.us | patrick.mcallister@TURNSTILES.us | 303-670-1099

1 2 3 4 5 6 7 8

RAW FLOOR

C

B

C

B-B

Raw floor

Threaded rod M10

Hexagon nut M10

4 Adjusting equipment

Screw M10x30

Lock washer

Screw depth min. 10mm/max. 23mm

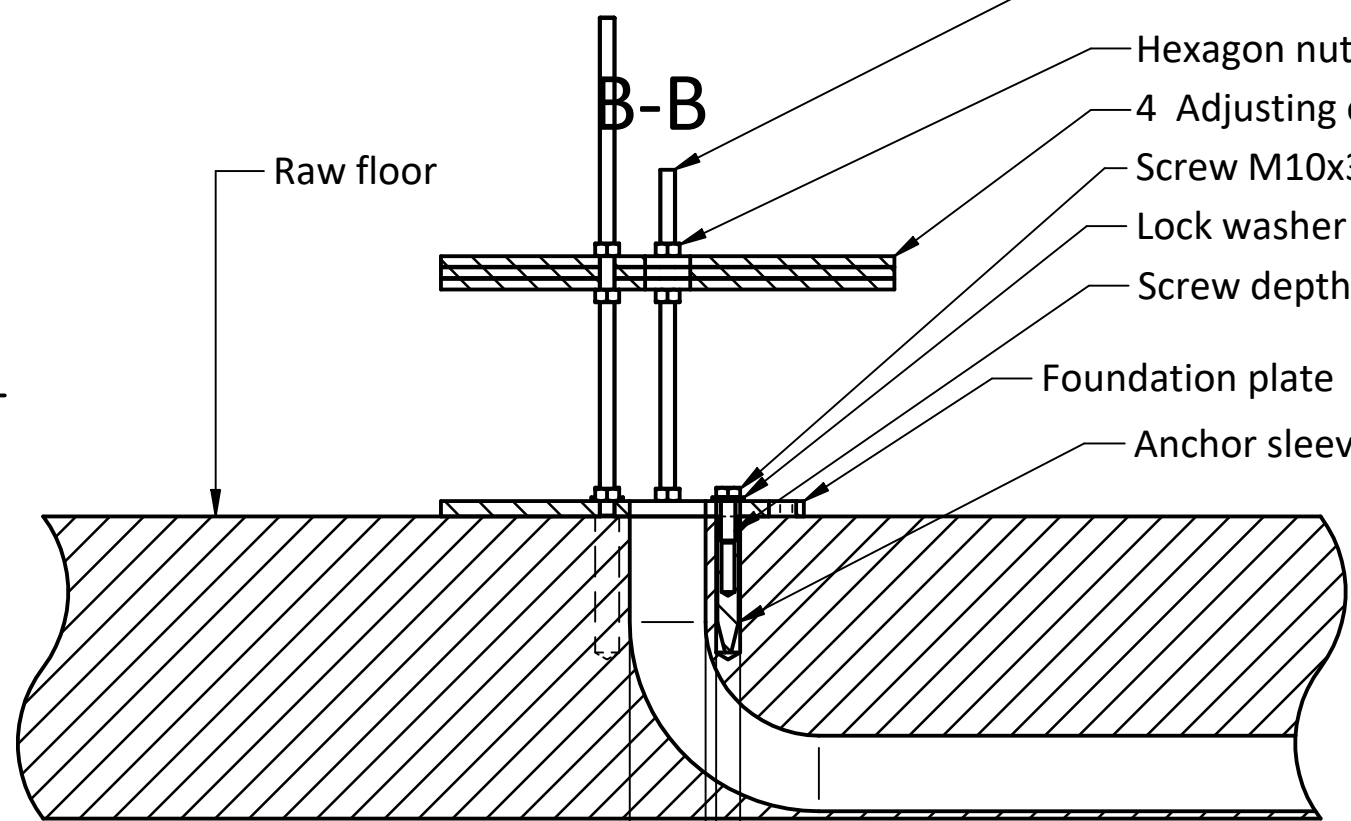
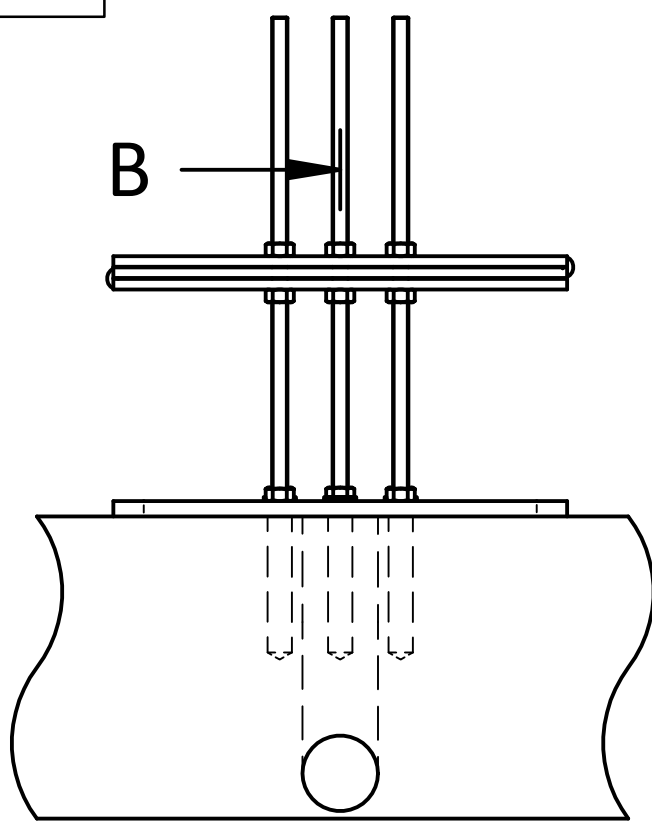
Foundation plate 5

Anchor sleeve M10 3

3 From BSS103

4 From BSSFURA103

5 From FURA103

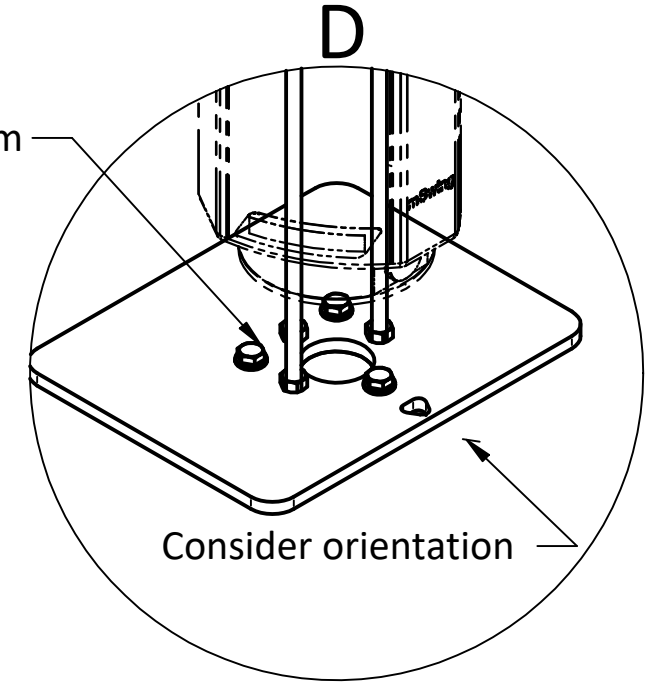
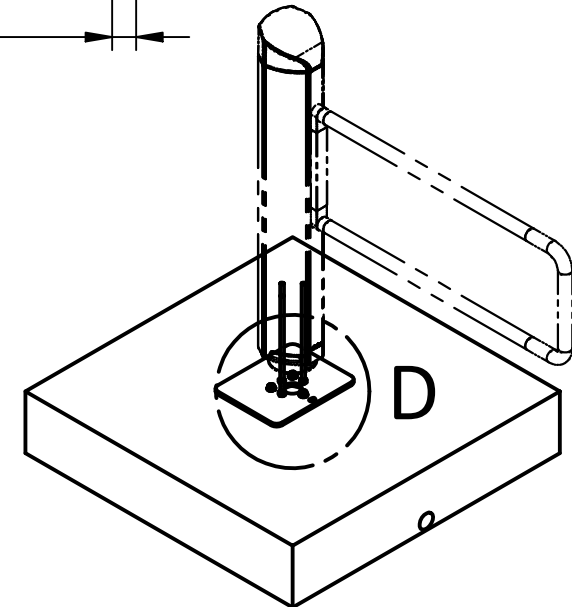
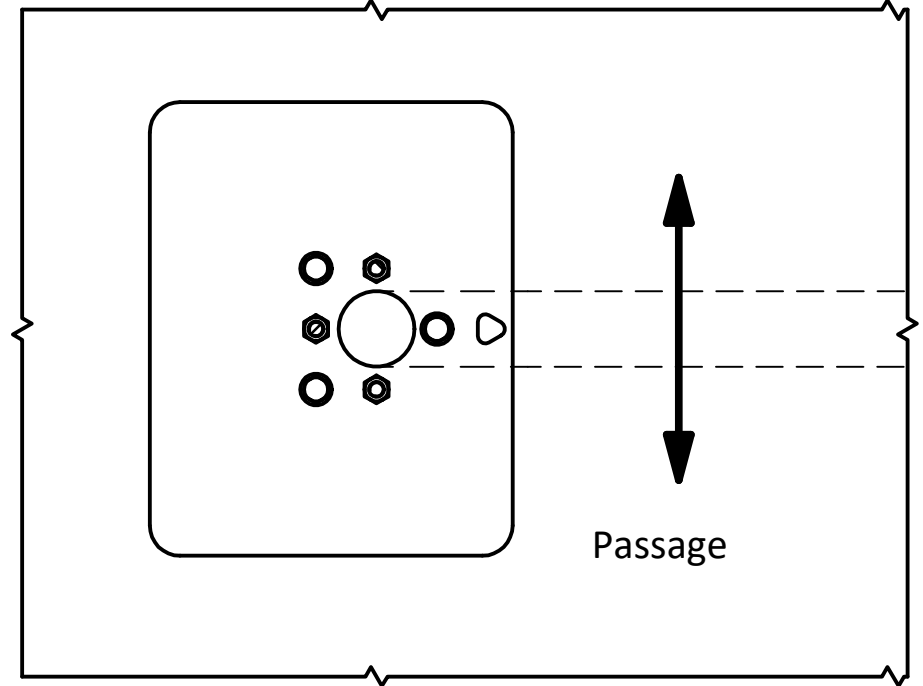


B

C-C
90°

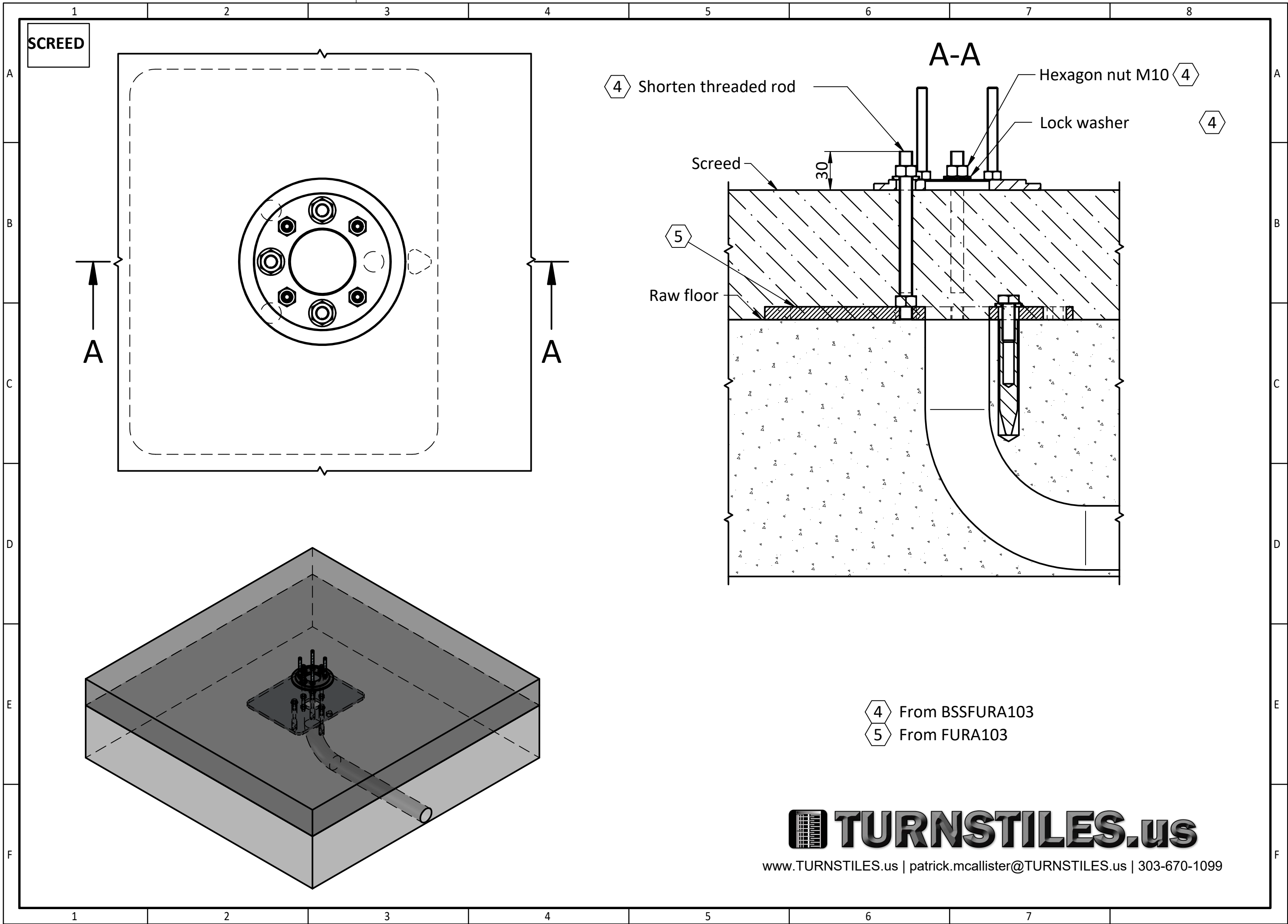
Max. 50
Area for conduits

3x ϕ 16
Holes for anchor sleeves



TURNSTILES.us

www.TURNSTILES.us | patrick.mcallister@TURNSTILES.us | 303-670-1099



SCREED

A-A

4 Shorten threaded rod

Hexagon nut M10 4

Lock washer

4

Screed

30

5

Raw floor

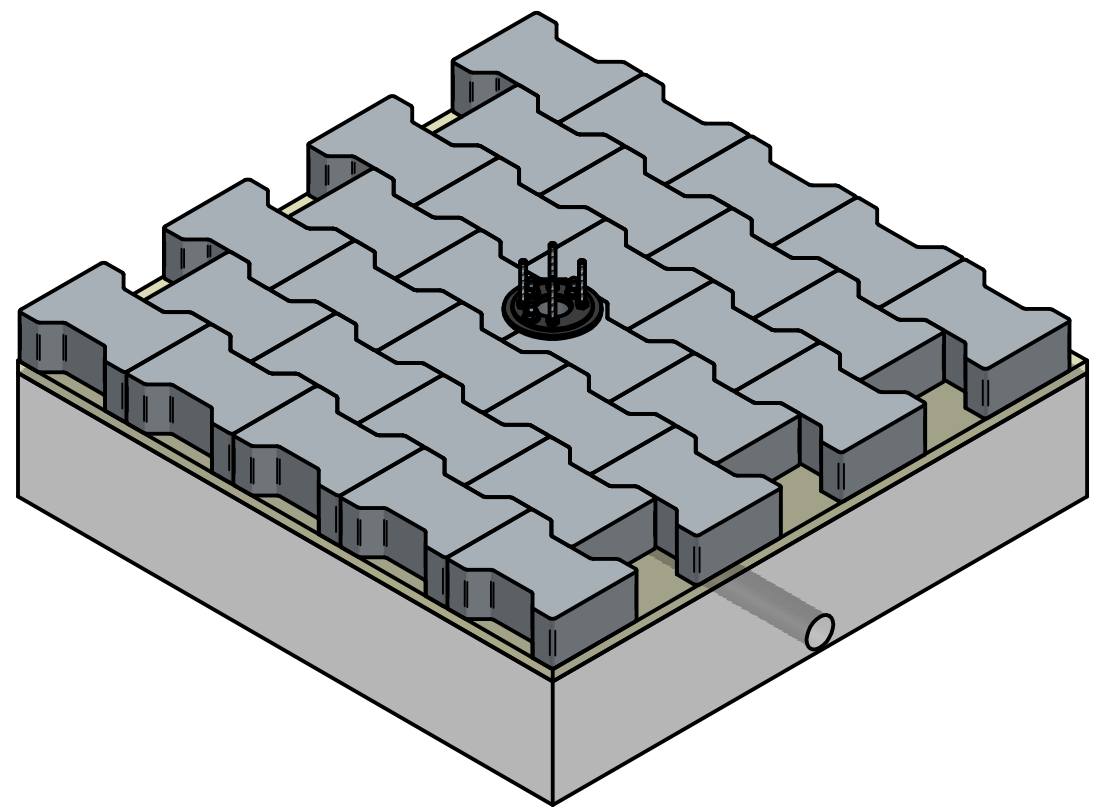
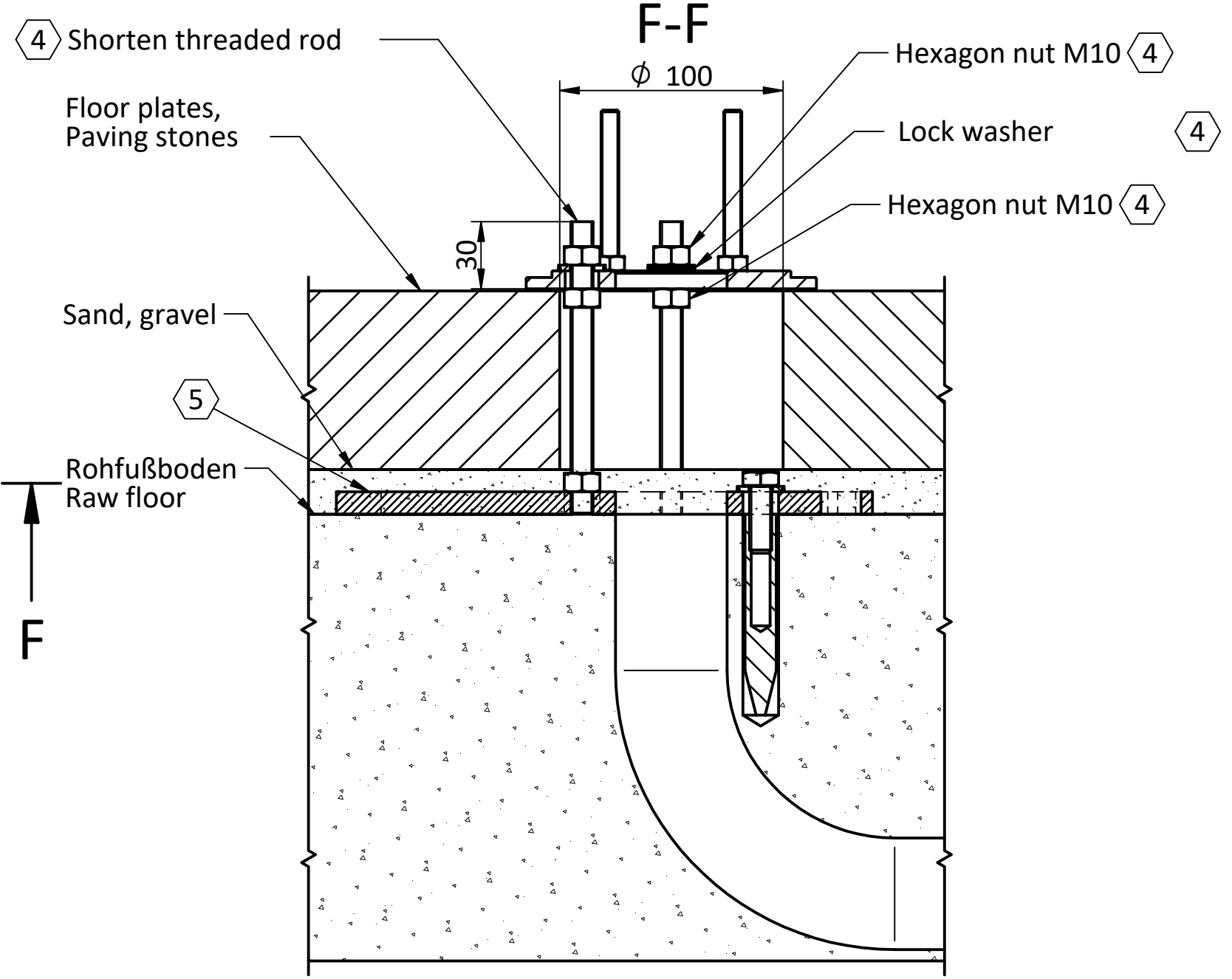
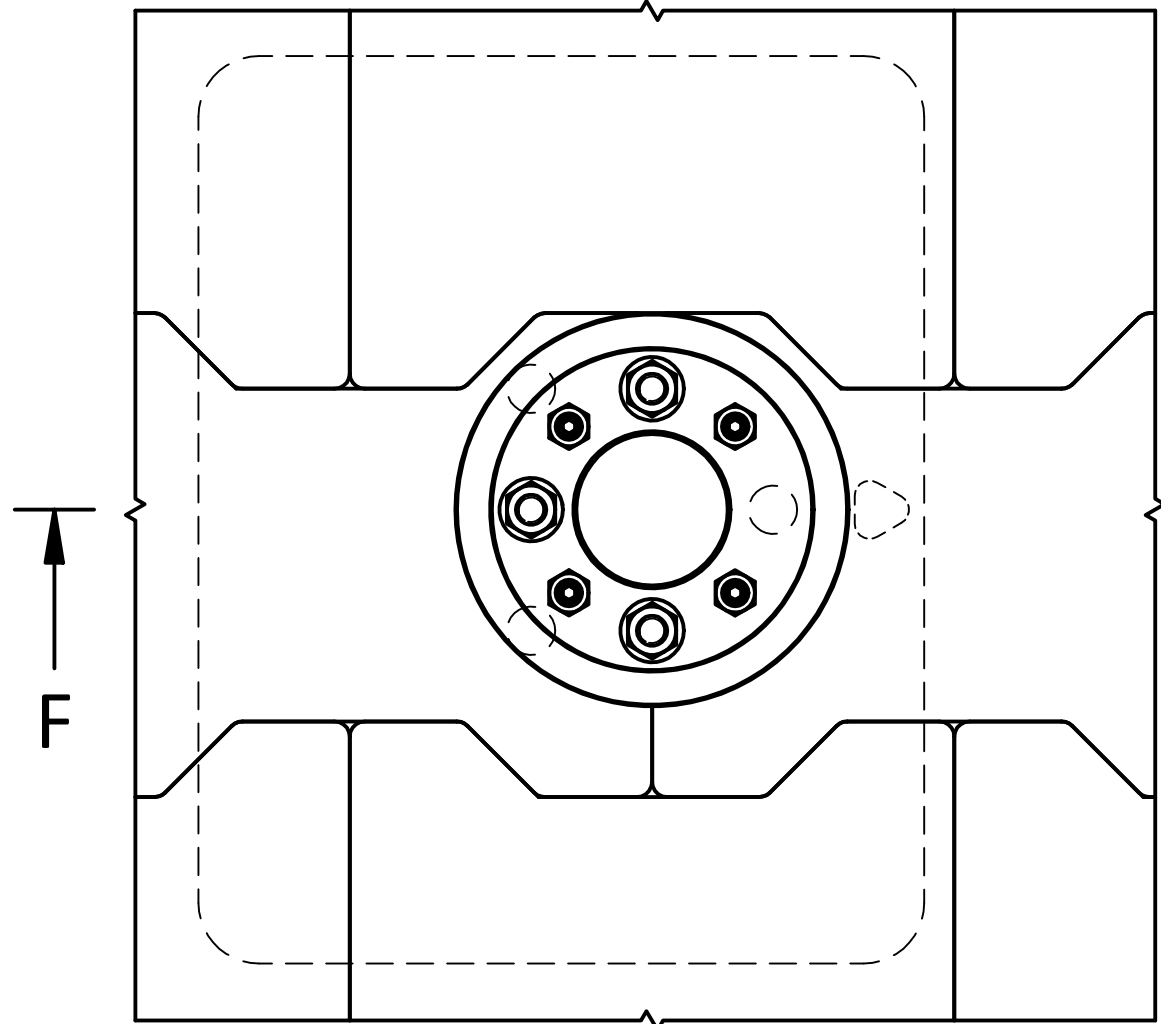
4 From BSSFURA103

5 From FURA103

TURNSTILES.us

www.TURNSTILES.us | patrick.mcallister@TURNSTILES.us | 303-670-1099

FLOOR PLATES / PAVING STONES



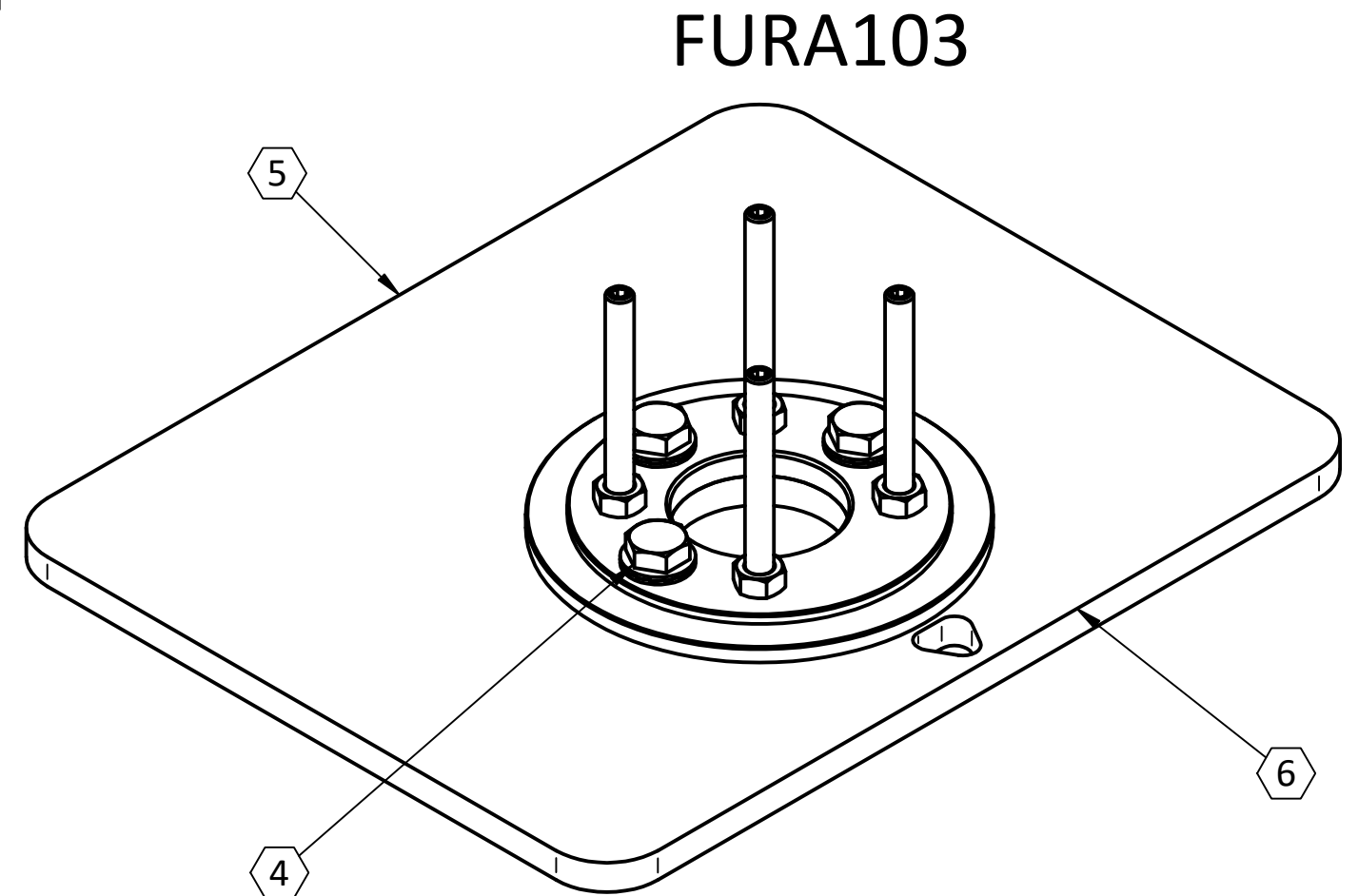
- 4 From BSSFURA103
- 5 From FURA103

TURNSTILES.us

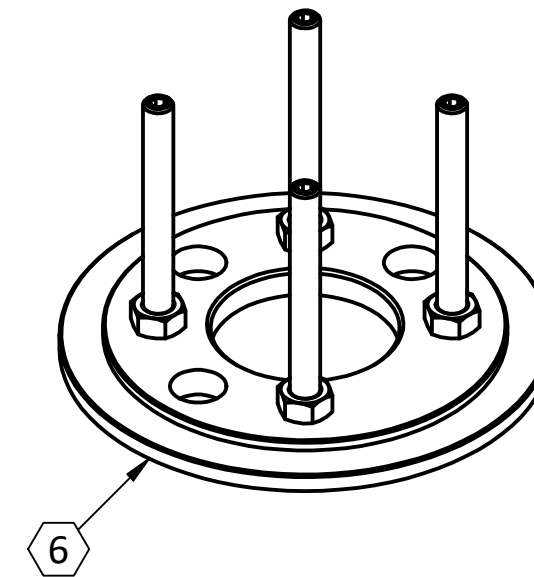
www.TURNSTILES.us | patrick.mcallister@TURNSTILES.us | 303-670-1099

GLUING PLATE

- 4 Aus/From BSSFURA103
- 5 Aus/From FURA103
- 6 Geklebt mit BSSKL100 / Glued with BSSKL100



DIRECT

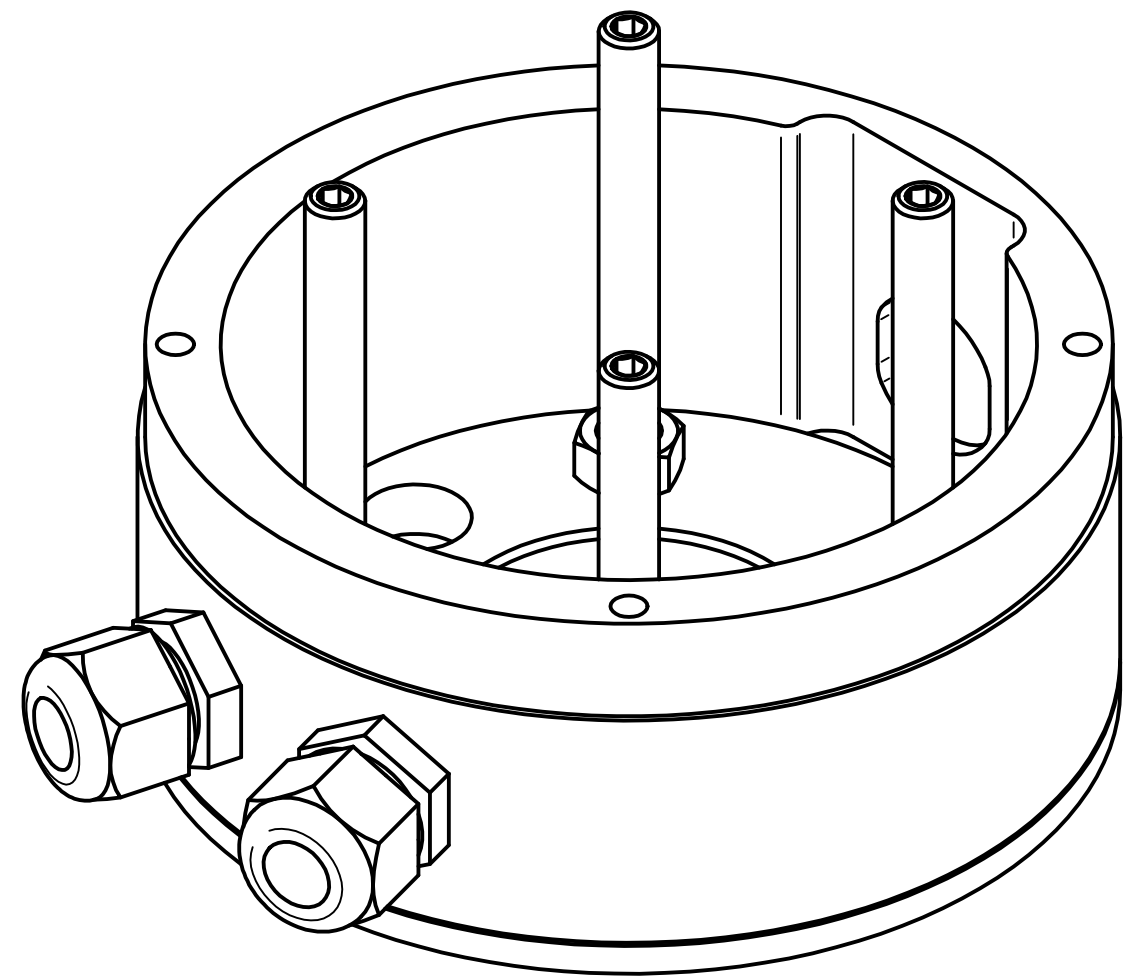
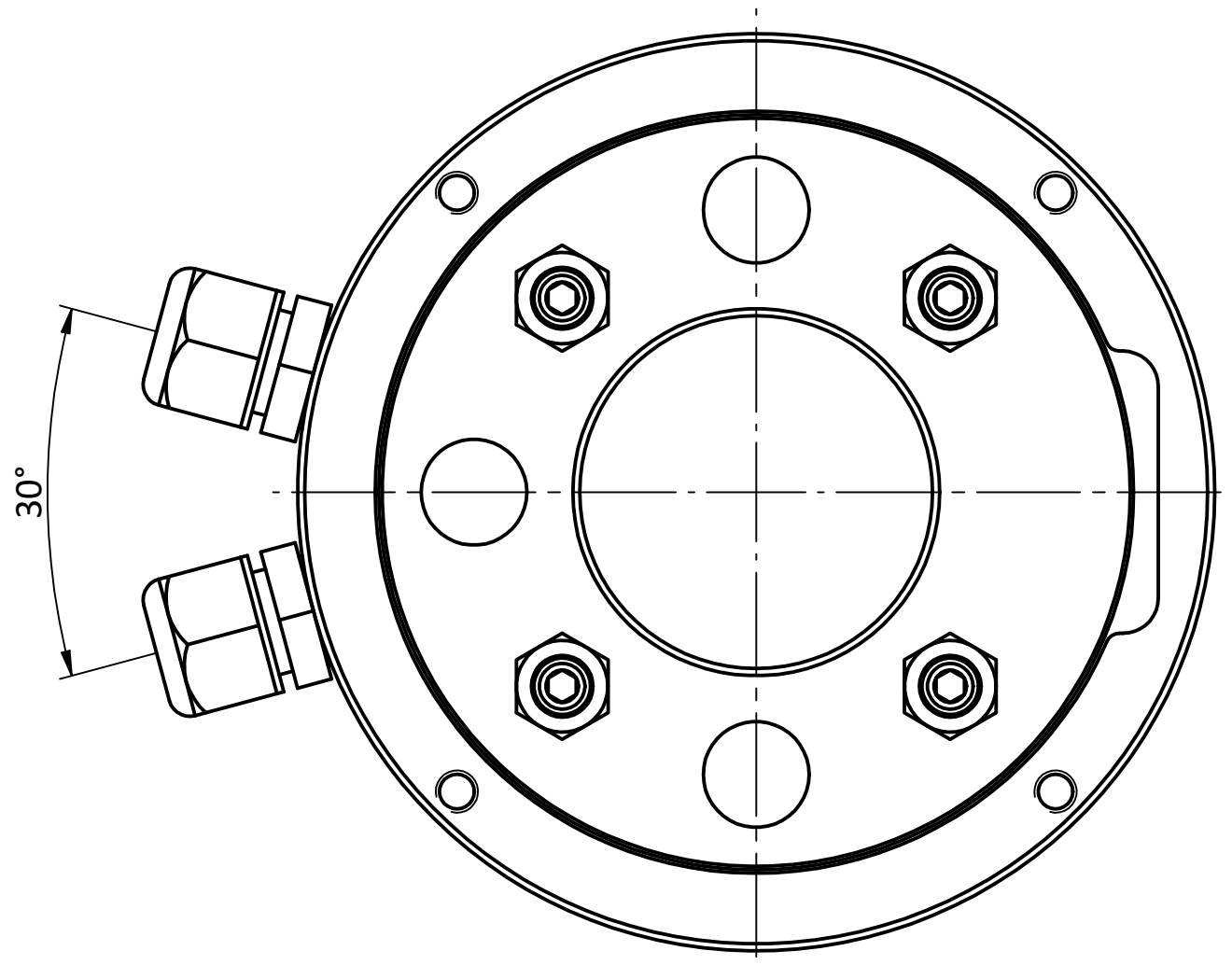
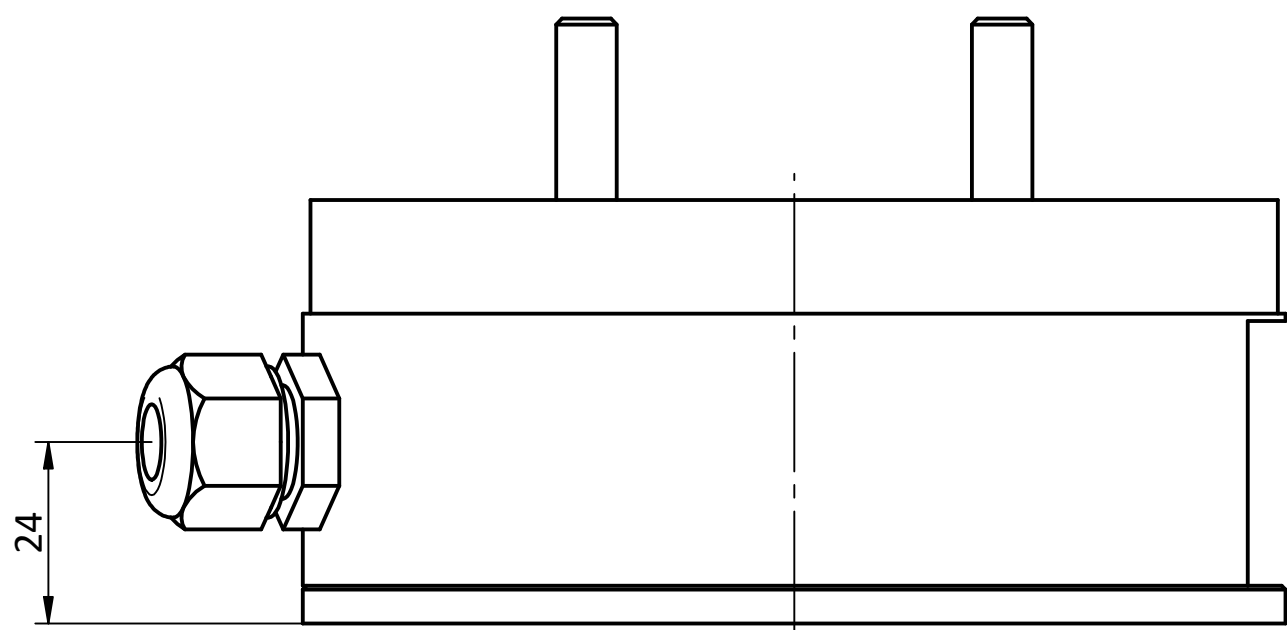


- The bottom plate can either be glued directly to the floor or together with the foundation plate FURA103.
- The floor on which the bonding will be done needs to have a tensile strength of at least 2N/mm^2 .
- A gluing on painted floors, PVC floors, carpet, laminate or parquet floor is not possible.
- We advise against gluing on tiles or stone plates.
- The bonding surfaces of the floor and the bottom plates of the swing door need to be free of grease, lacquer and paint.
- For the gluing the cleaners and adhesives of the gluing set BSSKL100 have to be used.
- Consider the instructions on the used cleaners and glues.

 **TURNSTILES.us**

www.TURNSTILES.us | patrick.mcallister@TURNSTILES.us | 303-670-1099

CABLES SIDWARD



- If it is not possible to install empty conduits in the foundation some holes for cable glands can be drilled into the bottom ring.
- Wires for power supply and data cables need to be ran separately.

 **TURNSTILES.us**

www.TURNSTILES.us | patrick.mcallister@TURNSTILES.us | 303-670-1099