



Intelligent Swing Gate Turnstile

CPW-322ES

1200mm Cabinet Length

Product Manual V3.2



Contents

Product Description.....1

Structure Chart2

Dimension Figure2

Product Parameters2

Product Function3

Product Customization6

Contact Us8

Product Description

Intelligent bridge type swing gate turnstile CPW-322ES is bright, simple and elegant; the housing made of stainless steel is durable; the mechanism modules are imported from international top brands' DC brushless motors and precise positioning encoder, so as to make sure the swing gate can move quickly and accurately, stably and quietly, with low-power consumption, energy conservation and environment protection.

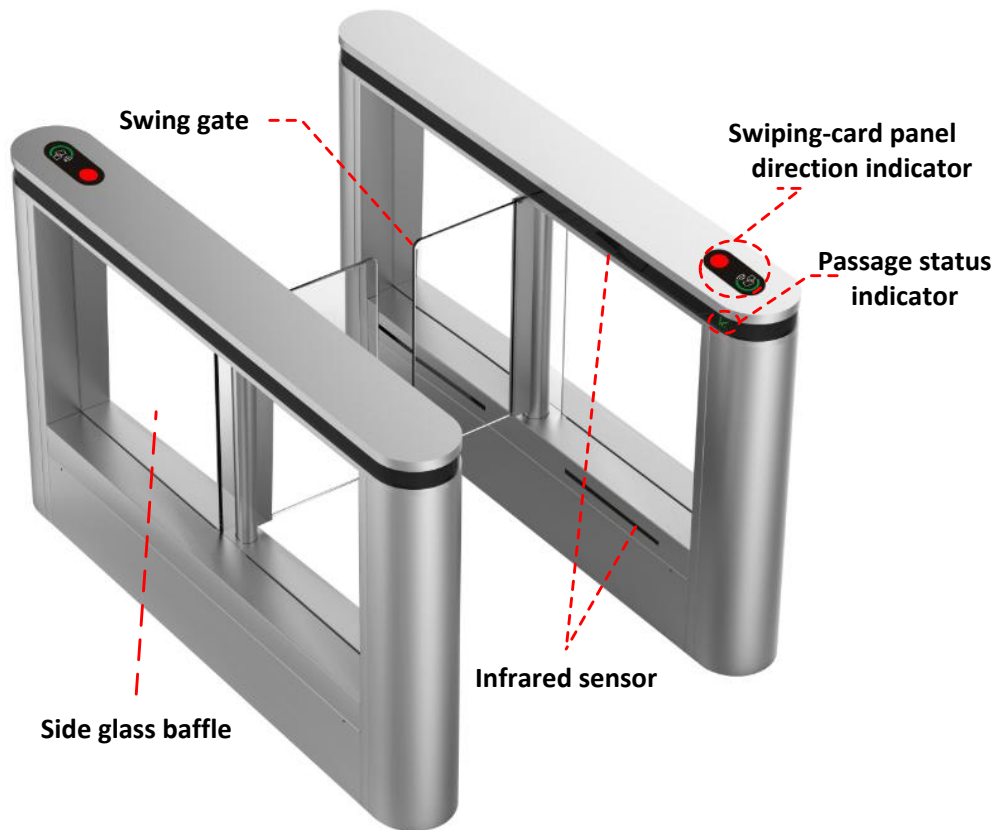
Feature

- ✧ Use DC brushless motor and encoder instead of servo motor to achieve driving and precise positioning function, to ensure that gate can move quickly & accurately and reduce mechanical fatigue of mechanism effectively.
- ✧ By using 10 pairs of military level high-performance infrared sensors and exact algorithms, it can accurately detect the pedestrian's passing position to achieve such as anti-tailgating, anti-reverse passing, anti-clamping etc.
- ✧ Adopt multiple anti-clamping designs, such as infrared anti-clamping, machinery anti-clamping and advanced electric current detection anti-collision in turnstile industry, to maximally protect the personal safety of pedestrians.
- ✧ The wider lane is optional for carrying luggage and wheelchair access.
- ✧ Equipped with the dry contact signal input interface, RS485/RS232 interface, TCP/IP interface (optional), compatible with all kinds of access controllers.

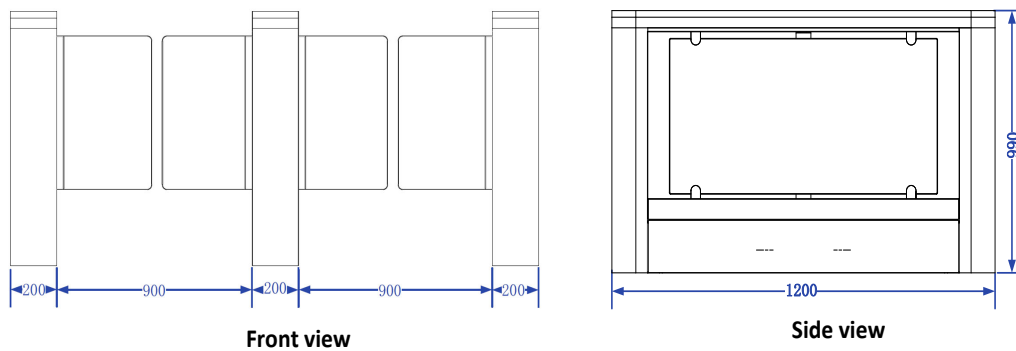
Occasion Applications

Suitable for commercial buildings, subways, airports, customs, exhibition halls, government buildings, financial institutions, clubs and other high-end indoor applications.

Structure Chart



Dimension Figure



Product Parameters

Structure Parameters	
Housing material	304 grade stainless steel
Surface treatment	Brushed finish

Swing gate material	Organic glass
Technical Parameters	
Normal throughput capacity	30 ~ 45 people / min (according to the condition of pedestrians)
Evacuation throughput capacity	60 people/min (according to the condition of pedestrians)
Opening speed	0.3-0.6s
The turning angle	±90°
Operation temperature	– 20℃~60℃
Maximum lane width	900mm
Electric Parameters	
Power supply	100-240VAC , 50/60Hz
Rated power	100W
Input / Output signal	12-channel relay signal output / 8-channel dry contact signal input
Communication interface	RS485 / RS232; TCP/IP interface (customizable)
Driving motor	DC brushless motor
Positioning method	Use the encoder to position the swing gate accurately
Method of motor control	Use high-performance DSP chip

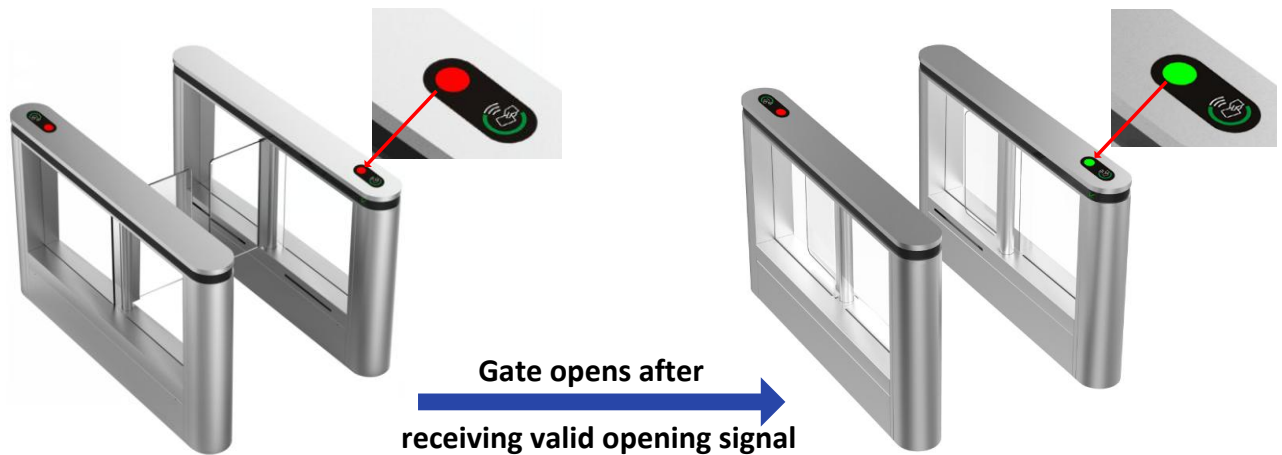
Product Function

● Basic Function

- **Passing mode switching function**: The entry and exit can be set independently **【controlled mode】** / **【 free mode 】** / **【 forbidden mode】**
- **Automatic reset function**: The turnstile will open swing gate after receiving valid opening signal when standby. The swing gate will return to the hindered zero position automatically under the following situation:
 - (1) Within the allowed time, pedestrians have been detected to pass through the passageway in specified direction;
 - (2) Over the allowed time, there is no people passing through the passageway.
- **Self-recovery function**: The swing gates do not return to the hindered zero position because of human intervention. After revoking human intervention, swing gates automatically return to the hindered zero position.
- **Automatic adjustment function**: When the turnstiles need to re-adjust because of mechanical wear,

the main control board can adjust automatically, accurately and conveniently.

- **Memory function of passing requests:** When more than 2 passing signals are given at the same time (including the same direction and opposite direction), the system will remember all the passing requests and finish them one by one. The number can be up to 255.
- **Passing indication function:**
 - (1) Direction indicator: The direction indicator is installed on the top of the housing cabinet to indicate the valid passing direction.



- (2) Passing status indicator: It is installed inside the housing side, indicating whether the swing gates can open after receiving the valid signal.



Turnstile standby;
This direction is in the passing state

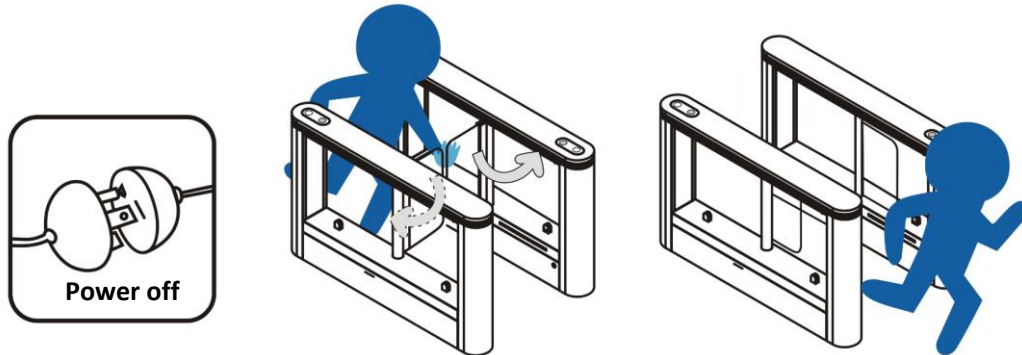


Prohibited passing;
The opposite direction passing is not over yet

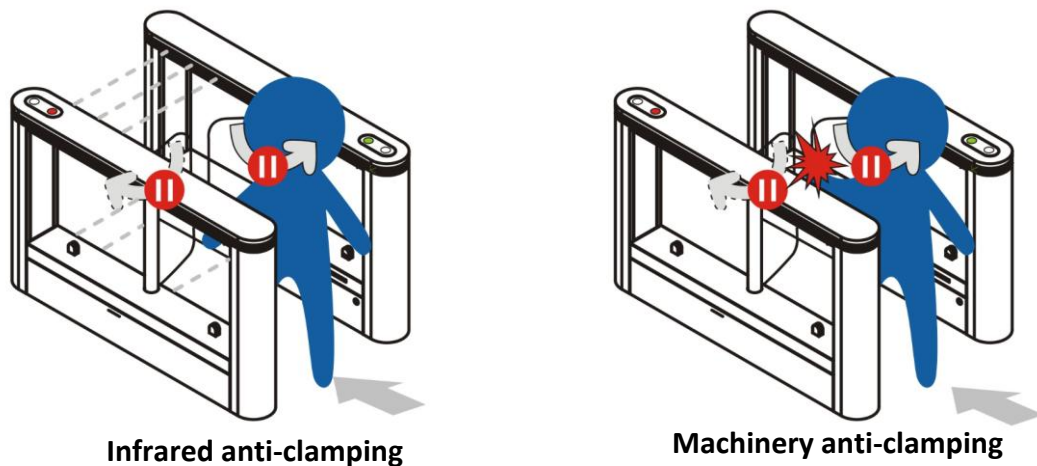
- **Compatibility:** Equipped with the dry contact signal input interface, RS485/RS232 interface, TCP/IP interface (optional), compatible with all kinds of access controllers.
- **Security Design**
- **Self-check function when power on:** The system will self-check routinely and alarm when power on, and intelligently detect the key hardware and function. Find the hidden danger within the shortest

time!

- **Open gate when power off:** Adopt the leading mechanical structure by original creation; the system will open swing gate automatically when power off or manually push the gate to be open so as to evacuate people conveniently, which meets the firefighting requirement.



- **Anti-clamping function:**



(1) Infrared anti-clamping: Install multiple-pairs of infrared detectors near the swing gates' moving area(anti-clamping area). Once people or thing is detected within the anti-clamping area, the swing gate will automatically stop moving; until people or thing leaves the anti-clamping area, the swing gate will continue to move.

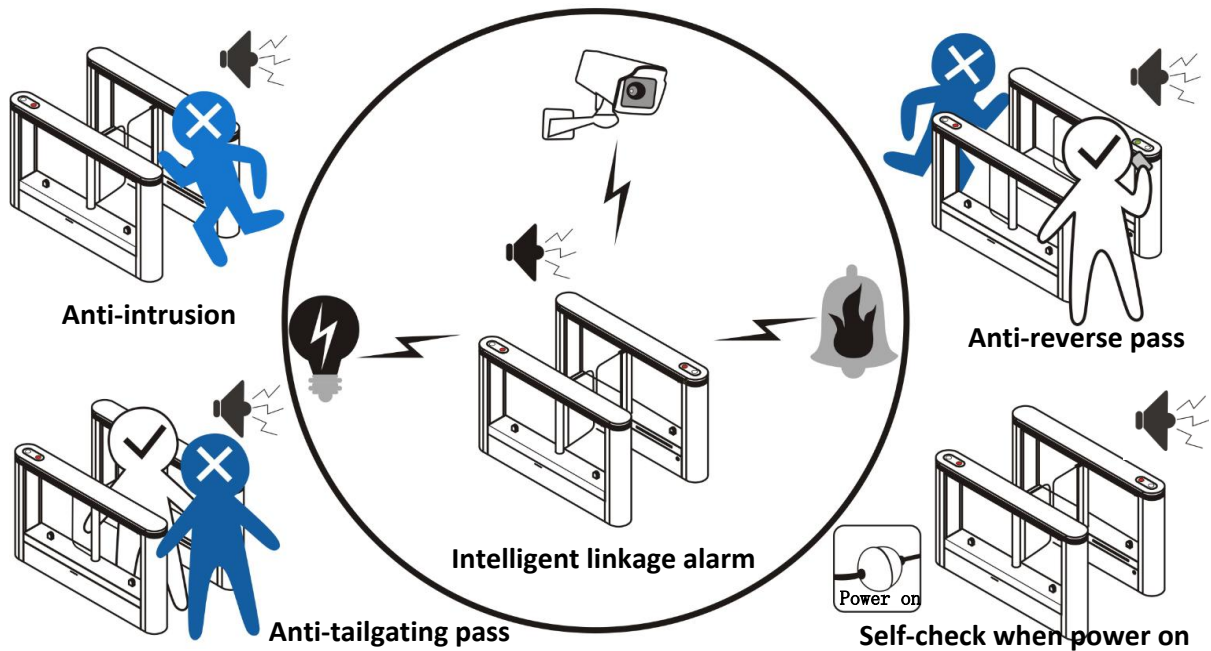
(2) Machinery anti-clamping: The swing gate will automatically stop moving when it encounters obstacles; the impulse force is within the safety range when the swing gate is moving.

(3) Electric current detection anti-clamping: if the gate encounters obstacles during its moving, and the system detects the abnormal current, the motor will stop or reversely move to prevent clamping pedestrian.

- **Anti-collision function:** When the gate is locked, it can support the impulse force within the safety range. The gate can be manually pushed slowly when the impulse force is over the safety range, to

protect the mechanism and pedestrian, and then recovers automatically.

- **Emergency escape function:** Equipped with emergency escape control device, the system can automatically open swing gate to evacuate pedestrians conveniently.
- **Intelligent linkage alarm:** Illegal traffic events can be linked with other alarm monitoring equipment: such as access control systems, video management systems.



Product Customization

● Customized Functions

- Built-in or external counter
- TCP / IP communication

● Gate open button

- External gate open button.
- Install the gate open button with wireless remote control.

● Lane width

- The lane width standard is 650mm, wide is 900mm, custom glass length available for extra wide lanes. Typical space between glass doors ranges 50-100mm.

● Materials

- The material of housing can be 316 grade stainless steel, and the thickness of stainless steel can be customized.
- The material of swing gate can be organic glass, tempered glass, Acrylic and polycarbonate etc. and the color can be customized.

● System Integration

- Integrate with access control system and built-in reader appointed by customers.
- Integrate with visitor access control system.
- Integrate with ticketing system.

★ Notes:

- (1) The product design and specifications are subject to change without prior notice.
- (2) Please contact us directly for special features customization.

Contact Us



www.TURNSTILES.us
patrick.mcallister@TURNSTILES.us
wanita.savage@TURNSTILES.us
303-670-1099