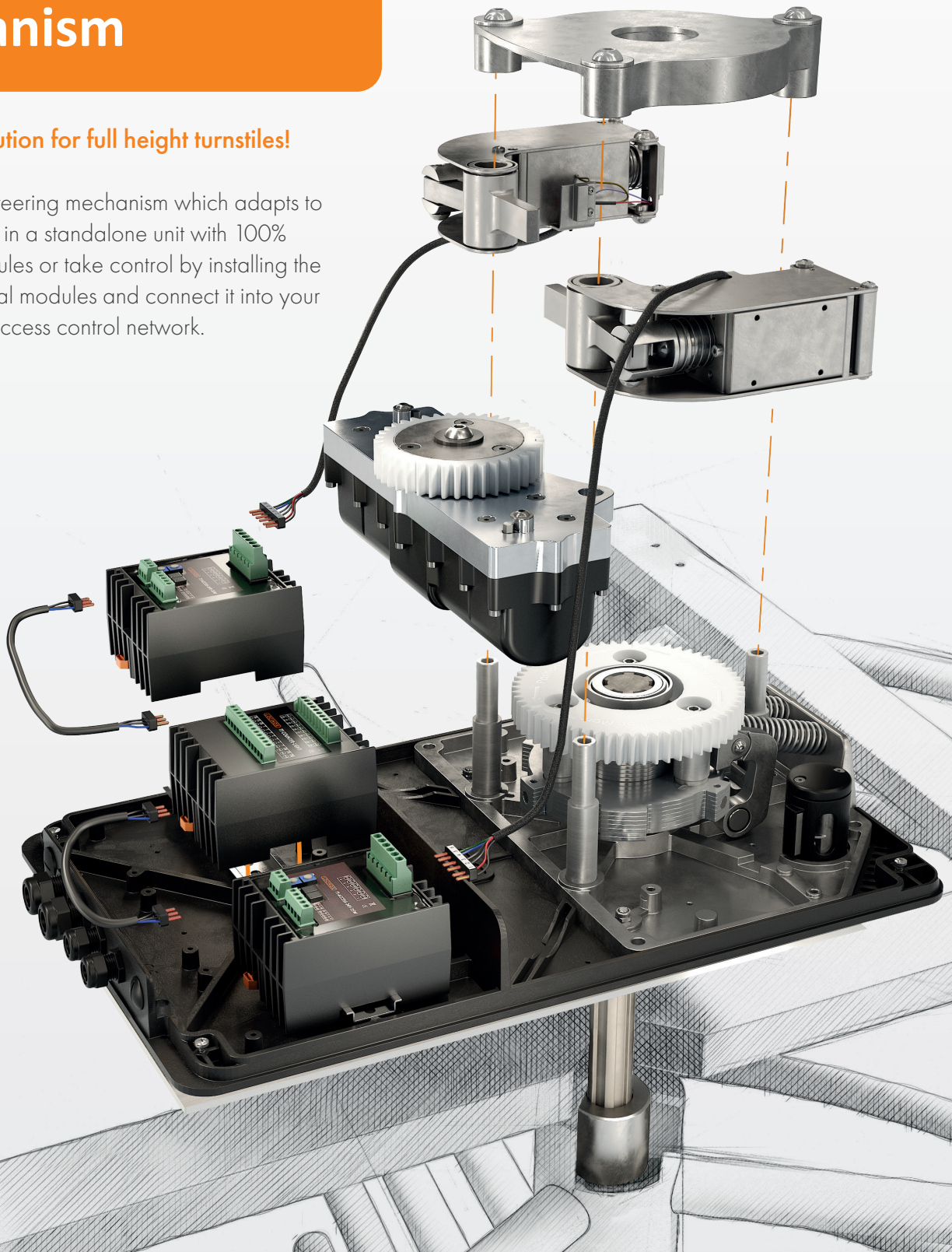


# Modular Turnstile Control Head Mechanism

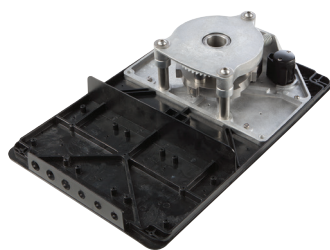
## The perfect solution for full height turnstiles!

A fully modular steering mechanism which adapts to your needs. Put it in a standalone unit with 100% mechanical modules or take control by installing the electromechanical modules and connect it into your new or existing access control network.



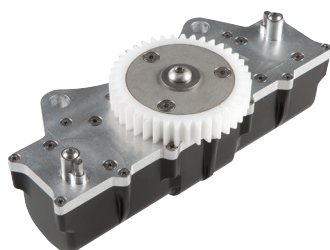
## MODULAR TURNSTILE MECHANISM

Our modular mechanism is a compact, IP55 housing to bi-directionnaly operate any 3-arm turnstile. It is modular expandable to give you full access control in both the incoming and outgoing direction.



### TT-BM3S - BASE MECHANISM

IP55 proof, compact housing (550 x 350 x 170 mm) to bi-directionally operate your turnstile free-turning. Modular expandable!

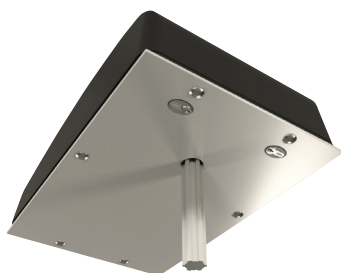


### TT-DM3 - OPTIONAL DAMPING UNIT

The second half is damped progressively thanks to the continuous damping of the mechanism. This results in a fluent motion of the turnstile and avoids the turnstile hitting the users heels. The system is unaffected by temperature changes and will perform in every outdoor situation.

## EASY TO INSTALL

A pre-drilled welding plate can further simplify your installation.



### TT-SSP - STAINLESS STEEL WELDING PLATE

Stainless steel welding plate for a flawless installation of the TURNITEC. With pre-punched drilling patterns and cutouts for cylinders for a guaranteed fast and error-free installation. Also available in black steel. (TT-BSP)



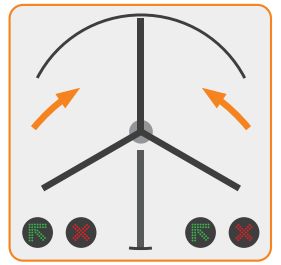
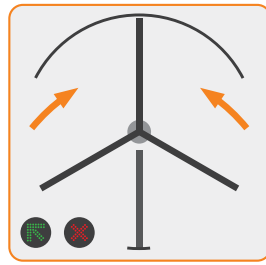
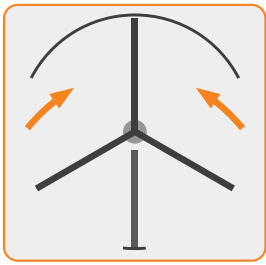
### TT-PIVOT - LOWER BEARING AND FLANGE

Stainless steel bearing in a 17 mm thick aluminium footplate. With bearings for a guaranteed smooth operation. Available with ball bearing or tapered roller bearing.



### TT-SAH - SEAMLESS CONNECTION

Hub for seamless connection of the Turnitec base mechanism with the spline axle and the turnstile.



## POSSIBLE CONFIGURATIONS

Our modular mechanism is a highly modular and customizable system to give you full access control in both the incoming and outgoing direction.

A mechanical override is always provided and getting stuck in the turnstile is impossible due to built-in safety mechanisms.

You always have full control over your turnstile, mechanical or electromechanical. Our Plug&Play modules are quickly installed into the base mechanism and can easily be integrated in any access control solution. We have both a Fail-Open as a Fail-Close solution.



### TT-MM3S - MECHANICAL CONTROL UNIT

No electricity is needed. The turning directions can be easily closed or opened with a cylinder lock. Anti-passback security prevents against simultaneous entrances.



### TT-FC32 - ELECTROMECHANICAL FAIL-CLOSE UNIT

Bidirectional Fail-Close intelligent control. 100% security with minimal staff expense. 24V DC power supply included with integrated display.



### TT-FO32 - ELECTROMECHANICAL FAIL-OPEN UNIT

Bidirectional Fail-Open intelligent control. 100% security with minimal staff expense. 24V DC power supply included with integrated display.



### TT-CL1 - COUNTER AND LIGHT UNIT

Plug&Play module which enables connecting counters and passing light signals in both turning directions.



# Modular Turnstile Control Head Mechanism

## 100% QUALITY

- Tested on 500,000 cycles
- Robust system
- Strong connection with the turnstile spindle
- 100% rust free materials
- No exposed components
- IP55 proof housing
- 24V DC power supply

## 100% SAFETY

- Bi-directionnel access control
- Smooth continuous movement
- Anti-passback security
- Impossible to be trapped in the turnstile
- Manual key-override possible
- Automatic return to start position

## 100% ACCESS CONTROL

- Optional hydraulic damper
- Easy connect of counter and traffic indicator lights
- (Electro)mechanical Fail-Open or Fail-Close solution

## 100% EASE OF INSTALLATION

- Easy to work with compact housing
- Optional pre-drilled welding plate
- Plug&Play electrical connectors
- Modular: units can be swapped out

