

# CVX021

Facial Recognition and  
Temperature Measurement



Product Guide



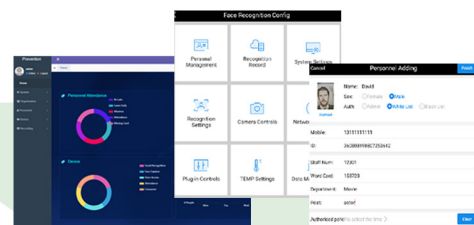
## CVX021 Contactless Facial Recognition Terminal with Infrared Thermometer

The CVX021 is a high-performance facial recognition reader and thermal detection camera all in one. This technology is designed to help prevent the spread of viruses by identifying fever and therefore potential cases. The CVX021 terminal incorporates thermal imaging cameras to spot people with elevated temperatures and can send alerts to users of the software. The versatility and features of the CVX021 make it an excellent choice for contactless biometric access control.

- Spot people with elevated temperatures
- Allow entrance by permitted temperature range
- Identify users while keeping their masks on at all times
- Flag people who aren't wearing protective coverings
- Increase safety and efficiency of screenings

### KEY FEATURES

- Thermal detection and facial recognition reader in one
- Supports recognition even while wearing a mask
- Reads forehead temperature with speed and accuracy
- Links to doors, turnstiles, and access control system
- Records events, takes photos and sends alerts to email
- Built-in alarm, voice output, and color LED light
- MoFace Software included. Expand options with EntraPASS.
- Supports logins, query, set device parameters, data import/export
- Support for multiple recognition modes: Face, Face + Card, Smart Cards



MoFace Personnel Access System Software download included. For enterprise level, we recommend EntraPASS Global Edition Software.

### SPECIFICATIONS

- System: Android 5.1, Windows OS
- Screen: 8 in HD Highlight LCD Touch
- Resolution: 800 x 1280 portrait
- Face Capacity: 20,000
- Accuracy/passing rate: 99%
- Facial Recognition time: 0.65ms
- Facial recognition distance: 12 - 59 in
- Temperature read distance: 8 - 24 in
- Temperature range: 50° F ~ 122° F
- Temperature accuracy: ± 0.3
- Display: °Celsius or °Fahrenheit
- Support card: EM/Mifare (option)
- Relay control: NC/No/Com
- Protection Level: IP54 Rated
- Communication: TCP/IP, Wiegand (26\34)
- Product Dimensions: 11.49 x 5.11 x 1.33 in

### MOUNTING OPTIONS

Shown: Pole Mount, Wall Mount, Table Base, 3'9" Floor Stand  
Also available: Custom enclosures, boxes and stands

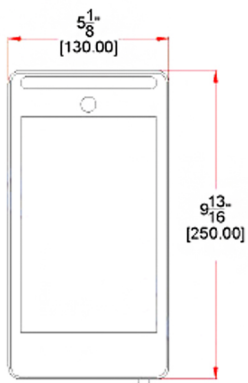




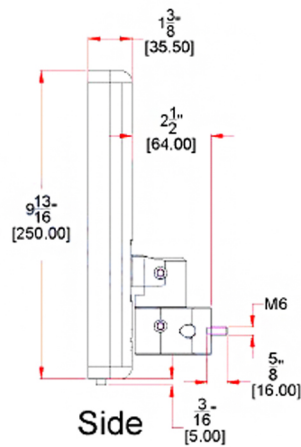
## CVX021 Contactless Facial Recognition Terminal with Infrared Thermometer

### DIMENSIONS

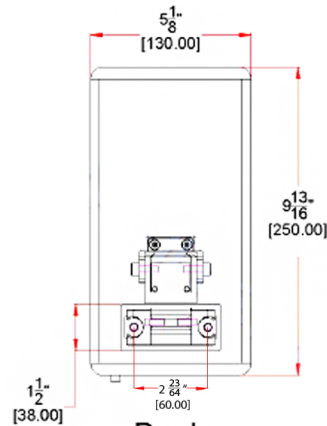
Shown in inches and [mm]



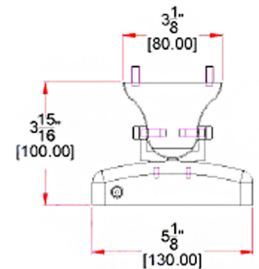
Front



Side

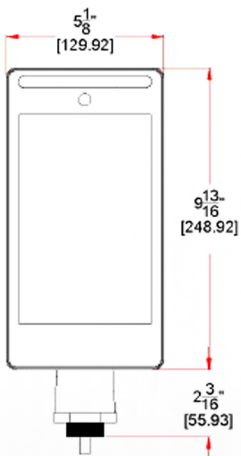


Back

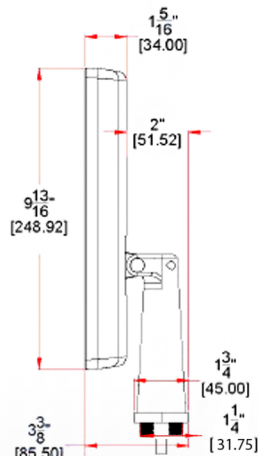


Top

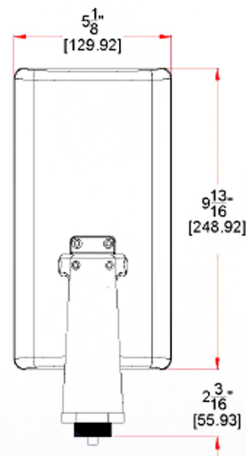
### WALL MOUNT



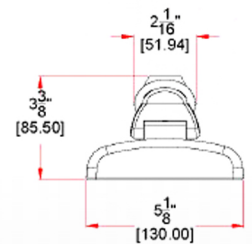
Front



Side



Back



Top

### POLE MOUNT

## MOUNTING OPTIONS

- Standard Pole Mount
- Standard Wall Mount
- Lighted Table Base
- 3'9" Lighted Floor Stand
- 5'6" Stainless Steel Pole
- Mount onto all types of Turnstiles
- Tilt and Lock to the desired angle
- Custom Enclosures, Boxes, Stands, and Installation Services Available



*Standard Pole and Wall Mount:*





# CVX021 Contactless Facial Recognition Terminal with Infrared Thermometer

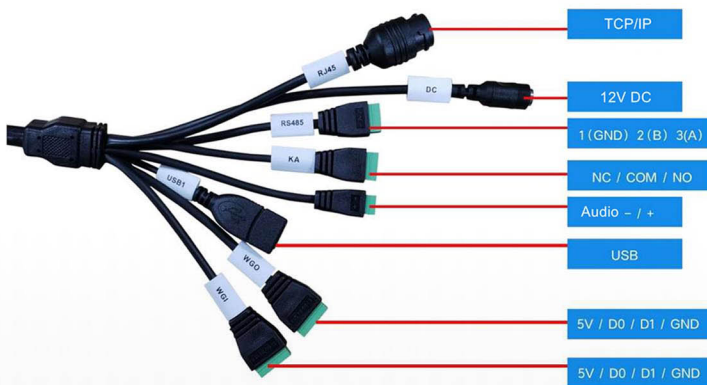
## PRODUCT SPECIFICATIONS

Hardware	description		
Host computer	system	Android 5.1	
	CPU	Rock chip RK3288KQuad-CoreCortex-A17, clocked at up to 1.8GHz, industrial master	
	RAM	2GB DDR3	
	hard disk	8GB EMMC	
camera	RGB	1 / 1.8inch SONY IMX385 Super Star Class Progressive scan 2.1million pixel CMOS image sensor	
	Infrared (Optional)	1 / 2.8inch WDR progressive scan130Megapixel CMOS image sensor, 3 850nmInfrared lights	
	Wide Dynamic	≥ RGB camera120dB	Infrared cameras ≥100dB
	Shot	6mm/ RGB	6mm/Infrared
Display	size	8 inches/Full view/Highlight	
	Resolution	800 * 1280 Portrait	
	Screen elevation	0 to 30 degrees adjustable shaft	
	touch screen	stand by	
performance	description		
Recognition time	≤0.5S		
Of identification	Resident Identity Card, Mi-fare/ NFC card, face		
Face verify the accuracy rate	≥95%		
Passing rate	99%		
Error rate	0.01%		
Facial recognition distance	0.3M ~ 2M; Temperature detector distance: 0.3-0.6m		
Face Capacity	No limit, it is recommended 20000		
Algorithm suitable for race	Full race (yellow / black / white / Latin, etc.)		
Vivo detection	Support, monocular visible in vivo discern		
Masks recognition	Supported alerts for "not wearing masks"		
Batch entry	stand by		
Management Platform	Support, B / S Architecture		

- **System:** Android 5.1, Windows OS
- **Screen size:** 8 inches
- **Resolution:** 800 x 1280 portrait
- **Face Capacity:** 20,000
- **Accuracy/passing rate:** 99%
- **Device response time:** 0.2ms
- **Facial Recognition time:** 0.65ms
- **Facial recognition distance:** 12 – 59 inches (up to 5 feet)
- **Temperature read distance:** 8 – 24 inches (up to 2 feet)
- **Temperature range:** 50° F ~ 122° F (10°C ~ 50°C)
- **Temperature accuracy:** ± 0.3 degrees
- **Units Display:** °Celsius or °Fahrenheit
- **Support card:** EM/Mifare (option)
- **Relay control:** NC/No/Com
- **Protection Level:** IP54 Rated, dust and water-resistant
- **Communication:** TCP/IP, Wiegand ( W26 / W34)
- **Product Dimensions/Size:** 11.49 x 5.11 x 1.33 inches

Interface Features	description	
Switch	A switch input	
	1 channel output gate opening/ Dry contact	
Wiegand	Wiegand input channel 1In, support Wiegand26withWiegand 34	
	Channel 1 output Wiegand, Supports Wiegand26withWiegand 34	
The internet	A RJ45 10M / 100M Ethernet interface adaptation	
USB	USB OTG	
Card Reader	IC card	Optional
	ID card	Optional
	ID card	Optional, ID card reader can support and IC card
Common Characteristics	description	
power supply	DC12V	
Size (WxHxD)	Column	130 * 292 * 34mm
	Wall-mounted	130 * 292 * 34mm
	Floor-standing	200 * 1505.3 * 300mm
Jobs surroundings	-30°C - +75°C, ≤90% RH	
Protection class	IP54	
Mounting	Standing or wall mounted or floor mounted	

### WIRING IDENTIFICATION



Production Development:  
 The tablet used for the CVX021 is manufactured in China and built on an Android Platform, the camera is made in Germany and the software is developed by TURNSTILES.us in the USA.