

Single Door Entry Control



Secure Any Door in your Facility

This system* is quick to install, and communicates with EntraPASS Special, Corporate and Global Edition security software, version 8.40 or higher.

The Parts



Door Controller: The KT-2 controller is a two-reader, Ethernet-based door controller. It manages 2,000 cardholders in stand-alone mode, and 60,000 events.



Door lock: Electromagnetic lock with 1200 lbs. holding force and automatic dual voltage.

Card reader: ioProx Proximity Reader. Compatible with dual encoded proximity cards - 26-bit Wiegand and Kantech XSF. Digital Signal Processing (DSP) ensures quick and reliable card reading.



Weatherproof design for indoor and outdoor applications. Integrated piezoelectric buzzer & bicolor reader LED. Quick connect terminal blocks (P225 and P325 series) allows for easy wiring and saves time and money. Up to 29 inch read range (P600).

Alarm: Indoor/outdoor armored siren with optional strobe light. The full featured siren consists of a single tone that delivers a warble sound output. It features light weight, rust-proof aluminum die-cast housing, a 122 dB output siren driver, and a dual action normally open reed plunger switch for normally closed loop.



Exit Bar: This device features a unique interlocking grip action to secure the door to the jamb without conventional roller strikes or retracting latches. In addition, an interlocking mechanism located in the chassis offers a double interlocking system which makes these exit devices virtually impossible to tamper with, pry or force open.



EntraPASS: Enterprise-level Security Software allows you to manage doors with remote monitoring and extensive integration capabilities.

*Integration options and upgrades are available upon request.

KT-2 Ethernet Ready Two-Door Controller

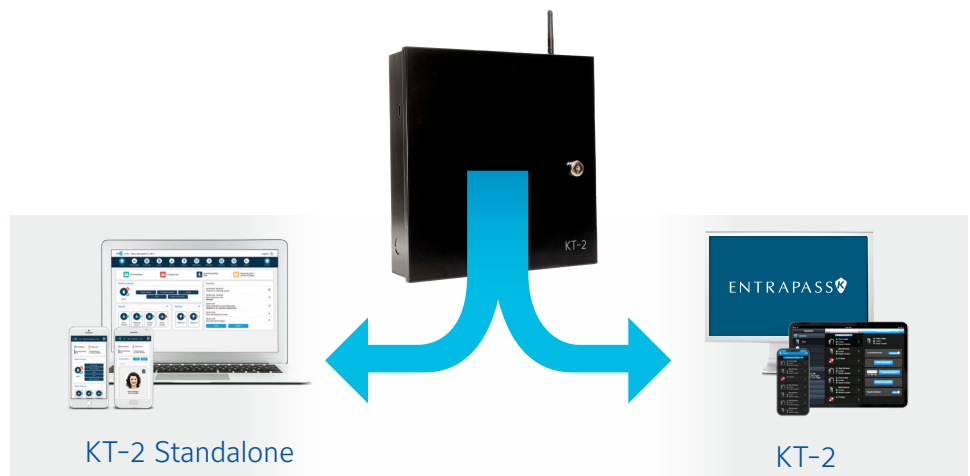
Data Sheet



Key Features

- Configurable in two different modes: Provides advanced access control features when used with EntraPass Security Management Software (using an Ethernet, RS-485, or WiFi connection) or basic door security in Standalone Mode*
- The built-in Wi-Fi antenna helps reduce installation costs when used with EntraPass
- Single capacitive touch button for fast controller enrollment (EntraPASS Security Management Software)
- Flexible power input – Power over Ethernet (PoE), PoE+ or 12 VDC
- End-to-end encryption using Kantech's ioSmart reader & smart card
- Compatible with EntraPass Security Management Software v8.40 or higher

KT-2 Ethernet-ready two-door controller supports two readers and can be configured in two user friendly operational modes. The KT-2 Standalone Mode offers basic two-door security using a simple web browser without the need to connect to a host system. Alternatively KT-2 can be used with the powerful EntraPass Security Management Software to provide more advanced and fully integrated access control features such as Wi-Fi connection. Utilizing the built-in Wi-Fi antenna reduces installation time and costs while providing an ideal solution for projects with challenging infrastructure designs that would require extensive cabling.



* WiFi communication is not available in stand-alone mode.

KT-2 Standalone Mode

Simple and User-Friendly Access Control

Ideal for sites that only need basic door security, the KT-2 two-door controller features an embedded web server which enables it to operate in Standalone Mode – meaning no EntraPass software is required.

One Combined Hardware and Web-based Software Solution

With no extra security software to purchase and install, and using an intuitive web browser for quick set up, KT-2 Standalone provides a cost-effective, yet feature rich alternative for two-door security.

Responsive Web-based Software

Intuitive and responsive web-based software enables you to simply manage and configure your two-door security from anywhere, using a desktop or mobile device.

Standalone Set-Up Wizard

KT-2 Standalone offers the ultimate simplicity in access control installation. Simply power up KT-2; connect to a web browser; follow the quick set-up configuration wizard and your two-door security is up and running in minutes.

Standalone Mode Parameters

Function	Limit
Cardholders	2,000 (1,000 with image/ 1,000 without image)
Door Access	Per door, per user
Card Families or Site Codes	Unlimited
Events	60,000 (Offline Mode)
Operators	2 (Installer, Operator)
Schedules	20 (5 intervals)
Holidays	25
Action Scheduler	100
Monitored Points (Inputs)	4
Auxiliary Outputs	4
Browsers	Safari, Google Chrome, Mozilla Firefox, Internet Explorer, Microsoft Edge
Mobile Operating Software	iOS, Android (No native app)
Integrations	Basic intrusion via relays
Upgrade Path	EntraPass/ hatrrix
Languages	English, French, Spanish, Italian
Firmware version	KT-2 Standalone version 3.03 & higher. (Subject to firmware upgrade fees)

KT-2 Using EntraPass

Advanced and Fully Integrated Access Control

Using EntraPass software a single KT-2 Controller can control two doors or can act as a 'head IP controller', linking together 31 additional controllers under one IP connection in EntraPass. This significantly reduces the amount of IP connections required to EntraPass and reduces programming time in the software, thus creating installation cost benefits and a highly scalable solution.

One Touch for Quick Connection to EntraPass

The KT-2 controller features a capacitive touch-sensitive button for plug and play installation. Simply provide an IP connection, push a single button and you're done. There is no need to manually enter MAC/Serial numbers. With its innovative single button programming, the KT-2 is automatically detected and enrolled onto the EntraPass security management software (v8.40 and higher). Quickly connect using Universal Plug and Play (UPnP) protocol allowing the controller to be network discoverable without requiring the IP address*.

With its Ethernet port for direct network connection, its Power over Ethernet capabilities, the WiFi and its unique single button programming, the KT-2 controller is up and running in just a few simple steps.



EntraPass Web & Go

Combine the KT-2 controller with EntraPass security management software and the EntraPass web and go mobile applications to create an innovative solution that installs quickly, can be managed remotely and provides a superior user experience. Admin users can connect via a web browser or a dedicated app on their smart phone/tablet and manage common security tasks wherever they are.

Alarm Panel Integration

DSC MAXSYS, PowerSeries, PowerSeries Neo and PowerSeries Pro alarm panel data integration can be accomplished by connecting it to the KT-2 controller. Using this controller; EntraPass Special, Corporate or Global Editions are able to receive intrusion events, view the status of zones and partitions, and program users' code. In addition the system can be armed/disarmed (single or multiple partitions) via the reader or manual operation from the workstation.

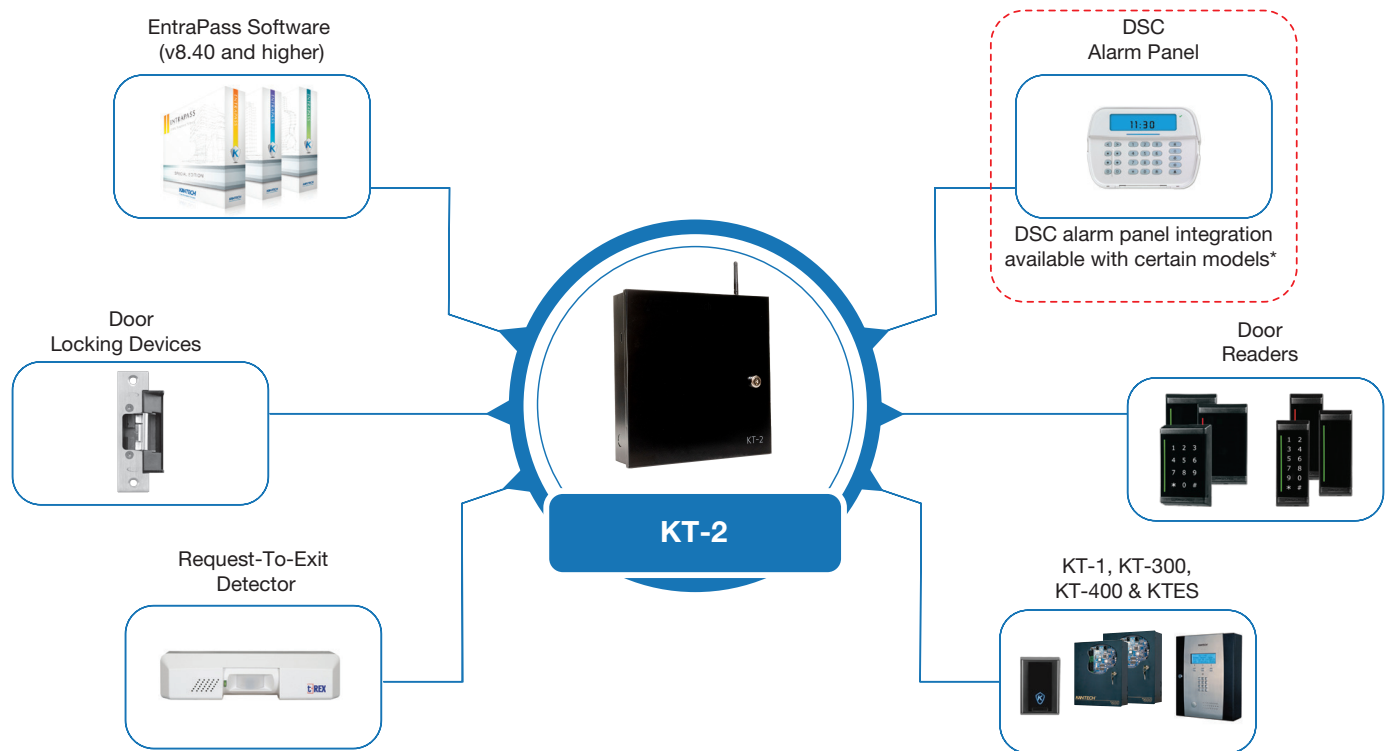
Encrypted and Efficient Network Communication

The KT-2 controller uses 128-bit AES encryption to protect communication. It also acts as a polling device to ensure the controllers communicate with EntraPass only as required, thus reducing network traffic. Flexible options allow KT-2 to connect to EntraPass via:

- On-board IP (Ethernet) port
- RS-485 (COM1) port for communication between the EntraPass Gateway/ Kantech Network Communication Controller (KTNCC) and KT-1/KT-300/KT-400 door controllers.

*Universal Plug and Play (UPnP) feature available when KT-2 configured in either EntraPass Security Management Software or Standalone Mode

Basic System Diagram



Specifications

DC power input	11.3 VDC to 14.0 VDC, 1.5 A
PoE	13 W in, 0.9 A/13 VDC out
PoE+	25.5 W in, 1.2 A/13 VDC out
Operating temperatures	For UL listed installations: 0°C to 49°C (32°F to 120°F) indoor use only For European compliant installations: -10°C to 55°C (14°F to 131°F) Environmental Class II
Humidity level	85% relative humidity non-condensing
Cabinet dimensions	11.3 in. x 11.7 in. x 3.1 in. (28.702 cm x 29.718 cm x 7.874 cm)
Weight of the controller	4.75 lb (2.16 kg)
Reader types	Wiegand, proximity, ABA Clock and Data, bar code, magnetic, integrated keypad, smartcard and others
Reader power output	12 VDC 500 mA maximum, protected and supervised
Monitored points (zone inputs)	8 monitored points (Z1 to Z8), NO/NC without EOL (DRY), single EOL, double EOL and 1 fixed-function tamper input
Points maximum wiring	AWG #22-600 m (2000 ft) For the relevant reader's maximum wiring specifications, refer to the reader's installation manual
Door strike power supervised	750 mA for one output or 1.0 A total (in PoE 13 W, 375 mA each or 750 mA total). Lock outputs are supervised for open circuit or short to ground fault detection
Auxiliary reader outputs	LEDs and buzzer (BUZ), 25 mA maximum each, open collector outputs

Relay controlled outputs	2 onboard Form C relays, 30 VDC, 3 Amps each, 0.6 power factor
Communication ports	1 x RS-232 with RJ-12, 2 x RS-485, 1 x Ethernet 10/100 Base-T with RJ-45, WiFi Note: Use the RS-232 for integrations, with a maximum cable length of 3 m (10 ft).
Wi-Fi specifications	Station mode wireless 802.11 b/g/n (2.4 GHz only) Access point wireless 802.11 n (2.4 GHz only)
Auxiliary power	1.0 A maximum. This is shared with door strike power
Communication speed	1200 to 115200 Bauds (automatic detection) over RS-485 10/100 Mb/s BaseT over Ethernet 1 Mb/s over Wi-Fi
Flash memory	256 MB NAND flash for application, storage and standalone event buffer holding 60,000 events
Network type	IEEE 802.00 b/g/n (Wireless LAN)
Frequency	2412-2471 MHz
RF channels	US/Canada: 1-11 Others: 1-13 Antenna gain at 2.4 GHz: 2.5 dBi (maximum)
RAM memory	128 MB DDR2 for application loading and running
Network autonomy	Distributed data and processing
Certifications/ Listing	United States: Transmission complies with FCC Part 15.247 Regulations for Low Power Unlicensed Transmitters. Transmitter FCC identification: YOPGS2101M FCC compliant to CFR 47, Part 15, Subpart B, Class A; KT-2-M: UL 294 and UL 1076 listed equipment. Canada: Industry Canada IC: 9154-GS2101M. ICES-003 (A)/NMB-003 (A)
AES Encryption	NIST CAVP validation number AES 3092, key length 128

Note: The KT-2 restarts automatically after total power loss and keeps its programming after an unlimited time of power interruption. The design uses flash memory to save access rules. For PoE-powered KT-2 and Class B installations, use a ferrite on the Ethernet cable.

Note: The KT-2 Wi-Fi performance level depends on the type of router that you use and on the installation environment. The KT-2 Wi-Fi access point mode is used for configuration: it requires a mobile, tablet, or laptop that has Wi-Fi capability and a web browser.

Note: Total power for readers, door strikes, outputs, and auxiliary power must not exceed 1.5A at 14VDC.

M68 Series 1200lb Holding Force Magnalock®

Application - 1200 lb. holding force Magnalock with automatic dual voltage. This model offers a built-in wire access chamber and new bracket mount design for a unique method of installation. Recommended for interior and perimeter doors through which criminals could gain entrance to cause substantial economic loss.

Features and Benefits

- Patented instant release circuit - no residual magnetism
- Surface mounts easily with mounting bracket using a minimum of tools
- Internal wire access chamber
- Mounted using steel machine screws into blind finishing nuts
- Brushed aluminum finish
- All ferrous metal surfaces plated to MIL specification
- Automatic dual voltage - no field adjustment required
- Dress covers available
- Lock options include door position switch, LED indicator and anti-tamper switch
- UL Listed

Specification Data

Holding Force: 1200 lbs. [544 Kg.]

Current Draw and Voltage: 250mA at 12VDC
125mA at 24VDC

Operating Temperature: +32 to +110F [0 to +43C]

Shipping Weight: 13 lbs.

Warranty: MagnaCare Lifetime Replacement Warranty

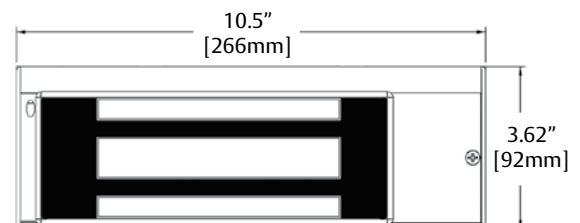
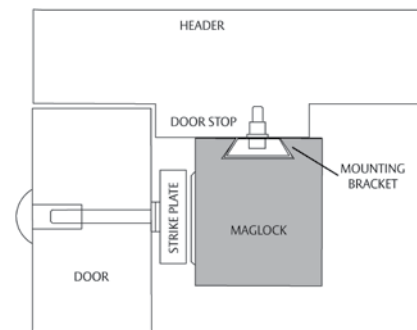
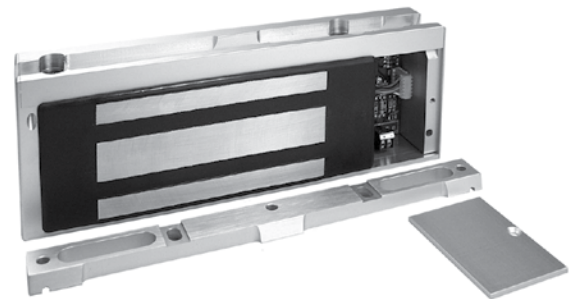
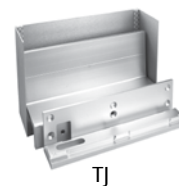
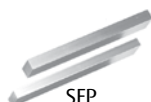
How To Order

Part #	Description
M68	Magnalock Model M68
M68D	M68, Door Position
M68DL	M68, Door Position, LED
M68DLS	M68, Door Position, LED, Senstat
M68DLST	M68, Door Position, LED, Senstat, Tamper
M68DLT	M68, Door Position, LED, Tamper
M68DS	M68, Door Position, Senstat
M68DST	M68, Door Position, Senstat, Tamper
M68DT	M68, Door Position, Tamper
M68L	M68, LED
M68LS	M68, LED, Senstat
M68LT	M68, LED, Tamper
M68S	M68, Senstat
M68ST	M68, Senstat, Tamper
M68T	M68, Tamper

NOTE: An offset strike may be required for proper installation of the M68 in aluminum frame door applications. See M68 offset strikes on next page

Optional M68 Brackets & Accessories

Prefix	Description
SFP	Stop Filler Plate
UHB	Universal Header Bracket
DC	Dress Cover
TJ	Top Jamb Kit (inswing)



The M68 requires 2.25 inches of flat mounting space

PHYSICAL ACCESS SOLUTIONS

ioProx Proximity Readers and Cards



Features That Make a Difference:

- Readers are compatible with dual-encoded proximity cards - 26-bit Wiegand and Kantech XSF
- Kantech XSF cards can be encoded with over four billion unique codes
- Digital Signal Processing (DSP) ensures quick and reliable card reading
- Weatherproof design for indoor and outdoor applications
- Integrated piezoelectric buzzer & bicolor reader LED
- Quick connect terminal blocks (P225 and P325 series) allows for easy wiring and saves time and money
- Up to 73 cm (29 in) read range (P600)

Integration by Design

Kantech ioProx readers and cards provide an ideal access control solution. They are a secure and easy-to-install solution to manage and control access all the while ensuring people, materials and operations are safe. ioProx readers and cards seamlessly integrate with Kantech access control systems including door controllers and EntraPass Security Software.

Encoding & Authentication

All ioProx readers are compatible with dual encoded proximity cards - 26-bit Wiegand and Kantech Extended Secure Format (XSF). The XSF cards can be encoded with over four billion codes, ensuring no duplication. ioProx keypad readers provide a powerful security solution. Combine an ioProx card presentation with a personal identification number (PIN) to support dual authentication of identity.

Presenting Our Credentials

ioProx cards feature proven, reliable technology that seamlessly integrates with ioProx readers. Cards are available in a variety of shapes and materials. They offer a flexible design and can be attached to a key ring, badge clip or lanyard. In the case of disk shaped P50TAG, it can be attached to any non-metallic surface such as a smart phone. And some cards are suitable for dye sublimation printing.

Selecting The Right Reader

ioProx readers can be selected based on mounting options (single gang box or mullion), compatible card formats (26-bit Wiegand or Kantech XSF), read range and authentication (card or card plus PIN).

Read Range

Depending on the model selected and the operating conditions, read range varies from 16.5 cm to 73 cm (6.5 in to 29 in). With its extended range, the P600 Long Range Reader is ideal for parking lots and other long read range applications.

Appealing/Durable Readers

ioProx readers are attractive, compact, weatherized and vandal-resistant, making them suitable for installation in a variety of indoor and outdoor environments. The bicolor reader LED indicates system status. The LED turns green to indicate a successful read when the card is presented to the reader. In addition, the LED can indicate if the alarm system is armed or disarmed. The piezoelectric buzzer provides audible indication of a successful read.

ioProx Card Reader Selection Chart

Common ioProx Card Reader Specifications

Compatible Card Formats. Dual encoded - XSF (Kantech Extended Secure Format) and 26-bit Wiegand
 LED Indicator. Bicolor (Red, Green)

Piezoelectric Buzzer Integrated
 Operating Temperature Range. -35°C to 65°C (-30°F to 150°F)
 Color Black

Model Number/Description	Dimensions (h x w x d)	Read Range	Power Supply	Maximum Cable Distance
P225XSF, P225W26 Mullion Mount	11.4 x 4.4 x 2.1 cm (4.5 x 1.75 x 0.84 in)	Up to 16.5 cm (6.5 in)	4.5 to 14 VDC, max. 45 mA	137 m (450 ft) @ 5 VDC 300 m (1,000 ft) @ 12 VDC
P225KPXSf, P225KPW26 Mullion Mount with Keypad	11.4 x 4.4 x 2.1 cm (4.5 x 1.75 x 0.84 in)	Up to 16.5 cm (6.5 in)	4.5 to 14 VDC, max. 45 mA	137 m (450 ft) @ 5 VDC 300 m (1,000 ft) @ 12 VDC
P325XSF, P325W26 Single Gang Mount	11.5 x 7.1 x 2.1 cm (4.6 x 2.8 x 0.84 in)	Up to 20.5 cm (8 in)	4.5 to 14 VDC, max. 45 mA	150 m (500 ft) @ 5 VDC 300 m (1,000 ft) @ 12 VDC
P325KPXSf, P325KPW26 Single Gang Mount & Keypad	11.5 x 7.1 x 2.1 cm (4.6 x 2.8 x 0.84 in)	Up to 20.5 cm (8 in)	4.5 to 14 VDC, max. 45 mA	150 m (500 ft) @ 5 VDC 300 m (1,000 ft) @ 12 VDC
P600 Long Range Reader	28.5 x 28.5 x 3.2 cm (11.25 x 11.25 x 1.25 in)	Up to 73 cm (29 in)	12 to 28 VDC, max. 1.5 A	137 m (450 ft) @ 5 VDC 300 m (1,000 ft) @ 12 VDC

ioProx Card Selection Chart

Model Number	Description	Dimensions (h x w x t)	Printable	Slot Punch
P10SHL	Clamshell Card	8.5 x 5.4 x 0.1 cm (3.4 x 2.1 x 0.07 in)	No	Vertical
P20DYE	ISO-Thin Card	8.5 x 5.4 x 0.07 cm (3.4 x 2.1 x 0.03 in)	Both Sides	Vertical or Horizontal
P30DMG	ISO-Thin Card with Unencoded Magnetic Stripe	8.5 x 5.4 x 0.07 cm (3.4 x 2.1 x 0.03 in)	Both Sides	Vertical or Horizontal
P40KEY	Key Tag	5.0 x 2.0 x 0.5 cm (1.9 x 0.9 x 0.55 in)	No	Key Ring Hole
P50TAG	Self-Adhesive Round Tag	2.5 cm diameter (1 in diameter)	No	No



P600



P225XSF
P225W26



P325XSF
P325W26



P225KPXSf
P225KPW26



P325KPXSf
P325KPW26



P50TAG



P40KEY



P10SHL



P20DYE



P30DMG

Note that product images are not shown to scale.

Related Products



EntraPass Security
Management Software



KT-400 Four-
Door Controller



T.Rex Request-
To-Exit Detector



Badge Printer

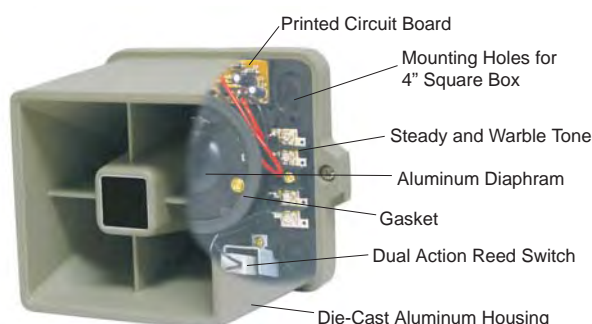
Approvals



Small Footprint Siren and Strobe Alarm



- Indoor/outdoor 15 watt armored siren
- 122dB sound output
- Warble sound output
- Rust-free aluminum die-cast
- Polarized 12VDC input with reverse polarity protection
- Dual-action reed tamper switch
- Up-front screw terminals for easier field wiring
- Suitable with use for most control panels
- Mounts directly to the wall or to 4" square back box
- 60,000 candle power strobe
- Available strobe lens colors: amber, blue, clear, red



The Small Footprint Siren and Strobe Alarm is an indoor/outdoor, self-contained, 15 watt, armored security siren. The full featured siren consists of a single tone that delivers a warble sound output, light weight, rust-proof aluminum die-cast housing, a 122 dB output siren driver, and a dual action normally open reed plunger switch for normally closed loop. The armored siren does not require additional modules, metal boxes, tamper switches, special tools, or training to install and operate.

The device comes completely assembled and ready for installation.

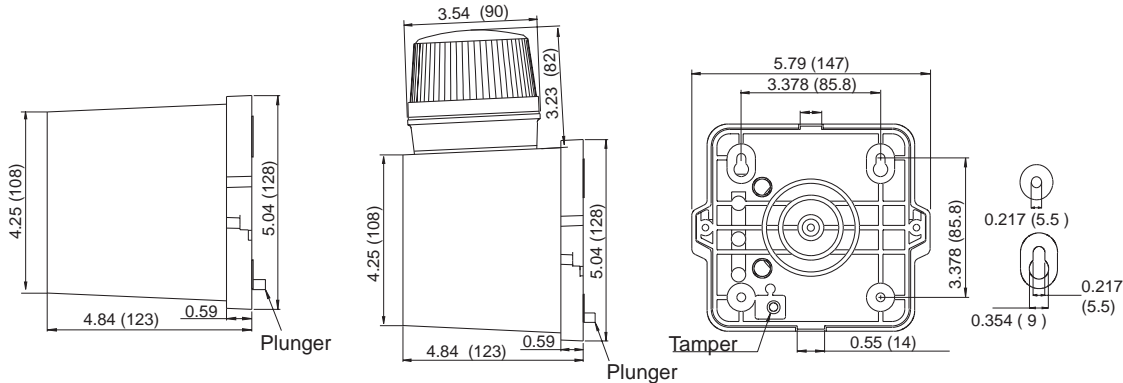
The Siren Strobe combination is also available. It is a high quality, high output siren with a 60,000 candle power strobe with available lens colors: amber, blue, clear, and red.

The device is ideally suited for noisy, heavy machinery areas, warehouses, loading docks, print shops, busy production floors, or for indoor/outdoor applications where high quality and high output warning is required.

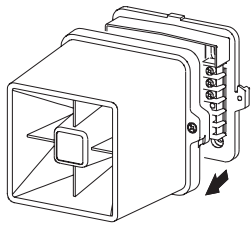
Model Number	Input Voltage	Current Draw	Operating Voltage Range	Strobe Specifications			Speaker Specifications		Operating Temperature Range
				Lens Color	Strobe Candle Power	Flash Rate	Sound Output	Tamper Contact Capacity	
51	6 -12V DC	.56 Amps	4.8 - 14.4 V DC	-	-	-	122dBA	0.3A @ 12V DC	14 °F - 140 °F -10 °C - 60 °C
51SA	12V DC	0.67 Amps	9.6 - 14.4V DC	Amber	60,000	20 - 100 times/ min.			
51SB				Blue					
51SC				Clear					
51SR				Red					

Small Footprint Siren and Strobe Alarm

Dimensions: inches (mm)

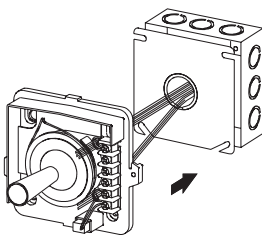


Installation



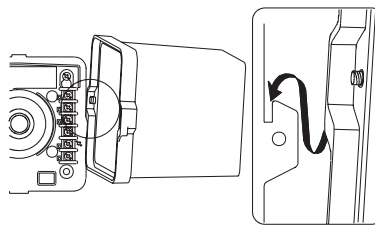
Step 1

Separate the housing from the back plate.



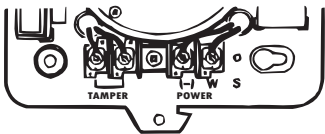
Step 2

Mount the back plate directly to the wall or to a 4" square box.



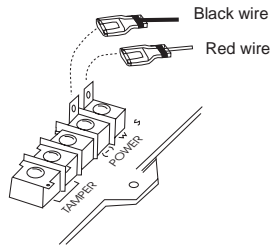
Step 3

Place the housing over the built-in hook to free your hands during wiring.



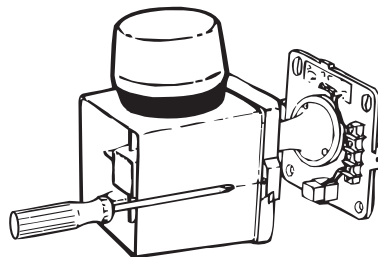
Step 4

Connect the siren wires to the terminal strip as indicated above, and re-install the cast iron housing.



For SSX-51S

Connect the Red wire from the strobe to the (w) terminal and the Black wire to the (-) terminal on the back plate as indicated.



Step 5

Re-install the cast iron housing, making sure it aligns properly with the back plate before securing the screws.

Exit Devices - 120/1200/1300 Series

High Security Exit Devices

120 Series

Switch Bar
(no latch or strike)

1200 Series

High-Security
Mechanical
Rim Exit Device



1300 Series

High-Security
Electric
Rim Exit Device



Lever Trim 08

Key locks or unlocks trim
UL Certified to
ANSI/BMHA
A156.3-1994,
Grade 1



Pull Trim 03P

Entrance by key retracting
latch bolt



Patented Interlocking
Strike and Latch



Features

1200 / 1300 Exit Devices

- cULus listed (3-hour Fire Exit Hardware)
- Weather resistant for outdoor use
- Current of less than 800mA for 12VDC and 400mA for 24VDC is required to unlock the device or to dog it unlocked. (Fire rated devices must be powered through contact of a fire-alarm system delay)
- All devices re-latch
- Camlock and cylinder dogging available (for non-fire labeled doors)
- Choice of 3 standard alarm modules
- Standard lengths for 36" (3 feet) and 48" (4 feet) doors
- Can be field cut for undersized doors
- Non-handed for installing on all types of doors, including narrow stile aluminum.
- High security, exceeding a 1" dead bolt
- Model 1300 includes a 12/24VDC dual voltage continuous-duty solenoid which provides a remote unlock feature for controlled entry.

120 Switch Bar

- SPDT or two SPDT signal switches deactivate electric locks and/or activate a remote alarm when push bar is pressed.

Lever and Pull Trim

- Compatible with 1200/1300 Series exit devices

Model 08 Lever Trim

- Handing standard LHR; field reversible to RHR
- Vandal-resistant - Lever is not restricted in the locked position
- UL certified for fire doors

High Security Exit Devices

The 1200 and 1300 Series exit devices resolve the conflict between life safety and security.

Both 1200 Mechanical and 1300 Electric Series exit devices feature a patented latch that rotates to engage and grip the specially designed strike. This unique interlocking grip action secures the door to the jamb without conventional roller strikes or retracting latches.

In addition an interlocking mechanism located in the chassis offers a double interlocking system which makes these exit devices virtually impossible to tamper with, pry or force open.

The attractive lever trim can be used on the exterior side of the door for access.

Highlights

- Strong Protection, Fast Release
- Non-handed
- Interlocking strike & latch design (1200/1300 Series)
- 3-Year Limited Warranty
- Made in the USA

Applications

- Use 120, 1200 or 1300 Series with any 3 or 4-foot-wide doors
- Use with all types of doors, including narrow-stile aluminum
- Any exterior door exposed to possible tampering

Options & Accessories

120/1200/1300 Series

1200C/1300C	Cylinder dogging
1200D/1300D	Cam lock dogging
1200F/1300F	Fire labeled exit device, no dogging
10	Alarm module (9V battery supplied)
20	10-26 VDC alarm module (remote power with battery backup; 9V battery supplied)
30	10-26 VDC alarm module (remote power only)
SS1	SPDT Signal Switches
SS2	Two SPDT Signal Switches
LMS	Lock Monitor Switch
DDS	Double Door Strike

Trim Options

08-L	Lever Trim
08N-L	Narrow stile lever trim
08E-L	Electrified lever trim
08NE-L	Narrow stile electrified lever trim
03-P	Pull Trim

Finishes

28	Aluminum (BHMA 628)
40	Dark Duranodic (BHMA 710)

Specifications

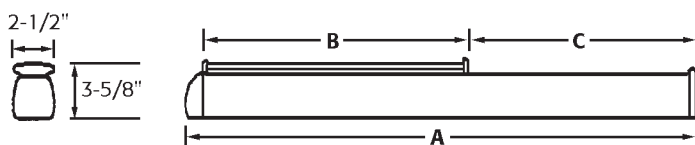
120/1200/1300 Series

03P/08 Trim

1200/1300 Series	
Signal Switches*	Activated by depressing push bar. Switches can be specified for all types of access controls. SS1 – SPDT rated 3A@30VDC (Inductive), 4A @ 30VDC (Resistive) SS2 – 2SPDT rated 3A @ 30VDC (Inductive), 4A @ 30VDC (Resistive)
Lock Monitor Switch	For remote alarm monitoring of latch position. Normally opened, normally closed contacts.
Push Bar Inserts	Black vinyl insert supplied. Allows inserts to be added by removing push bar end cap and sliding insert into the groove of the push bar.
Patented Interlock	Strike and latch are stainless steel, heat-treated and tempered. Tensile strength 200,000 PSI.
Alarm Module	10 – Operated by a 9V alkaline battery (supplied) 20 – Remotely powered field-selectable 10 to 26VDC power with a 9V battery backup (supplied) 30 – Remotely powered field-selectable 10 to 26VDC power. 1300 Series can be unlatched remotely without sounding the alarm. When cylinder supplied by others, specify 15/16" through 1-1/8" with Yale A Cam (Cylinders sold separately). Signal switches SS1 and SS2 are available with all alarm modules.
Alarm Module Current Draw	Alarm Module 10 – 0.5 microA in Standby position; 16mA when sounding Alarm Module 20 – 0.5 microA in Standby position; 16mA when sounding Alarm Module 30 – 0.5 microA in Standby position; 16mA when sounding
Alarm Horn Power	110db piezo horn; field-selectable continuous horn or 3 to 5-minute sound and reset; field-selectable intermittent beep or steady horn. Activated by depressing push bar when in the "Alarm On" position.
Low Battery Alert	Audible chirp indicates low battery (1 chirp/minute). Activated by 7.6 volts
Current Draw	Electrified Trim 155mA@24VDC 1300 Solenoid 800mA @ 12VDC, 400mA@24VDC
1200/1300 Series Certification	Accepted by NYC MEA 337-92M, Listed by CA State Fire Marshal; ADA compliant Models with A.C or D suffix; cULus Listed Panic Hardware ANSI/BMHA A156.3-2001, Grade 1, Models with F suffix; cULus Fire Exit Hardware rated 3 hours, ANSI/BMHA A156.3, Grade 1 Conforms to ANSI/UL10C and UBC 7-2 (1997)

*Rating for SS1 and SS2 applies to Model 120 also.

120/1200/1300 Series



MODEL NO.	A	B	C	DOOR WIDTH	FIELD-CUT C FOR DOOR WIDTHS
120A/1200A/1300A	34-3/8"	18"	15"	36"	22" to 35"
120D/1200C & D/1300C & D	34-5/8"	18"	15"	36"	24" to 35"
1200F/1300F	34-3/8"	18"	15"	36"	27" to 35"
L120A/L1200A/L1300A	46-3/8"	24"	21"	48"	28" to 47"
L120D/L1200C & D/L1300C & D	46-3/8"	24"	21"	48"	30" to 47"
L1200F/L1300F	46-3/8"	24"	21"	48"	39" to 47"



08 Series Lever Trim

UL Certified to ANSI/BHMA
 156.3, Grade 1
 ADA Compliant

NOTE: Not to scale. Specifications are subject to change without notice.

EntraPASS also offers a complete line of Electromagnetic Locks, Electric Strikes, Power Supplies, Switches, Keypads & Readers, Exit Devices, Systems & Door Hardware.

EntraPASS Workstation

EntraPASS Global Edition Workstation

Loaded on a powerful All-in-One computer, the Global Edition Workstation supplements your ePASS GES Server to enhance the functionality of your access control system.

It is pre-configured for a variety of security levels so other users can view and manage alarms, time zones, access control points or reports.

How it Works

The system setup requires a main server (ePASS GES) containing the main database. This is usually housed in a secure location such as a security office.

Peripheral workstations (ePASS GES WS) are set up in various locations on and off site. The workstation contains the same database, and relays real-time information between all the ePASS computers on the network. These are used at entry points when visual identification is necessary.

Workstations may also be used as enrollment stations in which new or temporary users are entered into the system.

A site/loop is composed of controllers attached to the same communication port or connection. The software is scalable and grows with the customer's needs. EntraPass Global Edition can manage up to 32 local sites or 512 Secure IP connections per Multi-Site Gateway. Each KT-NCC supports 3 local loops (32 controllers each) and 4 remote loops (8 controllers each). The KT-NCC provides advanced cross controller communication giving customers higher flexibility and functionality.

Software Features

- Supports up to 128 workstations and controls hundreds of thousands of doors
- Embedded Sybase SQL database engine
- Global virtual alarm system, anti-passback, guard tours and muster reporting
- USB delivery. Includes one server workstation and four additional workstation licenses, one gateway license and one WebStation license. One year of updates is included.
- Integrates EntraPass Web (remote user platform) to manage access control, IP video, telephone entry and/or intrusion security assets



- Supports up to 200 concurrent logins of EntraPass Web and/or EntraPass Go
- Integrates with Exacq video management systems, American Dynamics DVRs/NVRs (VideoEdge, HDVR, ADTVR and Intellex) and DSC PowerSeries and MAXSYS intrusion alarm panels
- Double and triple swipe card at reader (with KT-400 controller) to activate such features as: activate relay, arm alarm system and lock/unlock doors

Hardware Features*

- 23" Full HD Anti-Glare LED-backlit Touch Display
- Intel Core i5-4460S Processor 2.9GHz
- Microsoft Windows 8.1 64-bit
- 8GB DDR3-1600 RAM
- 1TB 5,400RPM Hard Drive
- Intel HD Graphics 4600
- Dell Wireless-N 1707+Bluetooth 4.0

* Comparable models may be substituted

• Options*

- EntraPass GO
- EntraPass WEB
- Kantech Advantage Program for updates and extra training
- Video Vault for storing video clips
- Redundancy Server protects the database against unexpected failures

*More integration options and upgrades are available upon request.

