



Sleek and elegant access control

When you need to securely control access to your building, whether residential or commercial, but want to keep the upscale appearance of your entrance, the Magnetic MPW is your ideal choice. The MPW comes in multiple widths, including ADA-compliant passage for wheelchairs, mobility devices and material carts. Photoelectric switches in the housings reliably detect users and open the gates instantly, providing no-contact passage. The barriers close automatically after each person.

The MPW's MHTM™ drive offers high-sensitivity impact detection ensuring maximum personal safety. In addition, the photoelectric switches contribute towards security: they register the passage of persons attempting to tailgate, pass the wrong way, or without authorization and trigger an alarm. The MPW wing gates can be used bi-directionally and can be integrated with most access control systems. The barrier elements are available with acrylic glass or hardened safety glass.



Fast and attractive access control

The short opening times of 0.6 seconds make MPW wing gates suitable for high volume traffic in areas with low to medium security requirements.



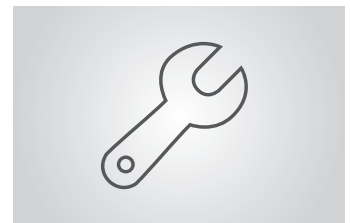
Innovative drive technology

The MHTM™ drive unit is maintenance-free, energy-efficient and quiet. Sensitive impact detection ensures maximum safety.



Reliable processes

Photoelectric switches in the passage reliably detect persons and objects. They facilitate no-contact passage and trigger an alarm in case of improper access attempts.



Easily accessible components

All the control and drive components necessary for operation are accommodated in the lockable central segment – considerably simplifying setup and maintenance.

ACCESS

AFC

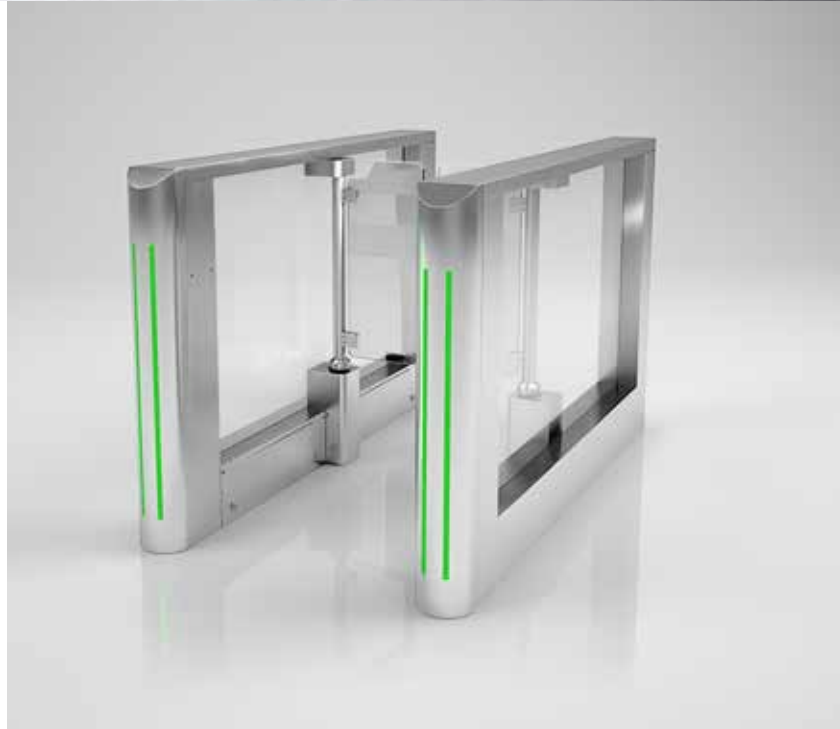
IMMIGRATION

BOARDING

MPW

Wing gate

- › Short opening times of 0.6 seconds for high throughput
- › Sleek design and comfortable no-contact passage
- › Simple integration of most access control systems
- › Automatic opening if power fails
- › Multiple widths suit any need, including wheelchairs and bicycles
- › Designed for 10 million opening and closing actions



Technical data	MPW 112 (Standard)	MPW 112 (Wide Lane)
Passage width	22 in	36 in
Standard glass height (from floor)	37.25 in	37.25 in
Opening/closing time	0.6 s	1.0 s
Drive technology	MHTM™	MHTM™
Voltage	110 – 240 VAC, 50/60 Hz	110 – 240 VAC, 50/60 Hz
Power consumption	Maximum 120 W	Maximum 120 W
Duty cycle	100 %	100 %
Housing dimensions (L x W x H)	68.9 x 5.9 x 41.1 in	68.9 x 5.9 x 41.1 in
Housing material	Stainless steel 304	Stainless steel 304
Enclosure rating	IP 32	IP 32
Weight (per module)	270 lb	270 lb
Temperature range	32 to +113° F	32 to +113° F

Options

Barrier elements

Toughened or laminated safety glass; gate heights of 47.25" standard; Higher panels require custom firmware at add'l cost. Customer- specific glass barrier designs possible with back-lighting, imprints or appliques; custom color acrylic.

Attachments

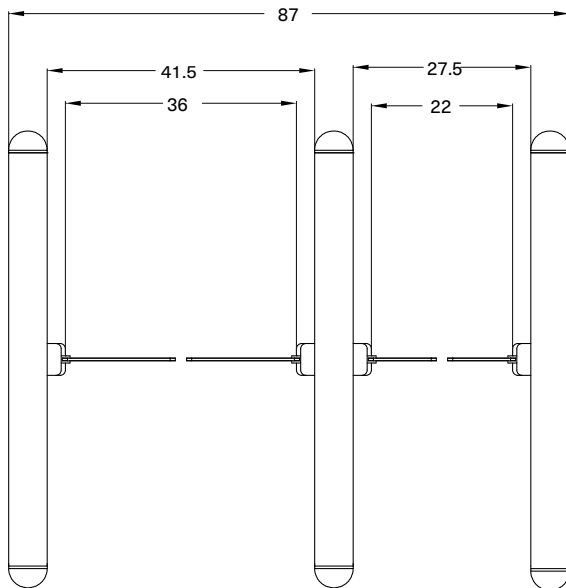
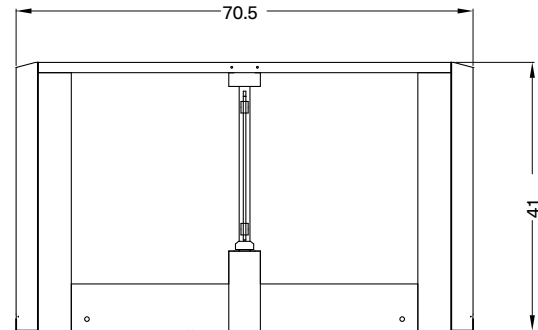
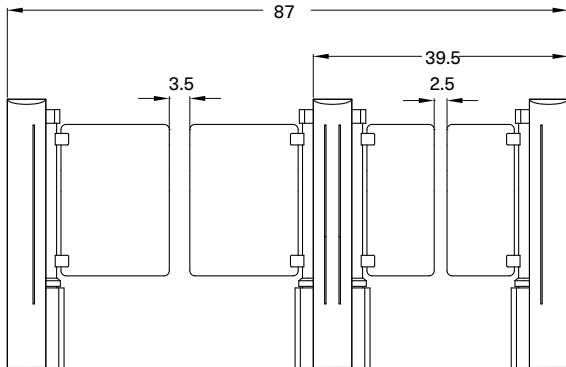
Customer-specific access control systems

Potential applications

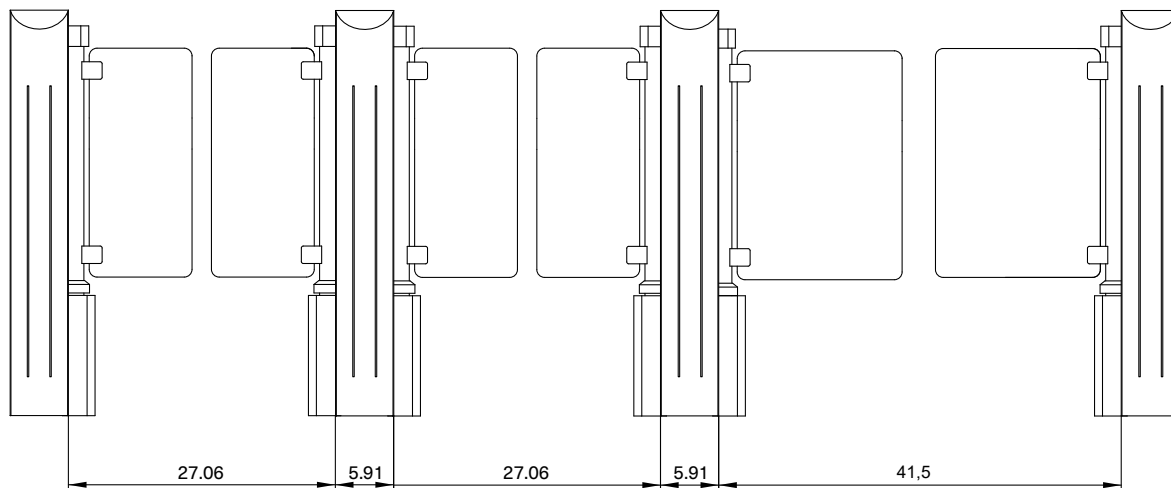


Dimensional drawings

MPW 112 Standard with 22 in passage width
MPW 112 Wide Lane with 36 in passage width



Line configuration with combinable modules



A wide variety of space-saving applications for pedestrians and wheelchair users can easily be implemented using a combination of modules with gates on one or two sides and with narrow or wide passages.