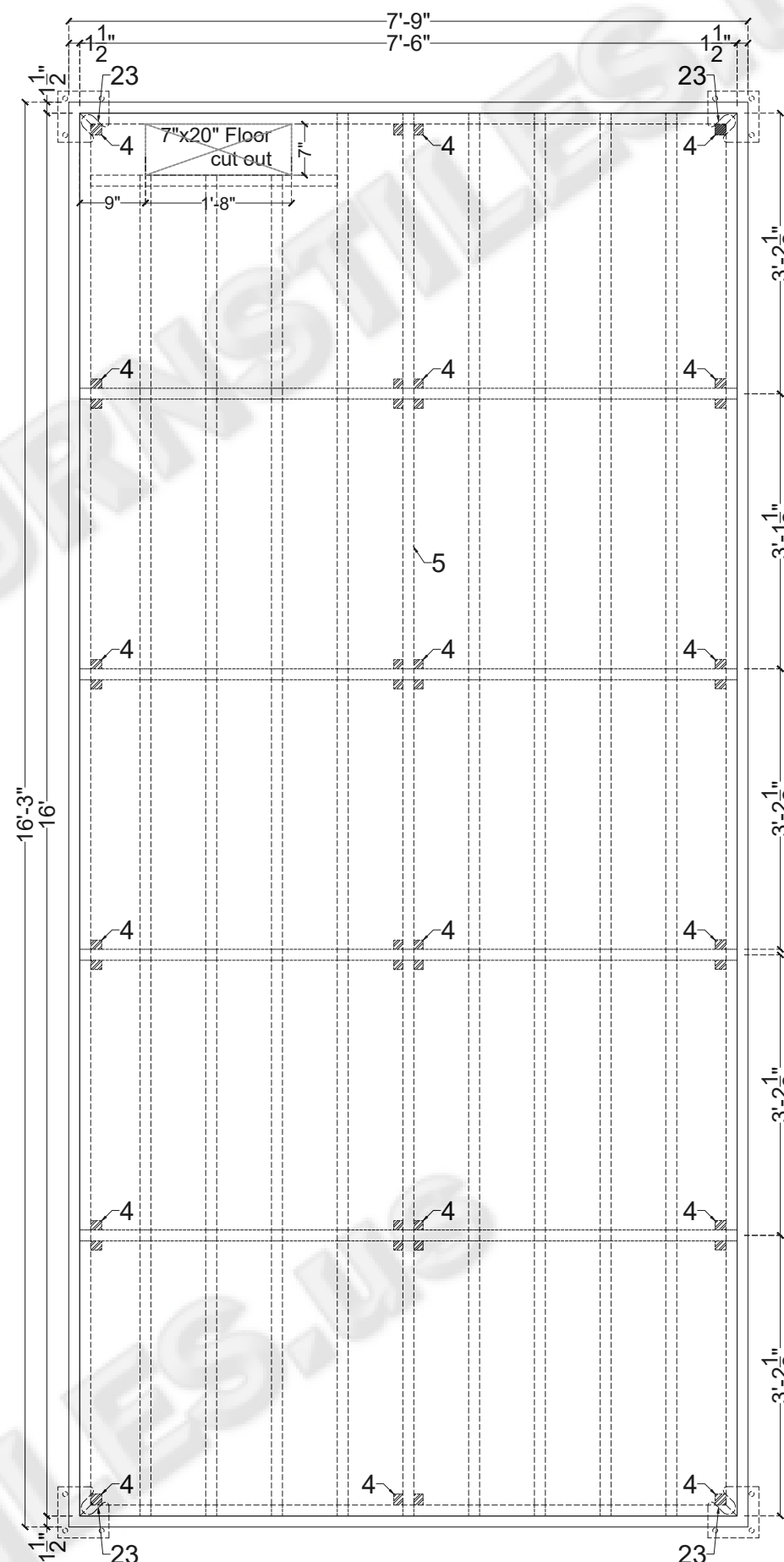
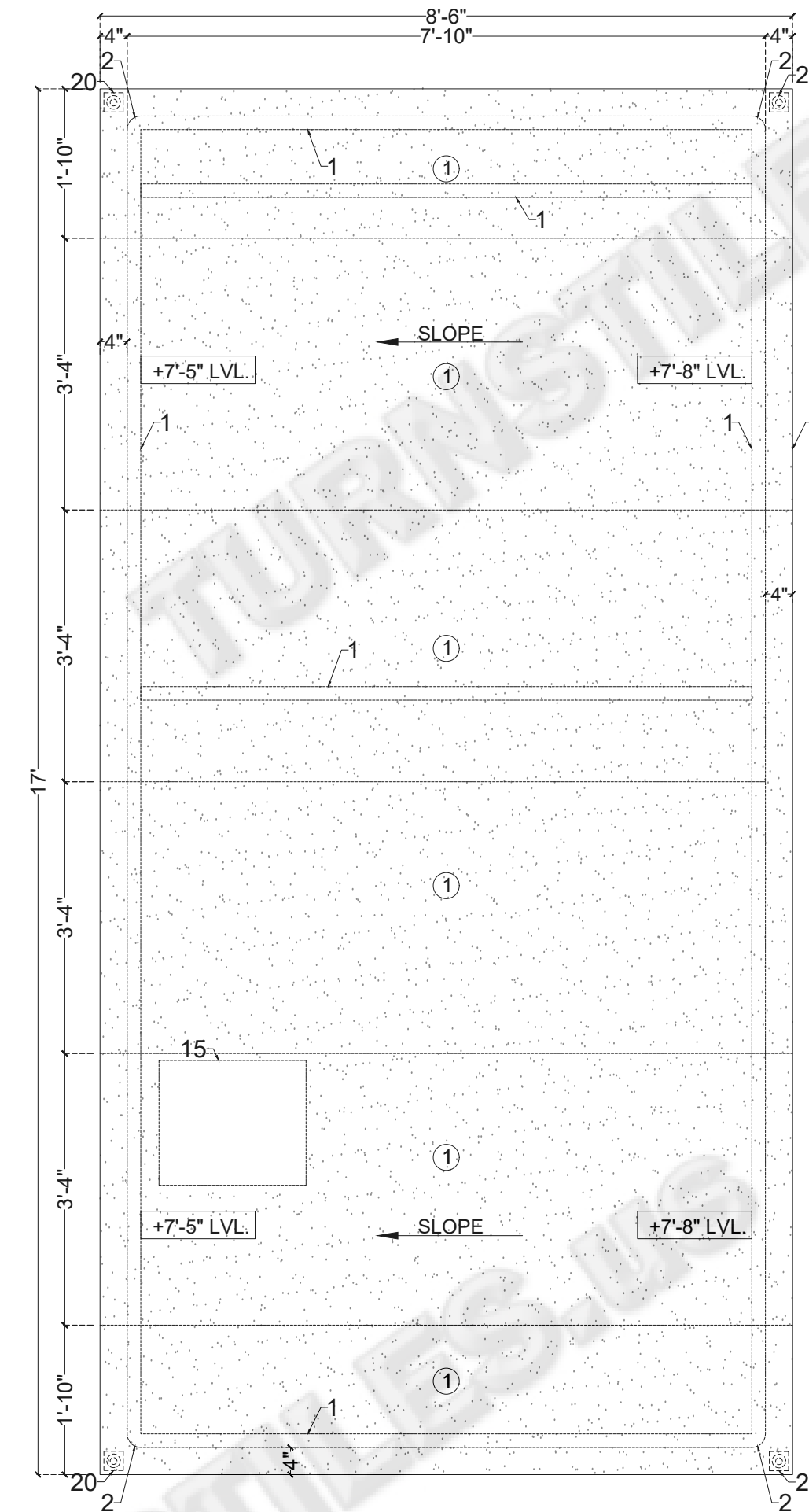


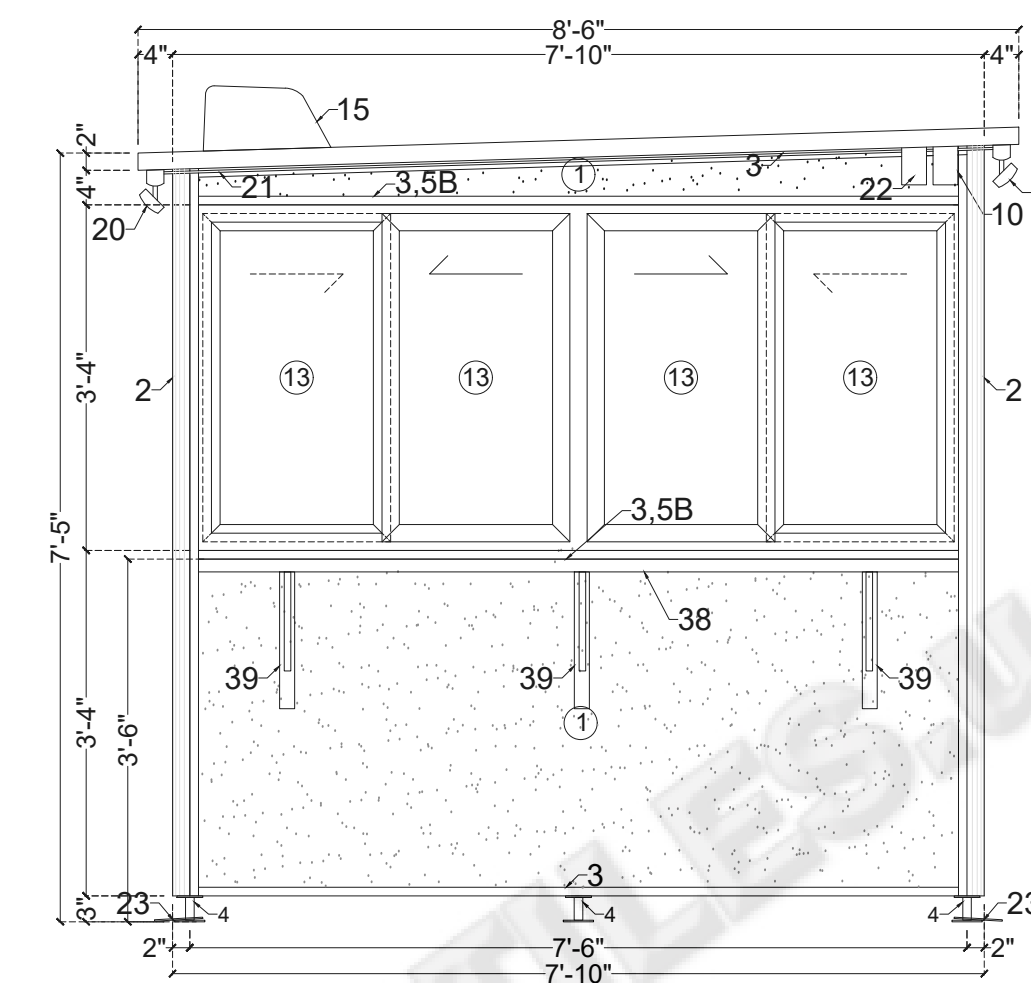
1 FLOOR PLAN
SCALE: 3/16" = 1'



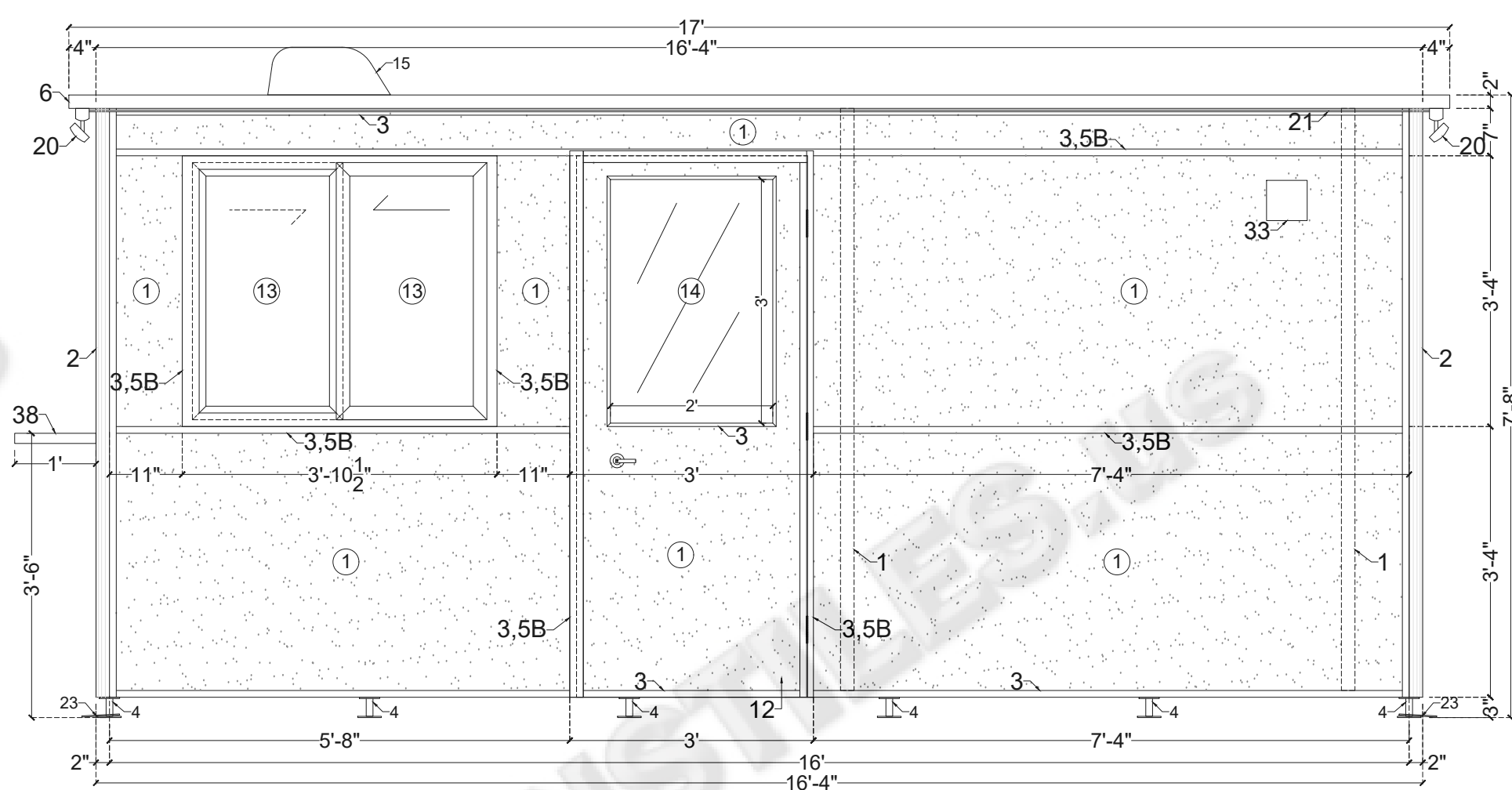
2 FLOOR FRAMING
SCALE: 3/16" = 1'



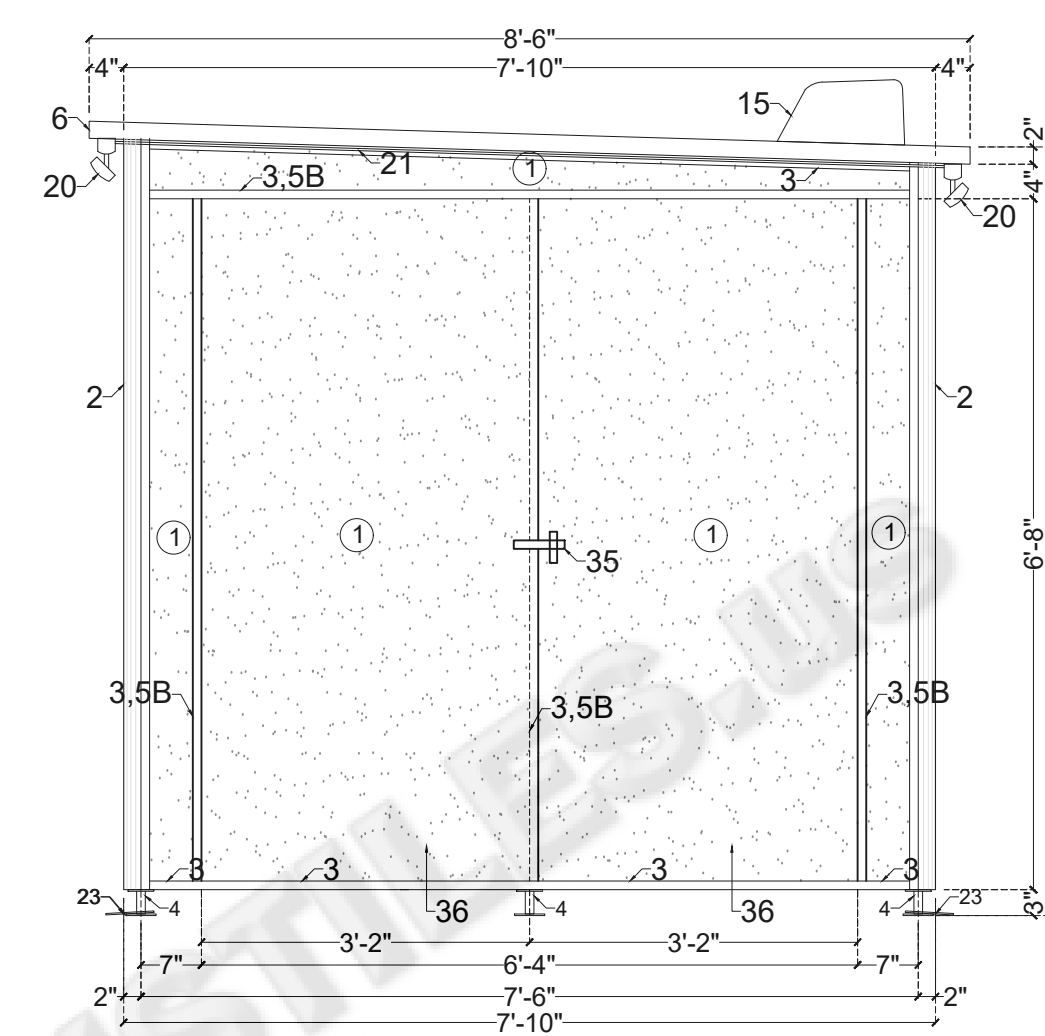
3 ROOF PLAN
SCALE: 3/16" = 1'



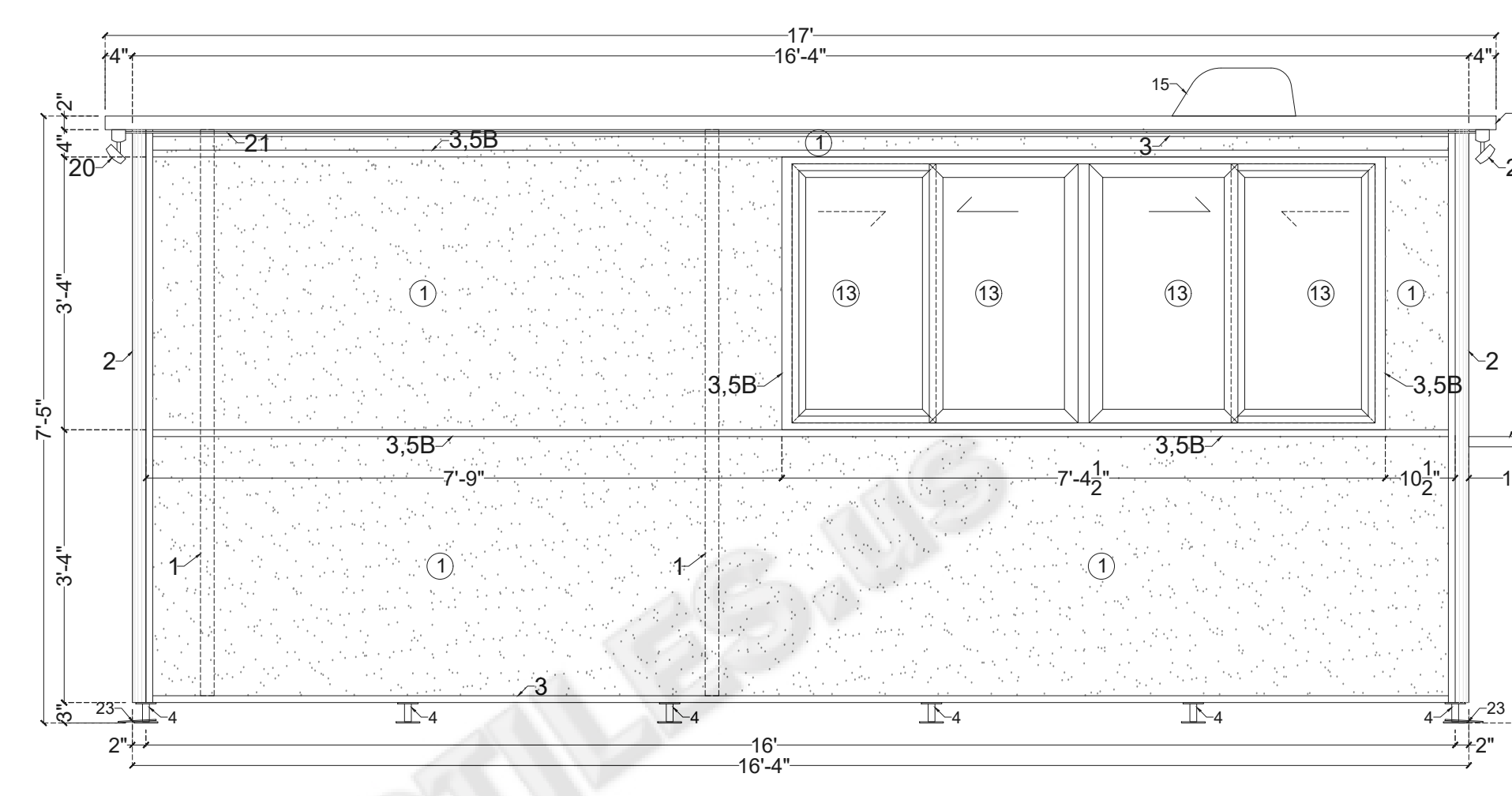
4 LEFT ELEVATION
SCALE: 3/16" = 1'



5 FRONT ELEVATION
SCALE: 3/16" = 1'



6 RIGHT ELEVATION
SCALE: 3/16" = 1'



7 REAR ELEVATION
SCALE: 3/16" = 1'

LEGEND:

1. (1500)(WRAP8X12)_ SANDWICH PANEL-ALUMINUM FRAME WITH 2" DOUBLE LAYER ISOPIANO PANELS AND R-10 XPS FORM INSULATION (WRAPPED)
2. (4100)_ CORNER COLUMN
3. (4001-1)_ C-CHANNEL
4. (9001)_ LEGS
5. (S8X16F)_ BASE-FRAME:WELDED 1.5" X 1.5" X 0.065" SQUARE STEEL TUBING, COVERED WITH 0.12" THK. DIAMOND FLOOR PLATE
- 5B. SUPPORT TUBE 1 1/2" X 1 1/2" X 1/8"
6. (S8X16R)_ PITCH ROOF WITH 4" OVERHANG
7. (3101)_ INTERIOR LIGHTING
8. (2305)_ LIGHT SWITCH
9. (2303)_ QUAD OUTLET
10. (EXTJUNCTIONBOX)_ EXTERIOR ELECTRICAL CONNECTION BOX
11. (DESK5)_ DESK WITH DRAWER (18")
12. (7098)(TINT8X12)_ 32" SWING DOOR WITH FIXED GLASS (15% BLACK TINTED)
- 12B. 32" SWING DOOR WITHOUT GLASS
13. (9403-04, 01)(TINT8X12)_ SLIDING WINDOW (15% BLACK TINTED)
14. (TINT8X12)_ FIXED WINDOW (15% BLACK TINTED)
15. (9108)_ ROOFTOP AC (13500 BTU)
16. (B4X6)_ ELECTRIC BASEBOARD HEATER (4X750 WATT)
17. (2302)_ THERMOSTAT (2X)
18. (3402)_ CIRCUIT BREAKER PANEL RATED 125 AMP, MAIN LUG (8 SPACE CHCP)
19. (11010)_ WALL MOUNTED FLASHLIGHT
20. (EXTLGH2)_ EXTERIOR LIGHTING
21. (2403)_ CONDUIT
22. (11001)_ DATA PORT & PHONE LINE
23. (BRACKETS)_ ANCHORING BRACKET
24. (7009)_ DOOR CLOSER
25. (11009)_ FIRE EXTINGUISHER
26. (11008)_ SMOKE DETECTOR (2X)
27. (11011)_ FIRST AID KIT
28. (9503)_ VANITY SINK
29. (9500)_ TOILET
30. (9504)_ MIRROR
31. (9507)_ WATER HEATER
32. (9509)_ TOILET TISSUE DISPENSER
33. VENT FAN
34. (9509)_ PAPER TOWEL DISPENSER
35. KEYED HASP LOCK
36. CHASE ACCESS DOORS
37. BARREL BOLT LOCK
38. (7012)_ EXTERIOR COUNTER TOP
39. SUPPORT BRACKET FOR EXTERIOR COUNTER

NOTE:

1. DO NOT SCALE THE DRAWING, FOLLOW ONLY FIGURED DIMENSION
2. ALL DIM. GIVEN IN THIS DRAWING ARE IN FEET & INCH
3. EXTERIOR TO BE WRAP WITH VINYL
4. PITCH ROOF

The foundation and anchorage was not included in the analysis. The structure was analyzed assuming it has been properly anchored to a foundation. It is the responsibility of the customer to design the foundation and booth anchorage per their specific site and jurisdictional requirements.

R4
R3
R2
R1

NO.	DATE	DESCRIPTION	DRAWN BY
-----	------	-------------	----------

PROJECT : 11214_8' X 16'_ CUSTOM BOOTH

CLIENT : www.TURNSTILES.us

DRAWING TITLE : APPROVED :

FLOOR PLAN, FLOOR FRAMING, ROOF PLAN & SIDE ELEVATIONS

WORKING DRAWING

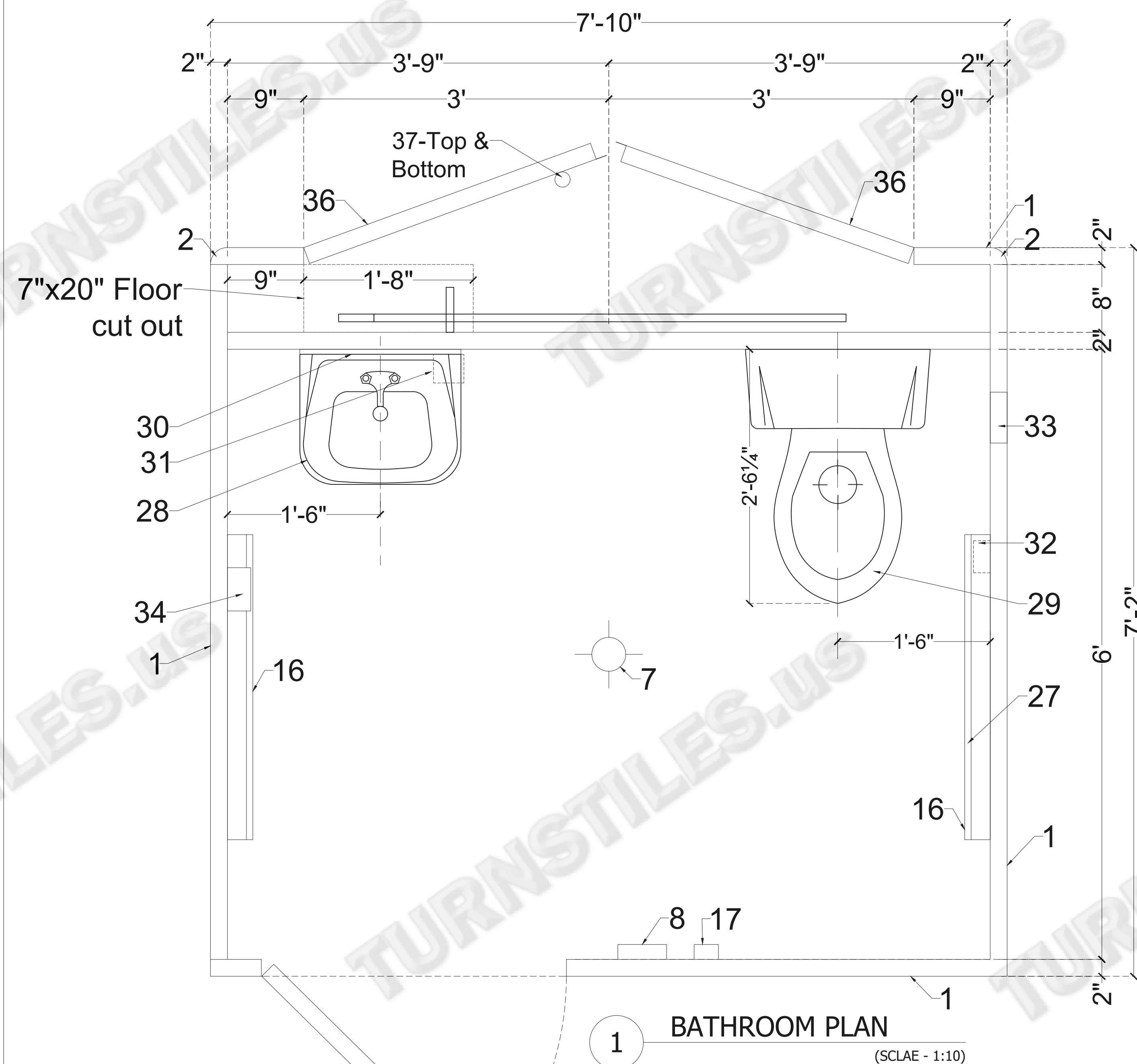
DRG. NO. : DRAWN BY : DESIGN BY :

1 OF 4

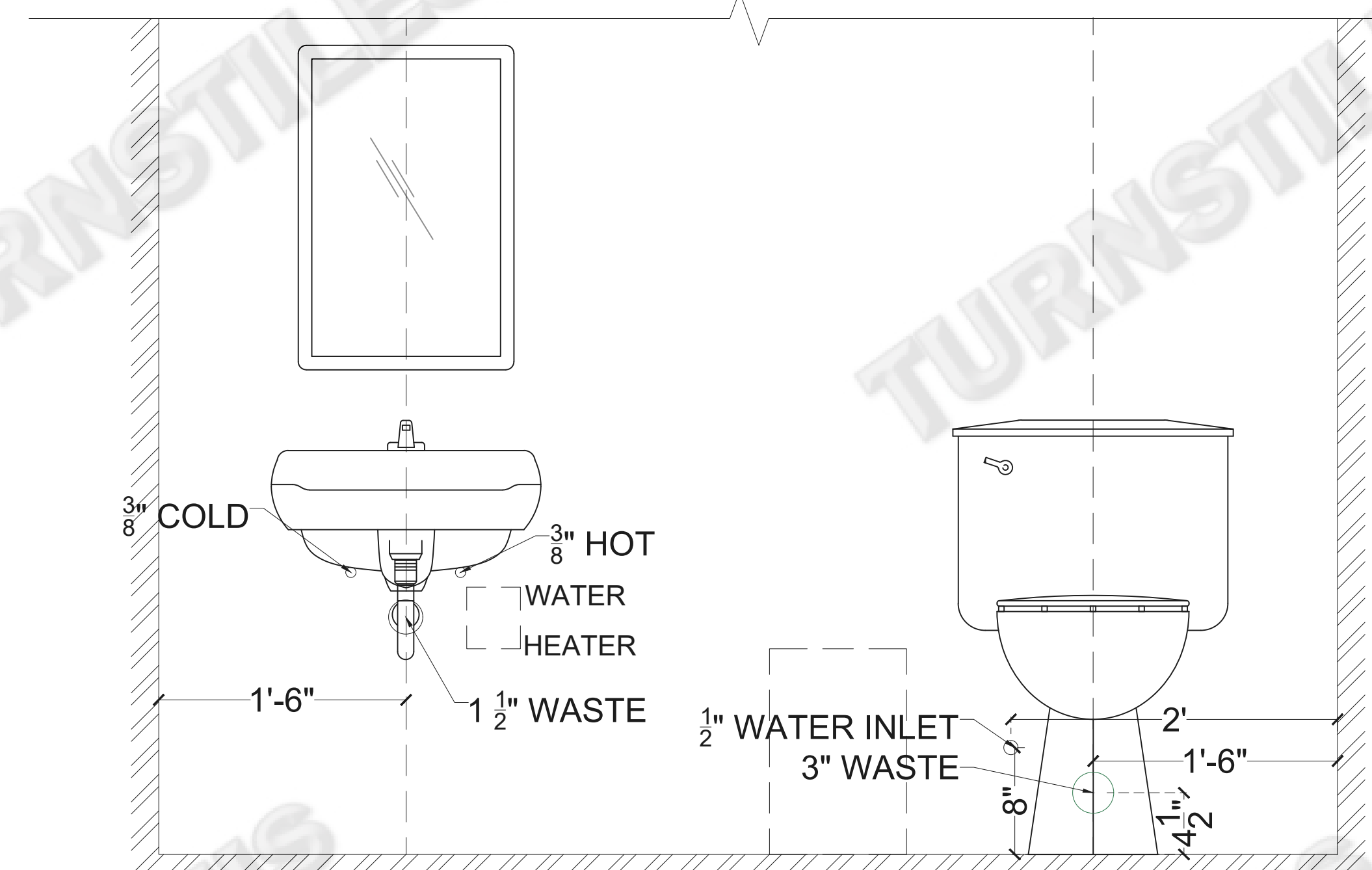
DATE : 03/03/2023 SCALE : 3/16" = 1' PROJECT NO. : #11214

R0

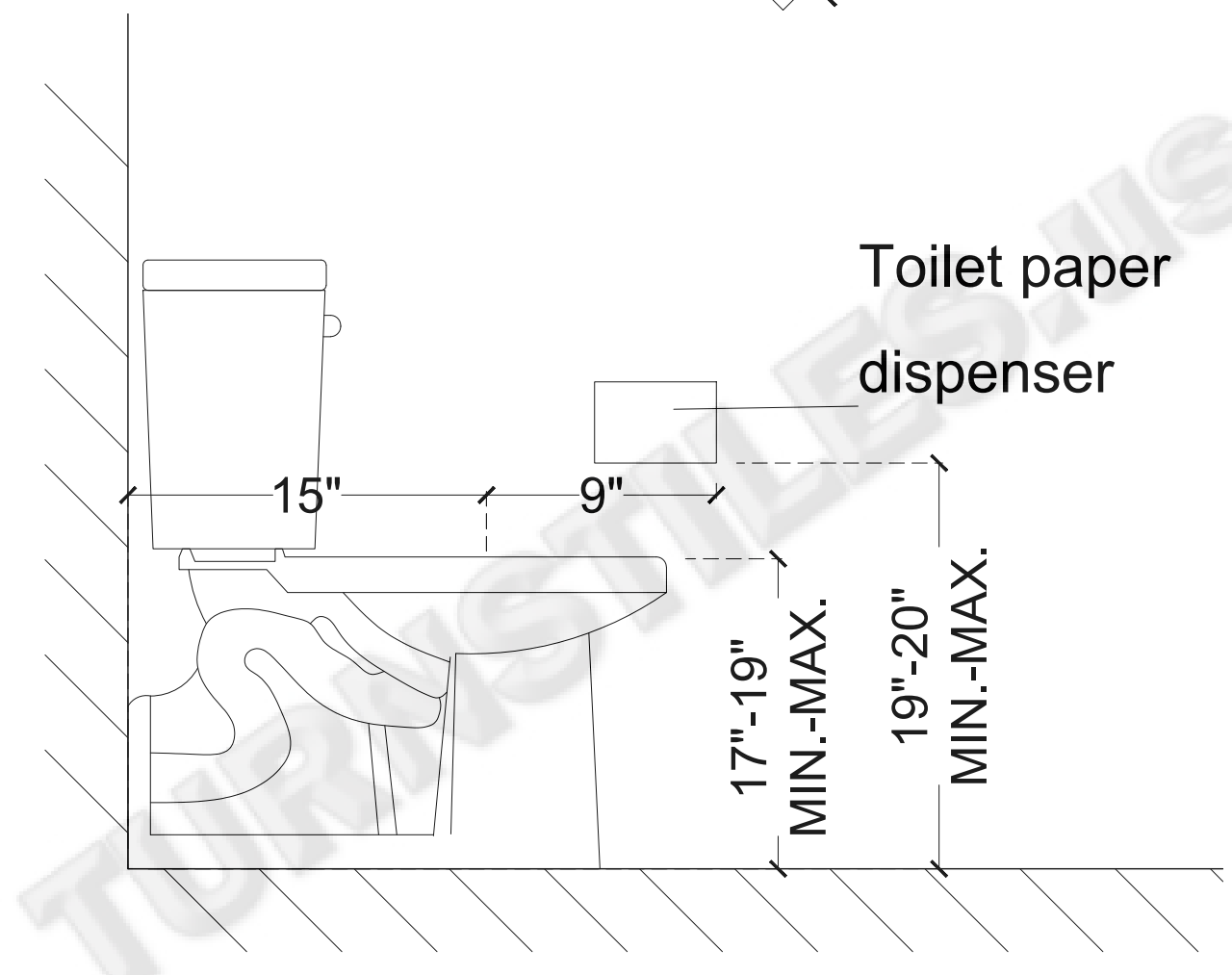
8' X 16' CUSTOM BOOTH



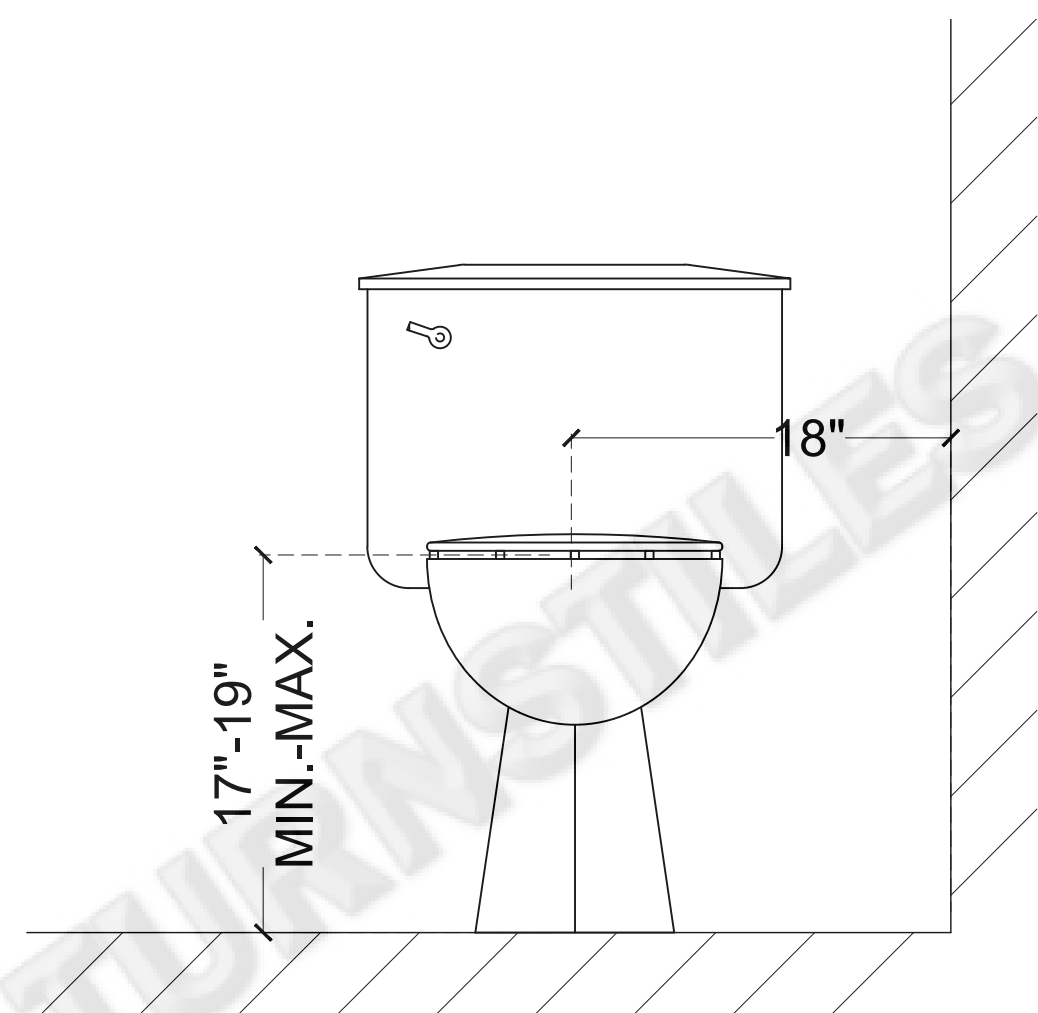
1 BATHROOM PLAN
(SCLAE - 1:10)



2 TOILET - PLUMBING
(SCLAE - 1:10)



3 TOILET - SIDE WALL
(SCLAE - 1:10)



4 TOILET - BACK WALL
(SCLAE - 1:10)

8' X 16' CUSTOM BOOTH

LEGEND:

1. (1500)(WRAP8X12)_ SANDWICH PANEL-ALUMINUM FRAME WITH 2" DOUBLE LAYER ISOPIANO PANELS AND R-10 XPS FORM INSULATION (WRAPPED)
2. (4100)_ CORNER COLUMN
3. (4001-1)_ C-CHANNEL
4. (9001)_ LEGS
5. (S8X16F)_ BASE-FRAME:WELDED 1.5" X 1.5" X 0.065" SQUARE STEEL TUBING, COVERED WITH 0.12" THK. DIAMOND FLOOR PLATE
- 5B. SUPPORT TUBE 1 1/2" X 1 1/2" X 1/8"
6. (S8X16R)_ PITCH ROOF WITH 4" OVERHANG
7. (3101)_ INTERIOR LIGHTING
8. (2305)_ LIGHT SWITCH
9. (2303)_ QUAD OUTLET
10. (EXTJUNCTIONBOX)_ EXTERIOR ELECTRICAL CONNECTION BOX
11. (DESK5)_ DESK WITH DRAWER (18")
12. (7098)(TINT8X12)_ 32" SWING DOOR WITH FIXED GLASS (15% BLACK TINTED)
- 12B. 32" SWING DOOR WITHOUT GLASS
13. (9403-04, 01)(TINT8X12)_ SLIDING WINDOW (15% BLACK TINTED)
14. (TINT8X12)_ FIXED WINDOW (15% BLACK TINTED)
15. (9108)_ ROOFTOP AC (13500 BTU)
16. (BH4X6)_ ELECTRIC BASEBOARD HEATER (4x750 WATT)
17. (2302)_ THERMOSTAT (2X)
18. (3402)_ CIRCUIT BREAKER PANEL RATED 125 AMP, MAIN LUG (8 SPACE CHCP)
19. (11010)_ WALL MOUNTED FLASHLIGHT
20. (EXTLGHNT)_ EXTERIOR LIGHTING
21. (2403)_ CONDUIT
22. (11001)_ DATA PORT & PHONE LINE
23. (BRACKETS)_ ANCHORING BRACKET
24. (7009)_ DOOR CLOSER
25. (11009)_ FIRE EXTINGUISHER
26. (11008)_ SMOKE DETECTOR (2X)
27. (11011)_ FIRST AID KIT
28. (9503)_ VANITY SINK
29. (9500)_ TOILET
30. (9504)_ MIRROR
31. (9507)_ WATER HEATER
32. (9509)_ TOILET TISSUE DISPENSER
33. VENT FAN
34. (9509)_ PAPER TOWEL DISPENSER
35. KEYED HASP LOCK
36. CHASE ACCESS DOORS
37. BARREL BOLT LOCK
38. (7012)_ EXTERIOR COUNTER TOP
39. SUPPORT BRACKET FOR EXTERIOR COUNTER

NOTE:

1. DO NOT SCALE THE DRAWING, FOLLOW ONLY FIGURED DIMENSION
2. ALL DIM. GIVEN IN THIS DRAWING ARE IN FEET & INCH
3. EXTERIOR TO BE WRAP WITH VINYL
4. PITCH ROOF

The foundation and anchorage was not included in the analysis. The structure was analyzed assuming it has been properly anchored to a foundation. It is the responsibility of the customer to design the foundation and booth anchorage per their specific site and jurisdictional requirements.

ITEM NAME	STANDARD HEIGHT (MIN.- MAX.)
M WALL HUNG SINK (ADA)	30" - 32" AFF
O TOILET BACKFLUSH (ADA)	17" - 19" AFF
O MIRROR	38" - 40" AFF
O WATER HEATER	18" - 22" AFF
O TOILET TISSUE DISPENSER	18" - 20" AFF
O VENT FAN	65" - 70" AFF (6"X6" SQUARE CUTOUT)
R PAPER TOWEL DISPENSER	40" - 48" AFF
R NAPKIN DISPOSAL *	PLACED ON FLOOR *
H SOAP DISPENSER	32"-36" AFF
S BARREL BOLT LOCK	ON BOTTOM ON CHASE DOOR
S GRAB BAR 36" ON BACK WALL *	34" AFF *
S GRAB BAR 18" VERTICAL ON SIDE WALL *	40" AFF *
A GRAB BAR 42" ON SIDE WALL *	34" AFF *
W CHASE ACCESS DOORS (WITH HINGES)	80" X 80" DOUBLE SWING (80" X 40")
W KEYED HASP LOCK	KEYED HASP LOCK
W WHEELCHAIR CLEAR SPACE	67" DIA. CLEAR SPACE & 60"WIDTH X 50"DEPTH

R4
R3
R2
R1

NO.	DATE	DESCRIPTION	DRAWN BY
PROJECT :	11214_8' X16'_CUSTOM BOOTH		
CLIENT :	www.TURNSTILES.us		
DRAWING TITLE :	WASHROOM DETAIL	APPROVED :	
WORKING DRAWING			
DRG.NO. :	DRAWN BY :	DESIGN BY :	
4 OF 4			
DATE :	SCALE :	PROJECT NO. :	
03/03/2023	1/2" = 1'	#11214	

R0