

HS Stair Access 1stFloor

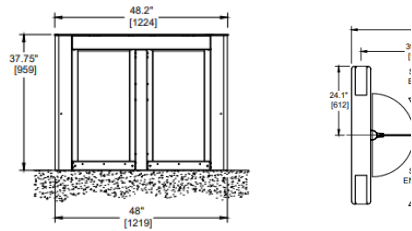


Gunnebo OptiStile 1080

Modular Turnstile with Swinging Glass Barrier

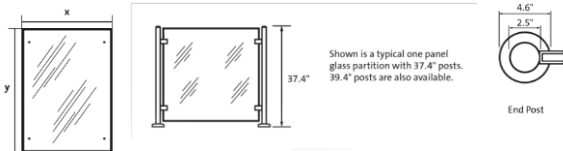
Standard Dimensions	Casework Length	48.0"	Walkway Width	28.0" std / 36.0" (ada)
	Casework Height	37.8"	Casework Width	8.8" end unit / 11.2" center unit
	Glass Barrier Height	33.8" / 47.2" / 59.1" / 70.9"		

Function: Passage in both directions is electronically controlled. Default mode is Normally Closed (NC), and lane will open only upon acceptance of an authorized signal.



Custom Glass Partitions

Filler Glass Barrier System
Gunnebo's barrier partition posts are produced from either polished or grained stainless steel tube and paired with tempered glass to form an effective and attractive way to direct traffic and secure any gaps in the entrance installation. Suitable to complement any of Gunnebo's wide range of turnstile products, the filler glass barrier system is another accessory offered to complement the leading entrance control products in the industry.

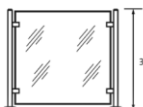


Barrier glass size will vary per site requirements.



Turn Stile

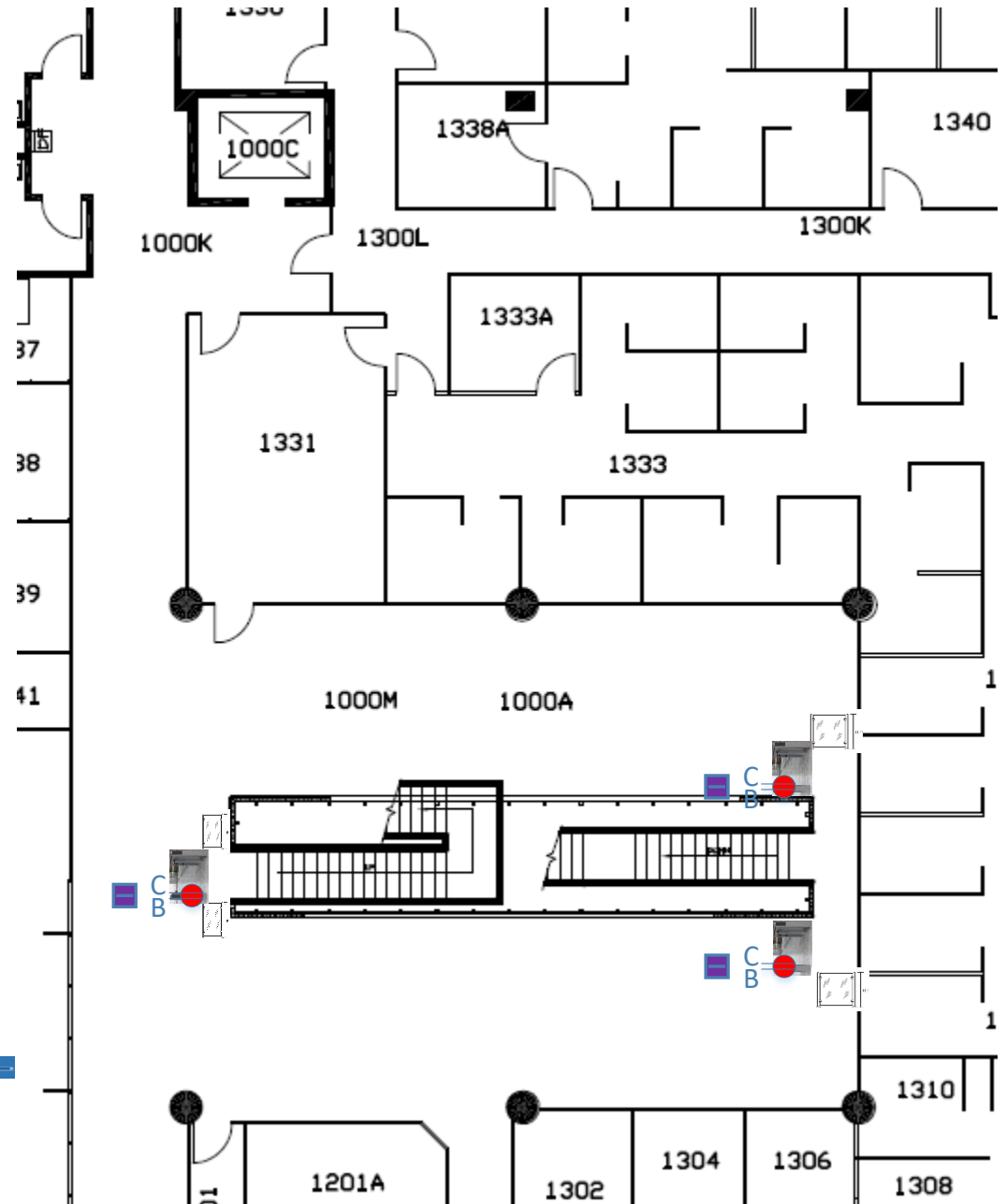
120VAC



Shown is a typical one panel glass partition with 37.4" posts. 39.4" posts are also available.

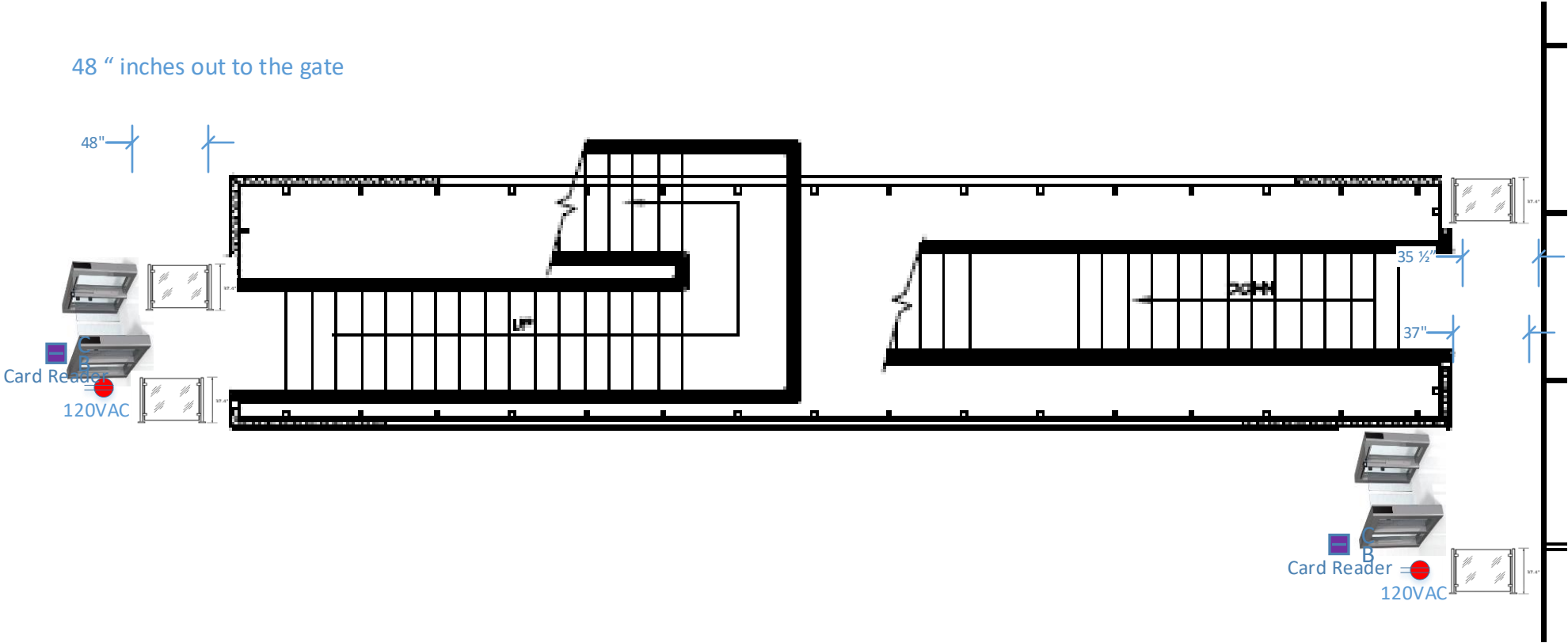
Glass Partition

Card Reader



HS 1st Floor Turnstiles

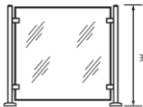
48 " inches out to the gate



Turn Stile



120VAC



37.4"

Shown is a typical one panel glass partition with 37.4" posts. 39.4" posts are also available.

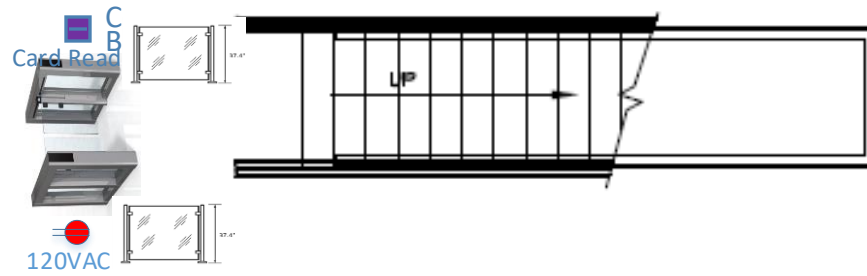
Glass Partition



Card Reader



B200



48 " inches out to the gate

BLOOM