





SCHEDULED FINISHES						
	DESCRIPTION	MANUFACTURE R	PRODUCT NAME / NUMBER	COLOR/ FINISH	SIZE	COMMENTS
WALL						
EP1	EPOXY FLOORING	SHERWIN WILLIAMS	ARMOSEAL	ARCHITECT TO PICK FROM FULL RANGE OF COLOR	N/A	
P1	GENERAL PAINT	SHERWIN WILLIAMS	ARCHITECT TO PICK FROM FULL RANGE OF COLOR	EGGSHELL	N/A	
WD1	WOOD WALL PANELS	MILLWORK	PLYWOOD - GRADE A	CLEAR	4' X 8'	
BASE						
EP1	EPOXY FLOORING	SHERWIN WILLIAMS	ARMOSEAL	ARCHITECT TO PICK FROM FULL RANGE OF COLOR	N/A	
RB1	RUBBER BASE	ROPPE	COVE BASE	ARCHITECT TO PICK FROM FULL RANGE OF COLOR	4"	
RF1	RUBBER FLOORING	PROTECT ALL	INTEGRAL COVE BASE	ARCHITECT TO PICK FROM FULL RANGE OF COLOR	6"	PROVIDE METAL OR SOLID SURFACE CAP AT CONCRETE CURB LOCATIONS
FLOOR						
EP2	EPOXY	SHERWIN WILLIAMS	ARMOSEAL	ARCHITECT TO PICK FROM FULL RANGE OF COLOR	N/A	
RF1	RUBBER FLOORING	PROTECT ALL	INTEGRAL COVE BASE	ARCHITECT TO PICK FROM FULL RANGE OF COLOR	6"	
SC1	SEALED CONCRETE	MANUFACTURER	PRODUCT NAME / NUMBER	COLOR/ FINISH	N/A	
MILLWORK						
PL1	PLASTIC LAMINATE	WILSONART	PLASTIC LAMINATE	MATTE	N/A	MARINE GRADE PLYWOOD SUBSTRATE AT CONTROL CENTER LOCATION
SS	STAINLESS STEEL	MANUFACTURER	PRODUCT NAME / NUMBER	COLOR/ FINISH	N/A	MAINTENANCE ROOM
SU1	SOLID SURFACE	CORIAN	SOLID SUFRACE	ARCHITECT TO PICK FROM FULL RANGE OF COLOR	3/4" THICKNESS	
WD2	WOOD WORKBENCH	MILLWORK	HARDROCK MAPLE	CLEAR	N/A	4 X 4 LEGS WITH 2 X 6 FRAMES WITH 1" PLYWOOD TOP

FLOOR PLAN LEGEND	
	EXISTING BASE PLATE EMBEDS ON MAT SLAB FOR FUTURE FREE FORM INSTALLATION
	RUN CONDUITS WITHIN TOPPING SLAB FROM JUNCTION BOX TO STUB UP LOCATIONS SHOWN
	EXISTING FLOOR DRAIN LOCATIONS. SEE PLUMBING DRAWINGS
	STOPING POINT GRID
DASHED RED LINES INDICATE TRAM MECHANICAL & ELECTRICAL EQUIPMENT. REFER TO TRAM CONSULTANT DRAWINGS	
DIMS. SHOWN IN BLUE ARE FOR REFERENCE ONLY. REFER TO TRAM CONSULTANT DRAWINGS	

WALL TYPES LEGEND

3 5/8" STUD (1 5/8" FLANGE, L/360, Spsf)		
33 mils	15'-4" High (Max.)	
43 mils	16'-8" High (Max.)	
54 mils	17'-10" High (Max.)	
6" STUD (1 5/8" FLANGE, L/360, Spsf)		
33 mils	22'-8" High (Max.)	
43 mils	24'-9" High (Max.)	
54 mils	26'-6" High (Max.)	

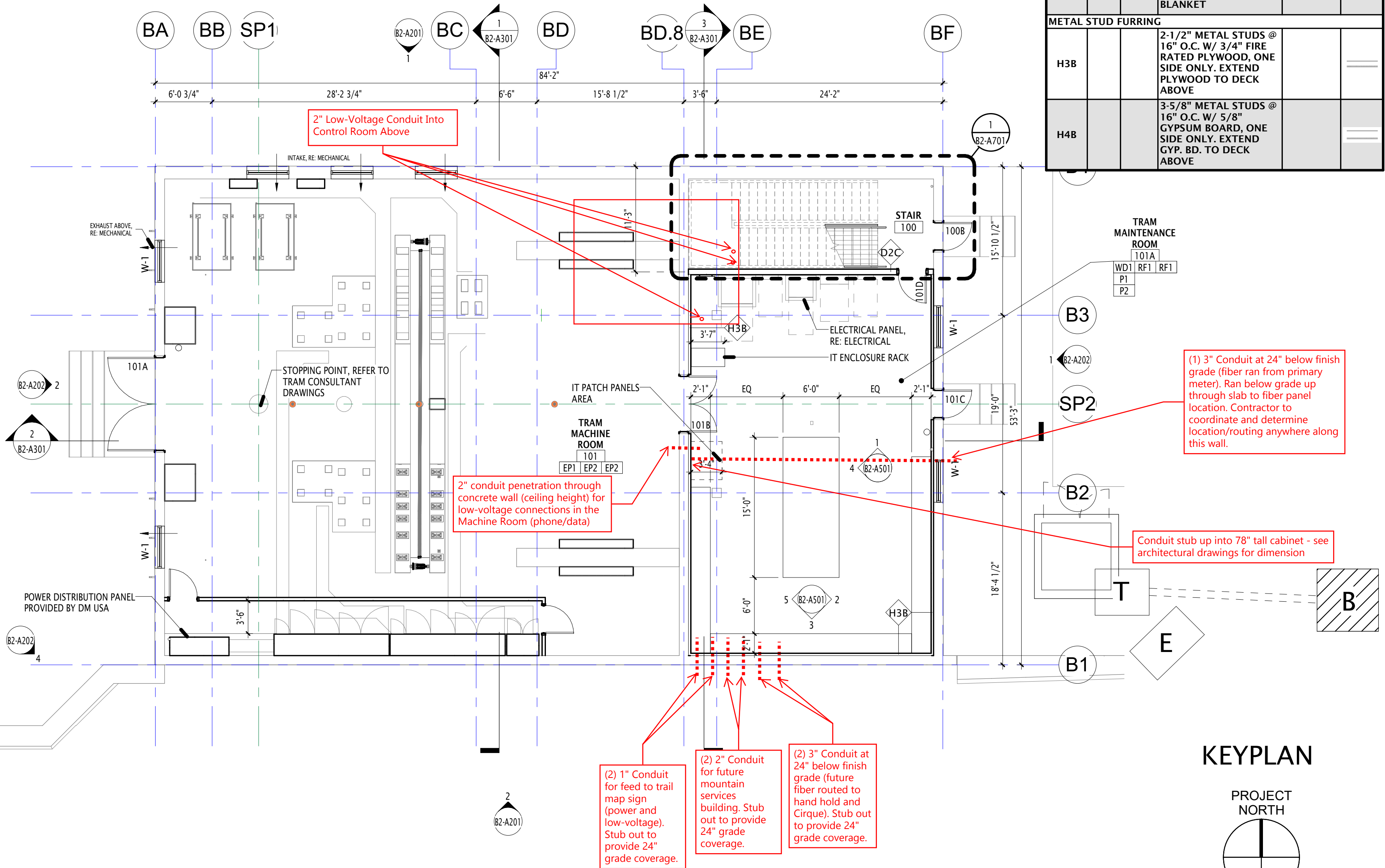
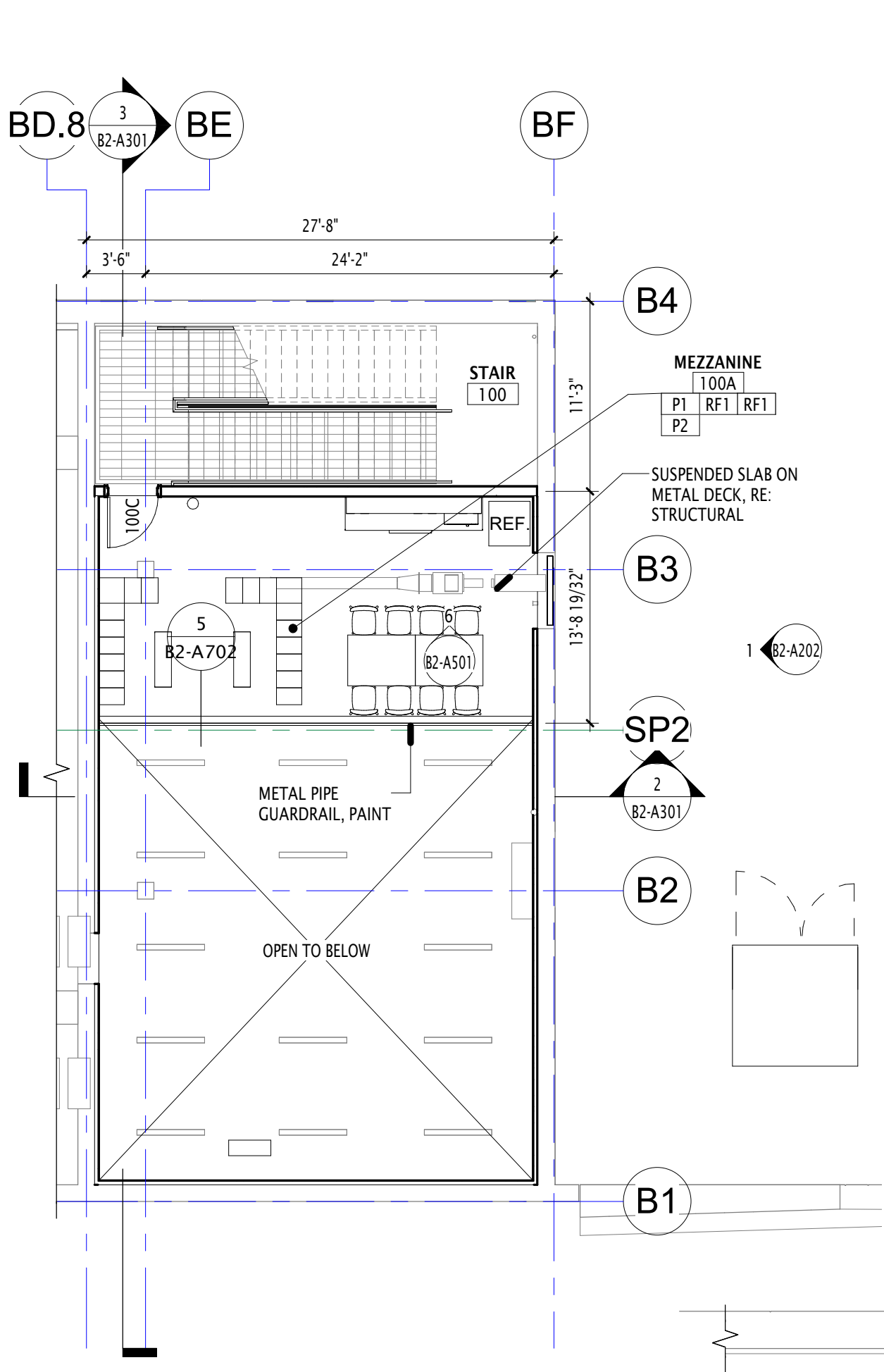
NOTE:
LISTED SIZES ARE MINIMUM
REQUIREMENTS BASED ON CEMCO
METAL STUDS FRAMING.

CONTRACTOR SHALL PROVIDE
MANUFACTURER'S PUBLISHED
LIMITING HEIGHT TABLES TO
DEMONSTRATE COMPLIANCE
WITH MINIMUM STUD
SIZE REQUIREMENTS.

WALL TYPES NOTES

1. ALL WALL DIMENSIONS SHOWN ON DRAWINGS ARE TO CENTER OF STUD UNLESS NOTED OTHERWISE.
2. WALL TYPE TO CONTINUE AT DOOR & WINDOW OPENINGS (TOP & BOTTOM) U.N.O.
3. FOR ANY WALL MISSING A WALL TYPE DESIGNATION, PROVIDE WALL TYPE *D1.C*.
4. WHERE METAL STUD FURRING OCCURS ADJACENT TO A CMU WALL, A COMPLETE SEPARATION BETWEEN WALLS IS REQUIRED. DO NOT ATTACH STUD WALL, FINISH SIDE ELECTRICAL BOXES, CONDUIT, ETC. TO WALL.
5. WHERE FREESTANDING METAL STUD FURRING OCCURS, PROVIDE HORIZONTAL METAL STRAPPING @ 4'-0" O.C. (VERTICALLY)
6. THE INTENT OF ACOUSTICAL PARTITIONS IS TO ACHIEVE AS HIGH AN STC RATING AS POSSIBLE WITHOUT USING ACOUSTICAL SEALANT. RUN GYPSUM BOARD AS TIGHT AS POSSIBLE AT FLOORS, CEILINGS & PENETRATIONS
7. U.N.O. USE WATER RESISTANT GYPSUM BOARD "GREEN BOARD" AT ALL WET WALL LOCATIONS, TYP. INCLUDING BUT NOT LIMITED TO BATHROOM WALLS, WALLS WITH TILE OR STONE FINISH.
8. PROVIDE BLOCKING IN WALLS AS REQUIRED FOR INSTALLATION OF MECH., PLUMB. & ELEC. EQUIP. AND SPECIALTIE

WALL TYPES SCHEDULE Y2				
TYPE	STC	UL#	DESCRIPTION	RATING
NON-RATED METAL STUD WALLS				
D2C	45		6" METAL STUDS @ 16" O.C. W/ 5/8" GYPSUM BOARD, EACH SIDE. EXTEND GYP. BD. TO DECK ABOVE. FILL CAVITY W/ 6" FIBERGLASS SOUND ATTENUATION BLANKET	
METAL STUD FURRING				
H3B			2-1/2" METAL STUDS @ 16" O.C. W/ 3/4" FIRE RATED PLYWOOD, ONE SIDE ONLY. EXTEND PLYWOOD TO DECK ABOVE	
H4B			3-5/8" METAL STUDS @ 16" O.C. W/ 5/8" GYPSUM BOARD, ONE SIDE ONLY. EXTEND GYP. BD. TO DECK ABOVE	



REVISIONS:

1					
2					
3					
4					
5					
6					
7					
8					
9					
10					



PHASE 2 · CONSTRUCTION DOCUMENTS

BIG SKY - TRAM BOTTOM STATION

BIG SKY RESORT
BIG SKY, MT 59716

BIG SKY

BIG SKY RESORT
50 BIG SKY RESORT RD.
P.O. BOX 160001
BIG SKY, MT 59716

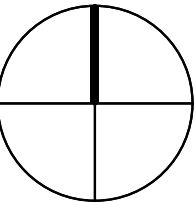


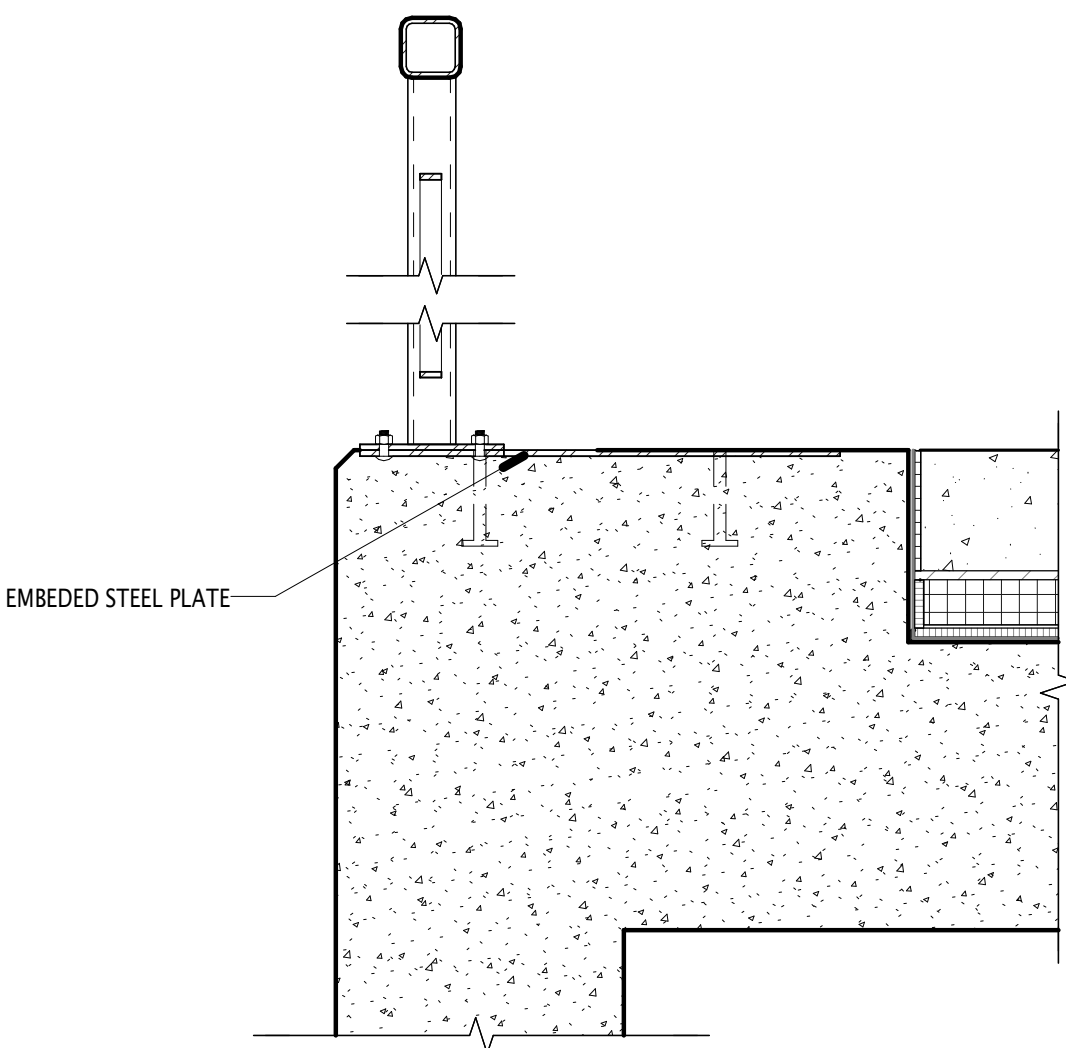
OWNER PROJECT NO.:
GSBS PROJECT NO.: 2020.068.01
ISSUED DATE: 04.29.2022

LOWER LEVEL PLAN (MECHANICAL)

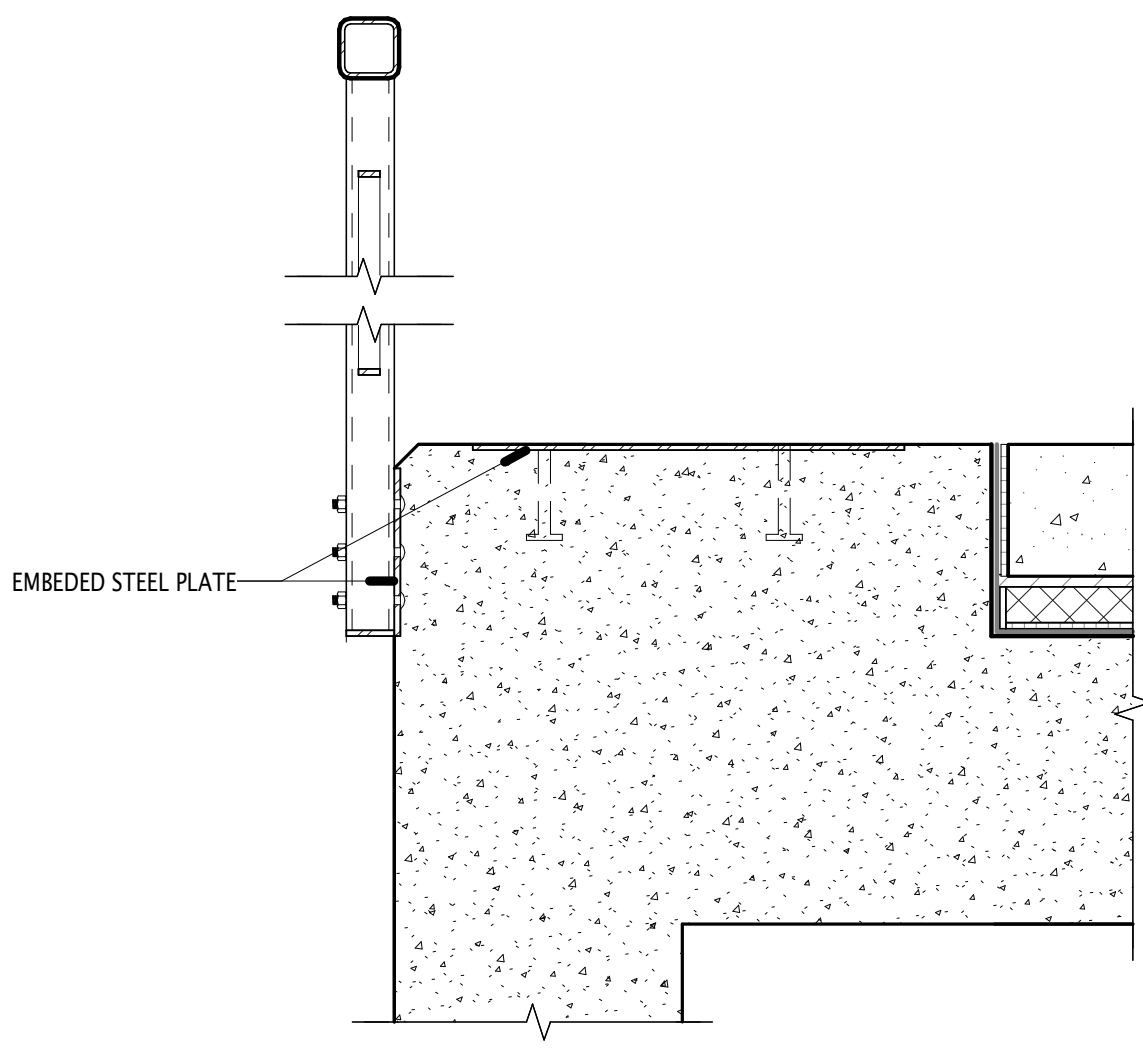
KEYPLAN

PROJECT NORTH





REMOVEABLE RAILING DETAIL 2



REMOVEABLE RAILING DETAIL 1

3 TYP. SLAB EDGE DETAIL 2 Y2
B2-A103 1 1/2" = 1'-0"

2 TYP. SLAB EDGE DETAIL 1 Y2
B2-A103 1 1/2" = 1'-0"

FLOOR PLAN LEGEND

EXISTING BASE PLATE EMBEDS ON MAT SLAB FOR FUTURE FREE FORM INSTALLATION

RUN CONDUITS WITHIN TOPPING SLAB FROM JUNCTION BOX TO STUB UP LOCATIONS SHOWN

EXISTING FLOOR DRAIN LOCATIONS. SEE PLUMBING DRAWINGS

SP.X

STOPING POINT GRID

DASHED RED LINES INDICATE TRAM MECHANICAL & ELECTRICAL EQUIPMENT. REFER TO TRAM CONSULTANT DRAWINGS

DIMS. SHOWN IN BLUE ARE FOR REFERENCE ONLY. REFER TO TRAM CONSULTANT DRAWINGS

WALL TYPES LEGEND

3 5/8" STUD (1 5/8" FLANGE, L/360, 5psf)		NOTE: LISTED SIZES ARE MINIMUM REQUIREMENTS BASED ON CEMCO METAL STUDS FRAMING.
33 mils	15'-4" High (Max.)	
43 mils	16'-8" High (Max.)	
54 mils	17'-10" High (Max.)	
6" STUD (1 5/8" FLANGE, L/360, 5psf)		CONTRACTOR SHALL PROVIDE MANUFACTURER'S PUBLISHED LIMITING HEIGHT TABLES TO DEMONSTRATE COMPLIANCE WITH MINIMUM STUD SIZE REQUIREMENTS.
33 mils	22'-8" High (Max.)	
43 mils	24'-9" High (Max.)	
54 mils	26'-6" High (Max.)	

WALL TYPES NOTES

1. ALL WALL DIMENSIONS SHOWN ON DRAWINGS ARE TO CENTER OF STUD UNLESS NOTED OTHERWISE.

2. WALL TYPE TO CONTINUE AT DOOR & WINDOW OPENINGS (TOP & BOTTOM) U.N.O.

3. FOR ANY WALL MISSING A WALL TYPE DESIGNATION, PROVIDE WALL TYPE *D1.C*.

4. WHERE METAL STUD FURRING OCCURS ADJACENT TO A CMU WALL, A COMPLETE SEPARATION BETWEEN WALLS IS REQUIRED. DO NOT ATTACH STUD WALL, FINISH SIDE ELECTRICAL BOXES, CONDUIT, ETC. TO WALL.

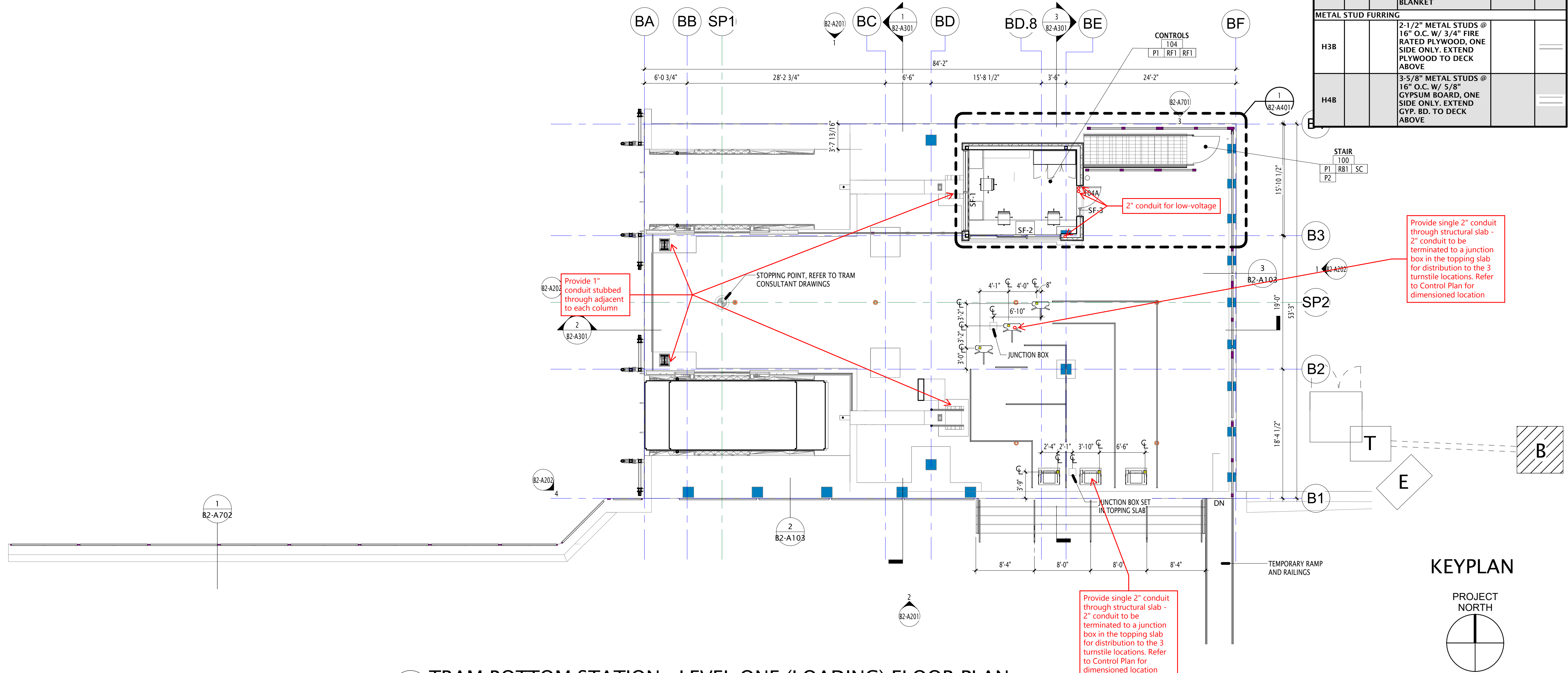
5. WHERE FREESTANDING METAL STUD FURRING OCCURS, PROVIDE HORIZONTAL METAL STRAPPING @ 4'-0" O.C. (VERTICAL) TO DECK ABOVE.

6. THE INTENT OF ACOUSTICAL PARTITIONS IS TO ACHIEVE AS HIGH AN STC RATING AS POSSIBLE WITHOUT USING ACOUSTICAL SEALANT. RUN GYPSUM BOARD AS TIGHT AS POSSIBLE AT FLOORS, CEILINGS & PENETRATIONS

7. U.N.O. USE WATER RESISTANT GYPSUM BOARD "GREEN BOARD" AT ALL WET WALL LOCATIONS, TYP. INCLUDING BUT NOT LIMITED TO BATHROOM WALLS, WALLS WITH TILE OR STONE FINISH.

8. PROVIDE BLOCKING IN WALLS AS REQUIRED FOR INSTALLATION OF MECH., PLUMB. & ELEC. EQUIP. AND SPECIALTIE

WALL TYPES SCHEDULE Y2				
TYPE	STC	UL#	DESCRIPTION	PLAN
NON-RATED METAL STUD WALLS				
D2C	45		6" METAL STUDS @ 16" O.C. W/ 5/8" GYPSUM BOARD, EACH SIDE. EXTEND GYP. BD. TO DECK ABOVE. FILL CAVITY W/ 6" FIBERGLASS SOUND ATTENUATION BLANKET	
METAL STUD FURRING				
H3B			2-1/2" METAL STUDS @ 16" O.C. W/ 3/4" FIRE RATED PLYWOOD, ONE SIDE ONLY. EXTEND PLYWOOD TO DECK ABOVE	
H4B			3-5/8" METAL STUDS @ 16" O.C. W/ 5/8" GYPSUM BOARD, ONE SIDE ONLY. EXTEND GYP. BD. TO DECK ABOVE	



1 TRAM BOTTOM STATION - LEVEL ONE (LOADING) FLOOR PLAN
B2-A103 1/8" = 1'-0"

REVISIONS:



PHASE 2 · CONSTRUCTION DOCUMENTS

BIG SKY - TRAM BOTTOM STATION

BIG SKY RESORT
BIG SKY, MT 59716

BIG SKY

BIG SKY RESORT
50 BIG SKY RESORT RD.
P.O. BOX 160001
BIG SKY, MT 59716



OWNER PROJECT NO.:
GSBS PROJECT NO.: 2020.068.01
ISSUED DATE: 04.29.2022

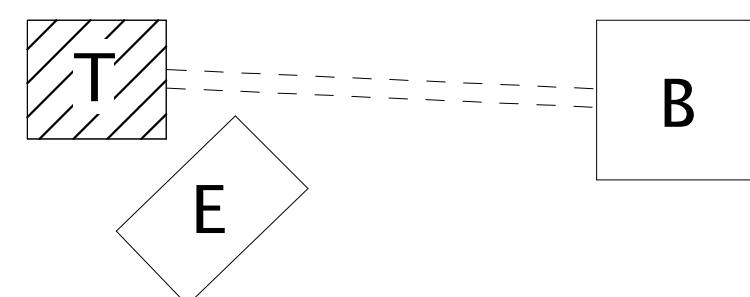
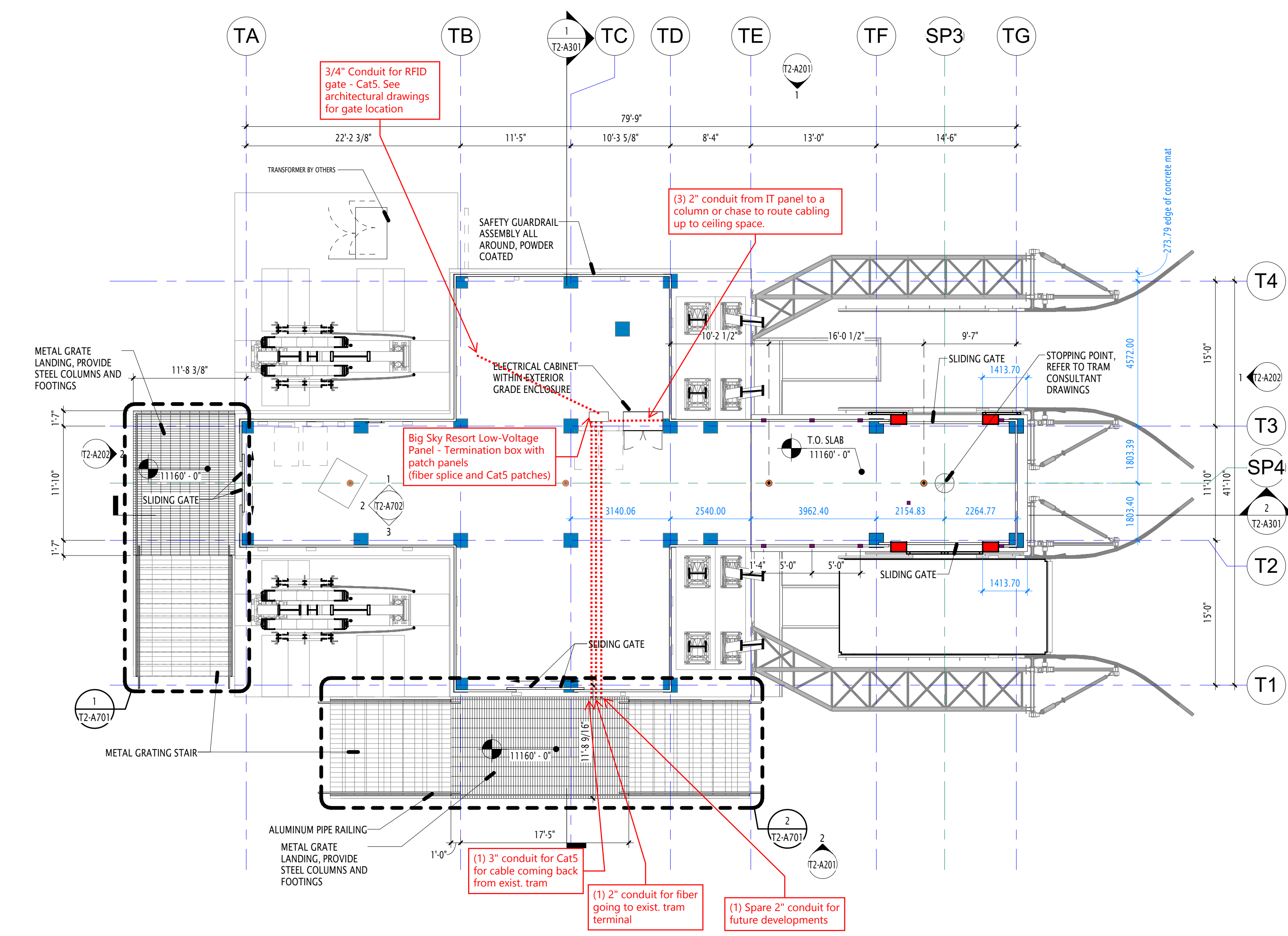
LEVEL 1 FLOOR PLAN (LOADING)

SLAB CONTROL LEGEND

- PLATE INSERTS BY TRAM CONSULTANT DRAWINGS
- BASE PLATE EMBEDS ON SUSPENDED SLAB - SEE STRUCTURAL DRAWINGS
- EMBEDDED STEEL PLATE FOR FUTURE RAILING LOCATIONS
- FLOOR DRAIN LOCATIONS. SET 1" BELOW F.F.E. CONTRACTOR TO SLOPE SLAB 1/8"/12" TO DRAINS. PROVIDE "X" SLEEVE WITH CAP. SEE PLUMBING DRAWINGS
- STOPING POINT GRID

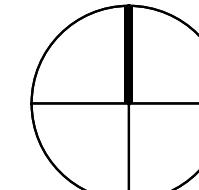
DIMS. SHOWN IN BLUE ARE FOR REFERENCE ONLY. REFER TO TRAM CONSULTANT DRAWINGS

REVISIONS:



KEYPLAN

PROJECT NORTH



PHASE 2 - DESIGN DEVELOPMENT

BIG SKY - TRAM TOP STATION

BIG SKY RESORT
BIG SKY, MT 59716

BIG SKY



BIG SKY RESORT
50 BIG SKY RESORT RD.
P.O. BOX 160001
BIG SKY, MT 59716

OWNER PROJECT NO.:
GSBS PROJECT NO.:
ISSUED DATE:

2020.068.01
04.29.2022

LEVEL 1 FLOOR PLAN (LOADING)

TRAM TOP STATION - LEVEL 1 (LOADING)

1
T2-A101/ 1/8" = 1'-0"

* THIS SHEET IS INTENDED TO BE VIEWED IN COLOR.

T2-A101

REV