

TRIBUNE FULL HEIGHT

ULTRA SECURE SINGLE READER INDUSTRIAL TURNSTILE



**- 10 YEAR -
GUARANTEE**

INDUSTRY LEADER

- The TRIBUNE provides the highest levels of security available in a turnstile
- 100% validated entry and exit transactions
- Only one reader required for bi-directional access
- Exported worldwide

APPLICATIONS

- Suited for applications requiring the strictest controls over access and time & attendance
- Used extensively in applications such as mines, factories and warehouses
- Ideal for integration with any biometric reader system

DESIGNED FOR

- Interior and exterior installations
- Severe operating conditions

AVAILABLE CONFIGURATIONS

- 4 arm (90°)
- Single

SECURITY RATING

- 4 out of 5



ISO 9001:2015

UNIQUE FEATURES

ROTATION LOCKING MECHANISM

- CE conformity
- Ultra heavy-duty electromechanical rotation locking mechanism
- Bi-directional operation
- Designed by professional engineers
- Tried, tested and perfected over a period of over 20 years

RELIABLE TECHNOLOGY

- Suspended rotor technology - eliminating stress on the base bearing
- Self-centering rotation system - rotor returns to starting position after every rotation
- Shock absorbing rubber coupling system
- Anti-Trap® safety system - no mid-rotation locking or trapping in the event of a power failure
- Programmable logic with user diagnostic features
- Mechanical key override - clockwise and anti-clockwise directions (fail-secure)

DURABLE FEATURES

- Zinc plated for corrosion resistance
- Ultra quiet, buffered solenoids and pawls
- Solenoids rated for 100% duty cycle
- Case hardened locking disk and pawls - eliminating any wear
- Factory settings need no further adjustment
- No routine maintenance whatsoever, ever

GUARANTEED MANUFACTURED TO LAST

- 10 year mechanical guarantee
- 1 year electrical guarantee

PERPETUAL BASE BEARING

- Fitted to all TRIBUNE turnstiles

RELIABLE TECHNOLOGY

- Combination of stainless steel and self-lubricating engineering plastics

DURABLE FEATURES

- Designed for the harshest of conditions
- 100% corrosion resistant
- Unaffected by dust, dirt or moisture
- Self-lubricating

GUARANTEED MANUFACTURED TO LAST

- Zero maintenance
- 10 year mechanical guarantee

TECHNICAL SPECIFICATIONS

POWER	220 Volt AC (110 Volt AC on request)
FREQUENCY	50Hz / 60Hz
POWER CONSUMPTION	50W
SOLENOID VOLTAGE	24 Volt DC (12 Volt DC on request)
LOGIC VOLTAGE	24 Volt DC
DIMENSIONS	<ul style="list-style-type: none">• 1 700mm wide x 2 125mm high• 1 730mm wide x 2 250mm high - recommended minimum opening size
ROTOR DIAMETER	1 200mm
ROTOR ARM CONFIGURATION	4 arm (90°)
ROTOR ARMS	50mm diameter tube arms
WEIGHT	220kg
DESIGN	Modular bolt-together design for ease of transport and installation. Can be packed in broken-down form either onto a pallet or into a crate for transport
SYSTEMS INTEGRATION	<ul style="list-style-type: none">• Integrates with all access control and time & attendance systems• Unlocking for entry / exit rotation controlled through normally open dry contact• Transaction / rotation complete output• Integral wireways with draw wires in place - no exposed wires

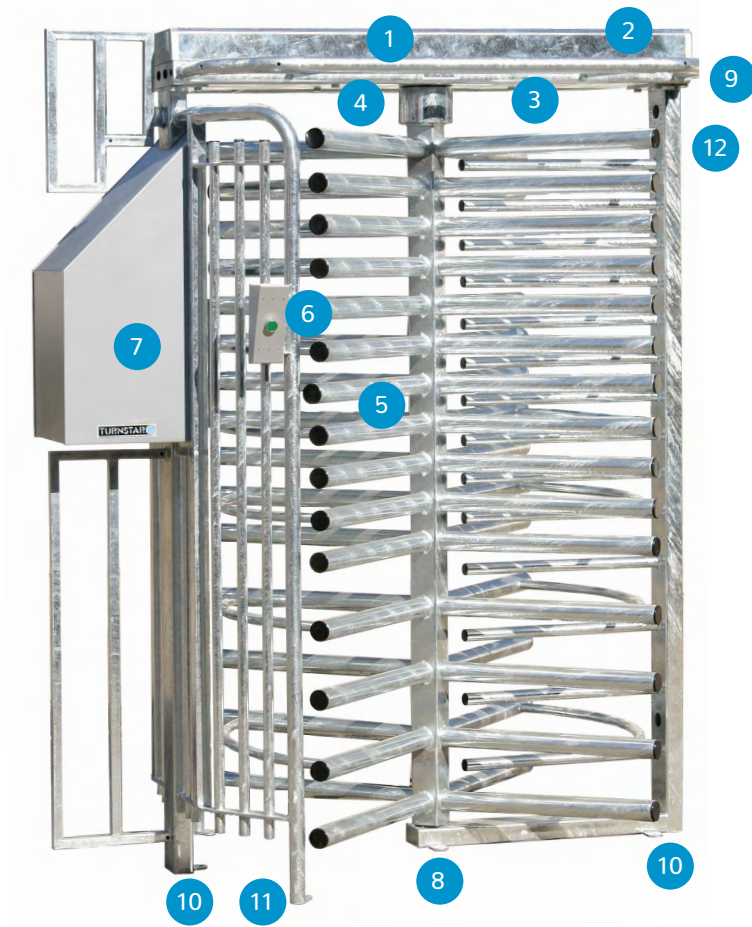
KEY FEATURES SUPPLIED AS STANDARD

BATTERY BACKUP	Battery backup with two 12 volt 7Ah batteries connected in series providing up to 1 000 transactions
OVERHEAD BARRIER	Anti-climb protection - preventing pedestrians from climbing out of the turnstile when in the read position
TUBE SPACING	Tube arms are spaced 50mm apart at reader height to physically prevent biometric clocking from outside the turnstile
RECESSED READER MOUNTING	Physically prevents biometric clocking from outside the turnstile and provides the reader with protection from the elements

MANUFACTURING OPTIONS

ROTATION	Electrically controlled bi-directional rotation (factory standard)
LOCKING	Fail-secure auto-lock on power failure (factory standard)
FIRE ALARM	Free rotation when triggered indefinitely
SPECIAL PHYSICAL DESIGN OPTIONS	<ul style="list-style-type: none">• Restrictor tubes for increased security• Special split cover for low ceilings• Special internal mechanism dust cover for dirty environments• Heavy-duty base for portability (with forklift channels)
ACCESSORY OPTIONS	<ul style="list-style-type: none">• LED red circle and green circle indicator light mounted in reader box• LCD transaction counter with reset key switch• Random search device• Low energy light on underside of channel
FINISH OPTIONS	<ul style="list-style-type: none">• Mild steel with UV resistant polyester exterior powder coat finish (charcoal blue hammertone) ■• Mild steel with hot dip galvanised finish ▲• 304 grade brushed stainless steel• 316 grade brushed stainless steel ▲ <p>suitable for highly corrosive environments other colours available on request</p>

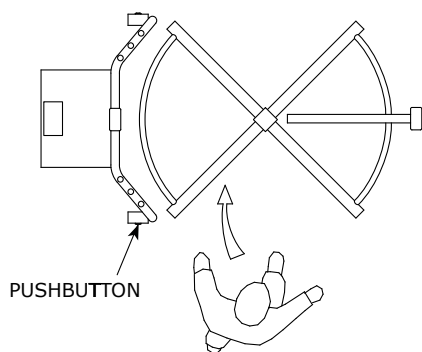
STAR QUALITIES



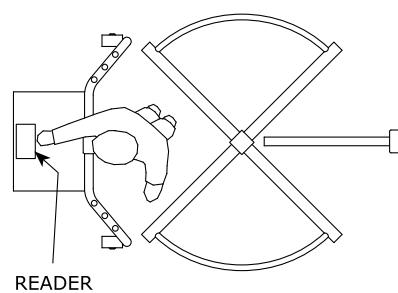
- 1 Rotation locking mechanism and electronic control panel - incorporates:
 - Anti-Trap® safety system
 - Suspended Rotor technology
- 2 Lockable top cover
- 3 Mechanical key override
- 4 Shock absorbing rubber coupling
- 5 50mm diameter tube arms spaced 50mm apart
- 6 Cycle start pushbutton
- 7 Secure reader mounting position
- 8 Rotarun® perpetual base bearing
- 9 Wiring side entry point
- 10 Wiring bottom entry point
- 11 Floor bolting positions - 7 off
- 12 Wall bolting positions - 1 off

OPERATING CYCLE

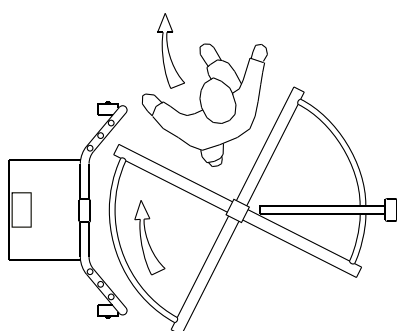
STEP 1: PUSHBUTTON IS PRESSED TO ALLOW ENTRANCE INTO THE LOCKED TURNSTILE



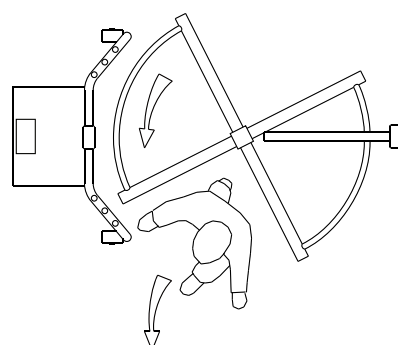
STEP 2: READER IS ACCESSED AND RECOGNITION TAKES PLACE



STEP 3A: READER CONFIRMATION - ACCESS ALLOWED TURNSTILE ROTATES A FURTHER 90° AND RELOCKS



STEP 3B: READER CONFIRMATION - ACCESS DENIED TURNSTILE ROTATES 90° IN REVERSE AND RELOCKS

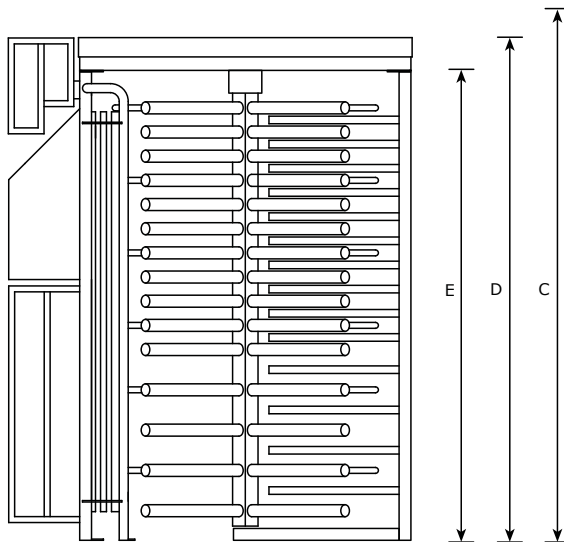
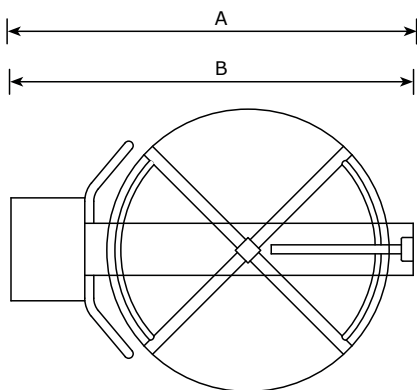


TRIBUNE RANGE

TRIBUNE SINGLE

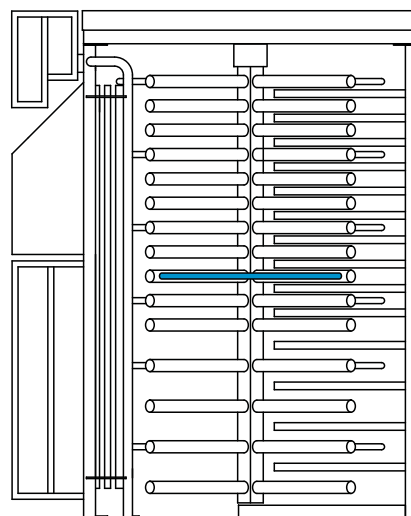
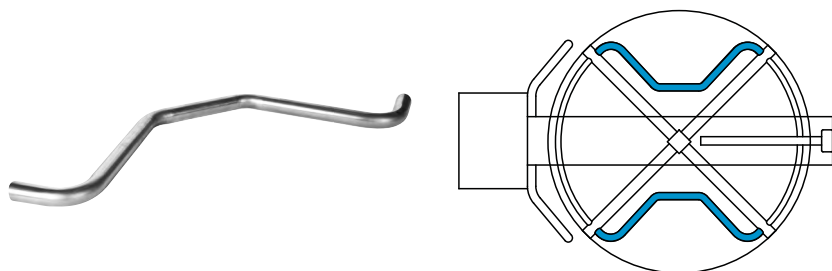
A	Recommended opening width	1 730mm
B	Turnstile width	1 700mm
C	Recommended opening height	2 250mm

D	Turnstile height	2 125mm
E	Headroom	1 986mm



MAXIMUM SECURITY OPTION

- RESTRICTOR TUBES can be welded to the turnstile rotor in order to limit the amount of space available in the quadrant. This addition increases the level of difficulty for two pedestrians to go through the turnstile together.
- The RESTRICTOR TUBE is supplied in matching finish to the turnstile.



SPECIFICATION FOR ARCHITECTS AND SPECIFIERS

TRIBUNE full height ultra secure single reader turnstile complete with anti-climb overhead barrier and battery backup, in finish (as mentioned on page 4).

Due to our policy of continuous improvement, products are subject to change without notice.

Custom designs available on request.