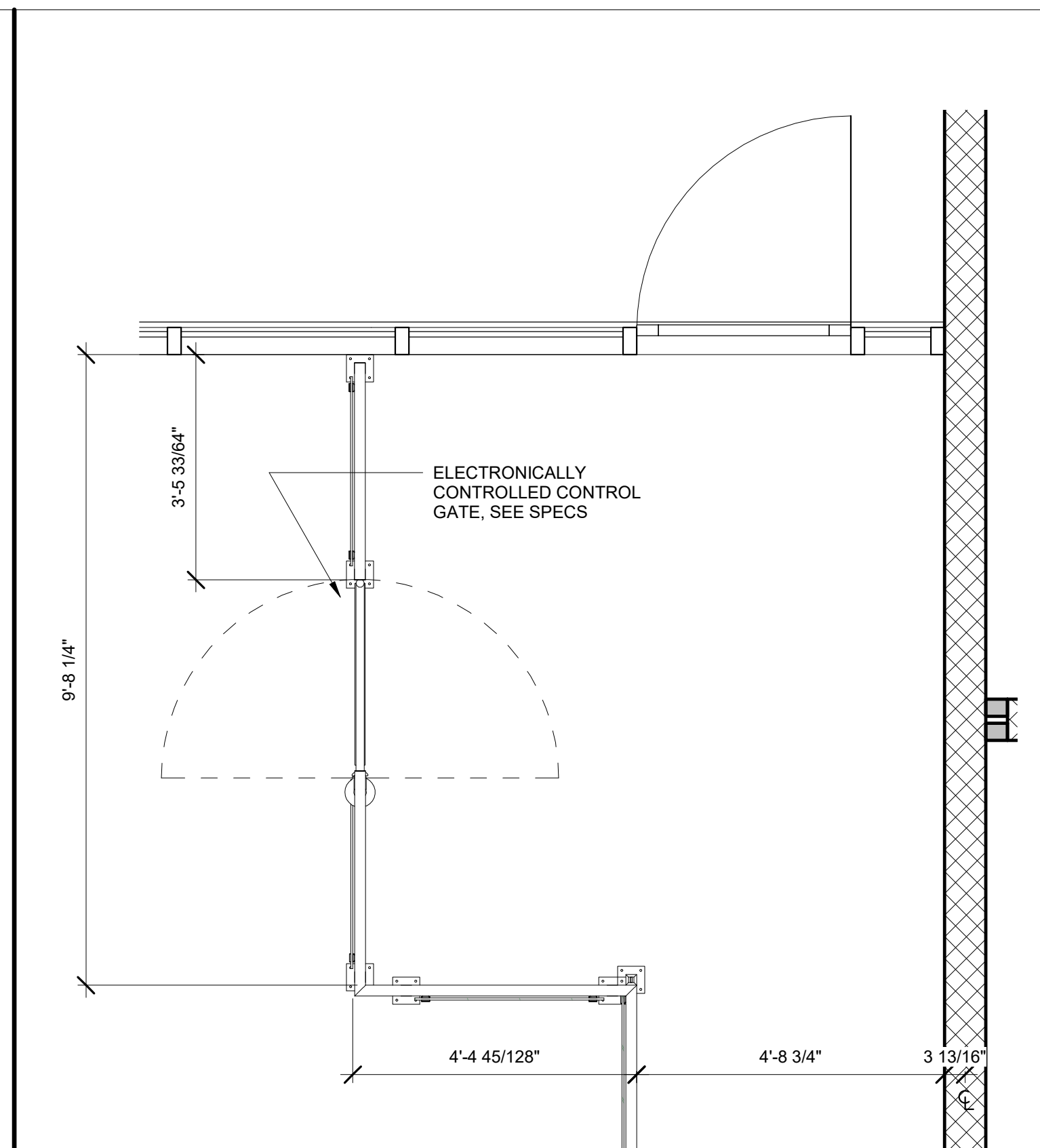


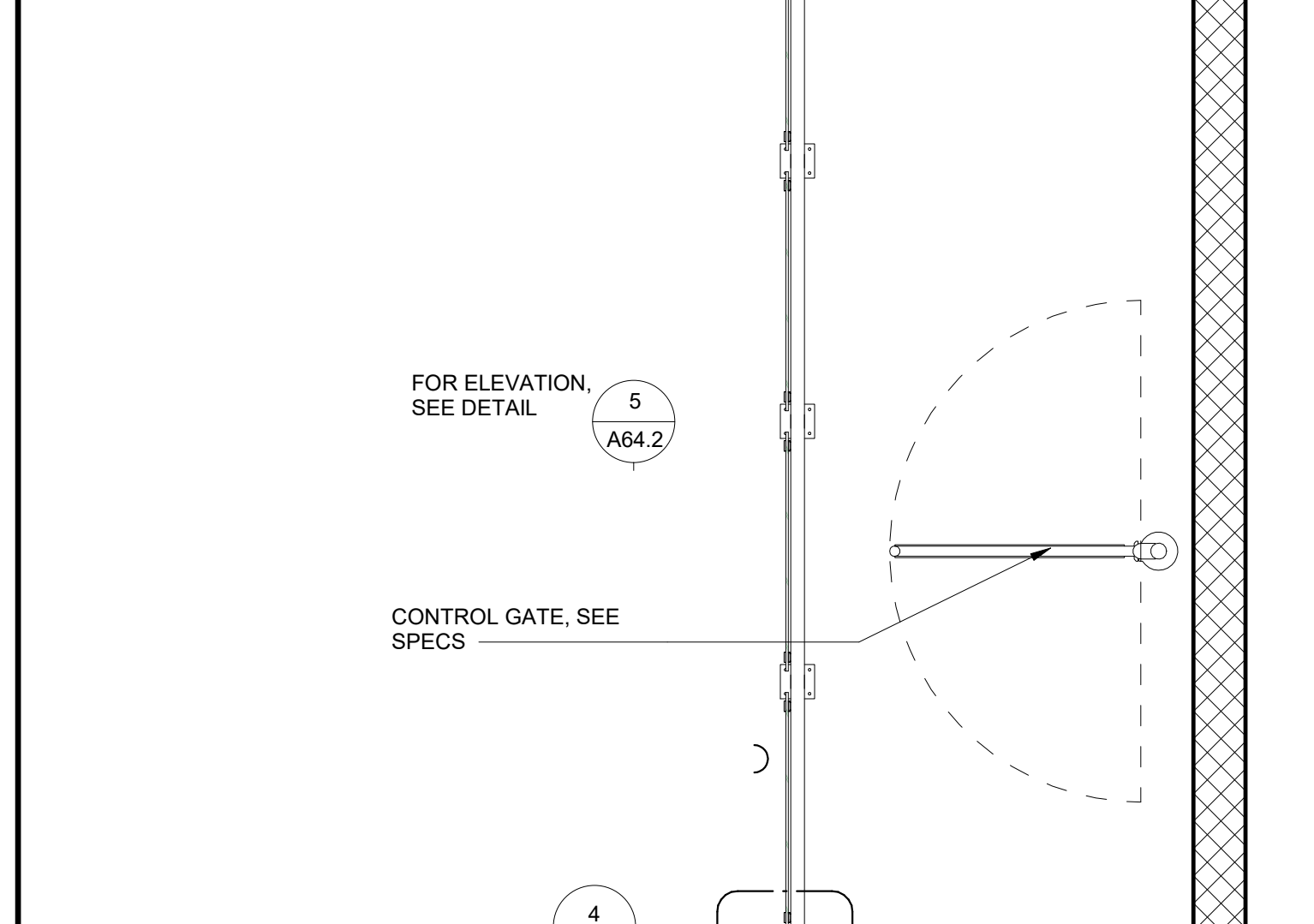


CROWD CONTROL PARTITION 12\"/>

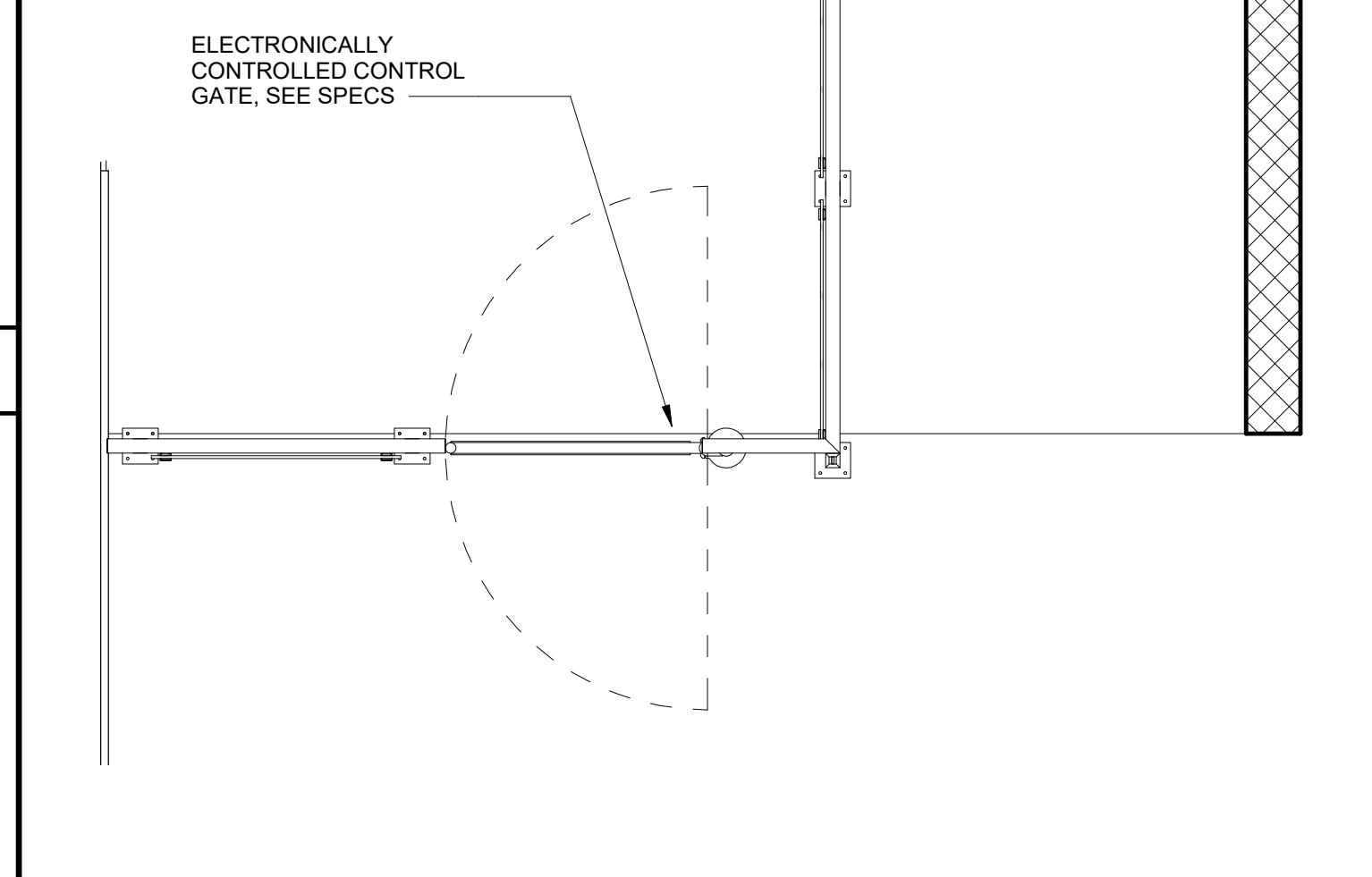
REVISIONS		APPROV.
NO.	DATE	DESCRIPTION
1	08/09/2022	RESPONSE TO 1ST PLAN CHECK COMMENTS



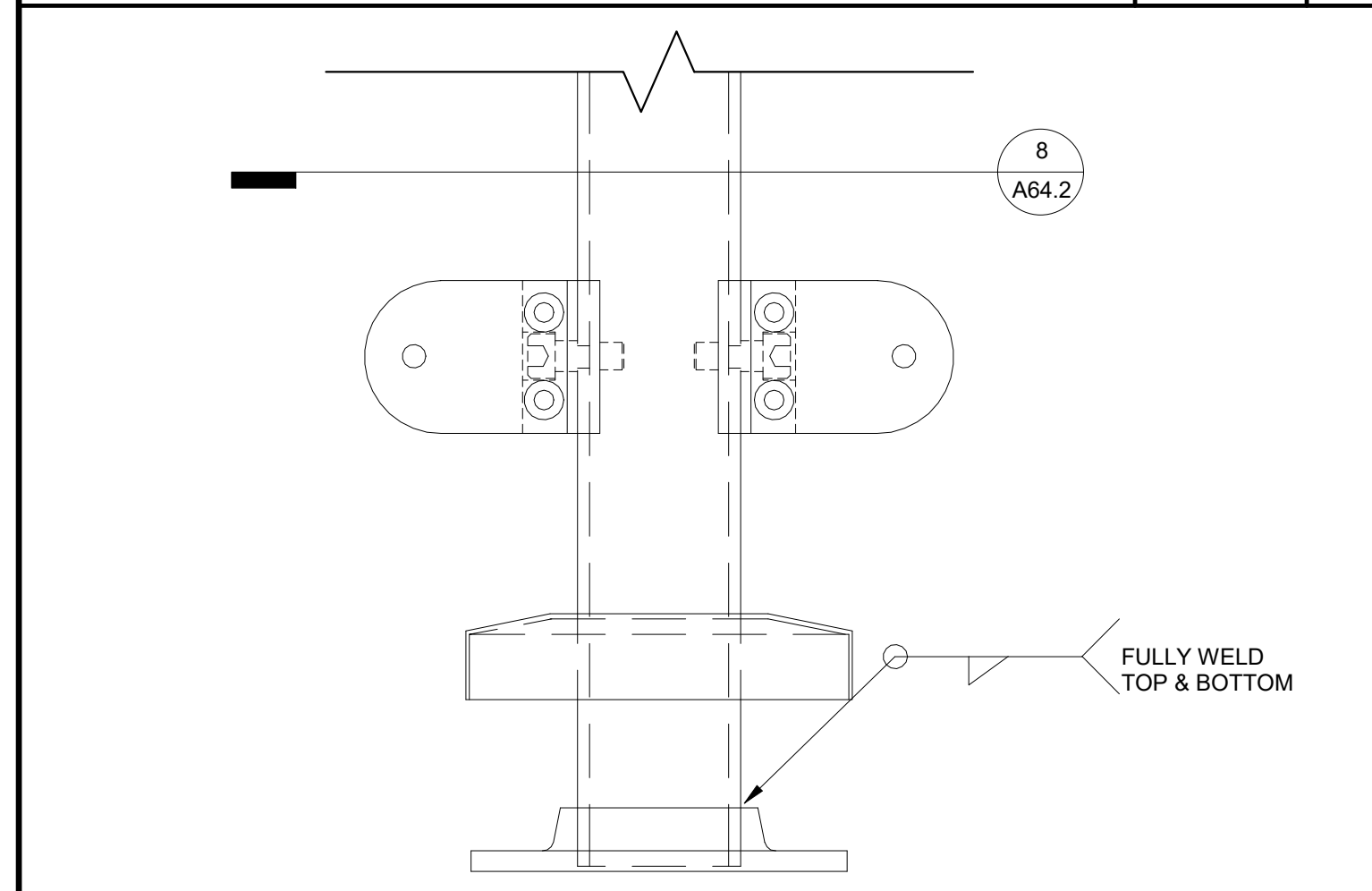
POST WITH ROUNDED CLIP ATTACHMENTS 6\"/>



TOP OF POST 6\"/>

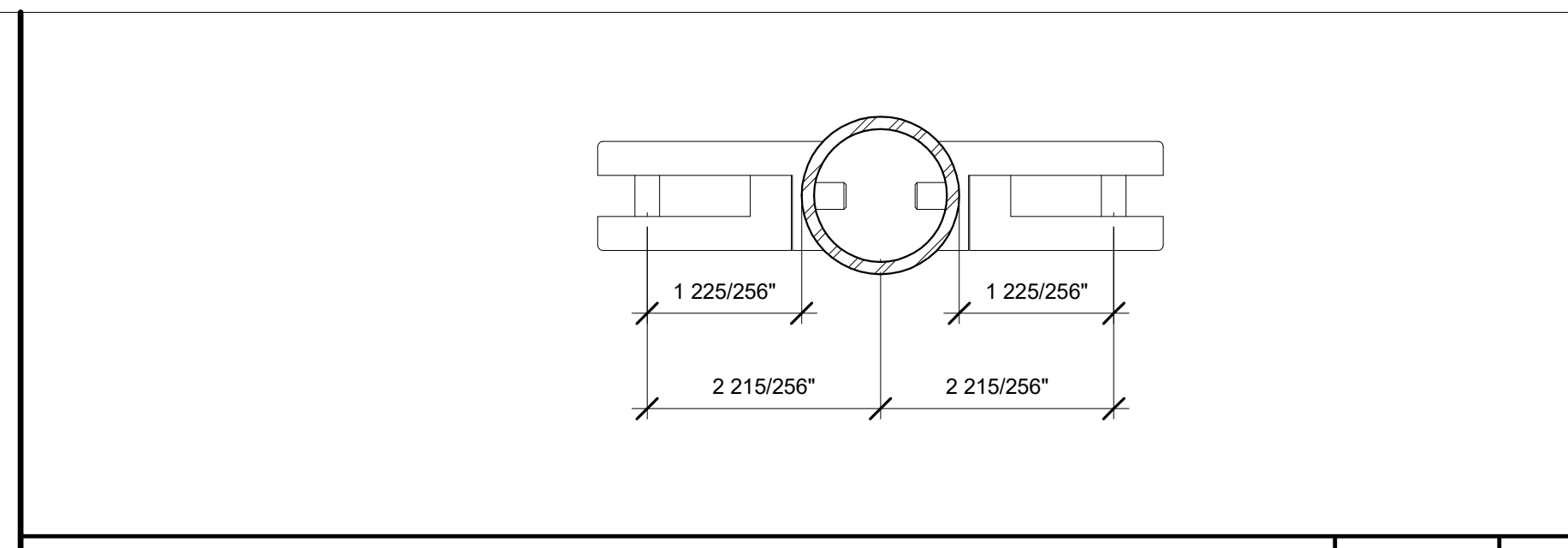


GLASS GUARDRAIL ELEVATION 3/4\"/>

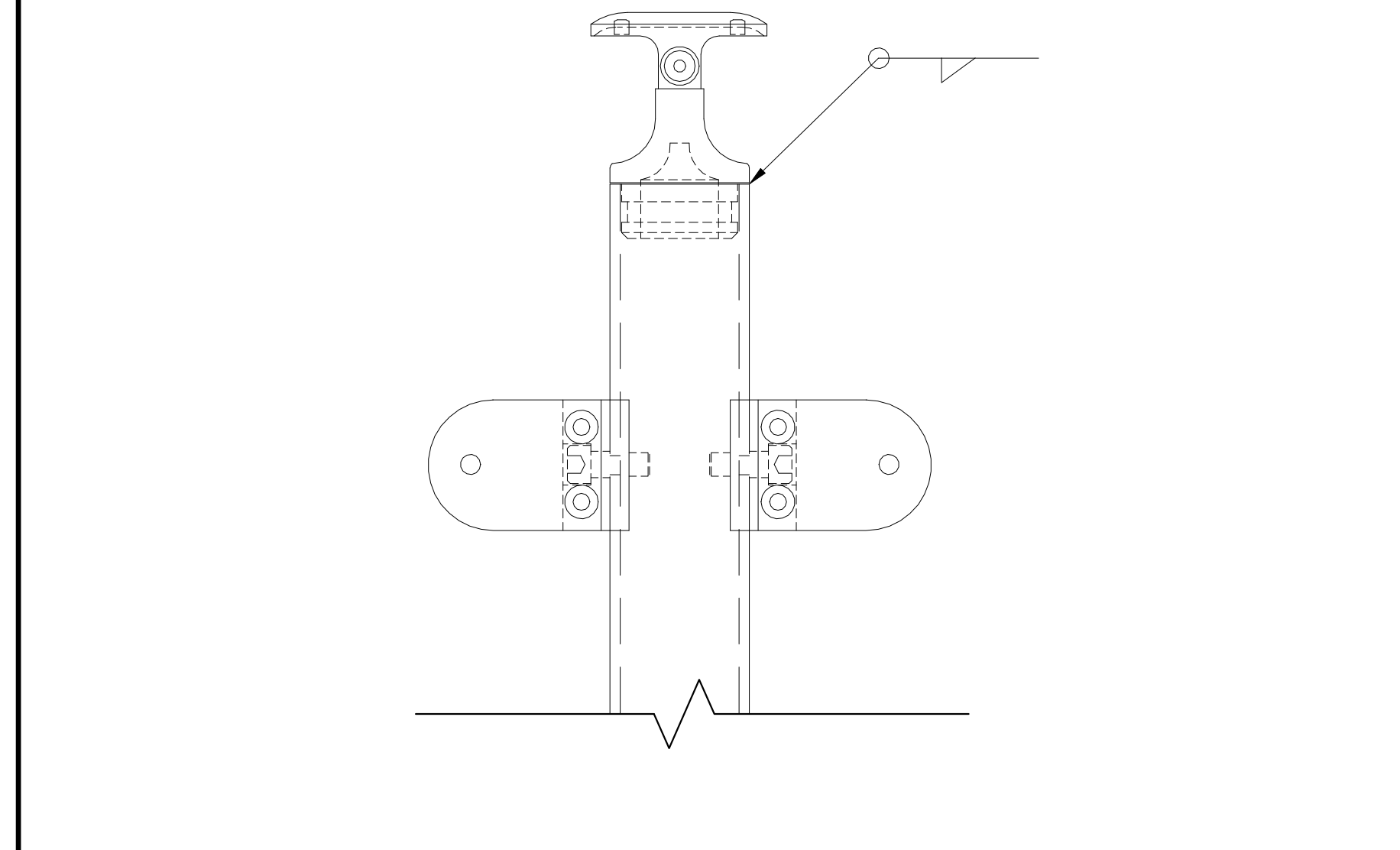


SURFACE MOUNTED GLASS RAILING POSTS 3\"/>

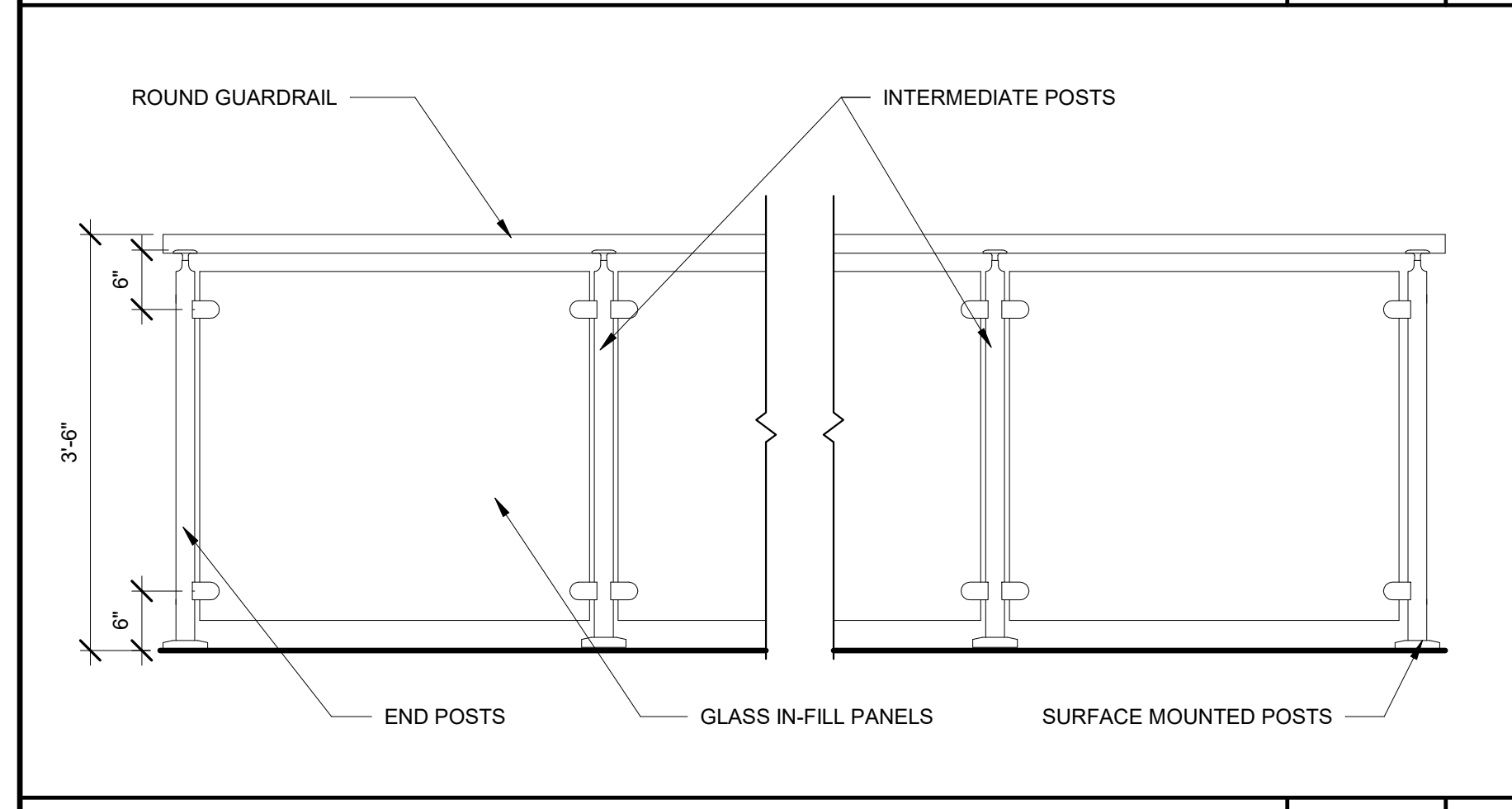
REVISIONS		APPROV.
NO.	DATE	DESCRIPTION
1	08/09/2022	RESPONSE TO 1ST PLAN CHECK COMMENTS



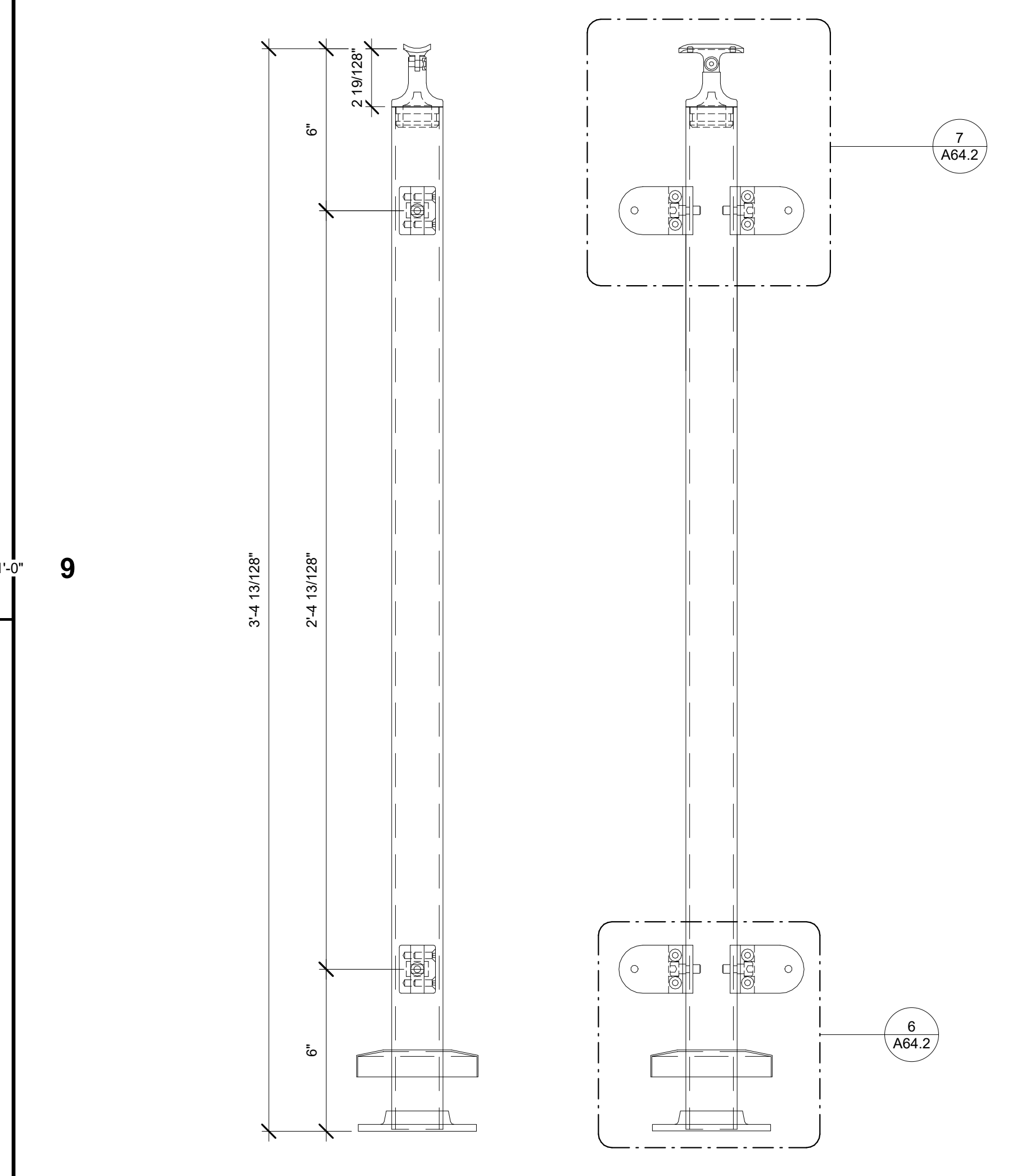
POST WITH ROUNDED CLIP ATTACHMENTS 6\"/>



TOP OF POST 6\"/>

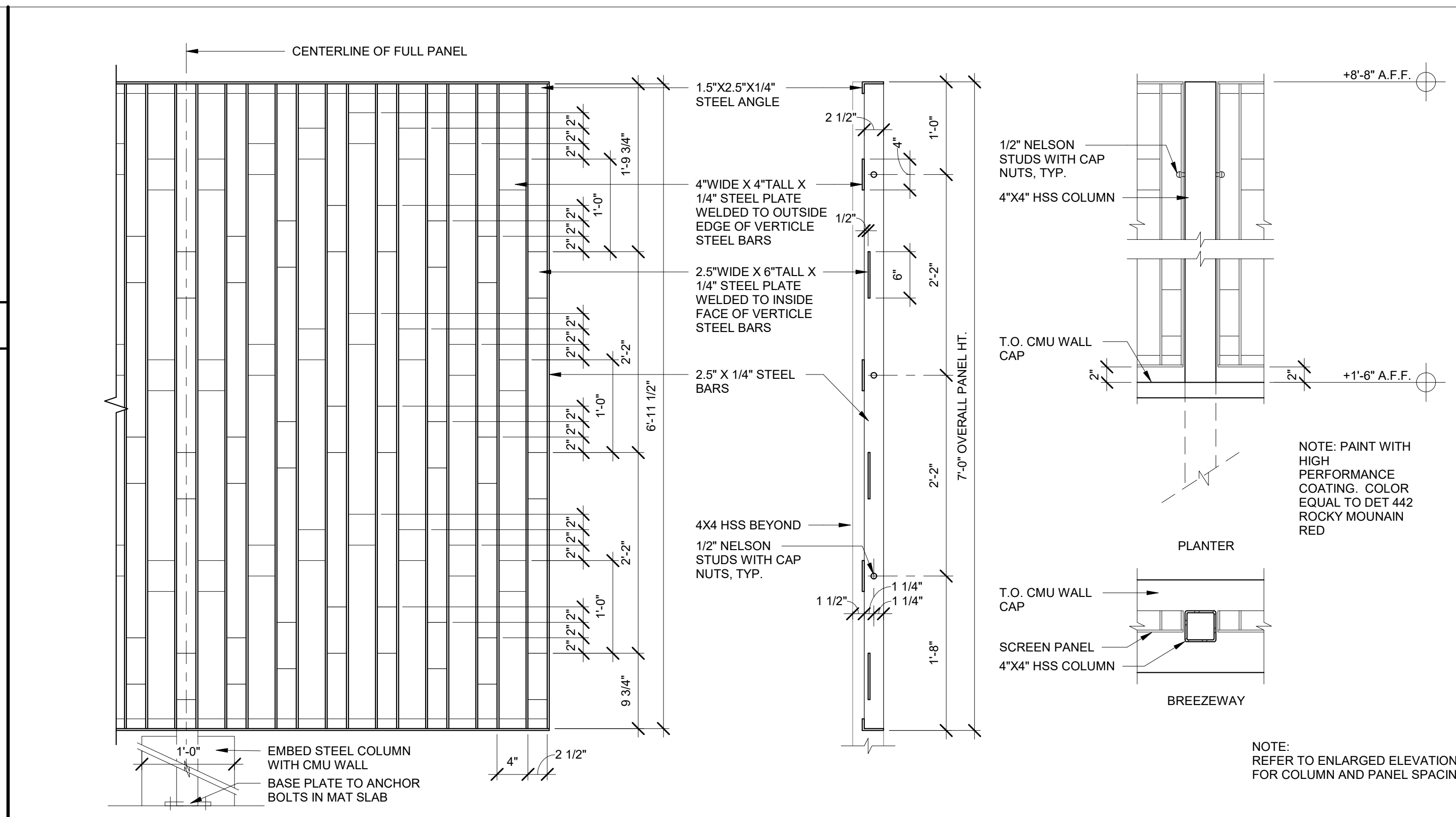


GLASS GUARDRAIL ELEVATION 3/4\"/>

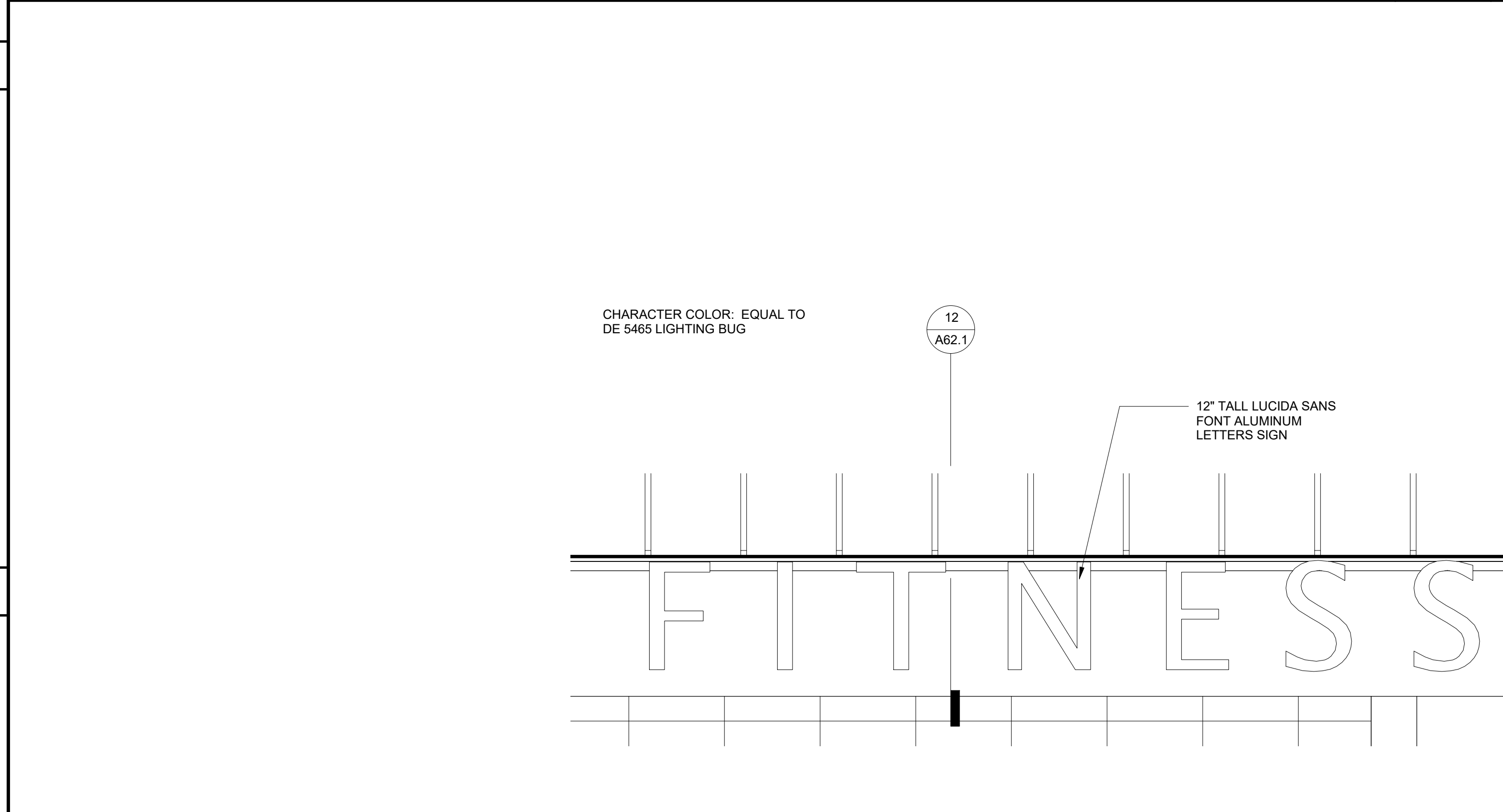


SURFACE MOUNTED GLASS RAILING POSTS 3\"/>

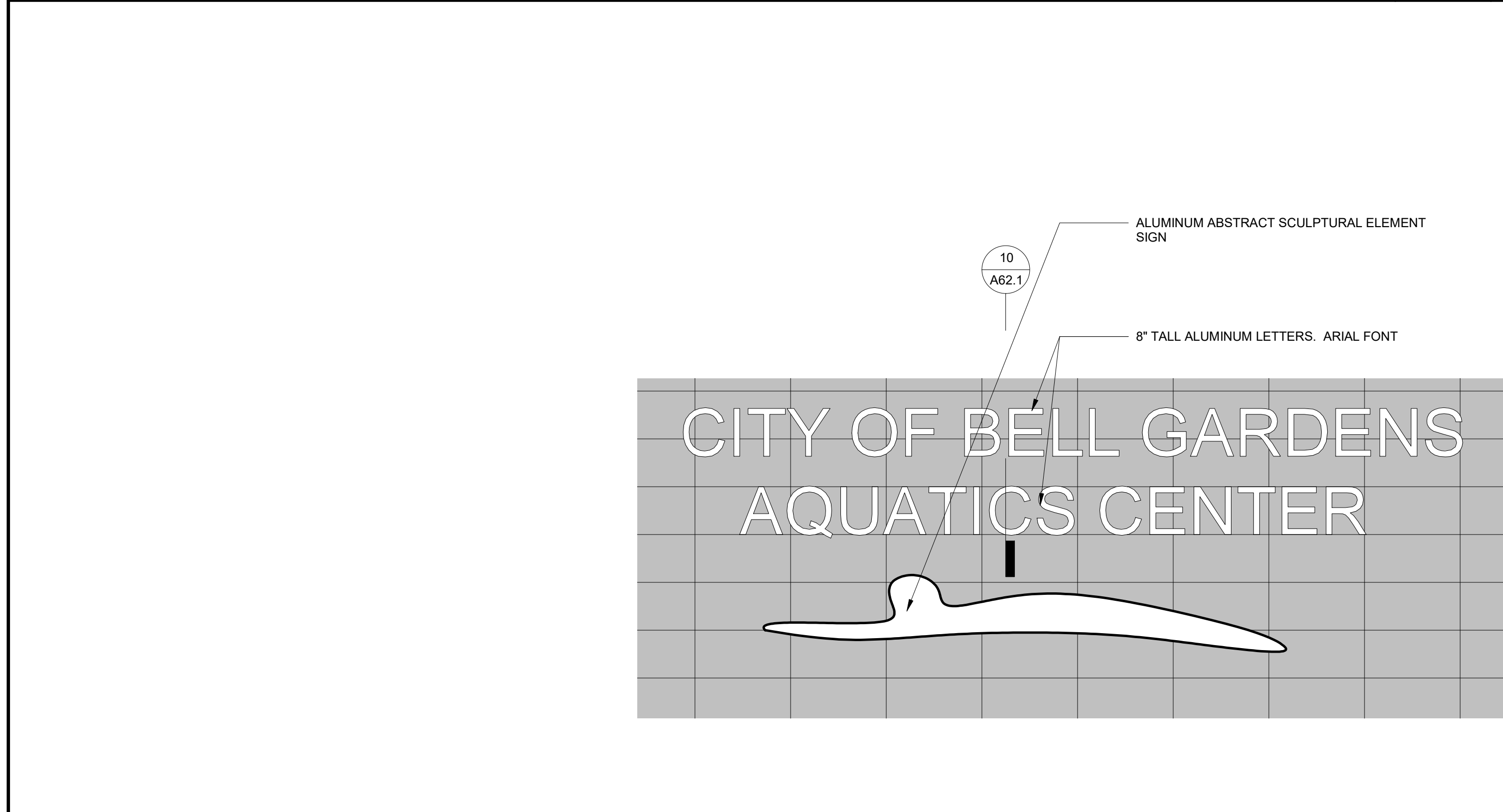
REVISIONS		APPROV.
NO.	DATE	DESCRIPTION
1	08/09/2022	RESPONSE TO 1ST PLAN CHECK COMMENTS



SCREEN WALL DESIGN 1\"/>



FITNESS ROOM FASCIA SIGN 3/4\"/>



ENTRY SIGN ENLARGED 3/4\"/>



UNDERGROUND SERVICE ALERT OF SOUTHERN CALIFORNIA
 ATTENTION IS DIRECTED TO THE POSSIBLE EXISTENCE OF UNDERGROUND FACILITIES NOT SHOWN OR IN A LOCATION DIFFERENT FROM WHAT IS SHOWN ON THE PLANS OR IN THE SPECIAL PROVISIONS. THE CONTRACTOR SHALL TAKE STEPS TO ASCERTAIN THE EXACT LOCATION OF ALL UNDERGROUND FACILITIES PRIOR TO START OF WORK THAT MAY DAMAGE SUCH FACILITIES OR INTERFERE WITH THEIR SERVICES. BEFORE EXCAVATION, THE CONTRACTOR SHALL VERIFY THE LOCATION OF UNDERGROUND UTILITIES BY CONTACTING UNDERGROUND UTILITIES SERVICE ALERT AT 1 (800) 422-4133.

CONSULTANT:
SVA ARCHITECTS
 6 HUTTON CENTRE DR. SUITE 1150
 SANTA ANA, CA 92707
 T 949.809.3380 WWW.SVA-ARCHITECTS.COM

UNDER THE SUPERVISION OF:
RJM DESIGN GROUP
 2129 Centre Expressway
 San Juan Capistrano, CA 92675
 www.rjmdesigngroup.com
 949.432.2800 Fax
 949.432.2800 John

DESIGNED BY: EC
 DRAWN BY: TP
 CHECKED BY: ECLR DATE: 08/11/23