

POST-SUPPORTED WALKWAY CANOPIES



AN ALL-EXTRUDED WALKWAY CANOPY SOLUTION

Post supported walkway covers by Mapes Architectural Canopies provide a pre-engineered economical alternative for both free standing and wall mounted applications. The all-extruded Super Lumideck is designed to meet local building codes for snow and wind load. Free spans up to 20', dependent upon local codes and load requirements, can provide a high strength protective cover with a minimum of support structure.

POST-SUPPORTED WALKWAY CANOPIES

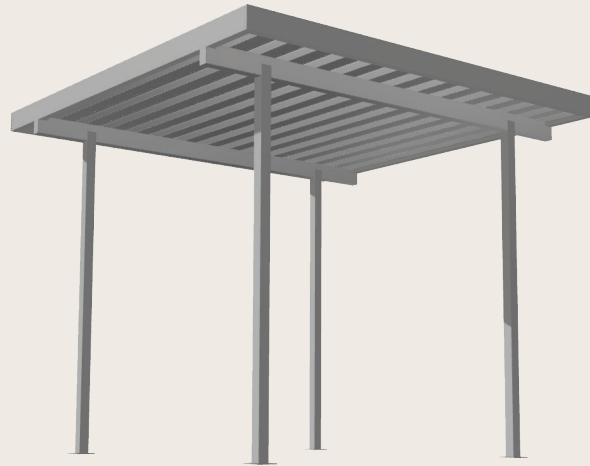
All-extruded Aluminum (T6 - 6063)

Fascia .125"

Decking .078"

Deflection rating L/180

Note: Engineered stamped calcs available in all 50 states



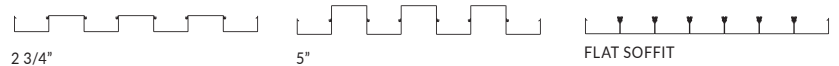
FEATURES

- Pre-engineered
- High Load Capacity
- Long Span
- All Aluminum Canopy
- All-extruded Canopy
- Custom Colors
- Internal Drainage

APPLICATIONS

- Turnstile Covers
- Walkway Covers
- Retail Branding
- Office Buildings
- Bus Shelters
- Equipment Protection
- ADA Access Doors
- Schools

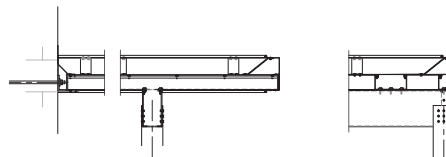
DECK OPTIONS



FASCIA OPTIONS

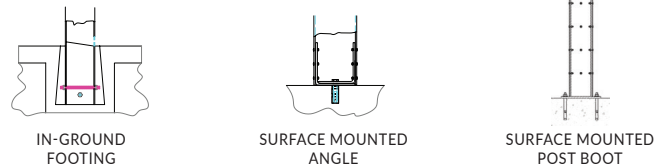


CANOPY DETAILS

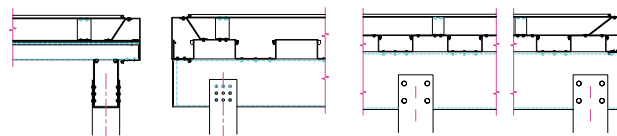


WALL MOUNTED STYLE

POST ATTACHMENT DETAILS



SECTION DETAIL



4" X 7" BEAM

4" X 4" POST

6" X 10" BEAM AND 6" X 6" POST
 AVAILABLE FOR HIGH LOAD
 AND HIGH SPAN APPLICATIONS