

CBL07 High Security Bank Locking Controller

CBL07 High security bank locking controller

Complete with

- Mimic desk mount control panel and 20m of cable
- Presence sensors
- Door status detectors (drilled into the door and the bulkhead)
- Last exit button on the Mimic control panel
- First entry keyswitch on exterior frame of mantrap

The CBL07 is capable of controlling one to three cubicles at once. The price list refers:

CBL07S – single cubicle

CBL07D – double cubicle

CBL07T – triple cubicle

The CBL07 uses the **CherryTech** control panel together with the **Mimic desktop panel** (supplied without a housing and designed to be fitted inside the security desk).

Note: The CherryTech control panel runs on 12V and is supplied with a battery charger board as standard. The only thing excluded are the batteries.

The most common configuration will be the CBL07D for a double cubicle. One side will be for entry only, the other side will be for exit only.

Features of the Mimic desktop panel:

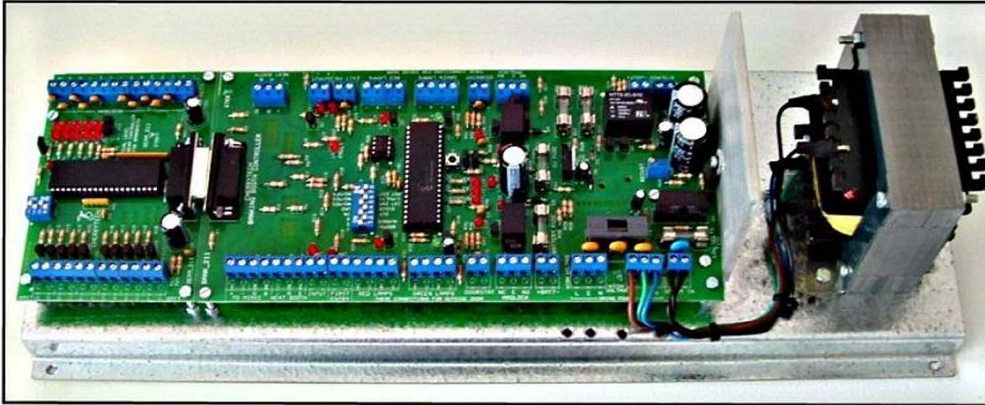
- Regular mode for staff first entry (in the morning) – activated by a keyswitch on the frame of the mantrap.
- Regular mode for staff last exit (in the evening) – activated by a pushbutton on the Mimic panel.
- 3-position keyswitch to put cubicle in bank-closed, bank-open or evacuate mode
- Keyswitch to put cubicle in single or multiple person mode (in which case multiple occupancy of the cubicle is ignored)
- Last-exit pushbutton to set the exit cubicle to lock both doors after the last person leaves
- Staff-entry pushbutton to allow staff to enter the bank while it is in bank-closed mode (one person at a time)
- Panic pushbutton to lock all doors in the event of a robbery
- Reset pushbutton to cancel panic mode and resume normal operation
- LED to indicate mains power failure
- LED to indicate the locked/unlocked status of all doors

Note: If the bank has been in bank-open mode, the inner door of the exit-booth will be unlocked. When the key is turned to bank-closed position, the entry-booth will lock both doors, but the exit booth continues to automatically allow customers and staff to exit. Only when the last person presses the last-exit pushbutton and departs will the exit booth lock its inner door.

Note: Only one cable is required to connect a set of man-traps to the Mimic desktop panel. Connections are looped from one control panel to the other.

CHERRYTECH BANK BOOTH CONTROLLER

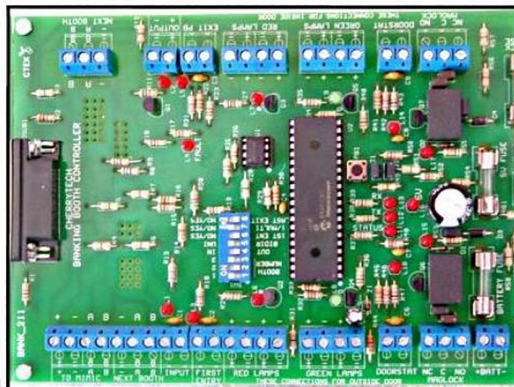
Cherrytech is proud to announce its new bank booth controller, which will replace the IO2002 controller. The purpose of this redesign is to offer the installer a much simpler unit to install, with a great reduction in installation time, plus significantly less wiring between the Mimic panel as well as any adjacent bank booths.

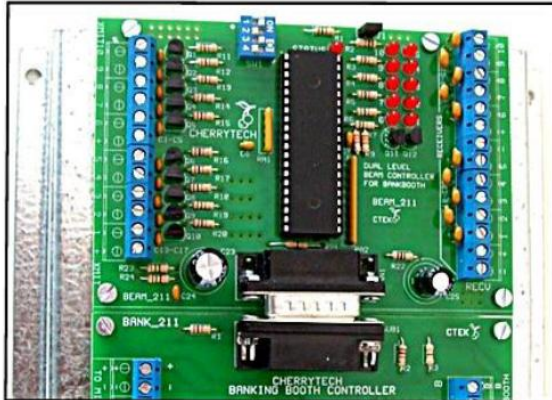


The power supply/charger circuit is now integrated on the controller. There are now additional fuses for lock power and lamp power. If the lamps are deliberately damaged, the fuse will blow, but the locked doors will remain locked. All wire connections are clearly marked by function, rather than by input/output numbers. Settings are done with the dipswitches on the board. A pushbutton and jumpers are included to allow user setting of the door unlock timers.

The mimic is connected to the controller by a single 2-pair cable. Only one booth is connected to the mimic. Additional booth controllers are interconnected using 3 wires.

A new infrared beam controller has been designed to partner this booth controller. It plugs directly onto the end of the booth controller. It has been upgraded to cope with a maximum of 10 infrared beams. These can be arranged as a single row of beams or as a double row of 5 beams [1 row at waist height & 1 row lower down]. Dipswitches are used to set the number of beams being controlled. Beams, that are interrupted, are shown on the beam status leds on the controller. The relevant led/s will be turned on for each





beam that is interrupted
The booth controller can be set to run a uni-directional or bi-directional booth, by dipswitch selection

Other dipswitches set the booth to entry or exit operation, whether single mode is applied and operations relating to staff entry and last-exit.

For further details, please contact us by one of the methods given below.

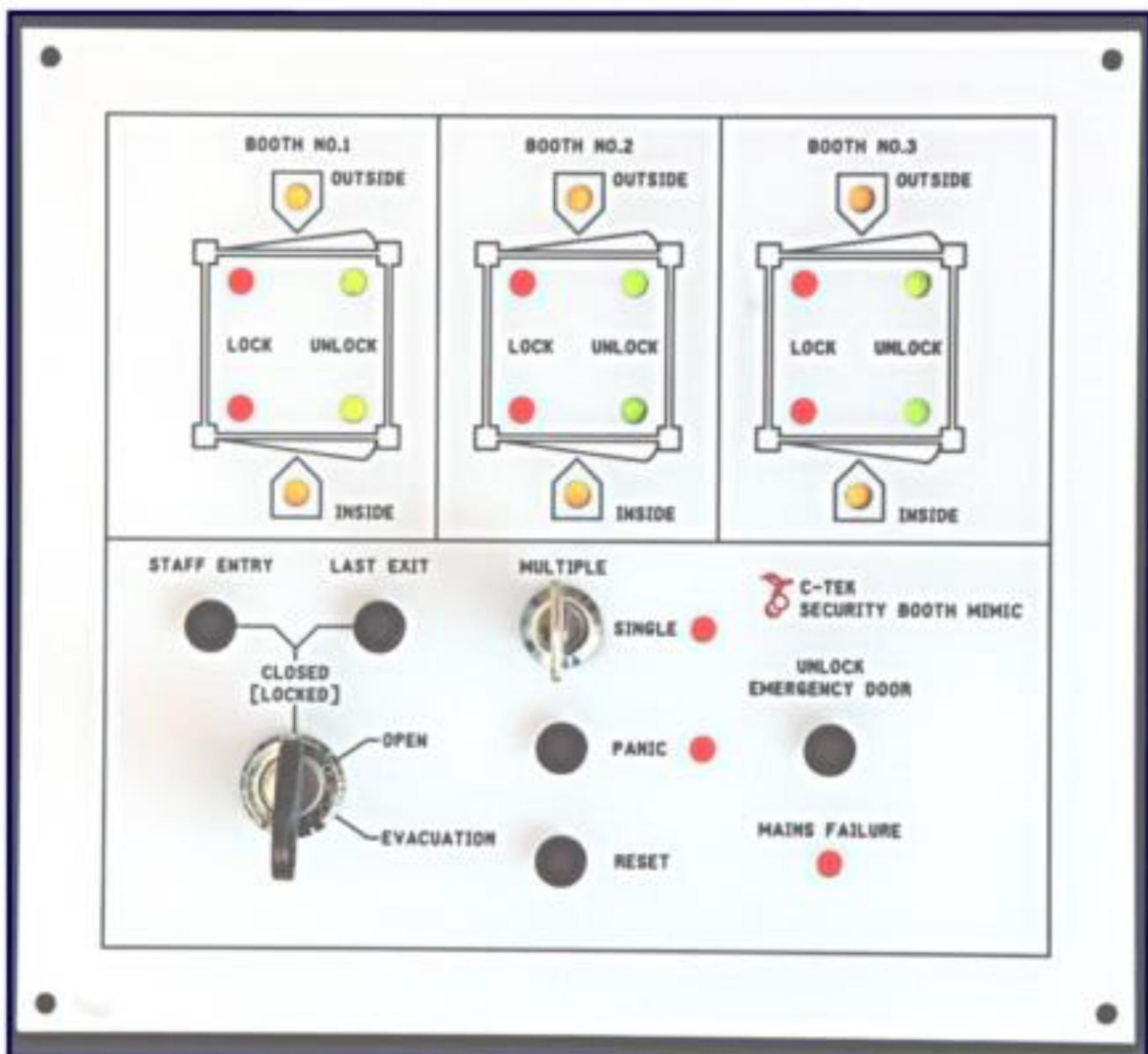


Figure aj CherryTech CBL07 mimic control panel to be installed in the security desk