

TITAN 3/4 HEIGHT INDUSTRIAL TURNSTILE



— QUALITY — GUARANTEE

- The TITAN Three Quarter Height is a medium security, aesthetic choice for your entrance
- Designed for high speed ultra quiet operation
- Exported worldwide

APPLICATIONS

- Suited for applications requiring high volume access and medium levels of security
- Used extensively in applications such as mines, factories, warehouses, universities and stadiums

DESIGNED FOR

- Interior and exterior installations
- Severe operating conditions

AVAILABLE CONFIGURATIONS

- 3 arm (120°) and 4 arm (90°) (4-arm is standard)
- Single and double

ROTATION LOCKING MECHANISM

- CE certified, fitted to all TITAN Three-Quarter Height turnstiles
- Ultra heavy-duty electromechanical rotation locking mechanism
- Bi-directional operation
- Designed by professional engineers
- Tried, tested and perfected over a period of over 20 years

RELIABLE

- Suspended rotor technology - eliminating stress on the base bearing
- Self-centering rotation system - rotor returns to starting position after every rotation
- Shock absorbing rubber coupling system
- Anti-Trap® safety system - no mid-rotation locking or trapping in the event of a power failure
- Programmable PLC logic with user diagnostic features
- Mechanical key override - clockwise and anti-clockwise directions (fail-secure)

DURABLE

- Zinc plated for corrosion resistance
- Ultra quiet, buffered solenoids and pawls
- Solenoids rated for 100% duty cycle
- Case hardened locking disk and pawls - eliminating any wear
- Factory settings need no further adjustment
- No routine maintenance whatsoever, ever

GUARANTEED

- 5 year mechanical guarantee
- 1 year electrical guarantee

PERPETUAL BASE BEARING

RELIABLE

- Combination of stainless steel and self-lubricating engineering plastics

DURABLE

- Designed for the harshest of conditions
- Corrosion resistant
- Unaffected by dust, dirt or moisture
- Self-lubricating

GUARANTEED

- Zero maintenance
- 5 year guarantee

TECHNICAL SPECIFICATIONS

POWER	220 Volt AC UK 110 Volt AC USA	
FREQUENCY	50Hz / 60Hz	
POWER CONSUMPTION	50W (single turnstile) 100W (double turnstile)	
SOLENOID VOLTAGE	24 Volt DC (12 Volt DC on request)	
LOGIC VOLTAGE	24 Volt DC	
DIMENSIONS	Single turnstile:	52.56" wide x 55.12" long x 61.81" high (1335 x 1400 x 1570mm)
	Double turnstile:	76.77" wide x 55.12" long x 61.81" high (1950 x 1400 x 1570mm)
ROTOR DIAMETER	47in 1200mm	
ROTOR ARM CONFIGURATION	3 arm (120°)	4 arm (90°)
ROTOR ARMS	1.97in 50mm diameter tube arms	
WEIGHT	Single turnstile (4 arm)	320lbs 145kg
	Double turnstile (4 arm)	507lbs 230kg
DESIGN	Modular bolt-together design for ease of transport and installation. Components can pass through a standard door. Can be packed in broken-down form either onto a pallet or into a crate for transport	
SYSTEMS INTEGRATION	<ul style="list-style-type: none"> • Integrates with all access control and time & attendance systems • Unlocking for entry / exit rotation controlled through normally open dry contact • Transaction / rotation complete output • Integral wireways with draw wires in place - no exposed wires 	

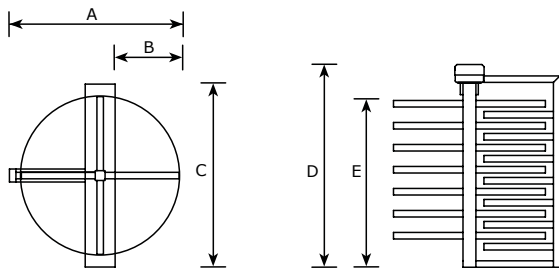
MANUFACTURING OPTIONS

ROTATION OPTIONS	<ul style="list-style-type: none"> • Electrically controlled bi-directional rotation (factory standard) • Mechanically controlled uni-directional rotation by means of key override • Free rotation
LOCKING OPTIONS	<ul style="list-style-type: none"> • Fail-secure auto-lock on power failure (factory standard) • Fail-safe auto-unlock on power failure (Geran standard) • Each direction of rotation configurable for either fail-secure or fail-safe operation
FIRE ALARM OPTIONS	Free rotation when triggered indefinitely (logic programmed for direction or rotation on request)
POWER OPTIONS	Battery backup with two 12 volt 7Ah batteries connected in series <ul style="list-style-type: none"> • Up to 1 000 transactions in fail-safe mode • Up to 60 minutes operation in fail-safe mode
ACCESSORY OPTIONS	<ul style="list-style-type: none"> • Turnstile screen (in matching finish) • Card / proximity reader mounting bracket • Biometric / fingerprint reader mounting brackets • Single / double pushbutton in plastic housing • LED red cross and green arrow indicator light • Multiple coin acceptor for pay-per-entry systems • LCD transaction counter with reset key switch • Random search device
FINISH OPTIONS	<ul style="list-style-type: none"> • Mild steel with UV resistant polyester exterior powder coat finish (charcoal blue hammertone) ■ • Mild steel with hot dip galvanized finish ▲ • Mild steel hot dip galvanized with UV resistant polyester exterior powder coat finish (charcoal blue hammertone) ■▲ • 304 grade brushed stainless steel • 316 grade brushed stainless steel ▲ <p>▲ suitable for corrosive environments (details available on request) ■ other colors available on request</p>

DIMENSIONS

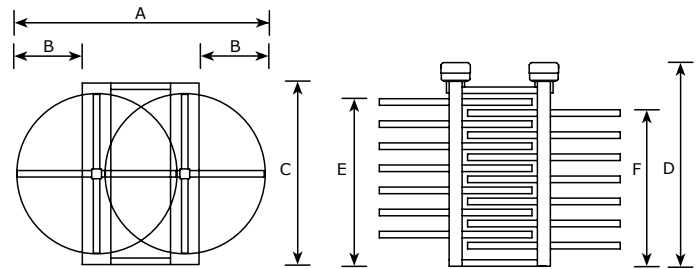
3/4 HEIGHT SINGLE TURNSTILE

A	Turnstile width	52.56in 1335mm
B	Walkthrough width	20.67in 525mm
C	Turnstile length	55.12in 1400mm
D	Overall height	61.81in 1570mm
E	Arm height (1)	50.79in 1290mm
F	Arm height (2)	N/A



3/4 HEIGHT DOUBLE TURNSTILE

A	Turnstile width	76.77in 1950mm
B	Walkthrough width	20.67in 525mm
C	Turnstile length	55.12in 1400mm
D	Overall height	61.81in 1570mm
E	Arm height (1)	50.79in 1290mm
F	Arm height (2)	47.44in 1205mm



Note: The turnstile screen shown below is an optional extra. Due to our policy of continuous improvement, products are subject to change without notice. Custom designs available on request

FEATURES



- 1 Rotalok® rotation locking mechanism and electronic control panel - incorporates:
 - Anti-Trap® safety system
 - Suspended Rotor technology
- 2 Lockable top cover
- 3 Mechanical key override
- 4 Shock absorbing rubber coupling
- 5 50mm diameter tube arms spaced 120mm apart
- 6 Access control reader mounting position
- 7 Rotarun® perpetual base bearing
- 8 Wiring bottom entry point
- 9 Optional turnstile screen