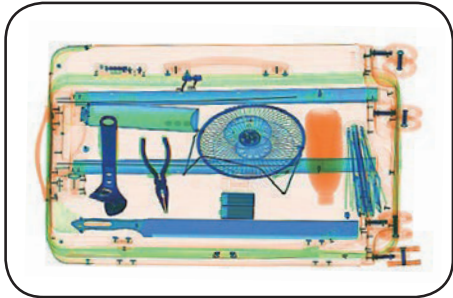


Dual Energy X-ray Inspection System

ZKX100100



Highlights

- Adjustable belt speed
- Large baggage and parcel screening
- Folding design for easy loading

Standard

- Fingerprint console board
- Dual monitor operation desk
- Bi-directional scanning

Optional

- Intelligent Analysis Function
- Passenger-package Linkage
- Anti Rat Device
- Energy Saving Function

The ZKX100100 X-ray Inspection System enhances an operator's ability to accurately identify potential threats while efficiently screening items up to 100 × 100 cm in size.

Equipped with a high-quality dual-energy X-ray generator and advanced image processing algorithms, the system produces clear, high-resolution scan images that enable precise visual identification of suspicious objects.

The unit features a lowered conveyor height for improved ergonomics, allowing for easier and more efficient loading of luggage and parcels. In addition, an integrated biometric identification function enhances system security by ensuring authorized operator access and eliminating reliance on password-based login.

With its modern ergonomic design and intelligent imaging capabilities, the ZKX100100 supports fast, accurate threat detection in high-demand security environments.

Specifications

Tunnel Size(W*H)	39*39 in / 100*100 cm / 1000*1000 mm
Speed	0.2-0.4m/s (adjustable)
Height of Transmission Belt	15.2 in / 385 mm
Maximum Load	200 kg (Adequate distribution)
Wire Resolution	38 AWG
Space Definition	Horizontal Φ 1.0mm \ Vertical Φ 2.0mm
Penetrate Definition	32 AWG
Penetration	30 mm steel board
Monitor	21.5 inch LED * 2
System Function	High density alert, Explosive/ Drug auxiliary detect, TIP, Luggage counter, date/time display, User management, Training.
Film Safety	ASA/ISO1600 standard of film safety

X-ray System

Tube Voltage	80-160kV (adjustable)
Tube Current	0.3-1.0 mA(adjustable)
Cooling	Seal oil cooling / 100%
Radiation Leak Dosage	0.2 μ Gy/h (5cm from the surface)

Installation Specification

Dimension(L*W*H)	133.23*55.39*73.46 in / 3384*1407*1866(mm)
Dimension with packing(L*W*H)	102.36 \times 59.84 \times 79.53 in / 2600*1520*2020(mm)
Console Desk Dimension(L*W*H)	51.97 \times 35.43 \times 12.60 in / 1320*900*320(mm)
Weight with Packaging	Tunnel: 2535lbs /1150kg Console: 298 lbs /135kg
Power Consumption	1 kVA
Noise	55.8 dB(A)

Dimension

